

Members Only Auction

4:30 p.m.
Thursday, July 12
Red Wing National
Guard Armory

*Auction highlights pictured
below & continued inside!*

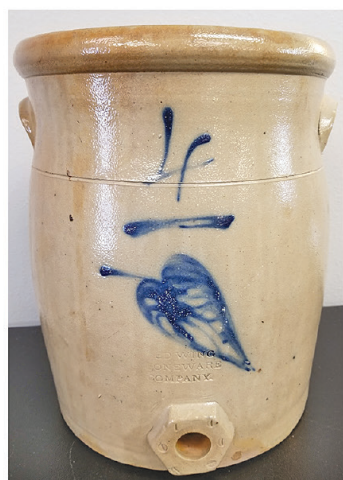
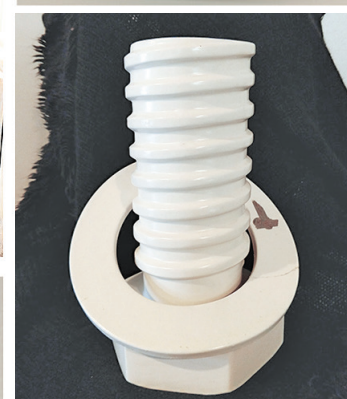


Pottery & Antique Show & Sale

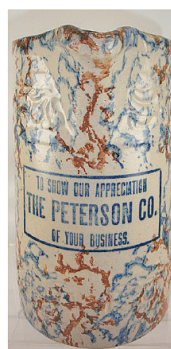
Saturday, July 14
Free to the public
(10:30 am to 1:30 pm)
Red Wing National
Guard Armory

CONVENTION 2018

• Minnesota State College Southeast • July 12-14, 2018 • Red Wing, MN •



Join Today!
ERWCS.org
651-388-4004



SPONSORED BY



larry's jugs
ANTIQUES



Greetings from the President

Welcome to the 42nd Convention of the Red Wing Collectors Society! The 42nd RWCS Convention finds us back at the Minnesota State College Southeast due to an overwhelming positive survey response by our members. Most appreciated the shorter walking distances and the seating accommodations there.

Over the years, the energy of this gathering of collectors has become larger than the Convention itself. While the Convention officially starts on Thursday, many collectors come 'home' for the entire week. There are two stoneware auctions early in the week as well as 'Wine-ing for Red Wing' – the premier fundraising event for your Pottery Museum of Red Wing. 'Wine-ing' will once again be held on Wednesday evening and it's an event you won't want to miss. Tickets are available in the Museum gift shop for early purchase or can be purchased during the event.

At the Thursday morning Welcome session, Leanne Knott, GIS specialist of Goodhue County, is speaking on mapping the pottery district with GIS (Geographic Information System) and storytelling software. Also, the 42nd Convention RWCS Commemorative will be unveiled. I'd like to thank the Goodhue County Historical Society and Red Wing ArtReach for supporting our Youth Programs again this year.

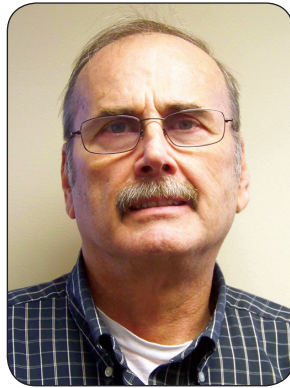
Thursday afternoon, the RWCS Auction will be held at the Armory on the south side of Red Wing. We have contracted with a company to bring in portable air conditioning if the forecast calls for high temperatures. Again, this year, we will have free shuttle bus service running from/to the Armory and the Correctional Facility which has volunteered 200 parking spaces for both the auction and the Saturday Show & Sale. The Correctional Facility is south of the Armory, so please watch for signs.

On Friday, we will enjoy an education day that is second to none, a fantastic display area, and get up to speed at the RWCS Business Meeting, and then move to the college commons area for the Friday social till 6:30.

Saturday morning at the Armory, the Show & Sale welcomes members at 9 a.m. and free public admission at 10:30. Again, the shuttle bus will be running. We are expecting a good crowd searching for new treasures. Our Convention culminates Saturday evening with a wonderful banquet at the Mt. Frontenac Golf Club.

Whether you come to Convention to hunt for that special piece, renew friendships, tour your museum, visit favorite antique stores and restaurants, enjoy the beautiful City of Red Wing, or all of the above, we hope that this Convention is everything you hoped for! Safe travels home!

Paul Wichert
President, Red Wing Collectors Society



Paul Wichert
President

Welcome from the Executive Director

Greetings Red Wing Collectors! Members, Convention time is here, and I know you are excited to see old friends, make new ones, and see the 2018 commemorative. Don't forget to download the convention app to your mobile device for convention week. Thank you to RWCS member Craig Orcutt for working with Mike Stenstrom and I to expand the app's information for the 2018 Convention.

New this year, we mailed the Convention Program in advance of the Convention. We hope every member enjoys receiving it. Plenty of additional copies will be available onsite at the Convention and online on the RWCS website. If you have not registered yet, onsite registration opens Thursday, July 12, at the Minnesota State College Southeast.

Inside this issue, there are several important items for members to review prior to the Convention; the Scavenger Hunt, bylaw changes to be voted on at the annual meeting, and Convention Auction preview! All this and much more is available to you right at your fingertips to get ready for the convention, events to take part in as you arrive in Red Wing, and many ways to add to your collection.

Your convention is made possible by hundreds of volunteers and their countless hours of time and effort. When you have a moment, please take time to thank the volunteers. If you would like to volunteer, stop at the registration desk at the convention.

Finally, I would like to thank the generous support of so many businesses and organizations in Red Wing. Without the annual local support and welcoming message each year, the convention would not be the membership experience of the year.

Thank you to every member for taking part in the many convention events and activities. I look forward to seeing everyone.

Have a great Convention!

Stacy L. Wegner
Executive Director



Stacy Wegner
Executive Director

Welcome from the History Center

The Goodhue County History Center is located at 1166 Oak St., Red Wing.

Welcome back collectors! It is convention time once again! This is such a fun time of year for us at the Goodhue County History Center. We have gotten to know many of you over the years and look forward to seeing your faces at educational seminars, Show & Sale, and other convention festivities.

This year our Education and Outreach Coordinator, Lindsey Rindo, will be actively involved in RWCS Kids View 2018, with a presentation on clay sources and clay pit life in Goodhue County as well as assisting with the rest of the day's activities.

Carve out some time to visit the History Center to see our new exhibit that opened May 5th on the Red Wing Sister Cities, "Objects of Friendship from Quzhou, China, & Ikata, Japan". It features many cultural items that have been gifted to the City of Red Wing over the years. We are also showing an exhibit highlighting Stanton and Minneola townships in Goodhue County, plus all of our regular exhibits will be on display.

Enjoy Red Wing and all that it has to offer this year at Convention!

Dennis Schultz
Board Chair
Goodhue County Historical Society



BECOME A MEMBER OF THE RWCS

New Members welcome to join during Convention. Come to the College.

Apply Online Today To Get 2018 Commemorative

A Primary \$35 annual membership is afforded all the rights and privileges of the organization. An Associate \$15 annual membership is afforded all the rights and privileges of the organization except for the receipt of the newsletter. There **must be at least one Primary membership per household address** in order to have other members at that address having Associate member status. Each membership is afforded the right to purchase one Convention commemorative.

Call 651-388-4004 | Online: www.ERWSC.org | E-mail: director@redwingcollectors.org

Welcome to **Red Wing!**

Welcome to the Red Wing Collectors Society Convention - and welcome to Red Wing!

Here we offer you:

- A beautiful, historic downtown with vibrant businesses in restored buildings;
- Thriving retail districts with businesses that offer everything you need – and stuff you really want;
- An unequaled arts and culture community ~ Red Wing Arts' and The Anderson Center's galleries of engaging art work, The Sheldon Theater's world class performing arts, and The Goodhue County History Center (history happens here).
- The Mississippi River Valley with outstanding access to the river, stream, and trail activities: boating, fishing, biking, and eagle watching.
- Magnificent bluffs awaiting discovery. Hike to the top of Barn Bluff or drive to the summit of Memorial Bluff to enjoy the view of the Hiawatha Valley and the City.
- Two uniquely picturesque golf courses that await to challenge you.

Thank you for visiting Red Wing. I look forward to seeing you!

Sean M. Dowse
Mayor



Sean Dowse
Red Wing Mayor

Greetings from the **RWCS Foundation**

On behalf of the RWCS Foundation Board of Directors, Welcome To Red Wing!

I would like to invite you along with your family and friends to visit the POTTERY MUSEUM OF RED WING. Stroll through the Red Wing Clay Industries' Time Line of Incredible Artifacts of Stoneware, Art Pottery, and Dinnerware along with various Red Wing Memorabilia. Each year we make sure to change or add new collections, and this year is no exception. Our new display honors the Union Stoneware Company.

On Wednesday, July 11th, please join the RWCS Foundation Board of Directors from 6-9pm for our annual fundraiser; "Wine-ing for Red Wing." Advance tickets may be purchased at the Pottery Museum Gift Store. This year we again have fantastic fundraiser auction items. We would love to see you there!

Pottery Museum hours are Tues.-Sat. 9-5pm, Sun. 11-4pm. Follow us on Facebook and enjoy your visit to Red Wing and the Pottery Museum of Red Wing.

Sincerely,

Dave Hallstrom
President
RWCS Foundation



Dave Hallstrom
Red Wing Collectors
Society Foundation /
Pottery Museum
of Red Wing

— **TABLE OF** —
CONTENTS

'Story Map' Depicts Local History of Pottery Industry	4
May 5 Seck Stoneware Auction Tops \$150,000 in Total Sales	5
Convention Week Events in Red Wing	5
Convention Buttons Honor Tradition	6
2018 Convention Schedule.....	7
Thank You Volunteers	8
RWCS Convention Auction Preview.....	9
Education	10-12
RWCS Bylaws Change up for Vote at Annual Business Meeting	13
Show and Sale.....	14
Commemorative.....	15
Chapter & Organization Information	16
Thank You Sponsors	17
Scavenger Hunt	18
Classifieds	19

CONVENTION

MEET UP

FRIDAY COLLEGE COMMONS

5:00PM - 6:30PM

ALL ATTENDEES WELCOME!

Join your fellow collectors following the Business Meeting in the College Commons.

On the success of the Member Meet up and MidWinter, the RWCS is bringing this to Convention Friday Night. From Trivia brought to you by RWCS Historian Nancy Lambert to the new Convention Scavenger Hunt (see page 18), food and beverage, door prizes and more. The Friday night social will be held immediately following the annual business meeting at the College Commons until 6:30pm.

Thank you to our event sponsors Sturdiwheat and Hallstrom's Florist & Greenhouses. Sturdiwheat is a manufacturer of small batch pancakes, breads, desserts, cereals and much more! Visit sturdiwheat.com to learn more about their products. Hallstrom's Florist & Greenhouses offers the finest floral arrangements and gifts. Visit hallstromsfloristandgreehouses.com to learn more about them!

Come spend some social time with your fellow collector friends or make new ones!



'Story Map' Depicts Local History of Pottery Industry

By Ruth Nerhaugen
Contributor

A "Story Map" detailing the history of the pottery industry in Goodhue County will be the topic of Leanne Knott's keynote address at the Red Wing Collectors Society Convention.

Knott, a GIS Systems Specialist with Goodhue County, will present her illustrated talk at 10 a.m. Thursday, July 12, in room 314 at Minnesota State College Southeast.

Knott created the Story Map by bringing together maps, images, video and narrative to create a visual history of the industry in this area.

Story Mapping is a relatively new web application. Knott saw her first example at a regional meeting. Then about a year ago, she had a chance to explore the concept further at a user conference for Esri, an international supplier of geographic information system (GIS) software.

Knott attended a session on creating Story Maps for nonprofits, which got her thinking about how to use GIS beyond daily applications such as land records, aerial photographs and paper maps.

"I wanted to try my hand at this," she said. Knott, who previously worked as a GIS Specialist for the City of Red Wing Planning Department, had created a power point that mapped the local pottery industry.

From that, she said, "I had lots of images and maps" to start the process. By fall Knott – who is also a published novelist – had

completed a rough draft of a narrative to accompany them.

Knott turned to Stacy Wegner of the Red Wing Collectors Society, who connected her with Robin Wipperling of the Pottery Museum of Red Wing; Gary Tefft, a pottery expert and historian; and Afton Esson, archives and library manager at the Goodhue County Historical Society. Esson helped her find high-quality photographs to complete the visual story.

That original Story Map, which will be the focus of Knott's keynote speech, can be seen on the Goodhue County Web page (click on Maps then find "Historic Pottery Industry Story Map" in the Maps Gallery).

"The story of pottery is really the story of Red Wing," Knott said. It involves the raw materials, the people who settled here, the development of an industry, family relationships, and the pride workers felt in creating signature "Red Wing" products.

"It's the story of the relationship between people and place – which is the essence of geography," she said.

The pottery Story Map has about 50 frames, which are similar to pages. Photos illustrate how the industry evolved over time, and the accompanying narrative draws from books including the essential "Clay Giants."

As for the third key element, Knott said, "Mapping gives context to the story."

Story Maps also can include embedded videos and Web apps, she noted. "One of the frames has a link to an 1874 map" of the county. Viewers can zoom in and see the de-

tail. They can also link to a YouTube video of dump digging.

For her presentation at the convention, Knott plans to talk briefly about GIS and her interest in developing the Story Map. She will show some of the frames, and expand on the history behind them. She ex-

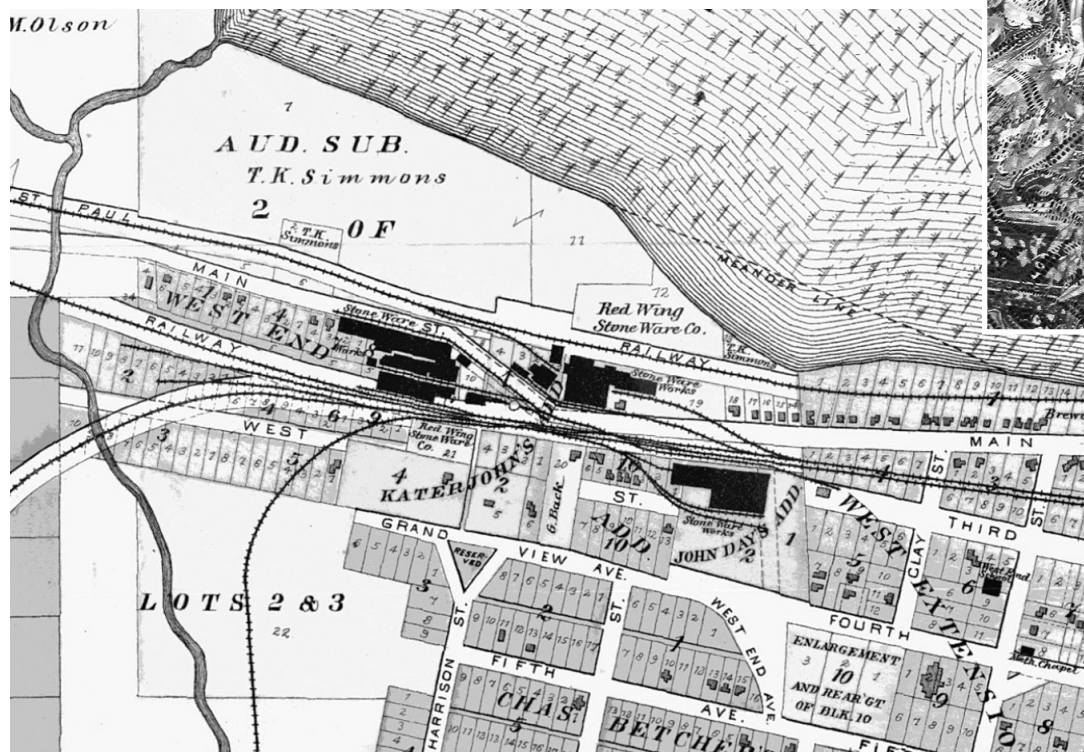
pects there'll be plenty of questions.

Knott sees the pottery Story Map as a launching pad for future efforts. "If I had my druthers, this is all I'd do," she admitted.

Her next focus will be Red Wing neighborhoods, beginning with historic downtown.



Leanne Knott's Story Map of the Historic Pottery Industry includes everything from early manufacturers and workers to street maps, neighborhoods, clay mines and transportation. – Ruth Nerhaugen photo



KEYNOTE DETAILS

Who: GIS Systems Specialist Leanne Knott

What: Pottery 'Story Map'

When: 10 a.m. July 12

Where: Room 314, Minnesota State College Southeast

The RWCS plans to record the session and have it available in the Lending Library later this year.

Each of the 50-plus frames in the Story Map includes narrative and images, often Sanborn Fire Insurance Maps dating as far back as 1884.

May 5 Seeck Stoneware Auction Tops \$150,000 in Total Sales

By Rick Natynski
RWCS Newsletter Editor

The collection of Jim Lefebvre and a number of items consigned by other collectors crossed the block at the Seeck Auction at the community center in Rock Falls, IA, on May 5. When the dust cleared, more than \$150,000 was spent on nearly 350 lots of stoneware – most of which were made by Red Wing.

As always, auctioneers and longtime RWCS members Jim & Jan Seeck and their staff ran an efficient and entertaining sale in front of a standing room only crowd. Live internet bidding was offered and there wasn't a buyer's premium – two factors that surely contributed to strong prices.

I was in attendance for the sale, so here are a few of my observations from the auction:

- As expected, rare, quality items brought good money. The star of the sale was a 5 gallon wing-decorated zinc glazed preserve jar, which spent some time on display in the Pottery Museum of Red Wing; it hammered down for \$5,750.



- There weren't many bargains to be

had. While a few common items may have slipped under the radar, prices were strong overall. Most pieces reached or surpassed what many attendees viewed as 'retail' prices. So if you were a dealer looking to buy pieces for resale, you probably didn't leave with a packed vehicle.

- A number of pieces seemed to sell for a lot more than their general perceived value. While it's common for this to happen at auctions, some of the prices were quite high for pieces that weren't unusually rare. This left some attendees scratching their heads and others wishing they had consigned pieces for the auction so they could cash-in. For example, a mint 15 gallon North Star salt glaze crock with upturned leaf sold for a shocking \$3,600 high bid, and a mint 3 gallon wing Ice Water cooler sold for \$2,600. Both of these were exceptional pieces, but I think most people will agree that they'd be surprised if either had been offered for sale in the Pottery Place parking lot for such lofty prices during Convention in Red Wing. But, maybe I'm wrong.

All-in-all I had a good time at the auction, even though I didn't take much home with me. It will definitely be interesting to see if these strong prices carry over to the summer Convention. Have we returned to a seller's market after many years, or was it just a case of auction fever at its finest? Either way, I consider it to be a good sign for collecting in general. Here are some other highlights



The combination of the rare and attractive "M. Wolff & Sons, Chicago" advertising and the blue bands drove this nice storage jar to \$2,100.



When it comes to salt glaze, sometimes the quality of the decoration supersedes condition. Both of these double-leaf 15 gallon salt glaze crocks carried long hairlines; the one on the left sold for \$500, while the one with the large leaves on the right sold for \$2,000.



Despite a faint hairline in front, this 40 gallon Elephant Ear crock with hand-drawn "40" sold for an impressive \$4,400 high bid.



This 12 gallon crock might be a one-of-a-kind piece with the two sets Elephant Ear leaves stamped vertically. Although it had some damage in the bottom, it sold for \$1,700.



4 gallon birch leaf beehive jugs are hard to find as it is, but this one had the desirable "ski" oval and all the printing was in black ink, making it nearly impossible to find. As a result, it sold for \$1,650.

Convention Week Events in Red Wing

July 8 Sunday

8am - Noon Annual First Lutheran Church Waffle Breakfast, All You Can Eat!

July 10 Tuesday

7:30 pm Red Wing's Amateur baseball team the Aces vs. Dodge County D-Backs at the Red Wing Athletic Field.

July 11 Wednesday

6:00 pm - 9:00 pm Wine-ing for Red Wing at the Pottery Museum of Red Wing
7:00 pm Concert in the Park in Central Park presented by the Red Wing Arts Association special performance by The Dollys.

2:00 pm - 7:00 pm Bluffs & Brews: Canoe the Cannon River - Sponsored by the Goodhue County Historical Society. This ticketed event will be a canoe trip on the Cannon River and a social hour will follow at Liberty's in Red Wing.

July 13 Friday

5:00 pm - 6:30 pm Member Meet Up at the Convention



RWCS NIGHT AT THE ACES!

7:30 pm Red Wing Aces vs. Burnsville Bulldogs is a United Way Stuff-the-Bus event and the 25th Anniversary Team Night at the Red Wing Athletic Field.
The Prairie Island Indian Community Pow Wow begins and runs through July 15.

July 14 Saturday

5:30 pm Convention Banquet at Mount Frontenac Golf Course.

2:00 pm - 7:00 pm Bluffs & Brews: Canoe the Cannon River - Sponsored by the Goodhue County Historical Society. This ticketed event will be a canoe trip on the Cannon River and a social hour will follow at Liberty's in Red Wing.

July 15 Sunday

3:30 pm - 5:30 pm History Cruise: The Sea Wing Disaster - Sponsored by the Goodhue County Historical Society aboard the Pearl of the Lake. This ticketed event travels the waters of Lake Pepin and the Mississippi River while learning local history about the historic Sea Wing disaster.

Convention Buttons Honor Tradition

By Gary Tefft and Stacy Wegner

Until the middle of the 20th Century, it was the custom of members of fraternal, religious and trade union groups to proudly wear elaborate “badges” displaying the name and logo of their organization when attending meetings, conventions or while participating in parades. These badges typically consisted of colorful silk ribbons hanging from a gilded bar or headpiece which often was emblazoned with symbols representing faith or fellowship and included a clasp pin for attachment to the lapel of the wearer’s coat. They were also frequently accessorized by a shorter “drape” ribbon hung over the main ribbon and suspending a medalion displaying a small photo, additional logo or symbology. The Stoneware Potters Union Local No.8302 at Red Wing was no exception. Surviving examples are rare and prized by descendants of their original owners.

The RWCS Convention buttons have been created for each of the group’s annual gatherings since the first. In the beginning the buttons were created, made, and sold by individual members. In 1991, the RWCS Board designated the button as a fundraiser for the Chapters.

Over 42 years the typical button has been the tradition, but there have been some unique changes in recent years.

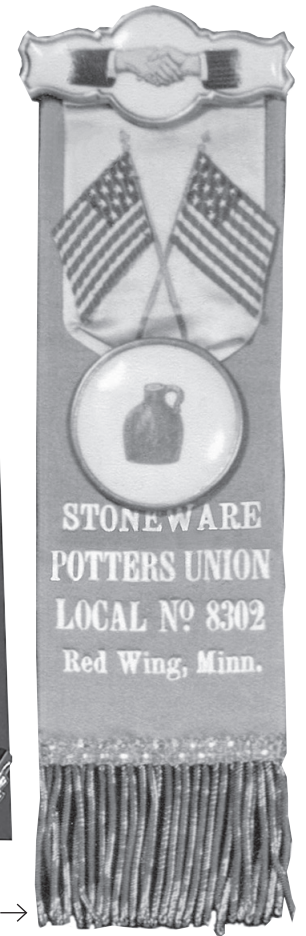
- **1999** first stoneware button created by the Golden State Chapter
- **2000** featured an arrow to designate a specific collecting interest, by the Cannon Valley Red Wing Collector Club
- **2003** the first rectangle button by the Cannon Valley Red Wing Collector Club
- **2010** was a salt glazed button with several varieties made by the Trails West Chapter
- **2011** second rectangle button by Iowa Chapter
- **2012** plastic wing shaped button by the Gopher Chapter
- **2014** a stoneware jug shaped button by the Badger Chapter
- **2015** a wooden button done by the Lewis and Clark Chapter
- **2016** a leather S. B. Foot Tannery button made in Red Wing by the Badger Chapter
- **2018** pottery wing shaped button by the Trails West Chapter

With the recent Chapter creativity in the button design, the RWCS is excited to see what the Badger Chapter will unveil as the 2018 RWCS Convention Button. They will be available for purchase each day at the convention in the commons area of the Minnesota State College Southeast, near the registration tables, or Saturday at the Show & Sale at the National Guard Armory. Be sure to pick up yours while the supply lasts!



Button collection various years.

An original Stoneware Potters Union badge. →



001728665r1

SALVATION ARMY STORES
WHERE SHOPPING IS THE KEY TO A BETTER LIFE FOR THOSE IN NEED!

10% OFF

Use this coupon at the Red Wing store only. Good for purchases of clothing, reconditioned beds, shoes, accessories, bedding, linens, rugs, household items, collectibles, small kitchen appliances, electronics, furniture, books, vinyl albums, cassettes & VHS.

STORE & DONATION CENTER
ROCHESTER.SA.ORG

501 Plum St., Red Wing • 651-388-9270
Donations taken at side door 9-5 M-S
Store hours: Mon-Fri 9-6 • Sat 9-5

001733740r1

GREAT CHICKEN

- BURGERS & FRIES
- SANDWICHES
- WRAPS
- SALAD BAR
- FISH TACOS
- CONES
- SHAKES • MALTS

BREAKFAST SPECIAL
2 eggs, 2 bacon strips and 2 pancakes

Breakfast Burritos
Omelets
French Toast
Biscuits and Gravy
Pancakes
Much more!

A Proud Sponsor of the Potter's Convention

Randys

Hwy. 61, Downtown Red Wing • 7AM-9PM Mon.-Sun.
See full menu online at randysinredwing.com

TIME		LOCATION
Monday, July 9 @ 8:00 am	Foundation Board Meeting	Pottery Museum of Red Wing
Tuesday, July 10 @ 6:00 pm	RWCS Board of Directors Meeting	Pottery Museum of Red Wing
Wednesday, July 11		
10:00 am	Kids View Set Up	500 Classroom
11:00 – 3:00	Pre-registered attendees badge pick up	Pottery Museum of Red Wing
	Auction Catalog For Sale	240 Harrison St
12:00 – 3:00	RWCS Auction Check-In, Catalogs for Sale	National Guard Armory
		885 E 7th St, Red Wing, MN
12:00 – 3:00	Display: set up by appointment	College 308 Pioneer Rd
		416, 417, 418
		Pottery Museum of Red Wing
6:00pm – 9:00pm RWCS Foundation “WINE-ing for Red Wing”		
Thursday, July 12 MINNESOTA STATE COLLEGE EVENTS		
8:00 – 2:00	Convention Registration	College Lobby
	RWCS Apparel Order Pick Up & Sales	
	Auction Catalogs For Sale & Bid Card Distribution	
8:00 – 2:00	Concessions Open Breakfast, Lunch, Beverages and Snacks	Student Commons
	Red Wing High School Volleyball Team	
8:00 – 2:00	Education Tables	Student Commons
8:00 – 10:00	Chapter Presidents Meeting	101 College
8:00 – 10:00	Commemorative Distribution & Silent Auctions Open (silent auctions close 10:30 am Saturday)	406/407
7:30 – 9:30	Set up the Display and Rare Items	416, 417,418
8:00 – 2:00	Chapter Challenge Pieces (bidding closes at 3pm Friday)	Student Commons
9:00 - 10:00	Orientation for Convention First Timers	314 College
9:30 – 12:30	Young Collector Field Trip (page 12)	Student Commons
	Participants meet & travel to Red Wing ArtReach	
10:00 – 2:30	Displays open for viewing, voting closes at 3pm Friday	416, 417,418
10:30 – 12:00	Welcome Session & Keynote (see page 4)	314 College
	Historic Pottery Industry of Red Wing & Goodhue	
	County Story Map— Leanne Knot, GIS Specialist Goodhue County	
11:00 – 1:00	Lunch Open provided by Red Wing High School Volleyball Team	Student Commons
1:00 – 2:00	Chapter Meetings	101, 123, 121, 211, 215, 314
	<i>Badger Chapter 215, Gopher Chapter 123, Iowa Chapter 121, Lewis & Clark 108,</i>	
	<i>Siouxland Chapter 126, Trails West Chapter 101, Wisconsin Chapter 314,</i>	
	<i>Southwest Redwings Chapter 202</i>	
1:00 – 2:00	Commemorative Distribution	406/407
	(silent auctions close 10:30 am Saturday)	
AUCTION	RED WING NATIONAL GUARD ARMORY (Preview page 9)	
8:00 – 11:00	Auction Check-In	National Guard Armory
	MUST PICK UP BADGE AT COLLEGE!	885 E 7th St, Red Wing, MN
8:00 – 11:00	Distribution of Bid Numbers. Also available at College	Armory
3:00 – ?	Auction Catalog for Sale	Catalogs available at College
3:00 pm – 8:00 pm	Shuttle Service	MN Correctional Facility
3:00 – 5:30	Convention Registration – AT AUCTION ONLY	Armory
2:00 – 4:15	Auction Preview	Armory
4:00 – 8:00	Auction Concessions – Goodhue County Historical Society	Armory
4:30 – ????	Official RWCS Auction Special Commemorative Drawing!	Armory

*Tickets for banquet still available!

*Current as of 4 June 2018. All Convention Event Times Are Subject to Change.
See Convention Program and onsite signage for final schedule.*

RWCS GEAR






PRE ORDER BY JUNE 18
LIMITED ITEMS ONSITE

Pigment dye
Resistant grass
Runs a broiler in
back. Colors may
vary slightly from
what is shown.

THURSDAY & FRIDAY

COLLEGE LOBBY



RWCS Night at the Aces

Free!

All Collectors are invited!

Come watch the Aces

Friday, July 13 - 7:30pm

Red Wing Athletic Field

1322 12th St., Red Wing, MN



Thank You so much!

The RWCS Board of Directors, Convention Chairs, and I wish to thank all the members that volunteer for the RWCS year-round, both at MidWinter and Convention. The time commitment of hundreds of members before, during, and after RWCS events makes these membership events possible.

Each year more than 200 members take time out of their schedule at MidWinter and the Convention. In addition, many members volunteer time in the office throughout the year too.

Stacy Wegner
Executive Director, RWCS

Thank You to all the members who help out areas such as:

- Registration Onsite
- Pre-Registration Pickup
- Data Entry
- Apparel Sales
- Commemorative
 - Distribution
 - Silent auctions
 - Sales
- Auction
 - Set up/tear down
 - Grading
 - Check-in
 - Clerking
- Show & Sale
 - Set up/Clean up
 - Door Security
- Fundraising silent auctions
- Speakers
- Shared Interest Group leaders
- Social events
- Display
 - Set up/tear down
 - Putting on a display
- Kids View
- Young Collectors
- Newsletter Articles
- Social Media
- Website management
- Ask the Expert questions
- Members promotion
- Convention preparations
- Convention Button
- Chapter Officers
- Managers
- Convention Chairs
- RWCS brochure committee
- Technology Support
- RWCS Apparel Design
- RWCS Office Mailings
- Distributing Event Posters in Local Community
- Transporting RWCS Supplies to events
- Hanging Convention and MidWinter signage
- RWCS Officer Election
- Bylaw Committees
- Membership Committee
- Facebook Admins
- Hosting Socials
- Distribution of handouts

Volunteering is a great way to meet new members, make new friendships, and have fun! Consider volunteering today. Contact the office 651-388-4004 director@redwingcollectors.org.

001733746r1



Whole Foods for a Healthy Lifestyle

- Organic • Bulk • Dry Goods
- Local Meats • Supplements
- Health & Beauty • Essential Oils

Fresh Organic Smoothies

\$1.00 OFF Offer Good July 12-14

Show your Attendee Badge for discount

OPEN MON.-SAT.

318 Bush Street, Red Wing, MN

651-388-0333

www.simpleabundanceredwing.com



Locally Owned for 18 Years



Minnesota's First County Historical Society

1166 Oak Street | Red Wing, MN | (651) 388-6024
www.GoodhueCountyHistory.org

LIBERTY'S RESTAURANT & LOUNGE

Proud
Supporter
of the
Red Wing
Collectors
Society.



Decor of Red Wing Yesteryear

Welcome Collectors!

Open Daily 8 a.m.

**Serving Breakfast,
Lunch & Dinner
Since 1975**

Featuring Sandwiches, Pizza,
Steaks, Seafood, Mexican,
Italian and American Cuisine.

Online Menu
libertysrestaurant.com

Full Menu Delivery

651-388-8877

303 W. Third Street
Downtown Red Wing

2017 RWCS Convention Attendance By State:

MN492	KY..... 4
WI 194	OK..... 4
IA..... 85	IN 4
IL..... 37	WA..... 4
SD 35	OH 4
CA..... 26	FL..... 3
ND 23	TN 3
MO 22	UT..... 3
NE..... 21	TX 2
KS..... 16	MS 2
AZ 15	AL 2
MI..... 9	MA..... 1
CO 6	SC 1
AR..... 5	

TOTAL: 1,023



RWCS Convention Auction Preview

From stoneware to dinnerware to art pottery, we have several exceptional pieces up for sale at this year's RWCS Convention Auction! Catalogs are for sale for \$5 at the Pottery Museum of Red Wing and Larry's Jugs.

RWCS Auction Manager Scott Hardman and I would like to thank everyone who submitted pieces to this year's auction. The pieces pictured on the cover and those pictured here will be up for grabs at the auction. So many photos were sent in that there was no way we could fit them all, so visit the members-only section of the RWCS website to see more. Remember, every piece in this auction has been submitted by either a member, a Chapter or the Museum, so by bidding on these items, you are directly showing your support for your fellow collectors and the RWCS as a whole!

Remember, the Convention Auction will be held in the **Red Wing National Guard Armory at 885 E 7th St. in Red Wing. Consignors can check-in their pieces from Noon to 3 p.m. on Wednesday, July 11, or 8 to 11 a.m. on Thursday, July 12.** The earlier you can be there to submit your pieces, the better. You need to be registered for Convention to drop off your items, so you'll need to pick up your Convention badge before you do this.

Badge pick up times:

- 11 a.m to 3 p.m. on Wednesday, July 11, at the Pottery Museum of Red Wing
- 8 a.m. to 2 p.m. on Thursday, July 12, at the Minnesota State College Southeast
- 3 to 5:30 p.m. on Thursday, July 12, at the Convention Auction

Auction viewing will run from 2 to 4:15 p.m. on Thursday, July 12, and the event itself will begin at 4:30 p.m. Parking at the Armory is limited, but we'll have a shuttle running from overflow parking at the Minnesota Correctional Facility at 1079 County 292 Blvd., which is just down the road past the neighboring Days Inn. As always, members must be registered for Convention in order to attend and bid. I can't wait to see you all there. Don't forget your wallet!

– Stacy Wegner, RWCS Executive Director



**GAIL PECK'S
STONEWARE
SALE**

**CONVENTION WEEK
IN RED WING**

**RED WING SUPER 8
MOTEL CONFERENCE ROOM
(POOL ENTRANCE)**

**WEDNESDAY, JULY 11
8 a.m. – 3 p.m.**

**THURSDAY, JULY 12
8 a.m. – 2 p.m.**

1161 4th St S
Cannon Falls, MN
507-263-0352

Located between the
Twin Cities and Rochester
off Hwy 52 on the
southeast end of Cannon
Falls. Next to John Deere.

**COUNTRY SIDE
Antique Mall**

Open Daily
Mon-Sat 9:30-5:30
Sun. 11-5:30

Extended hours are
9am-7pm for the
Pottery Convention
Thurs - Fri - Sat

We have a Large selection of Red Wing Pottery.

Stop in and check out our 12,000 sq feet of
antique shopping for all budgets

Like us on
Facebook

EDUCATION - Thursday & Friday, July 12 & 13

Keynote

Title: Historic Pottery Industry of Red Wing & Goodhue County Story Map
Presenter: Leanne Knott, GIS Systems Specialist, Goodhue County
Thursday: July 12 • 10:30 a.m.

Session Description:

Goodhue County GIS Systems Specialist Leanne Knott will share a visual history of the pottery industry in Red Wing and Goodhue County with maps, images, video, and narrative using an Esri Story Map web application. History topics include early pottery manufacturers, Sanborn Fire Insurance maps of the potteries, clay mining, Zumbrota-based manufacturing, transportation systems, workforce neighborhoods, pottery dump, and the enduring legacy of Red Wing pottery history today.

Speaker Biography:

Leanne Knott, GISP, has been working as a GIS Systems Specialist for Goodhue County, Minnesota since 2015. She previously worked as GIS Specialist for the City of Red Wing. She is a graduate of the University of Minnesota and completed her Master of Science in GIS at St. Mary's University. Leanne is also an award-winning novelist and has published three novels to date. See article page 4.

Educational Seminars Friday, July 13, 2018

Less Common Gypsy Trail (THIS IS A 3 PART SESSION)

Speakers: Larry Roschen & Terry Moe
 Part 1 Session 2: 11:00 a.m. to 11:50 a.m.
 Part 2 Session 3: 1:00 p.m. to 1:50 p.m.
 Part 3 Session 4: 2:00 p.m. to 2:50 p.m.

Session Description:

This seminar is designed to take 3 sessions. Gypsy Trail is the dinnerware line with the most items not shown in the popular sources. Since many of the items are not marked, it is difficult for collectors to identify them. Larry and Terry will show photos and discuss all of the less common items. This seminar is designed to precede a series of RWCS Newsletter articles.

Speaker Biography:

Terry Moe and his wife Marilyn have been collecting Red Wing pottery since they inherited a partial set of Gypsy Trail Plain and Reed in 1975 from Terry's Grandmother. They primarily collect dinnerware. Gypsy Trail, Wreath, Ivanhoe, Nassau, Ardennes, Hotel or Restaurant, and Normandy along with Merrileaf have been their main focus. Primary source materials allowing them to document dinnerware have become a major interest.

Larry Roschen and his wife Kathy have col-

lected all forms of Red Wing pottery since 1980. Red Wing pitchers, teapots, salt & pepper shakers are primary collecting interests along with building complete sets of several dinnerware patterns. Larry's interests eventually turned from growing the collection to learning more about the Red Wing dinnerware lines through research of vintage documents. Larry currently serves as the dinnerware advisor for the "Ask the Experts" section of the RWCS website. Larry and Terry have conducted numerous dinnerware seminars for RWCS Midwinter and Summer Conventions.

Fondoso Dinnerware

Speaker: Monica Keding
 Session 1: 10:00 a.m. to 10:50 a.m.
 Session 2: 11:00 a.m. to 11:50 a.m.

Session Description:

Come and talk about the fun of collecting Dinnerware. This session will give you something new to look for and I will highlight Fondoso dinnerware.

Speaker Biography:

Monica Keding has been a member of since 1990 and has been collecting Fondoso since 1988. She is also the webmaster of the Facebook page Red Wing Fondoso. Monica is still searching for a few pieces to complete her Fondoso collection and also collects stoneware pitchers, bowls as well as art pottery.

The Journey of Collecting Red Wing Part 2

Speakers: Larry Peterson, Gary Tyc
 Session 1: 10:00 a.m. to 10:50 a.m.

Session Description:

Larry Peterson has identified over ten stages of collecting Red Wing. He along with Gary Tyc will help to identify where you are right now and give you ideas for how to move purposely forward. They will share many new ways to enhance your collecting experience, and how to have more fun in your Red Wing adventure. Class participation will be encouraged.

Speaker Biography:

Larry Peterson, RWCS Charter Member and Hall of Fame member has been collecting Red Wing since 1970. Larry was asked to display some of his favorite pieces at the first convention. He has participated in every convention since. He has served as Education Chairperson, and President of the Cannon Valley Chapter. He has coauthored three books on Red Wing. Larry has always dreamed of creating a pottery museum. With Dave and Diane Hallstrom he started the Pottery Museum twenty years ago at Red Wing which became the new museum. He was project manager, overseeing the designing, coordinating the transfer to the current site, and moving the Schleich museum to the city of Red Wing. He works hard every year with other volunteers to have a new display and many new items for you to enjoy. He is owner of Larry's Jugs Antiques. His passion is to promote the history, the

collecting, and the investing in Red Wing stoneware and pottery by sharing, teaching, and having fun.

Gary Tyc has been collecting Red Wing stoneware and other antiques for over 30 years. He has served and is currently serving as a RWCS Foundation Board Member. He is a past president of the RWCS Rocky Mountain (Colorado) Chapter from 1994 through 1997. His primary collecting interests are salt glaze water coolers, beehive jugs, crocks, and certain merchant advertising pieces. Professionally he is the CFO of a mutual fund company with headquarters in New York City and Tucson, AZ. He has lived in Tucson, AZ for the past 17 years.

Thirty Different Stoneware Fruit Jar Closures

Speakers: Dennis Nygaard and Marv Juel
 Session 1: 10:00 a.m. to 10:50 a.m.
 Session 2: 11:00 a.m. to 11:50 a.m.

Session Description:

Marv Juel and Dennis Nygaard will present on 30 different fruit jar closures. Examples of all the discussed closures will be available so that members of the audience will be able to physically examine them.

Speaker Biographies:

Dennis Nygaard is a long time RWCS member inducted in to the RWCS Hall of Fame in 2011. He has been digging in the Red Wing dump since 1980. In addition to his passion for Red Wing and the Pottery dump, Dennis collects stoneware fruit jars from all United States potteries with a special interest in New Brighton, PA, pottery. Dennis has been a speaker at both MidWinter and Convention for a number of years. He is a member of the Gopher Chapter. Dennis lives in Hastings, MN, with his wife, Virginia.

Marv Juel was born and raised in Iowa. He is a 1950 graduate of Nashua High School. He attended and graduated from LaCrosse State College, LaCrosse, Wisconsin, University of Minnesota with a master's degree in mathematics in education. Marv made a career of teaching high school mathematics and did some coaching of boy's sports. He retired after the 1986-1987 school year.

50 Years of Pottery Dump Passion

Speakers: Steve & Phyllis Showers
 Session 1: 10:00 a.m. to 10:50 a.m.
 Session 2: 11:00 a.m. to 11:50 a.m.

Session Description:

Steve and Phyllis Showers are taking time this convention to reflect on 50 years of digging the stories of Red Wing. Come and hear their timeless story of curating the unique history of Red Wing stoneware and pottery via the production dumps in Red Wing.

Speaker Biography:

"Red Wing Archeologist" Steve Showers has been a Red Wing pottery dump digger for over 50 years and is a RWCS Hall of Fame Member. He has been a speaker at every

CONTINUED ON PAGE 11

Shared Interest Groups

Friday, July 13
9:00 a.m. – 10:00 a.m.

Description:

Come to the College early to meet up with others with your same collecting interest. Share your specific Red Wing collecting passion for Dinnerware, Stoneware, or Art Pottery and network with other collectors. Lots of time to swap stories, ask questions and get connected with other RWCS members with your area of interest. See page 11 for assigned rooms.

Orientation for First Timers

Room 314
Speaker: Catherine Beall
Thursday: July 12, 9:00 a.m. to 10:00 a.m.
Friday: July 13, 9:00 a.m. to 10:00 a.m.

Session Description:

Start your first Convention experience out right by attending an Orientation Seminar led by longtime RWCS member Catherine Beall. Catherine will discuss all of the activities that are lined up and offer tips on making the most of your Convention experience.

Speaker Biography:

Hello all, my name is Catherine Beall. I have been involved in the Red Wing Convention for over ten years now. I have been speaking at the Convention for eight years now. My interest in Red Wing is the history and preservation of that history. The Charles E. Murphy prints are my area of interest. Hope to see you all there.

EDUCATION DAY continued from page 10

Convention since he joined the RWCS. Steve and his wife, Phyllis, are active members of the Gopher Chapter and Iowa Chapter. Phyllis are avid gardeners, using their Red Wing sewer pipe as planters, and shards as ground cover and stepping stones. They live in Welch, Minnesota.

Making Sense of Red Wing Art Pottery Shape Numbers

Speaker: Ron Linde
Session 1: 10:00 a.m. to 10:50 a.m.
Session 2: 11:00 a.m. to 11:50 a.m.

Session Description:
Are you puzzled by the shape number on your art pottery or want to know more about dating the year that your Red Wing art ware was first produced? Ron Linde developed a schematic to explain how these shape numbers were developed and how you can date when your art ware was first in production. You are invited to bring a couple favorite pieces for dating and any questions that you might have related to art ware production.
Speaker Biography:
Ron Linde joined the RWCS in 1981. He has

researched Red Wing stoneware and art pottery and given over 30 presentations and museum tours. Ron was a charter board member of the Red Wing Collectors Society Foundation and served as president for six years. He was inducted into the RWCS Hall of Fame in 2003 and is a Life Member of the American Art Pottery Association.

Life (and Red Wing) at Mid-Century: More than just “modern”

Speaker: Sam Edge
Session 3: 1:00 p.m. to 1:50 p.m.
Session 4: 2:00 p.m. to 2:50 p.m.

Session Description:
Mid-Century Modern. Early American. Tiki. Brutalist. Hollywood Regency. Kitsch. Do you see these words and wonder what the heck they all mean? In this session, we will attempt to demystify the craze that currently surrounds Mid-Century design, placing the products made by the Red Wing Potteries into a wider design (and societal) context. We will discuss the many (sometimes

conflicting) styles that existed during the Mid-Century era and how they manifested themselves into a dazzling array of products. We will examine both current and vintage materials to aid in our understanding. Come ready to learn and to have some fun!
Speaker Biography:
Sam Edge was born and raised in Stewartville, Minnesota, a small town just outside of Rochester. A member of RWCS since 2005, Sam was born into a Red Wing (and antiques) loving family. When he is not busy working on his Master of Library and Information Studies degree, Sam can probably be found either working in the library system at Mayo Clinic or at one of six local thrift stores (no joke – his iPhone once thought he lived at Savers). Sam is an avid collector of Mid-Century items, including Red Wing and studio pottery.

Exploring Red Wing Bean Pots

Speaker: Kent Williamson
Session 3: 1:00 p.m. to 1:50 p.m.
Session 4: 2:00 p.m. to 2:50 p.m.

Session Description:
Everything you want to know about Bean Pots. Pre-1900, Dinnerware bean pots, Advertising bean pots and various bean pot sizes.
Speaker Biography:
Kent Williamson joined the RWCS in 1969, He has given seminars on cookie jars and bean pots. He started a special interest group in advertising bean pots in 2016. He is the president of the Southwest Chapter. He owns over 300 various Red Wing bean pots and loves to share that knowledge with others.

Pot Shops

Speaker: Gary Tefft
Session 3: 1:00 p.m. to 1:50 p.m.
Session 4: 2:00 p.m. to 2:50 p.m.

Session Description:
The sizes, locations, and layouts of the pot shops in Red Wing and the machinery, equipment and processes used through the years will be presented and explained. You

CONTINUED ON PAGE 13

Keynote & Educational Seminars July 12-13, 2018

Minnesota State College Southeast

KEYNOTE
Historic Pottery Industry of Red Wing & Goodhue County Story Map Presenter: Leanne Knott
Room 314
Thursday, July 12
10:30 a.m.
(See article p.4)

ORIENTATION FOR FIRST TIMERS
Catherine Beall
Room 314
Thursday & Friday
July 12 & 13
9:00 a.m.

SHARED INTEREST GROUPS
Friday, July 13
9:00-10:00 a.m.
See chart

	101	123	121	314	108	Off Site
9:00 to 9:50		Shared Interest – FRIDAY Stoneware	Shared Interest – FRIDAY Art Pottery	Thursday & Friday Orientation for First Timers Catherine Beall	Shared Interest – FRIDAY Art Pottery	Oakwood Cemetery End of East Ave. Red Wing, MN
EDUCATIONAL SEMINARS BELOW ON FRIDAY ONLY						
Session I 10:00 to 10:50	Fondoso Dinnerware Monica Keding	The Journey of Collecting Part 2 Larry Peterson Gary Tyc	Thirty Different Stoneware Fruit Jar Closures Marvin Juel Dennis Nygaard	50 Years of Pottery Dump Passion Steve & Phyllis Showers	Making Sense of Red Wing Art Pottery Shape Numbers Ron Linde	A Tour Through Oakwood Cemetery 10:00 to 11:50 Dustin Heckman
Session II 11:00 to 11:50	Fondoso Dinnerware Monica Keding	Less Common Gypsy Trail Part 1 of 3 Terry Moe Larry Roschen	Thirty Different Stoneware Fruit Jar Closures Marvin Juel Dennis Nygaard	50 Years of Pottery Dump Passion Steve & Phyllis Showers	Making Sense of Red Wing Art Pottery Shape Numbers Ron Linde	
Session III 1:00 to 1:50	Life (and Red Wing) at Mid-Century: More Than Just “Modern” Sam Edge	Less Common Gypsy Trail Part 2 of 3 Terry Moe Larry Roschen	Exploring Red Wing Bean Pots Kent Williamson		Pot Shops Gary Tefft	A Tour Through Oakwood Cemetery 10:00 to 11:50 Dustin Heckman
Session IV 2:00 to 2:50	Life (and Red Wing) at Mid-Century: More Than Just “Modern” Sam Edge	Less Common Gypsy Trail Part 3 of 3 Terry Moe Larry Roschen	Exploring Red Wing Bean Pots Kent Williamson		Pot Shops Gary Tefft	

YOUNG COLLECTORS

THURSDAY 9:30am - 12:30pm
AT THE COLLEGE!



FUN & FRIENDS: POTTERY PROJECTS - LEARNING - EXPLORING

9:30 am Meet in the College Commons, depart for ArtReach
10:00 am Arrive at Red Wing ArtReach
12:30 Return to College

Leader: Michelle Heiberger

The Young Collectors program will begin by gathering at Minnesota State College Southeast. This will be their opportunity to get connected with their Red Wing friends before heading out on their field trip.

The RWCS has partnered with Red Wing ArtReach to create a new opportunity for our Young Collectors. These collectors will travel to the ArtReach studio in Downtown Red Wing to learn about clay building, see their new kiln, and paint their own Red Wing. While there, they will be working on a creative way to share with the Kids View participants how making clay into pottery works.

larry's jugs ANTIQUES

1811 Old West Main Street
Red Wing, MN 55066
Shop: 651-388-3331
Cell: 612-719-6113

Watch our
Facebook page for
new items as they
arrive!



We carry a large inventory of antiques, including: porcelain signs, advertising tins, Coca-Cola machines, fountains and signs, scales, gum ball machines, antique slot machines and cash registers, clocks, coffee grinders, stoves, oak furniture, good Eastern stoneware, antique toys and more than 1,000 pieces of stoneware.

REGULAR HOURS:

July and August: Wednesday thru Sunday, 10 a.m. to 5 p.m.
Sept. thru December: Thursday thru Sunday, 10 a.m. to 5 p.m.

2018 CONVENTION HOURS:

Friday, July 6 thru Friday, July 13: 8 a.m. to 6 p.m.

KIDS VIEW

FRIDAY 10am - 2pm AT THE COLLEGE!



FUN & FRIENDS: POTTERY PROJECTS - LEARNING - KIDS SHOW & SALE

Clay and Potters of Red Wing
Date: Friday, July 13
Room: 500
Check in: 9:45 am
Time: 10:00 am - 2:00 pm

The RWCS has partnered with Red Wing ArtReach, the Goodhue County Historical Society, and RWCS member volunteers to create a wonderful all day learning program for our youth members.

Kids View will include the traditions of painting on a vintage Red Wing dinnerware piece and "Make Your Own Stoneware" piece. The participants will have an air-dry clay project to take home with them. Lindsey Rindo and Todd Avery from the Goodhue County Historical Society will share the history of the Goodhue clay pits. Tom Larken from Featherstone Pottery will lead a discussion on turning clay to the pottery.

In addition, Kids View Show & Sale will be the participants' chance to learn about buying and selling from longtime Red Wing collectors with Red Wing Bucks. Pieces are provided by the generous donations of RWCS members all year round.

Lunch provided, please let the RWCS Office about any diet restrictions.

All Projects will be taken home at the end of the day.



Chapter Meetings

Thursday: July 12

1:00 p.m. to 2:00 p.m.

LOCATION

Badger Chapter	215
Gopher Chapter	123
Iowa Chapter	121
Lewis & Clark Chapter	108
Siouxland Chapter.....	126
Southwest Redwingers Chapter.....	202
Trails West Chapter.....	101
Wisconsin Chapter	314

EDUCATION DAY continued from page 11

will learn where and how your favorite pieces of stoneware, art pottery of dinnerware were made and some of the reasons behind the when and why.

Speaker Biography:

Gary Tefft began collecting Red Wing Pottery from the perspective of an engineer and Red Wing native in addition to the usual appreciation for the pleasing aesthetic qualities we all share as collectors. He has been a frequent author of Newsletter articles since the Society's early days. Along with his wife, Bonnie, they researched and collected the history of the Red Wing pottery industry as intently as they sought its wares. Their book, *Red Wing Potters & Their Wares*, in three editions beginning in 1981, presented the fruits of that search. After several years as an observer, he is returning as a seminar presenter this year.

A Tour through Oakwood Cemetery

Onsite at Oakwood Cemetery

1258 Cherry St, Red Wing, MN

Speaker: Dustin Heckman

Session 1: 10:00 a.m. to 11:50 a.m.

Session 2: 1:00 p.m. to 2:50 p.m.

Session Description:

Journey through one of the cemetery's most historic sections as you visit the final resting places of some of Red Wing's most notable names, including: Reverend Joseph Hancock, Abraham E. Welch, T.B. Sheldon, and

more. Learn the difference between male and female Victorian mourning customs, the meanings behind tombstone symbolism, and what life was like for a 19th century Red Wing resident.

Speaker Biography:

Dustin Heckman has worked in local history for over 11 years throughout Minnesota. He currently is the Alliance Coordinator for the Minnesota Alliance of Local History Museums and was the previous Executive Director of the Goodhue County Historical Society. A beginning collector, Dustin lives in Red Wing with his wife and daughter.

Directions to Oakwood Cemetery (meet at the caretaker office)

From the college (10 min.):

Take a left out of the college parking lot. At MN 58N (the traffic light) turn left. Continue down the hill and turn left onto 15th St. Take 15th Street to East Avenue and turn left. East Avenue leads into the entrance of Oakwood Cemetery. Follow road to the right up the hill. At top of hill take an immediate left. The caretaker's office is straight ahead on the right.

From the Pottery Museum (11 min):

Head out of the Pottery Museum parking lot. Turn right on Old West Main Street. At the intersection of Main Street (HWY 61) turn left. At the next traffic light turn right on to West Avenue (by Econo Foods). Continue straight to stay on West Ave. Turn left onto west 7th St. Then turn right onto East Ave. East Avenue leads into the entrance of Oakwood Cemetery. Follow road to the right up the hill. At top of hill take an immediate left. The caretaker's office is straight ahead on the right.

RWCS Bylaws Change Up for Vote at Annual Business Meeting

Per the current RWCS Bylaws, the annual RWCS Convention is to be held on the second full weekend of July every year. While many members prefer this time, there are also members who would like to see it held further away from the 4th of July weekend. There are no imminent plans to change the dates of Convention, but we feel it's important to give the RWCS Board the ability to meet the changing preferences of the membership in the future. Therefore, the members in attendance at the RWCS Annual Business Meeting during the 2018 Convention will be asked to vote on adding the following two paragraphs to the RWCS Bylaws:

"The annual Convention and business meeting shall be held in, or near, Red Wing, Minnesota. It will take place around the end of the second full weekend in July unless the Board so determines that the date may be in conflict with a major event such as a holiday or a suitable venue is not available. In that case, an alternate date in July or June will be selected."

"The Board will review the calendar a minimum of 24 months prior to the meet-

**Friday, July 13 - 3:15 p.m.
College Room 314**

ing. The meeting dates will be published a minimum of 18 months prior to the event, however the Board may change that date up to twelve months prior to the event in case of unforeseen circumstances."

The spirit of these paragraphs is to allow for a change in date based upon changing member preferences over time and that the board will set the date well in advance to allow members adequate time to plan. The RWCS Board will attempt for consistency in dates, while allowing for changing membership preferences. Adding the verbiage "in, or near, Red Wing" allows us to hold a Convention event such as the banquet or auction outside the city limits if suitable and affordable sites are not available in Red Wing. There is no intent to move the Convention out of Red Wing. If you have any questions, please contact the office, RWCS President Paul Wichert or RWCS Vice President Mike Stenstrom.

3 p.m. Tuesday, July 10, 2018

The Bluffs Bar & Grill

N1833 785th St., Hager City, WI

RED WING STONEWARE, POTTERY & ART WARE

AUCTIONS

10 a.m. Wednesday, July 11, 2018

The Bluffs Bar & Grill

N1833 785th St., Hager City, WI

CROCKS, JUGS, LIDS, BUTTER CROCK, REFRIGERATOR JAR, BOWLS, MINI JUGS, GOPHER ON FOOTBALL, HAMM'S BOWL, HAMM'S KRUG KLUB MUGS, DANCING PEASANT MUNCH JAR, BOWL & COOKIE JAR, SAFFRON BOWL WITH LILLEBLAD SERVICE ADV., BEATER JARS, ASH RECEIVER, TRIVETS, YELLOW & PINK PLUM BLOSSOM, PINK SPICE, COUNTRY GARDEN PIECES, SET OF BLOSSOM TIME, NICE ASSORTMENT OF ART POTTERY, PLUS MUCH MORE.

See website for more pictures. Catalogs available for \$5 each – send payment to address below.



RED WING ZINC 2-40 GAL CROCKS, BIRCHLEAF 2-20 GAL CROCKS, ASSORTMENT OF LIDS, ADVERTISING JUGS FROM WINONA, MN PLUS OTHER JUGS, CHURNS, BOWLS, PITCHERS, 20# BUTTER CROCK, 3 GAL WATER COOLER, CHICKEN WATERERS, BEAN POTS, SPONGEBAND, RED WING MOLDS, COMMEMORATIVES 1977-2016, NICE VARIETY OF ART POTTERY, BRUSHWARE, BIRCHBARK CANOES(3), 1965 TWINS ASHTRAY PLUS OTHER ASHTRAYS, AND MUCH MORE.

See website for more pictures. Catalogs available for \$5 each – send payment to address below.



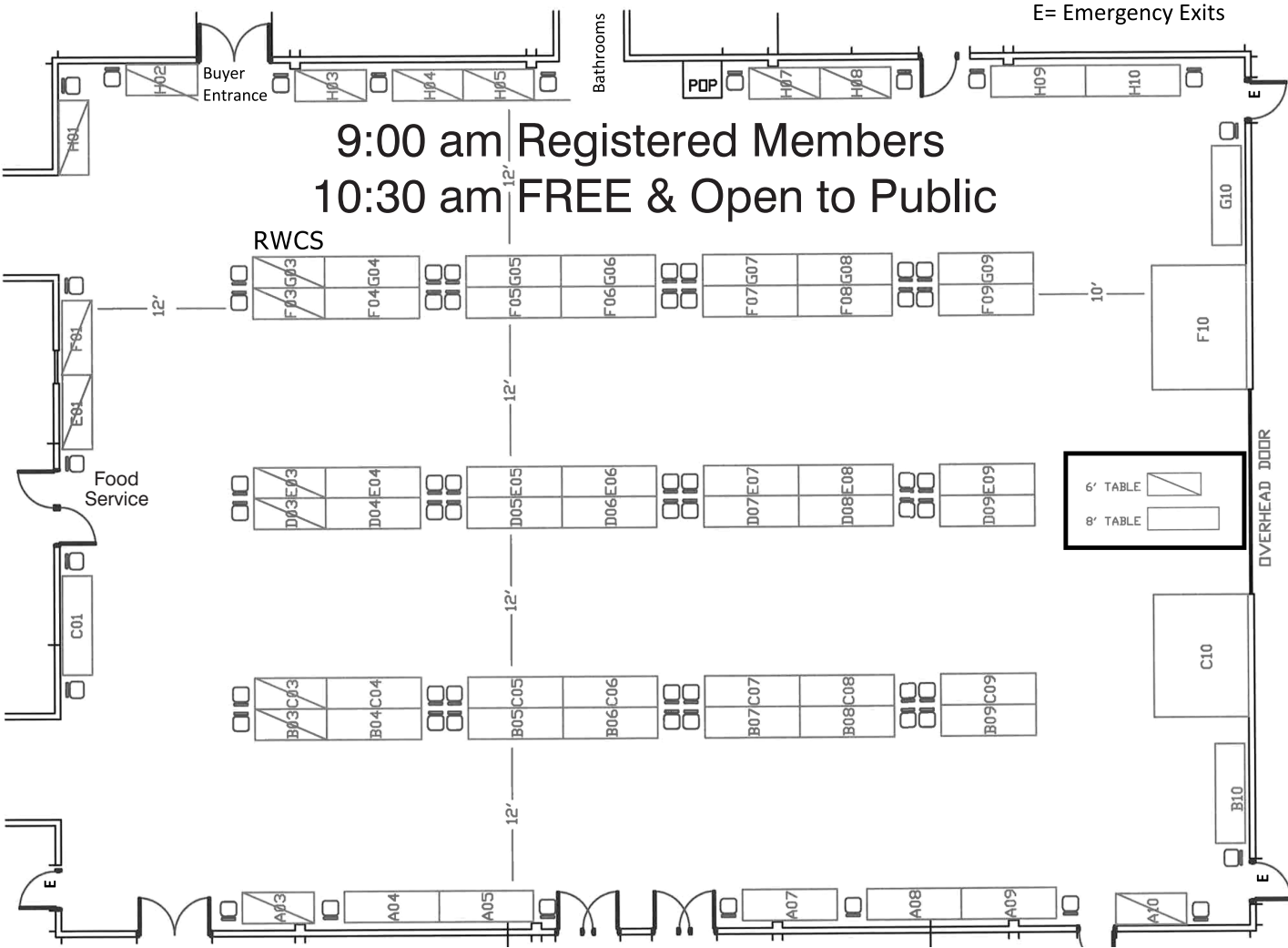
**HOUGHTON'S AUCTION SERVICE • 1831 BOHMBACH DR RED WING, MN 55066
651-388-5870 • WWW.HOUGHTONAUCTIONS.COM**

ANTIQUES & POTTERY SALE

Red Wing National Guard Armory

885 E. 7th Street

SAT., JULY 14, 2018



Name	Location	Name	Location	Name	Location
BEALL, GLENN	A 03	STARICH, TODD	D 03	RED WING COLLECTORS SOCIETY	G 03
KEDING, MONICA	A 04-05	SEXTER, ROGER	D 04-05-06-07	CLIFF OLSON	G 04
PECK, GAIL L	A 07-08-09	TAGLIAPIETRA, JEFF	D 08	PERKINS, DOUG	G 05
SCHessler, LINDA	A 10	OSTERHOLZ, LORRAINE	D 09	WEINKAUF, GARY	G 06
FROLEK, ALAN	B 03	REISS, RAY	E 01, F 01	ROBINSON, MIKE	G 07
GOLDMAN, BRENDA	B 04	GOODHUE COUNTY HISTORICAL SOCIETY	E 03	ROBINSON, RUSSA	G 08
CLEARY, MARY ANN	B 05-06	RICHARDSON, JUDITH	E 04	LAMBERT, NANCY	G 09
ALLERS, DAN	B 07 - 08	TUCKER, ANN	E 05 06	NYBERG, CURT	G 10
MUELLER, MICHELLE	B 09	NORINE, JAMES	E 07-08	SHOWERS, STEVE	H 01-02
MILLER, WAYNE	B 10	WISBAR, GARY	E 09	NYGAARD, DENNIS	H 03
BELLRICHARD, TOD	C 01	BERMAN, LYLE	F 03	CHRISTIANSEN, JACK	H 04-05
DEPASQUALE, DAN	C 03	WHYNAUCHET, GARY	F 04	KELSO, MIKE	H 07-08
TEFFT, GARY	C 04-05-06	STEWART, TERRY	F 05	PETERSON, LARRY	H 09-10
WILLIAMSON, KENT	C 07	EBERTOWSKI, MARK	F 06		
ROBERTS-KNUTZEN, BETTY J	C 08	DECKER, DENNY	F 07-08		
LINDNER, ROSEANN	C 09	LEITHEISER, RON	F 09		
POTTERY MUSEUM OF RED WING	C 10	PAT HOGAN	F 10		

*OUTDOOR SPACE STILL AVAILABLE
CALL 651-388-4004

Current as of June 5, 2018

RWCS CONVENTION APP!

Visit Google Play or the Apple Store to download “In Any Event” to have the RWCS Convention information at your handheld device. From the schedule to hot links to all the event information, it’s a great resource at your fingertips.

Members who downloaded the app at MidWinter will receive an automatic update.



In Any Event...
(Unreleased)
Orcadia Labs, LLC
Everyone

SHUTTLE SERVICE AVAILABLE

Parking available at the Minnesota Correctional Facility
1079 Hwy. 292
(Up the road from Days Inn)
Shuttle Service to Red Wing National Guard Armory

AUCTION

Thursday, July 12
3 pm – 8 pm

SHOW & SALE

Saturday, July 14
8 am - 2 pm

WATCH FOR SIGNS

RED WING COLLECTORS SOCIETY INC.
COMMEMORATIVE INFORMATION

1977	Salt Glaze Crock.....	250	2003	Leaping Pegasus figurine	planter	6,089	2012	Chromoline Vase	A 2,900 3,236 total
1978	Common Jug	350	2004	Brushware Vase	5,790			B 300	
1979	Butter Churn	400	2005	Red Wing Self Draining	Jar	5,323	2013	Stoneware Dog	A 2,718 3,025 total
1980	Spongeware Bowl	400						B 300	
1981	Brown-top Jug	750	2006	Round-Up Teapot	5,191			C 37	
1982	Cherry band Mug	697	2007	5 gal. Birch Leaf	Threshing Jug	4,500	2014	Success Filter	A 2241 2491 total
1983	Stone Mason Fruit Jar ...	1,026						B 212	
1984	Salt-glazed Cooler	1,161	2008	Century of Progress	Transportation Mug.....	3,700		C 38	
1985	Ice Water Cooler	1,750	2009	Red Wing Advertising	Bean Pot.....	3,606	2015	Canteens	A 1943 2180 total
1986	Acid Proof Measure.....	1,982						B 198	
1987	Red Wing Ashtray	2,328	2010	Stoneware Pig.....	3,421			C 39	
1988	Pompeii Plate	2,600	2011	4 gal. salt glaze churn ...	3,300				
1989	Gray Line Pitcher.....	2,682					2016	Brown Top Fancy Jug	with Advertising
1990	Fancy Jug	3,540						A 1758 1990 total	
1991	Pantry Jar	3,551						B 192	
1992	North Star Jug	4,260						C 40	
1993	Chicken Fountain.....	4,819							
1994	20-lb Crock.....	5,660							
1995	Giraffe Planter	6,186							
1996	Cookie Jar.....	7,175							
1997	20# Salt Glaze Crock.....	7,508							
1998	Blue Iris Pitcher.....	7,564							
1999	5 Gal. Koverwate.....	7,444							
2000	Hamm's Pitcher.....	7,190							
2001	Sponge Bowl	6,901							
2002	5 gal. Ball Lock								
	Packing Jar	6,888							



Commemorative Numbers for 2017
Version A 1650 (wing triple marked)
Version B 170 (advertising stamp)
Version C 40 (salt glazed)
TOTAL 1860

Come to Convention events
and have a chance to win a
2018 Special Commemorative!

From registering for Convention to attending the auction, you have opportunities to win a 2018 RWCS Convention Special Commemorative. Each year Bob Morawski, Commemorative Manager, makes 18 special versions of the commemorative, in addition to the A, B, C versions that are ordered by members.

The RWCS would like to congratulate two winners already:

Tim Broezmann - Early Bird Drawing on April 15

Ralph Ryan - Newsletter Submissions

There are still 16 more specials that will be distributed at the 2018 Convention. Here are the ways you can have a chance at one:

2 - randomly selected from all Convention attendees, announced at the Annual Meeting

1 - randomly selected from all Annual Business Meeting attendees

1 - randomly selected from all Auction attendees

2 - randomly selected volunteers

9 - presented to Display Winners (Best of Show & People's Choice in 4 categories and 1 rare item)

Winners of the above Special Commemoratives, including the Early Bird and Newsletter Submission, will be announced at the Annual Business Meeting Friday, July 13 at 3:15 pm.

Looking for a sure-fire way to make that special commemorative yours? One is sold via silent auction in the Commemorative room. The winner will be announced on Saturday, July 14.

Good Luck Members! The RWCS looks forward to congratulating each special commemorative winner.

Midtown Antiques in Stillwater, MN, invites all Red Wing Conventioneers to visit our 65 dealers on 3 floors in the biggest antique & collectible mall in the upper Midwest with many Red Wing items for sale throughout the mall.

Bring your convention program and get 15% off all Red Wing pieces you purchase.
Discount valid July 7th through July 21st - 2018



Midtown Antiques, 301 Main Street South, Stillwater MN located on the St. Croix River just east of St. Paul
Hours: Mon -Thur 10 - 6, Fri & Sat 10 - 8, Sun 11 - 6 Phone: 651-430-0808
Midtownantiques.com Midtownantique@gmail.com Check us out on Facebook and Instagram

RWCS CHAPTER PRESIDENTS

BADGER CHAPTER

Bob Morawski, President
2130 S Ridgeway Dr
New Berlin WI 53146
262-853-8269
morawskib@yahoo.com

**CANNON VALLEY CHAPTER**

Wayne Miller, President
2669 COUNTRY CT
RED WING, MN 55066-4121
wjmillier@charter.net

**GOLDEN STATE CHAPTER**

Bruce Cameron, President
PO Box 690
French Camp, CA 95231
510-537-0325
ffr554@aol.com
goldenstateredwing.com

**GOPHER CHAPTER**

Michelle Mueller
Membership Chair
10736 Perry Drive N
Brooklyn Park, MN 55443
763-493-2638
rwprincess@email.com

**ILLINOIS CHAPTER**

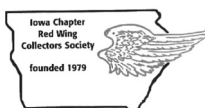
Vacant

INDIANA WINGERS CHAPTER

Cleo Dimmit, President
9658 N.1175 W
Monticello, IN 47950
574-965-2938
cdd9658@comcast.net

**IOWA CHAPTER**

Sandy Short
804 W Merle Hibbs Blvd
Marshalltown IA 50158
641-351-4163
605-261-5646
sandy@maidrite.com

**LEWIS & CLARK CHAPTER**

Sheldon Bohnoff, President
6781 HIGHWAY 22 S.
NEW ENGLAND, ND 58647-9767
701-579-4522
sheldon@ndsupernet.com

**NEBRASKA CHAPTER**

Louise Schleich, President
6412 Chesterfield Ct
Lincoln, NE 68510-2361
402-489-6508
ldschleich@aol.com

**PUGET SOUND CHAPTER**

Wally Armstrong, President
24129 Old Owen Rd
Monroe, WA 98272-7681
360-794-7172
armst101@aol.com

**ROCKY MOUNTAIN CHAPTER**

Vacant

**SIOUXLAND REDWINGERS**

Jon Henslin, President
1020 Lake Alice Dr
Clear Lake SD 57226
320-905-5338
jnhenslin@itcmilbank.com
siouxland.redwingcollectors.org/

**SOUTHWEST REDWINGERS**

Kent Williamson, President
3104 East Broadway Rd Lot 328
Mesa, AZ 85205
rwscockent@juno.com
sw.redwingcollectors.org

**SUNSHINE STATE REDWINGERS**

Don Peterson, Vice President
2902 Limpkin Ln.
Kissimmee, FL 34746-2745
612-859-2101
djpeteron4476@gmail.com

**TRAILS WEST CHAPTER**

Debbie Mischke, President
25 White River Lane
Defiance, MO 63341
314-750-3665
bmischke@centurytel.net
trailswest.redwingcollectors.org/

**WISCONSIN CHAPTER**

Pete Pavloski, President
1411 Rapids Trail
Nekoosa, WI 54457
715-325-3715
pbpav@hotmail.com

**WOLVERINE CHAPTER**

Ken Bahlman, President
44826 Malow Ave.
Sterling Heights, MI 48317
586-731-4628

**RWCS FACEBOOK CHAPTER**

David "Yoshi" Hoffman, President
2821 Lynx Rd
Wausau, WI 54401
715-355-8521
senorh63@charter.net



BOARD OF DIRECTORS / CONVENTION POSITIONS

President
PAUL WICHERT
W247S7000 SUGAR MAPLE DR
WAUKESHA, WI 53189
414-731-0218
redwingr@gmail.com
president@redwingcollectors.org

Vice President
MIKE STENSTROM
6204 SHAWNA ST
WESTON, WI 54476
715-218-8216
mike.stenstrom@gmail.com
vicepresident@redwingcollectors.org

Secretary
ANGELA SHEFVELAND
905 HAWTHORN ST.
RED WING, MN 55066
816-456-2524
Angela.shefveland@gmail.com
secretary@redwingcollectors.org

Treasurer
DAN BECK
2215 HILL PLACE SW
ROCHESTER, MN 55902
507-398-6358
bucksplacewi@gmail.com
treasurer@redwingcollectors.org

Historian
NANCY LAMBERT
17 NEWCASTLE LANE
BELLA VISTA, AR 72714
785-691-7213
nancy194805@gmail.com
historian@redwingcollectors.org

Auction Manager
SCOTT HARDMAN
430 N MANLEY RD
RIPON, CA 95366-3405
209-602-1461
sloheat@aol.com
auction@redwingcollectors.org

Education Manager
DAVID HOFFMAN
2821 LYNX ROAD
WAUSAU, WI 54401
715-355-8521
senorh63@charter.net
education@redwingcollectors.org

Representatives At Large
RUSSA ROBINSON
1970 BOWMAN RD
STOCKTON CA 95206-9654
209-471-4084
rrussa@aol.com
repatlargewest@redwingcollectors.org

RICHARD A. NATYNSKI
N50 W25078 WILLIAM DR
PEWAUKEE, WI 53072
608-617-7424
rnatynski@frontier.com
repatlargeeast@redwingcollectors.org

Commemorative Manager
BOB MORAWSKI
2130 S. RIDGEWAY DR.
NEW BERLIN, WI 53146
262-853-8269
morawskib@yahoo.com
commemorative@redwingcollectors.org

Display
TYLER GREEN
2501 S JEFFERSON AVE
SIOUX FALLS, SD 57105
605-251-9944
display@redwingcollectors.org

Youth Programs (Kids View & Young Collectors)
Goodhue County Historical Society
Red Wing ArtReach

Pre-Registration
JIM & KAREN KEY
1617 ALVINA ST
RED WING MN 55066
651-388-5806
winger.key@gmail.com

Computer Registration
HEIDI HAHLN
4909 FOXFIRE TRAIL
MIDDLETON WI 53562
608-827-0331
hshahln@tds.net

Membership Committee Chair
CHRIS TINCHER
1231 S. CITY VIEW CT
WICHITA, KS 67235
316-708-5272
cctincher@gmail.com

Technology Committee Chair
MIKE STENSTROM
6204 SHAWNA ST
WESTON, WI 54476
715-218-8216
mike.stenstrom@gmail.com

Show & Sale
GAIL PECK
2504 E 21ST
FREMONT, NE 68025-2787
402-721-5721
gpeck1@neb.rr.com

GLENN BEALL
29622 420TH AVE
SCOTLAND, SD 57059
605-464-0516
Reiver.llc@gmail.com

Newsletter Editor
RICK NATYNSKI
PO BOX 198
PEWAUKEE, WI 53072
414-416-9464
Newsletter@redwingcollectors.org

RWCS BUSINESS OFFICE
240 Harrison St Unit 3
Red Wing MN 55066

PO BOX 50
Red Wing MN 55066
Cell: 651-388-4004

Stacy Wegner
Executive Director
swegner@redwingcollectors.org
director@redwingcollectors.org
redwingcollectors.org

Thank you to Red Wing Area businesses for your sponsorships and donations

CONVENTION SPONSORS



larry's jugs
ANTIQUES

MEMBER MEET UP SPONSORS



GOLD SPONSORS

Red Wing Shoes
Nichols Inn
Rodeway Inn
AmericInn

Treasure Island Resort and Casino
Mount Frontenac Golf Course
Randy's Restaurant

SILVER SPONSORS

First Farmers & Merchants Bank
Goodhue County Historical Society
Hanisch Bakery and Coffee Shop
Liberty's Restaurant and Lounge
Red Wing Shoes

Third Floor Antiques
Vogel & Gorman PLC
Red Wing Shoe Store
Red Wing Confectionery

SUPPORTERS

Bayside Tap & Steakhouse
Marie's Underground Grill &
Tap House
Uffda Shop
St. James Hotel
Whimsy's Closet
Backwoods Framing & Engraving
Kelly's Tap House Bar & Grill

Ferrin's Furniture Co.
West End Liquor
Josephson's Clothing Store
Wiederholt's Supper Club
Red Wing Golf Course
Bev's Cafe
Falconer Vineyards & Winery
Cut Above Home



Live & Online

2-DAY AUCTION

Tues., July 10 & Wed., July 11

Sale starts @ 10am

Located at the

Hines Auction Facility

107 County Rd C Ellsworth, WI 54011

AUCTIONEER'S NOTE: Don & Jeanne Madtson are having a 2-day auction of Red Wing stoneware, pottery & collectibles. They have decided to sell a large portion of their private collection. This is just a partial listing as there is too much to list!!

A MARKNET ALLIANCE MEMBER
TERMS: Cash, good check or credit card **EVERYTHING SOLD AS IS**
10% BUYERS FEE & WI 5.5% Sales Tax
(4% Courtesy Fee on Credit Cards)
Sale conducted by: **HINES AUCTION SERVICE**
107 County Road C, Ellsworth, WI
715-273-3377 (O) or 715-307-1275 (C)
REGISTERED WI AUCTIONEERS
JEFF HINES #1174, MarkNet
JACK HINES #513 & KEN PASCHE #2468-052



www.HinesAuctionService.com

RED WING STONEWARE, POTTERY & COLLECTIBLES: Lrg asst of Red Wing Dinnerware inc Delta Blue, Normandy, Spruce, Orleans, Buffet Royale, Round Up, Kashmir, Tampico • Noon Hours Pieces • sev Magnolia & asst RW vases plus • 3 sizes of Fredrick & Kemp Coffee Jars • Red Wing Pop Bottles • 1/2 gal William and Tate jug • 5 gal beehive w/wing and hex bung hole • 1/2 pt. jug bottom signed • 10 gal wing churn with lid • 8 gal elephant ear churn w/lid • RW oil lamp • RW Seaman's Wooden Box • Otto's Wooden Box • Red Wing Umbrella Stand • 3 gal water cooler w/lid • 5 gal Ice Water Cooler w/lid • 6 gal Ice Water Cooler • 40 gal Transition Elephant Ear Crock w/lid • 50 gal Red Wing Crock w/lid and Hex bung hole • 60 gal Red Wing Crock w/lid • 20 gal Salt Glazed Butterfly Crocks • 25 Salt Glazed Butterfly Crock • RW Calendars • Clown Plate & bowl • Trillium Tins Plus & Display Case • One of a Kind and Hard to find Red Wing Dome Top Beer Can • Store Front Window from Sogn, MN • Swim Wear & Sport Sweater from the Oldest Men's Clothing Store in the State (Josephson Clothing in Red Wing, MN) • Mini Jug and much more!!

RWCS CONVENTION

**SCAVENGER
HUNT**



**Starts Thursday
July 12**

**SEARCH EACH
LOCATION LISTED IN THE
BOXES BELOW FOR AN
ITEM MARKED WITH THE
SCAVENGER HUNT LOGO.**

**WRITE THE
CODE FOUND IN
THE CORRECT
BOX BELOW.**

**POTTERY
MUSEUM OF RED
WING**

**A SELLER'S
BOOTH AT
POTTERY PLACE
PARKING LOT
SALES**

**CONVENTION
REGISTRATION
AREA AT THE
COLLEGE**

**RWCS THURSDAY
NIGHT AUCTION**

**COMMEMORATIVE
ROOM**

**DISPLAY ROOM
AT THE COLLEGE**

**ENTRIES MUST BE RECEIVED BY 5:30 AT THE FRIDAY NIGHT SOCIAL IN THE
COMMONS AREA AT THE COLLEGE.**

**THE WINNER WILL BE DECIDED BY A DRAWING OF ENTRIES WITH THE MOST
CORRECT ANSWERS. *YOU MUST BE PRESENT TO WIN***

NAME: _____

CLASSIFIEDS

FOR SALE: Red Wing Ceramastone Greenwich-stone pattern dinnerware. 8 full place settings plus serving pieces & extra cups/saucers. Call or email Len in Michigan: lenschwartz2000@yahoo.com or 517-347-2464.

FOR SALE: Large variety of Albany slip Minnesota Stoneware pieces, Birch leaf & Red Wing crocks & churns, RW Shrimp Boats and a variety of Safety Valve jars. Call Billie at 573-231-6727.

FOR SALE: Complete set of RWCS Commemoratives. Great condition, all offers considered. Leave message at 715-338-5363.

WANTED: 1986 RWCS Convention SPECIAL COMMEMORATIVE – Acid Proof Pitcher with blue sponging. E-mail grandmagretah@yahoo.com or call or text Greta at 847-372-1000. 8/18

WANTED: Bob White: 4 oz. juice tumblers and supper sets; Delta Blue: coffee mugs & beverage mugs; Capistrano: 2 dish tidbit tray; Roundup: 2 mugs; Water Cooler bar petal lids, winged 2, 8 & 10 gal; Wing crocks: 40, 50 & 60 gal with or without lids. Contact Herb at hdaniels000@gmail.com or 417-876-7104. 2/19

WANTED: Still, and always looking for jugs and crocks with Montana advertising. Working hard to improve my collection. Contact Aaron at adbliss@3riversdbs.net or call (406) 788-7851. 2/19

RED WING POTTERY SALE: July 9-13, 8am-3pm. 410 Frenn Ave.

WANTED: Will pay strong price for RW bean pot with Westby, Wis. advertising. Contact Rich at 608-617-7424 or repatlargeeast@redwingcollectors.org.

WANTED: #687 Blue Chromoline vase, Red Wing salt glaze stoneware with unique decorations & RW adv. bean pots from Shamokin, PA & Frazer, MT. Contact Rick at newsletter@redwingcollectors.org or 414-416-WING.

WANTED: Red Wing Daisy Chain dinner plates and salad/cereal bowls serving pieces. Contact Nancy at nancy194805@gmail.com or 785-691-7213.

WANTED: Mini & salesman sample flower pots in any colors. Contact cobe142@cox.net or 402-598-1315.

WANTED: Looking for a Willow Wind pattern Spoon Rest – the last one I need to complete my collection of Red Wing spoon rests! Call Margaret at 651-388-9729.

WANTED: NORTH DAKOTA! Looking for jugs, crocks, butter crocks and churns with advertising. Will pay top dollar for the right pieces. Contact 701-270-0242 or beehive@polarcomm.com.

WANTED: 155 vases, white/ivory, 9" & 12" tall. E-mail ralphryan@charter.net.

WANTED: Daisy chain dinnerware, dinner, salad plates, bowls and serving pieces. Contact Ruth at 218-310-2373 or ruthrjanke@yahoo.com.



Discover Our Menu

Always on any list of "locals favorite" restaurants, Bev's Cafe is a relaxed place to enjoy creative, homemade cooking that includes appetizers, unique salads, soups, sandwiches, hot dishes, dinner entrees and homemade desserts.

We have something for everyone.

Come and enjoy!

221 Bush St. Red Wing
651.388.5227

001732868r1



Buy 1
SHORT-SLEEVED
SPORT SHIRT
2nd Shirt
50% OFF
*Equal or Lesser Value



JOSEPHSON'S
ESTABLISHED 1878
215 Bush Street, Red Wing, MN
651-388-4261
Store Hours: Mon.-Sat. 9-5, Thurs. 'til 8 PM




001729488r1

POTTERY MUSEUM OF RED WING

240 Harrison St., Red Wing • 651-327-2220


Learn the history of the Red Wing Clay Industries
Over 6,000 Items on Display



Purchase tickets today at the door.
WINE-ING FOR RED WING
Wednesday, July 11 6-9pm Fundraiser Auction 7pm
OPEN TO THE PUBLIC

FREE Admission to the
Museum
Tues-Sat 9-5
Sun 11-4

www.potterymuseumredwing.org



001728293r1



PROUD TO CALL
RED WING OUR HOME

REDWINGSHOES.COM

001728293r1

Online Auction

Web Site: Gehlingauction.com

Red Wing Collection

Karl & Dorothy Berger
from Waukesha, Wi
"Over 350 pieces for sale"



Red Wing Stoneware and Related Items



Bidding Opens 8:00 AM – July 10, 2018 & Starts Closing at 6:00 PM – July 20, 2018

Inspection of items will begin on June 1st by Appt. or June 25th without. Hours will be 8:00AM to 5:00PM Monday through Friday and 8:00AM to 11:30AM Saturdays. Closed July 4th. All items will be at

Gehling Auction Company LLC - Indoor Auction Center –
27741 Hwy. 16, Preston, Minnesota.

Payment and pickup can be made on Saturday, July 21 8:00AM - 2:00PM or Sunday July 22nd 9:00 a.m. to 12:00 p.m. If unable to pick up on the weekend, payment wiring instructions will be on your emailed invoice. Payment must be wired on Monday, July 23, 2018 and can be picked up during normal business hours that week.

Master Card, Visa and Discover cards accepted

GEHLING
AUCTION CO. LLC

Preston, MN • 507-765-2131
gehlingauction.com

GehlingRealtor@Auctioneer/Brokersmatt@gehlingauction.com