

RWCS CONTACTS

RWCS BUSINESS OFFICE

PO Box 50 • 2000 Old West Main St. • Suite 302
Pottery Place Mall • Red Wing, MN 55066-0050
651-388-4004 or 800-977-7927 • Fax: 651-388-4042
EXECUTIVE DIRECTOR: STACY WEGNER

EXECUTIVEDIRECTOR@REDWINGCOLLECTORS.ORG

ADMINISTRATIVE ASSISTANT: VACANT

MEMBERSHIP@REDWINGCOLLECTORS.ORG

Web site: WWW.REDWINGCOLLECTORS.ORG

BOARD OF DIRECTORS

PRESIDENT: DAN DEPASQUALE
2717 Driftwood Dr. • Niagara Falls, NY 14304-4584
716-216-4194 • PRESIDENT@REDWINGCOLLECTORS.ORG

VICE PRESIDENT: ANN TUCKER
1121 Somonauk • Sycamore, IL 60178
815-751-5056 • VICEPRESIDENT@REDWINGCOLLECTORS.ORG

SECRETARY: JOHN SAGAT
7241 Emerson Ave. So. • Richfield, MN 55423-3067
612-861-0066 • SECRETARY@REDWINGCOLLECTORS.ORG

TREASURER: MARK COLLINS
4724 N 112th Circle • Omaha, NE 68164-2119
605-351-1700 • TREASURER@REDWINGCOLLECTORS.ORG

HISTORIAN: STEVE BROWN
2102 Hunter Ridge Ct. • Manitowoc, WI 54220
920-684-4600 • HISTORIAN@REDWINGCOLLECTORS.ORG

REPRESENTATIVE AT LARGE: RUSSA ROBINSON
1970 Bowman Rd. • Stockton, CA 95206
209-463-5179 • REPATLARGWEST@REDWINGCOLLECTORS.ORG

REPRESENTATIVE AT LARGE: JERRY ERDMANN
W15416 Fair-Morr Rd. • Tigerton, WI 54486
715-535-2094 • REPATLARGEEAST@REDWINGCOLLECTORS.ORG

AUCTION MANAGER: TODD AVERY
29361 Flower Valley Rd. • Red Wing, MN 55066
651-592-3008 • AUCTION@REDWINGCOLLECTORS.ORG

COMMEMORATIVE MANAGER: BOB MORAWSKI
2130 S. Ridgeway Dr. • New Berlin, WI 53146
262-853-8269 • COMMEMORATIVE@REDWINGCOLLECTORS.ORG

EDUCATION MANAGER: GLENN BEALL
215 W. 7th St. • Logan, IA 51546-1221
712-644-2256 • EDUCATION@REDWINGCOLLECTORS.ORG

JULY CONVENTION SUPPORT PERSONNEL:
Pre-registration – JIM & JOYCE SUTHERLAND
AND JIM & KAREN KEYS

Show & Sale – CINDY & PETE MAY
423-639-2477 • SHOWANDSALE@REDWINGCOLLECTORS.ORG

Display Room – LAURA BEALL
605-464-5941 • DISPLAY@REDWINGCOLLECTORS.ORG

IN THIS ISSUE.....



*One of the more
unique pieces to
show up at this
year's Convention
was this
Greyline shaker
– the only one
known to have
a factory-
applied handle.
For more Jaw
Droppers, turn
to page 5.*

PAGE 3	NEWS BRIEFS, ABOUT THE COVER, CHAPTER EVENTS
PAGE 4	CONVENTION REPORTS
PAGE 5	ELECTION UPDATE, CONVENTION JAW DROPPERS
PAGE 6	YOUNG COLLECTORS CLUB REVIEW, A KID'S PERSPECTIVE
PAGE 7	KIDSVIEW PHOTOS
PAGE 8	CONVENTION PHOTOS
PAGE 10	DISPLAY ROOM WINNERS
PAGE 11	AUCTION RESULTS
PAGE 12	RED WING'S VILLAGE GREEN LINE - PART 2 OF 2
PAGE 14	CLASSIFIEDS
PAGE 16	POTTERS PICNIC PHOTOS

MEMBERSHIP

A primary membership in the Red Wing Collectors Society is
\$25 annually and an associate membership is \$10.

There must be at least one primary member per household in order to have associate
membership. Members can pay for more than one year when renewing their membership.
Contact the RWCS Business Office for additional details.

NEWSLETTER EDITOR

RWCS MEMBER RICK NATYNSKI

PO Box 198

PEWAUKEE, WI 53072

NEWSLETTER@REDWINGCOLLECTORS.ORG • 414-416-WING (9464)

The Red Wing Collectors Society, Inc. Newsletter is published bi-monthly by the
Red Wing Collectors Society, Inc. Suite 300 • 2000 West Main Street Red Wing, MN 55066.

Phone: 651-388-4004 Fax: 651-388-4042

WWW.REDWINGCOLLECTORS.ORG



Postmaster: Send address change to: Red Wing Collectors Society, Inc. Newsletter
PO Box 50 • Red Wing, MN 55066. USPS 015-791; ISSN 1096-1259.

Copyright © 2011 by the Red Wing Collectors Society, Inc. All rights reserved.
The Red Wing Collectors Society, Inc. does not guarantee
the accuracy of articles submitted by individual members.

NEWS BRIEFS

SHOWERS & NYGAARD INDUCTED INTO RWCS HOF

Some of the best news to come out of the RWCS Annual Business Meeting was the well-deserved induction of RWCS members Steve Showers and Dennis Nygaard into the RWCS Hall of Fame. The longtime collectors, each of whom have dug in the Red Wing Pottery Dump for more than 30 years, were recognized for their many contributions



Steve Showers (left) and Dennis Nygaard were greeted with standing ovations when they were inducted into the RWCS Hall of Fame during the Annual Business Meeting on Friday, July 8.

to enhancing the knowledge of Red Wing collectors as a whole. Many of the countless shards they have uncovered in the dump have proven that previously undocumented pieces were indeed produced by the Red Wing or Union Stoneware companies.

In addition to displaying shards from their digs at the Red Wing Pottery Museum, Steve and Dennis often present their findings at educational sessions during Convention and MidWinter. They've also authored numerous articles for the *RWCS Newsletter*.

Although they used to dig primarily to add to their collections, Steve and Dennis now dig more to enhance the knowledge of Red Wing's wares. In addition to their discoveries, both men point to the friendships they've built with fellow collectors as their best "finds". They always extend an open invitation to join them for a dump dig.

SHOW & SALE CHAIRPERSON NEEDED

The 2012 MidWinter and Convention needs a new Show & Sale Chair(s). This position is responsible for managing the Show & Sale at MidWinter and Convention. There is an honorarium with this position. Interested members should contact RWCS Executive Director Stacy Wegner at the business office.

TWO SPECIAL COMMEMORATIVES AWARDED

Congratulations to RWCS Member Marlin Bowen for winning the Special Commemorative in the newsletter drawing and congrats to RWCS Member Genise Hardman for winning a "special" Special Commemorative lottery! The Special Commemorative policy states that when a display wins both the "Best of Show" and "People's Choice" awards, the display winner only receives one Special and the other is awarded as a door prize at the RWCS Banquet. With the excitement of the event, the drawing for the Special Commemorative was overlooked at the banquet. Following Convention, we ran a lottery of banquet attendees and Hardman was selected.

GET CLUED IN TO 2012 CROSSWORD PUZZLE

The 2011 Convention had barely ended when work on the 2012 Convention began. As he was leaving the Convention Banquet, Stacy Wegner asked RWCS Member Paul Wichert, "How is the crossword puzzle coming along for the 2012 *RWCS Convention Supplement*?" He said, "Pretty good. All I need are the clues and answers."

Paul needs your help. If you have any suggestions for the clues and answers, please e-mail them to DIRECTOR@REDWINGCOLLECTORS.ORG and Stacy will forward your message to him. If you'd like to get involved with the puzzle in some other way, please let her know that, too. Thanks to anyone who can help!



ABOUT THE COVER

It arrived with lots of white space and departed with hundreds of signatures. For a fun twist, RWCS Commemorative Manager Bob Morawski worked with Maple City Pottery to have this 35 gallon crock made to commemorate the Society's 35th Annual Convention. Convention attendees signed it while on display in the cafeteria at Red Wing High School. The crock is now on display at the RWCS Business Office. If you missed Convention this year, we've got you covered; this issue has nearly 175 photos taken at the pottery event of the summer! ■

A DONATION TO THE
RED WING POTTERY MUSEUM...
A GIFT THAT KEEPS ON GIVING!



Please send your donations to and visit:
Red Wing Pottery Museum

Pottery Place Mall ~ 2nd Floor, East
2000 Old West Main Street • Red Wing, MN 55066

For more information contact the RWCS Foundation
at RWCSFOUNDATION@GMAIL.COM or Diane Hallstrom
at 612-247-9876. All donations are tax deductible.

CHAPTER EVENTS

Golden State Chapter

1 p.m. Saturday, Sept. 10 at the home of Bruce Cameron in Castro Valley, Calif. Contact FFR554@AOL.COM for more info.

Southern Wisconsin Chapter

A 2nd chapter is being formed in Wisconsin; meetings to be held in southern Wis. Meeting at noon on Saturday, Sept. 10 at the home of Bob Morawski in New Berlin, Wis. Bring a dish to pass for potluck lunch. Business meeting and show & tell to follow. RSVP to Bob at 262-853-8269 or COMMEMORATIVE@REDWINGCOLLECTORS.ORG.

Wisconsin Chapter

11 a.m. on Sunday, Oct. 30 at the Mustard Museum in Middleton, Wis. Beginning museum tour (\$5 per person), followed by lunch, show & tell, business meeting, and commemorative distribution at a local restaurant. For more info on the meeting or the chapter, contact President Pete Pavloski at PBPAV@HOTMAIL.COM or 715-325-3715. Members will receive more meeting info in the mail.

CONVENTION REPORTS



STACY WEGNER

Executive Director

Thank you to all the members who came to the 2011 Convention "Stirring

up the Memories". What a great kick-off we had to celebrate the 35th Anniversary. The 2011 Convention drew as many members and volunteers as last year. Special thanks to all the volunteers, especially those who came to the High School on Tues. and Wed. for set up! I couldn't have gotten it done without you.

This year, Convention kicked off with the Meathead's Brat Feed hosted by Red Wing Pottery & Shops. Special thanks to Scott Gillmer for the space and electricity. Also thanks to Meatheads for serving a wonderful meal. I am happy to report that Meatheads generously donated \$200 to the RWCS Foundation.

Even more members participated in the Crock Hunt this year. New this year we had two prize drawings – one for those who went to all the sites and one for those who went to fewer. Frank Plant won for all sites and Brenda Meyer was our other winner. Participants already offered a number of great ideas for next year.



BOB MORAWSKI

Commemorative Manager

Thanks to everyone who came to Convention and signed the 35 gallon crock; it looks great

and is now at the RWCS Office. This year's Commemorative, a mini 4 gallon churn, was hand-turned, hand-decorated, hand-stamped and hand-thrown salt glaze. The lid was pressed



GLENN BEALL

Education Manager

Thanks to everyone who spoke at Convention. Our keynote speaker, Ronald Schirmer, PhD

from MSU-Mankato had very interesting takes on the pottery made by the first settlers. He even had a stylized "wing" design they used on the pottery made hundreds of years ago. The following people gave some great presentations:

Like every year, lots of new things at Convention generated excitement, such as:

- Attendees received RWCS 35th Convention wristbands
- Thirty-five 2 gallon crocks and actual 4 gallon Commemoratives made by Maple City Pottery were auctioned off at events like the business meeting, picnic, auction and banquet to benefit the Society and the RWCS Foundation
- A 35 gallon crock was signed by attendees
- The Young Collectors Club had a very successful launch

Read below to learn more about the special pieces made by Maple City Pottery. If you'd like to purchase photos of these pieces, visit WWW.MARYOURETGALLERY.COM – the website of photographer and RWCS Member Mary Ouret. Photos available for purchase include the cover of the *RWCS Convention Supplement*, individual chapter crocks and the 35 gallon crocks. A portion of the sales will go to the RWCS.

Again, the RWCS Chapters went all out with their gift baskets – each of which had some great contents! Thank you to everyone who put them together and bid on them. Time to get your thoughts together for next year's basket. Hmm...35 different types of Wisconsin cheese?

We also tip our hats to the following chapters

between two molds. Production numbers were 3300 total pieces; 121 pieces less than last year. Version A target lazy 8, 2965 pieces; Version B butterfly 300 pieces; and Version C bird, 35 pieces to match the anniversary of Convention. Next year's Commemorative will include a 2nd edition to the 1997 *Collecting the Legacy* book. Special editions of the books will be for sale.

The 2 gallon crocks we had made by Maple City were a great success. Most of the chapters turned in artwork for a crock and the rest were decorated to represent the RWCS, Foundation, KidsView and the Young Collectors. All were

Bob Downs, Commemorative production; first-time speakers Paul Boudin and Connie Mathison, new dump finds; Steve Showers, dump digging; Dennis Nygaard, New Brighton Pottery; (Congratulations to Dennis and Steve for their RWCS Hall of Fame inductions.) RWCS Foundation, museum update; Stacy Wegner, how to use the new technology stalking all of us; former Potteries employee Hannes Kuehn, making molds at the pottery; Terry Moe and Larry Roschen, dinnerware paper products and the Red Wing Casual line; Paul Wichert and Linda Krueger, Red Wing Trivia parts 1 & 2 and "Dinnerware Concentration"; and Ruth

that made donations during the Annual Business Meeting. The Golden State Chapter donated \$1250 to be split between KidsView and the Young Collectors; the Sunshine State Redwings donated \$500 to the kids program. Golden State also donated \$1850 to the RWCS Foundation and the Nebraska Redwings donated \$500 to the Foundation in the memory of RWCS Member Dean Dinklage.

Once again, the Trails West Chapter won the Little Brown Jug of Membership for its recruiting efforts between July 2010 and June 2011. Congrats to Trails West members for all of their hard work! Looking for ways to promote the RWCS in 2011-2012? Call me – I can help.

One final announcement: after 13 years of running the Show & Sale, Pete & Cindy May have decided to retire! A great big THANK YOU for all their hard work, commitment and time dedicated to this event at MidWinter and Convention! I understand that several of their volunteers are also retiring. We thank them as well. Interested in taking over the role? Contact me at the office for information.

P.S. Mark your calendars for the 35th Anniversary of the RWCS! Next year's Convention will take place from July 12-14, 2012. Can't wait that long? The Red Wing Speakeasy at MidWinter will be open February 10-12 in Des Moines.

auctioned at Convention. Two of the crocks sold at the Foundation fundraiser on Wednesday went for \$600 and \$725. At \$625, the Wisconsin Chapter's crock brought the most during the silent auction that ended before the business meeting. Next year we will do salt and zinc glaze 2 gallon beehive jugs. The full size versions of the 4 gallon Commemoratives were also very popular; the bird versions sold for \$500 each. I'm proud to announce that the sales of all these special pieces netted a profit of more than \$5500 for the Red Wing Collectors Society!

I already have plans for next year. See you there!

Nerhaugen, writing Convention stories for the *Red Wing Republican Eagle*.

As always, thanks to the speakers; we can't have this part of Convention without you. We tried to have a few new speakers on new subjects this year and thanks to Stacy for finding our model maker Mr. Kuehn all the way from California. If you have any suggestions for new topics, let me know and we will see what we can do.

Remember, we record presentations and put them on DVD, so you can watch many of them at home. Contact Stacy to check one out. Have a great rest of the summer. See you at Midwinter.

ELECTION UPDATE



**ANN
TUCKER**

Vice President

There are many ways that members can help strengthen the Red Wing Collectors Society and further its mission. Volunteering at Convention and

Midwinter is an important way to serve; assisting with KidsView and the Young Collectors Club is another. One more way is to serve as a Board member.

In Spring 2012, elections will be held for the three RWCS Manager positions: Auction, Commemorative and Education. Two of the three current managers have chosen not to run for these positions in 2012. Bob Morawski is running again as Commemorative Manager. However, we'll need candidates for the positions of Auction Manager and Education Manager, as Todd Avery and Glenn Beall have decided to not seek another term. The Nominating Committee may be able to encourage Glenn to run for another term, but he has requested we search for volunteers.

One of my duties as Vice President is to serve as Chair of the Nominating Committee, consisting of four other members, at least three of whom shall not be members of the Board of Directors. In that capacity, I am asking any members who might have an interest in serving on the Nominating Committee to please contact me. Additionally, if anyone has an interest in serving on the Board in the capacity of Commemorative, Education or Auction manager, please contact me or anyone on the Nominating Committee once they have been appointed. I will be happy to answer any questions you might have about what each position entails. All three positions receive a stipend and serve as voting members of the RWCS Board of Directors.

Nominations and resumes of candidates for the election of Auction, Commemorative and Education managers shall be published in the *RWCS Newsletter* at least four months prior to the election. Balloting will be by mail. Ballots will be mailed to all primary members in good standing at the time of the mailing and must be received in the RWCS Business Office by June 30, 2012 to be counted. Associate members must contact the business office to request a ballot. A member must be in good standing as of the June 30 closing date to have his/her ballot count.

Balloting by mail will commence in the spring of each election year with the Representatives at Large being responsible for the auditing and counting of ballots, with the successful candidates to be announced at the Annual Business Meeting. Thank you for your interest. I look forward to hearing from many of you!

Ann Tucker, RWCS Vice President
1121 Somonauk • Sycamore, IL 60178
815-751-5056 • VICEPRESIDENT@REDWINGCOLLECTORS.ORG

CONVENTION JAW DROPPERS



RWCS Young Collectors Club is a Hit!

Story by Wendy Callicoat,
RWCS Young Collectors Chairperson



What a wonderful start for our new RWCS Young Collectors Club. It was quite a sight to see all the Young Collectors wearing their matching T-shirts when out shopping and viewing the booths on our field trip to the Pottery Place Street Sale. The Young Collectors were paired with a volunteer mentor who helped them learn more about the wares of Red Wing. They worked through a scavenger hunt and won prizes for the most items seen while they walked through the sale. A big thanks to all the street vendors that donated items for the special Young Collectors sale table and to Steve Brown for collecting those items. RWCS members Dave Kuffel, Al Kohlman, Barb & Ken Williams and John Dougherty took time to visit with and further educate the Young Collectors with a hands-on learning experience. This type of experience – seeing the wares at a sale and learning the techniques of determining condition and rarity as it relates to price – truly reinforces the existing knowledge many of them gained during their years in the KidsView program.

On Friday morning, July 8, eight smiling faces returned to our group to learn more about dinnerware from California Chapter members Michael & Judy Back. We also talked about using internet sites like eBay and the RWCS website to further their education about Red Wing and also to buy items. We will concentrate more on that area next year as it seemed to be popular with the Young Collectors. The Young Collectors then got a chance to express their creative side by designing and

creating a mosaic piece from actual broken Red Wing items. A big thanks to Carmen Selfridge for her expertise and willingness to put on this seminar. All had fun!

Each participant in this year's event is now a charter member of our new club. They received a limited edition, numbered stoneware jug to commemorate the start of our new club. I feel our first year was a great success. I look forward to developing next year's program. We learned a lot about what worked and what didn't work and look forward to an exciting time next summer.

I will put together a list of contact information so these new Young Collectors can keep in touch in the coming year. Many of them were already talking about texting each other about upcoming flea markets and antique shows. I encourage the members of the Young Collectors Club to keep in touch with me throughout the year at CROCKS701@AOL.COM with suggestions and questions and invite any friends that might be interested to contact me for more information. ■



Convention from a Kid's Perspective

Story by RWCS Member Megan Zamow

Megan Zamow, age 11, attends Parkview Center School in Roseville, Minn. Her favorite pieces to collect are the RWCS Commemoratives.

If you have ever been to the Red Wing Collectors Society Convention, you would know how much excitement goes around in the many different activities and displays. I attended the convention on Saturday, July 9.

To start out my day, I went into the room with all the shiny new Commemoratives. This year, roughly 3300 Commemoratives were sold. Ninety percent were Version A, 9 percent were Version B (a butterfly) and 1 percent or 35 were Version C (a bird). Another thing about Commemoratives is that they are selected by a collector like you. The Commemorative Manager looks for something new and something collectors will like.

Next I went to the Display Room. The minute I walked in, a specific display caught my eye. It was a table filled with broken pieces of salt glazed coolers all found in a HUGE hole, then put back together. They displayed it this year to show what was dug in the dump and celebrate 35 years of the RWCS. Some of the coolers they found were 2, 3 and 4 gallon coolers with the single P decoration and 3, 5 and 8 gallon coolers with the daisy decoration on it. Also found were 50 single P churns. Still nobody knows why they were in the hole.

When I went down to the Show & Sale, I met Neil Ramirez, a kid who participated in the KidsView program this year. He said some of the activities they did in the program were the "Amazing Race", an auction, stamped mini jugs and throwing pieces on a pottery wheel. They also learned how to preserve food in crocks and painted their own pottery piece.

Hope to see you next year at the Red Wing Pottery Convention!! ■

At right, Megan interviews fellow collector Neil Ramirez.



KidsView 2011

Photos by Ashley Floyd, KidsView Alumnus





RED WING COLLECTORS SOCIETY 35TH ANNUAL CONVENTION JULY 7-9, 2011 RED WING, MINNESOTA

*Red Wing
Collectors Society Inc.*
Founded 1975



2011 CONVENTION DISPLAYS

Those who attended the RWCS Convention in 2011 were treated to some fantastic displays. We appreciate the work and creativity of all displayers and volunteers in helping make a well-rounded 2010 Display Room. Thanks also to Stacy Wegner and the RWCS Board of Directors for their dedication and support, and to the Red Wing High School Custodial Staff.

We also thank everyone who spoke to us about doing a display next year. We will be in contact with you soon.

Laura Beall, Display Room Chair, 605-464-5941
DISPLAY@REDWINGCOLLECTORS.ORG



Chapter Display:
North Dakota and Montana advertising stoneware by the Lewis & Clark Chapter.



Dennis Yaeggi Rare Item

Award: 4 gallon salt glaze churn with grape cluster and leaves by Rick Natynski.

Other Rare Items displayed by: Mike & Lynn Anderson, Char & Dave Ackerman, Scott Laughlin, Jacob & Michael Becker and John Braasch.

ART POTTERY



People's Choice:
"Magnolia Line in Luster Oxblood" by Jay & Deanna Juergens.

Best of Show: "Welcome to my Red Wing Garden" by Nancy Lambert.

Other Art Pottery Displays: "Prismatique" by Jamey Jensen and "The Oxford Line – 1954" and "The Life of Jo Ann Stahl" by Brochelle Brennan and Brenda Goldman.

STONEWARE



People's Choice:
"My Little Collection" by Susan Peterson.

Best of Show: "Celebrating 35 Years with 35 Salt Glaze Coolers" by Austin Fjerestad.

Other Stoneware Displays: "All in the Family: Iowa Potters" by Glenn Beall and "Red Wing Stoneware Pitchers – Luv 'Em All!" by Lowell & Corrine Reed.



DINNERWARE



People's Choice & Best of Show:
"Gypsy Trail Chevron" by Tammi Hawley.

MEMORABILIA



People's Choice: "Red Wing Tidbits & Odds and Ends" by Jon Hawley.



Best of Show: "Old Store Ledger with MSWCo. entries" by Steve Johnson.

30 GALLON SALT GLAZE DOUBLE LEAF BRINGS \$5,000

It was hot, it was busy and it was fun! The Red Wing Collectors Society Thursday Night Auction during Convention was certainly all those things and more. This year's event had some interesting offerings. It was fun to see all the sets of dinnerware and the variety of salt glaze items that sold.

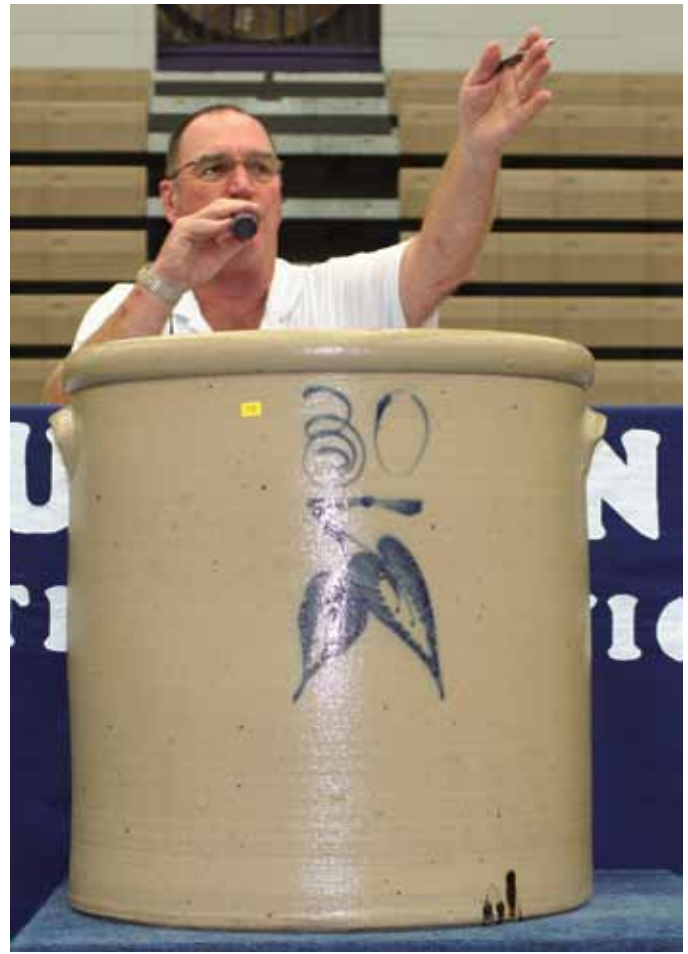
With the economy where it is at, it is difficult to judge how the market will respond and where prices realized will settle in. It has become apparent that it is a great time to be a Red Wing collector. For some categories, prices are reaching 1980s levels. For most this is bad news, but for the long-term growth of our organization, it would be great if this encourages new people to start collecting.

The 2011 RWCS Auction saw total sales of just under \$80,000 for the 280 items being sold. This is down by more than \$10,000 from 2010. The attendance was about the same as last year, but we did have more people staying towards the end. (A big "thank you" goes out to the chapters that showed up in force.)

The top piece sold at the Auction was again salt glaze: a beautiful 30 gallon double leaf crock sold for \$5000. A 1977 Commemorative sold for \$1900, while a 1978 brown jug commemorative sold for \$1100. One of the biggest surprises from the sale was the sewer tile lunch hour raccoon that sold for \$1100. All in all, prices were soft, but what a great time to be buying Red Wing!

The lots of 2010 Commemoratives supplied by the Commemorative Manager generated \$2555 in sales that go directly back into the Collectors Society.

As a final note, I want to extend my heartfelt thanks to the members that make the Auction so much fun. From those of you that submit pieces, to those that get the winning bid. A special thank you also goes out to the more than 25 people who volunteer their time and talents for the Auction. It wouldn't happen without YOU! -Todd Avery, RWCS Auction Manager



Main: Auctioneer Dick Houghton calls the bids for this unsigned, but mint 30 gallon salt glaze double leaf crock, which sold for \$5,000.



This super mint 12 gal leaf crock commanded a premium at \$1900.



This 12 gal Iowa adv crock displayed well, despite damage. It brought \$400.



With a chip and a hairline, this 8 gal front-stamped butterfly sold for \$1450.



Two #1147 Engobes sold: \$600 & \$575.



Mint Jack Frost Cookie jar, \$450.



Even with chips and a manuf. defect, this jug was a deal at \$1075



This mint 2 gal Ice Water with oval on back sold for \$2600.



#672 mint Chromoline candy dish, \$375.



There were two hand-painted Harlequin clown bowls in the sale. The mint one brought \$375 and a damaged one sold for \$130.



Pictured on the cover of the October 2010 RWCS Newsletter, this pair sold for \$120.



This 16-piece set of Charstone Bleu was advertised as never being removed from its original box. It included the original brochure and sold for \$95.

OTHER PRICES REALIZED:

30 gal salt glaze front-stamped butterfly crock, crack on back, \$1900.
RWCS Commem's: 1977, \$1900; 1978, \$1,100; 1979 (2), \$550 & \$500.
5 gal beehive threshing jug with 4-inch wing and oval, \$550.
Two greyline cookie jars, \$575 and \$325 (hairline in lid)
20 gal front-stamped salt glaze butterfly crock, repaired, \$1000.

4 gal oval over wing Ice Water cooler, rim chip, \$575.
August Becker cherryband adv. pitcher, \$1350.
#571 Rumrill white nude Athenian footed bowl, \$400.
8-inch Brushware hanging pot with leaves & acorns, \$210.
100+ pieces of Tampico dinnerware, incl. water cooler, \$550.
2 gal Albany slip churn w/lid, lid chips, \$300 (at right).





© Copyright 2011 Terry Moe and Larry Roschen
Photos courtesy of the authors and
WWW.REDWINGDINNERWARE.COM

Red Wing Dinnerware & The Village Green Line

PART 2 OF 2

The information presented here has been gleaned from vintage Red Wing brochures, catalogs, price lists and internal documents as well as trade journals and magazines. In this discussion, a "pattern" is a dinnerware set in a particular shape with a unique handpainted design or color scheme. A "line" is a group of patterns that share the same shapes but have different handpainted designs or colors. Some of the introduction and exit dates presented have not been verified because of gaps in available documentation. When uncertain, an estimated date is provided. The end point of a pattern can be difficult to ascertain. In the 1940s and 1950s a discontinued pattern no longer appeared on price lists; in the 1960s patterns that were no longer in production remained on price lists as "limited stock" with only a few pieces listed. Here a pattern is considered to be discontinued when a full range of items was no longer available and orders were limited to remaining stock.

Each pattern has been assigned an Availability rating and a Collector Interest rating as described below. Availability represents an average for the pattern in question, however the scarcity of certain pieces within the pattern may differ. Collector Interest refers to the pattern in general, but there may be specific pieces in any pattern that are of greater interest to specialty collectors (teapots, pitchers, salt & peppers, etc). Please keep in mind these ratings are the authors' observations; your experience may vary.

Availability

- 1 – Rare
- 2 – Very scarce
- 3 – Hard to find
- 4 – Average
- 5 – Readily available

Collector Interest

- 1 – Highly sought, demand exceeds supply
- 2 – Primarily of interest to specialty collectors
- 3 – Above average
- 4 – Average
- 5 – Below average

The name "Village Green" referred to both a line and a pattern. The Village Green pattern was introduced in 1952; other patterns using the same shapes were added in subsequent years. Thus, Village Green also became the name for a line of dinnerware patterns.

Provincial Dinnerware **Availability: 2** **Interest: 4** **Years: 1964? - 1965**
Provincial Bakeware **Availability: 4** **Interest: 5** **Years: 1963 - 1967**

Provincial was an attempt to blend Village Green-shaped dinnerware with the revival of a 1940s cookware set. Provincial dinnerware consisted of 15 Village Green pieces glazed in a rich rust color. A brochure named this color "bittersweet red". The cover for the sugar bowl and the tops of the salt & pepper shakers were beige. Interestingly, this brochure promoted a 10-inch casserole stand as a handled dinner plate, which was not seen with other Village Green line patterns. Provincial Bakeware was an update of Provincial Cooking Ware from the early 1940s. It consisted of casseroles, pots and baking dishes. Exteriors of the Bakeware had a beige glaze while the interiors and the covers were bittersweet red to match the dinnerware. The rust colored dinnerware was made for only a year or two and is difficult to find today; the bakeware sold better but doesn't attract much interest from collectors.



Above: Provincial dinnerware plate and syrup jug
Below: Provincial bakeware bean pot and casserole

Village Brown **Availability: 2** **Interest: 4** **Years: 1964 - 1965**



Village Brown was not a full dinnerware pattern. It was a color option that replaced the solid green pieces of Village Green with solid brown pieces. Village Brown was included on the 1965 price list and a 1964 Village Green brochure. The brochure stated the following all-brown Village Brown pieces were available: 6-, 8- and 10-inch plates, saucer, four bowls (vegetable serving dish, rim soup, cereal, sauce/fruit), and 13- and 15-inch platters. Village Brown may have been established as a means to sell finished pieces remaining after the relationship with Ernest Sohn ended (see next page).

At left: Village Brown plate and bowls

Village Wheat **Availability: 1** **Interest: 2** **Years: Unknown. Mid 1960s?**

Village Wheat was similar to Village Brown in that it was not a full dinnerware pattern, but rather a color option. In this case, the standard Rustic Brown was replaced by a tan or wheat color. Thus Village Wheat pieces were a combination of green and tan. No documentation is known and the official name is uncertain. An interview with a Potteries employee published in the *RWCS Newsletter* stated that only a few sets of Village Wheat were made, including 4 or 5 water coolers. The idea was dropped and never put into full production due to lack of interest. Known pieces include 4- and 10-cup pitchers, teapot, salt & pepper shakers, 6-inch salad bowl, beverage mug, handled marmite, casseroles, rim soup, creamer & sugar, large salad bowl, divided vegetable dish, covered coffee pot and large warmer (water cooler stand).



Above: Village Wheat salt shaker and teapot



Matte Green and Matte Pink Casseroles

No documentation has been found to explain the existence of Matte Green and Matte Pink 2 quart casseroles in the Village Green shape. The entire casserole, including the cover and the interior, was glazed in solid green or pink. Enough examples have been found to be convinced these were made by Red Wing Potteries rather than by a hobby shop using an old Red Wing mold. Most likely these were made for a custom order, but who placed the order? Some speculate the pink casseroles were made for Mary Kay Cosmetics to be used as a reward or sales incentive for their sales staff. But no documentation to support that theory has been seen.

Ernest Sohn

Ernest Sohn was a well-known designer who contracted with various businesses to make products for his sales company. His dealings with Red Wing were not well documented, but at least two lines of dinnerware items were produced for Sohn. "Butter Mold" is the better known of the two. It consisted of serving pieces such as pitchers, teapots,



casseroles, bowls, platters, etc. The pieces had a ribbed effect in the glaze, similar to Village Green. Most Butter Mold pieces were dark brown, dark green, or yellow (uncommon). Each piece was marked with a design taken from a vintage butter mold. The design featured a fern and leaves enclosed by five rings, and included the letters "E.S. USA". Production years are uncertain, but most likely fall between the late 1950s and early 1960s. An ad for Sohn's Butter Mold line appeared in a February 1961 magazine.

Sohn Butter Mold coffee server & Lazy Susan.

Red Wing also produced all-brown pieces in Village Green shapes for Sohn. Sohn's brown glaze tended to be darker than Village Green's Rustic Brown. All-brown Village Green-shaped pitchers, coffee servers, beverage servers, syrup jugs, beverage mugs, salt & peppers, sugar bowls, and Village Brown dinner plates with Sohn features have been found. These Sohn features included the all-brown glaze, handles wrapped with rattan, a triangular silver label that stated "Oven Proof China Designed by Ernest Sohn", non-Village Green covers, and unusual bottom markings. Sohn's covered pieces did not use standard Village Green covers. Two different covers were made; one was brown-glazed pottery with a large round knob, the other was a copper metal cover with a large round wood knob. On some bottom-marked Sohn pieces the Red Wing name had been scratched out, leaving only "USA". Molds for other pieces were made to imprint only "USA", which may indicate the "USA" molds were made specifically for Sohn. Production years again are uncertain. But an internal company document dated June 1962 titled "Discontinued Glaze Inventory" includes Sohn Green and Sohn Brown with the word "dump" written after the glaze name. This would imply the relationship with Sohn likely ended sometime after the February 1961 Butter Mold ad but before June 1962.



Sohn coffee server & foil label.



BUY • SELL • TRADE
I'll buy one piece, or the
whole collection.
Also taking consignment.

larry's jugs ANTIQUES

1811 Old West Main St.
Red Wing, MN 55066
612-719-6113 (cell)

Hours: 10 a.m. to 5 p.m.
Wednesday thru Sunday

Grand Opening!

September 24-25
10 a.m. to 5 p.m.



Also visit my booth at Countryside Antique Mall: 31752 65th Ave. Cannon Falls, MN 507-263-0352
Mark your calendars! We'll be at the Stoneware & Antique Sale in downtown Walnut, IA on Sept. 17-18.

AD RATES

Classified ads are 20¢ per word; \$4 minimum charge and are accepted on a first-come, first-served basis. In addition to appearing in the newsletter, classifieds and display ads are posted on the RWCS website.

Ads are divided into the following sections: Red Wing For Sale, Red Wing Wanted, Other Pottery For Sale, Other Pottery Wanted, Events, Auctions, Clubs & Publications and Websites, Announcements and Services. You will not be charged for these words, but please indicate which section your ad should be placed in. If ad is to run in more than one issue, please indicate at time of placement. (Note: the small number at the end of an ad tells when the ad expires, e.g., 12/09. Ads without dates are one-time ads.) Please type or print clearly and proofread before submission.

DISPLAY ADS

Display Ad Size	1x	6x
Full page	\$425	385
1/2 page (<i>horizontal or vertical</i>)	225	205
1/4 page	125	115
1/8 page	85	70

Display Ad Dimensions

Full Page	7 1/2 x 10
1/2 page (<i>horizontal or vertical</i>)	7 1/2 x 4 7/8
1/4 page	3 5/8 x 4 7/8
1/8 page	3 5/8 x 2 1/4

Display ads are accepted on a first-come, first-served basis. The publisher reserves the right to refuse ads for any reason.

Ads must be supplied electronically as an EPS or PDF file for PC. If you are unsure about acceptability, inquire with the editor. There is an additional 10 percent fee for design and makeup if needed (\$10 minimum).

DEADLINES

Issue	Ads	Editorial	Mail Date
February	Jan. 10	Jan. 1	Feb. 15
April	March 10	March 1	April 15
June	May 10	May 1	June 15
August	July 25	July 15	Aug. 31
October	Sept. 10	Sept. 1	Oct. 15
December	Nov. 10	Nov. 1	Dec. 15

EDITOR ADDRESS

Make checks payable to RWCS and mail with ads:

Rick Natynski
PO Box 198
Pewaukee, WI 53072

Can also submit ads by e-mail: send to NEWSLETTER@REDWINGCOLLECTORS.ORG and send checks separately. Or, call Rick at 414-416-WING (9464).

CLASSIFIEDS

RED WING FOR SALE

Dashers for 2011 RWCS Commemorative churn. Send \$4 to Donald Peterson, 4476 Carey Rd., Duluth, MN 55803. 218-721-3888.

RARE RED WING FIND! #151 Red Wing Floor Vase, 22" tall. Made in approximately 1929. Green inside with a stucco effect on the outside, brushware. Circle stamped on bottom with the following: Red Wing Union Stoneware Co. Red Wing, Minn. Will professionally package and ship via UPS. \$800.00 includes all. Bank check only. Will supply pictures upon request. Contact Lorraine Steiner at 631-331-4146 or JKSRETIRED@MSN.COM.

1940s brown Red Wing #871 vase. Perfect condition. \$35.00. Contact Barbara KHH0725@ATLANTICBB.NET.

Wish to sell complete set Lute Song. Excellent condition, service for 12 also includes: bread tray, gravy boat, cream/sugar, veggie platters, salt/pepper, \$750. Also Lotus pieces: 12 plates, saucers, salad plates, and 3 cups, \$250. Delivery possible, location MN: 218-692-2907.

Thirteen (13) Commemoratives, 1990-2002 plus Collecting the Legacy book. All for \$750 or MAKE OFFER. Have four original boxes. Call 503-652-2765 or e-mail JSSETAKS@AOL.COM.

50 Gal. Red Wing Crock and lid in good condition. 50 gal Crock, \$1000.00; 50 gal Crock Lid, \$1000.00; Crock with lid, \$1800.00. Contact BILL8143796@YAHOO.COM or 814-667-3796. Can e-mail pictures if interested. Located in Huntingdon, PA.

4 spongeware bowls in blue/reddish brown color. One 7" cap bowl & 3 nesting 7/8/9" bowls (7" has chip in lip) - all others are in excellent condition. Contact Sharon at INNTEMPS@AOL.COM.

Quarter-sawn oak frame custom-made for displaying your 35th Annual Convention Tile - only \$29.50! Save on shipping - free delivery to Convention. Additional tile frames available: 4x8 \$35.50, 4x6 \$31.50, 6x6 \$37.50, 6x8 \$39.50 and 8x8 \$41.50. Call or email: John Mathews DOVETAIL@LIVE.COM. or 608-764-1454. 4/12



Handles and wooden lids. Send SASE for flyer to Larsen's Collectibles, 757 120th Street, Hampton, IA 50441-7555. Phone 641-866-6733. 4/12

RED WING WANTED

Wanted: Monroe, Wis. advertising pieces. Call Scott at 608-558-7372 10/11

Wanted: Looking for any advertising pieces from Knapp or Clear Lake, Wisconsin. To sell, contact Tim at TWYSS@CLEARLAKE.K12.WI.US or call 715-263-2118. 4/12

Wanted: Version B, Version C, Triple Version and Special RWCS Commemoratives from any year. Also looking for advertising crocks, jugs and churns - especially pieces with a decoration & ad. Scott at COBE142@COX.NET or 402-331-4749.

Wanted: These Chromoline pieces: #680 & #681 in orange and rust; #675, #687 and #M3006 in blue and green. Contact Rick at NEWSLETTER@REDWINGCOLLECTORS.ORG or 414-416-9464.

EVENTS

Elkhorn Flea Market, Walworth County Fairgrounds in Elkhorn, WI. Sunday, Sept. 25. More than 500 quality dealers! Gates open at 7 a.m. Admission is \$5/person. For more info, visit WWW.NLPROMOTIONSLLC.COM.

CLUBS AND PUBLICATIONS

New! 2012 price update for *Red Wing Dinnerware Price & Identification Guide*: \$6 plus \$2 postage. Dinnerware book & 2012 price update: \$18.95+\$3 postage. Call 773-384-3245 for ordering info. 10/11

AUCTION

Located: W24024 State Road 54, Galesville, WI - Located between Galesville, WI & Winona, MN on St Rd 54/93. UNDER TENT. Watch for NIC auction arrows.

LARGE 2-DAY AUCTION
Saturday, Sept. 24th
& Sunday, Sept. 25th

Sale Time: 9:00 AM

Check our website: www.northerninvestment.com for color photos & complete listing.

SELLING COMPLETE INVENTORY: Over 100 Red Wing advertising bean pots; RARE JJ Wolfram & Certainly the Peterson Co. advertising pcs; RW Pepe, Random Harvest, Damask, Smartset, Magnolia, BobWhite & Village Green dishes; RW art pottery & stoneware, incl: 12 gal, 3-2 gal & 1 gal salt-glaze crocks; Circle Star 6 gal churn; several other advertising bowls, jugs & crocks; spongeware. Also selling will be: Advertising signs; tins; antique & vintage toys; art glass & pottery; primitives; smalls & much, much more!

Terms: Cash or check. Auction day announcements precede printed material. List is subject to change. Items sold "AS IS". For a list of our auctions and real estate listings, visit us at www.northerninvestment.com!

BEANPOT ANTIQUES

Kurt Reinhard - Owner

NORTHERN INVESTMENT CO., Clerk & Cashier #10 Registered Wisconsin Auction Company, Arcadia, WI 608.323.3330 - nica@northerninvestment.com Rep. Steve Eddy, 608.865.0777. AUCTIONEER: John Marg, Black River Falls, WI, Registered Wisconsin Auctioneers' License #231.

**Free
admission!**

**Rain or
shine!**



Walnut Antique Fall Festival!

Sept. 17-18, 2011 • Downtown Walnut, IA

***The Granary Mall & Walnut American Legion Hall
Stoneware • Primitives • Advertising • Art Pottery***

Several stoneware and pottery dealers will be wheeling and dealing, including Larry Peterson, Gail Peck, Jim Hackett, Scott Spompinato and Tim & Roxie Lockard!



Featuring stoneware from Red Wing and other Midwestern manufacturers:

- Salt glaze
- Zinc glaze
- Advertising
- Kitchenware
- Much, MUCH more!



"Come for the great stoneware and antiques, stay for the hot dogs and soda!"

For indoor/outdoor dealers space inquiries, call 641-862-3239

****Spring Walnut Stoneware & Antique Sale slated for April 2012 – dates TBA.****



2011
**Potters
Picnic**

COMING IN THE OCTOBER ISSUE...



A
BIRD
FROM
THE
WEST
COAST



WINNIPEG
ADVERTISING