



**Above:** "Hobby Shop" Casual beverage server. **Below:** Amateur cookie jar from the Casual mold.



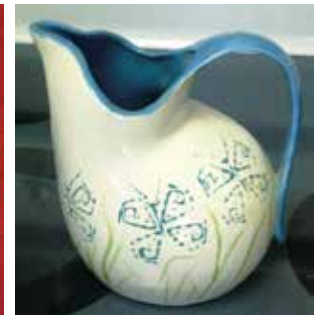
## POST-PRODUCTION ITEMS from old Red Wing molds

After Red Wing Potteries ceased production in 1967, most of the company's assets were sold to the public, including the molds used to form dinnerware and art pottery. Art schools and amateur potters obtained many of these molds. There was no effort on Red Wing's part to remove or obliterate the Red Wing name from the molds since the company was no longer in business and had no interest in maintaining copyright protection. Thus it is quite common to find amateur or hobby shop pieces made from Red Wing molds with the Red Wing name on the bottom.

An experienced collector will learn to differentiate authentic Red Wing pottery from post-production pieces. Color is an important clue. Red Wing test and "Lunch Hour" pieces usually used glazes available in the shop. A "Red Wing" item in colors not seen on other Red Wing pieces is probably a "Hobby Shop" piece. Bright, garish colors and wild designs that don't have the Red Wing "look" are another clue, although Red Wing also made items on occasion that would fit that description. Weight can be another telling factor. Amateur pieces are often made of lightweight clay; if an item weighs considerably less than a comparable Red Wing piece, it probably is not authentic. It's also possible to find amateur pieces that are heavier than the genuine Red Wing piece. Finally, pottery that has information scratched into the bottom is almost certainly not vintage Red Wing. Amateur artists and art school students usually scratch their name or initials and a date into the wet clay on the bottom of the piece. This practice is not found on authentic Red Wing dinnerware. Red Wing test pieces usually have hand drawn code numbers in ink on the back; they may also have color swatches. Lunch hour dinnerware is usually signed or initialed and dated by the artist in ink or with colored glaze on the back. **Left:** "Hobby Shop" Ceramastone covered casserole. **Right:** "Hobby Shop" Casual creamer and 1 qt. Futura pitcher (far right).



Beverage server and cups from Duo-Tone Line molds. The inset at right shows the bottom of the server.



## OWNER-ENHANCED Red Wing Dinnerware

Authentic Red Wing items that have been "enhanced" by the owner are another potential source of confusion for collectors. Most of these involve the use of cold paint over the glaze to decorate an item. These can be confused with lunch hour or test pieces, but any artwork on those would be under the glaze. If the decoration can be scraped off, it's almost certainly an owner-enhanced piece. Shown at right are two such pieces – a cold-painted Town & Country syrup jug and a cold-painted Gypsy Trail Hostess Ware pear cookie jar (far right).

## RECENT DISCOVERIES

Three old dinnerware patterns have been documented and attributed to Red Wing since this series of articles began five years ago. They were not included in this series; however articles about them have been published in past issues of the *Red Wing Collectors Society Newsletter*. "Pansy" was introduced in the October 2012 issue and "Red Wing Colored Kitchenware" was featured in the October 2014 issue. Finally, "Red Wing Mixer Bowls" is featured earlier in this issue.

## ADDITIONAL DOCUMENTATION SOUGHT

We're looking for additional vintage Red Wing documents to fill the gaps in our timeline. We are particularly interested in documentation for the Wreath and Pansy patterns and in price lists dated 1941 to 1948, 1953, 1955 and 1964. If you have access to such documents and you wish to sell them or are willing to share a photocopy, please contact Larry at [REDWINGLR@AOL.COM](mailto:REDWINGLR@AOL.COM) and Terry at [TMMOE@GYPSYTRAIL.NET](mailto:TMMOE@GYPSYTRAIL.NET).