

Red Wing's Concord Line

© Copyright 2010 Terry Moe and Larry Roschen

PART 1 OF 2

The information presented here has been gleaned from vintage Red Wing brochures, catalogs, price lists and internal documents as well as trade journals and magazines. In this discussion, a "pattern" is a dinnerware set in a particular shape with a unique handpainted design or color scheme. A "line" is a group of patterns that share the same shapes but have different handpainted designs or colors. Some of the introduction and exit dates presented have not been verified because of gaps in available documentation. When uncertain, an estimated date is provided. The end point of a pattern can be difficult to ascertain. In the 1940s and 1950s a discontinued pattern no longer appeared on price lists; in the 1960s patterns that were no longer in production remained on price lists as "limited stock" with only a few pieces listed. Here, a pattern is considered to be discontinued when a full range of items was no longer available and orders were limited to remaining stock.

Each pattern has been assigned an Availability rating and a Collector Interest rating as described below. Availability represents an average for the pattern in question, however the scarcity of certain pieces within the pattern may differ. Collector Interest refers to the pattern in general, but there may be specific pieces in any pattern that are of greater interest to specialty collectors (teapots, pitchers, salt & peppers, etc). Please keep in mind these ratings are the authors' observations; your experience may vary.

Availability

- 1 - Rare
- 2 - Very scarce
- 3 - Hard to find
- 4 - Average
- 5 - Readily available

Collector Interest

- 1 - Highly sought, demand exceeds supply
- 2 - Primarily of interest to specialty collectors
- 3 - Above average
- 4 - Average
- 5 - Below average

Red Wing introduced the Concord shape in 1941. A total of 17 to 20 Concord patterns were introduced between 1941 and 1957; the number depends on whether you consider color variations to be distinct patterns. The patterns introduced in 1941, 1952 and 1955 had hollow ware decorated to match the flatware; patterns introduced in other years were glazed in solid colors that were usually shared with other patterns. A 1942 price list showed that covers were initially considered optional for the Provincial and Concord lines. Sugar bowls, cream soup bowls and casseroles could be purchased either with or without a cover. Also, new pieces not made for the 1941 introduction were added later to both lines. For example, the covered beverage server was added in 1949. By this time, Orleans and Brittany were being phased out and Harvest had been discontinued, thus no beverage servers in those patterns were ever made. New items such as the celery, relish and butter dishes, spoon rest, divided vegetable, egg plate, supper trays and gravy boat were added to the Concord line in the late 1940s and early 1950s. These items can be difficult to find in the Lexington pattern because they were not made until nearly the end of Lexington production, and they were never made in the Harvest pattern.

Harvest

Availability: 2 Interest: 1
Years: 1941 - mid 1940s

The Harvest pattern was decorated with fruit and a yellow/gray border on a white background. Cherries, grapes, a pear and an apple were included on all pieces in varying combinations, depending on the piece. The dinner plate and chop plate (platter) also featured a pineapple. Some items had the fruit in a compote bowl while others did not. Harvest did not sell well and was discontinued by 1946 or earlier.



Lexington Availability: 5 Interest: 4 Years: 1941 - 1955



Lexington (often called Lexington Rose) was also introduced in 1941 and featured a large red rose on a white background on all pieces. A lighter shade of red was used on early pieces of Lexington; by the 1950s the color darkened considerably. Lexington was the only Concord pattern with chop plates (platters) made in two sizes. The original 1941 version was 14" x 10.5"; the size changed to 13" x 10.5" when new Concord patterns were introduced in the late 1940s.

Magnolia Availability: 5 Interest: 4 Years: 1947 (?) - 1956



Lotus

Availability: 5
Interest: 4
Years: 1947 (?) - 1957



By the late 1940s, Gypsy Trail and the cook set lines were phased out. Soldiers returned home to start families, and Red Wing's attention moved to providing them with new dinnerware patterns. The Concord line now expanded to add Lotus, Magnolia, Chrysanthemum and Morning Glory (pink) to the existing Lexington pattern. Flatware for these new patterns had white backgrounds hand-decorated with their

Chrysanthemum

Availability: 3 Interest: 5 Years: 1947 (?) - 1953



namesake flower. But the exteriors of the hollow ware for these new patterns were glazed in solid colors, not hand painted with the same decorations as the flatware as had been done with Harvest and Lexington. Only the covers featured a portion of the pattern's hand-painted decoration. A July 1949 price list showed Metallic Brown, Chartreuse and Gray as the three available exterior colors for all four patterns. While not listed in the dinnerware brochures, vases and planters decorated to match Lotus and Magnolia dinnerware were introduced in 1952. The covered beverage server, gravy boat and 13" x 10.5" chop plate were added to the Concord line during this period.



Blossom Time Availability: 4 Interest: 4 Years: 1950 - 1955 Morning Glory Blue Availability: 2 Interest: 4 Years: 1950 - 1951

By October 1950, Blossom Time was added and Morning Glory was now available in two versions (pink or blue flowers). Blossom Time featured red rose blooms along with green leaves, and it was the third Concord pattern for which matching vases and planters were made. Three new exterior colors (Sunlight Yellow, Dark Gray and Forest Green) were available. Red Wing brochures and catalogs recommended certain exterior colors for use with each pattern, but the final decision was up to the customer. The rim soup bowl was added to the Concord line in 1950.

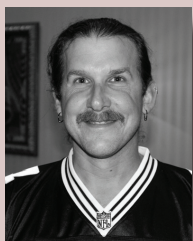
Photos courtesy of the authors and WWW.REDWINGDINNERWARE.COM.



The remaining patterns in the Concord Line will be featured in the June issue of the RWCS Newsletter.



MANAGER CONVENTION UPDATES



BOB MORAWSKI
Commemorative Manager

With Convention fast approaching, I wanted to remind everyone about a few key points regarding the 2010 Commemorative. We will once again have three versions of the Commemorative this year. While I received a small amount of comments from people who did not like the three versions, I personally received an overwhelming amount of positive comments and feedback from members indicating they wanted the three versions to continue. Whether you pick up your Commemorative at Convention or have it mailed, you have the same chance of receiving any version. The production break down is 90 percent of all

pieces made will be version "A", 9 percent will be version "B" and version "C" will be 34 pieces to match the RWCS anniversary.

The Thursday Night Auction will include three sets of 2009 Commemoratives consisting of a version "A", "B" and "C" in each set. The auction will also include a single piece that has all three versions on it. We will once again have a silent auction in the Commemorative room, as well. The auction will include a set of all three 2010 versions, the Special Commemorative from 2010 and a couple of other surprises. Bidding on these pieces will end at 10 a.m. on the Saturday of Convention.



TODD AVERY
Auction Manager

Spring is in the air here in Red Wing. In a few short months the auctioneer will sing his song and we'll be enjoying another Red Wing Collectors Society Auction. My postal carrier has already been getting a workout from auction form deliveries. We are seeing some great pieces being submitted for this year's event.

I hope everyone gets a chance to submit a piece (or two) for your auction. It was fun to see some of the incredible pieces

we had last year. We always enjoy the top end pieces, but it's the regular stoneware, dinnerware, art pottery and related items that make it a great auction for everyone.

This coming year we will do our best to make it a great event. We have added the option of submitting a second item into the auction. I never want to make the auction too big or last too long, but we had room last year and decided this would be a fair way to expand our offerings.

I'm looking forward to seeing you all in Red Wing this summer and wishing you a safe and memorable visit. And remember, get those auction forms sent in by May 15!