

RED WING  
COLLECTORS SOCIETY



RED WING HIGH SCHOOL  
RED WING, MN  
JULY 7-9, 2016



WWW.ERWCS.ORG  
800-977-7927



SPONSORS



## Greeting from the President

**W**elcome to the 40th Annual Red Wing Collectors Convention! Each year, the annual RWCS Convention brings hundreds of stoneware collectors to Red Wing seeking new pieces for their collections, renewing friendships, and touring the beautiful City of Red Wing. This year marks the 40th time the Convention has been held and everyone is looking forward to covering the City from end to end and gathering with old friends in new and familiar places. Returning collectors have their favorite restaurants, antique shops, and museums to tour as well as searching for more of the City to enjoy this year. Many of the RWCS Chapters now plan events at museums, restaurants, potteries, history center, river explorations, and factory tours to learn more about the history of this wonderful city by the Mississippi.

This year's Convention will continue the tradition of past gatherings with events running ahead of the actual Convention which officially starts on Thursday. There will be two stoneware auctions early in the week as well as "Wine-ing for Red Wing," the premier fund raising event for the Pottery Museum of Red Wing which will be held on Wednesday evening. Tickets for the event will be available in the Museum gift shop for early purchase again this year.

Preregistration has been moved back to the High School to consolidate registration in the cafeteria area to allow convention materials and badges to be picked up in a central location. Preregistration will be open on Wednesday from 11:00am till 4:00pm. Thursday officially kicks off the Convention at the Red Wing High School with the Welcome Session and Keynote address at 10:30am. Mr. Henry Hecker will give the keynote address on "Whitewater Potters from Wisconsin," and will continue the educational theme of pottery manufacturing in the Minnesota/Wisconsin area.

The RWCS Chapters were charged with coming up with ideas to celebrate the 40th Collectors Convention and many of them will have displays at the High School highlighting each Chapter's collecting history. The events will again be all on the ground floor of the High School with everything located by easy walking access from the cafeteria.

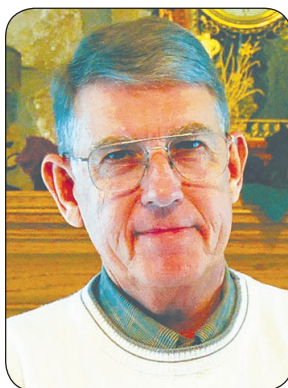
The big news this year is the vote for a new Chapter of the RWCS, the "Facebook Chapter!" Started as a pilot program off the existing RWCS Facebook page, the members have grown to over 1200 members! About half of the members are already RWCS members and we are hopeful that many of the non members will soon join. The official vote to establish the Facebook Chapter takes place Friday during the business meeting. The enthusiasm for collecting stoneware, dinnerware, and art pottery has literally exploded within this group. If anything can be said about the new Chapter, "they know how to have fun!" We are expecting a number of the members of the new Chapter to attend the Annual Convention for the first time this year and by doing so, will undoubtedly fall in love with the City of Red Wing.

The Friday evening event this year is "Crockfest" to be held at the Pottery Museum of Red Wing from 5:00-6:30. The gathering will be more of a social and include snacks and music from the "Sliced Bread Jug Band!"

The Saturday "Show and Sale" welcomes members at 9:00 am and free public admission at 10:30 am will be held again in the gym at the High School. After the success of opening up the event with larger booth spaces and the inclusion of an additional amount of quality antiques, we are expecting a good crowd searching for new treasures.

The City of Red Wing has worked closely with us to ensure your visit here will be memorable. The history of Red Wing is everywhere and we encourage you to roam the City, visit the museums, shop the many unique businesses, have a meal at one of the terrific restaurants, a beer at a local brewery, and of course there's always the bakery for a wonderful donut or cookie while you discover Red Wing. We hope you enjoy this year's convention and the beautiful City of Red Wing!

Larry Birks  
President-Red Wing Collectors Society



Larry Birks  
President

## Welcome from the Executive Director

**H**appy 40th Convention Red Wing Collectors Society Members.

The passion and commitment of the members has brought your Society to its 40th Convention. The Convention has made its home in Red Wing and has been held in several locations since the first convention at the Goodhue County Historical Society. The Convention continues to go strong because of the membership! Hats off to each member as you join your fellow collectors for your Ruby Red Wing Convention or #RWCSCON40!

The Convention's success is because of volunteers. This year, the RWCS used SignUpGenius.com to assist in the volunteer scheduling process. Many members embraced this new process to support the convention. I appreciate members welcoming this new tool. On behalf of the Board, RWCS members, and Convention attendees, thank you to each volunteer for giving your time, effort, and commitment to the RWCS Convention.

For 31 years, this Convention Supplement has been the members' resource to find out what's going on during the Convention. There are few scheduled events I would like to highlight: 1. Pre-Registration pick up today (Wednesday) is at Red Wing High School. 2. Crock Fest - Member Night is at the Pottery Museum of Red Wing Friday from 5:00 pm to 6:30pm. 3. The MidWinter Committee is holding a focus group on Friday at 1:00pm to get member input on that event. Everyone is encouraged to attend.

The RWCS appreciates the generous support of so many businesses and organizations in Red Wing: RWCS Foundation, Republican Eagle, Red Wing High School, Red Wing Visitor and Convention Bureau, Red Wing Area Chamber of Commerce, Red Wing Downtown Mainstreet, City of Red Wing, Pottery Museum of Red Wing, Goodhue County Historical Society, and Larry's Jugs. Thanks to each of you for joining the RWCS to mark this milestone Convention for our Society.

Thank you for coming to the #40 Convention. I look forward to seeing everyone at the High School.

Have a great "Ruby Red Wing" Convention!

Stacy L. Wegner  
Executive Director



Stacy Wegner  
Executive Director

## Welcome from the History Center

The Goodhue County History Center is located at 1166 Oak St., Red Wing.

**W**elcome back to Red Wing for the 40th! For 40 years, the Goodhue County Historical Society has welcomed the collectors to town! We are excited to see you all back here and hope that you enjoy your time at Convention. Don't forget to make time to visit the History Center to see some of the things we've been working on! For Love of the Game is a traveling exhibit from the Ramsey County Historical Society which traces the history of black baseball in Minnesota. It is located in our lobby area for easy access. As always, the History Center's staff will be providing educational seminars on Friday at the Convention. Casey Mathern will discuss the Jordan River, an underground waterway that was formerly above ground and cuts through downtown Red Wing. Learn the history of this mysterious waterway. I will provide a seminar as well on gravestone symbolism. If you always wondered what the symbols meant on old tombstones, this session is for you!

If you have not done so in past years or if this is your first convention, set aside some time to explore our great area! Our downtown area has great shopping opportunities and there is a plethora of parks to visit and take in what makes this area so special. Enjoy your time with friends and fellow collectors during this year's convention. We look forward to seeing you!

Dustin B. Heckman  
Executive Director, Goodhue County Historical Society



### RWCS Business Office:

**Executive Director**  
**STACY WEGNER**  
director@redwingcollectors.org

PO Box 50  
240 Harrison St. Unit 3  
Red Wing, MN 55066-0050  
Phone: 800-977-7927  
Cell Phone: 651-388-4004  
Fax: 651-388-4042  
Website: www.redwingcollectors.org

### Newsletter Editor

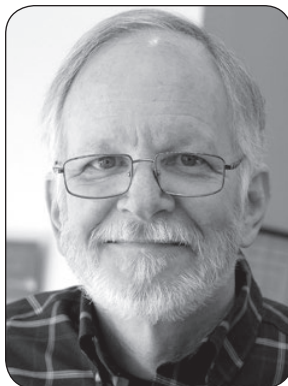
Rick Natynski  
PO Box 198  
Pewaukee, WI 53077  
Newsletter@redwingcollectors.org  
414-416-9464



## Welcome to Red Wing!

Welcome to the 40th Red Wing Collectors Society Convention in Red Wing, MN. Whether this is your first or your 40th time to Red Wing, we love having you here to enjoy our beautiful community. Shopping, dining, sightseeing, and an abundance of outdoor recreational opportunities await you. I know you will have a fabulous and fun time in Red Wing this year, I look forward to greeting everyone at the convention for 2016.

Dan Bender  
Red Wing Mayor



Dan Bender  
Red Wing Mayor

### ABOUT THE COVER:

Thank you to RWCS member Nancy Lambert for her design of the 40th logo this year!

## — Table of Contents —

Earthenware collector will present keynote at Convention.....	4-5
2016 Convention Schedule .....	6
There's no place like Red Wing .....	7
Society will celebrate '40' next year.....	8
Chapters, potters will celebrate '40' at Convention .....	9
Volunteers and Business Sponsors/Donors .....	10-11
Education & Hands On Experience.....	12-15
Crock Fest 2016 will be at Pottery Museum .....	16
"Introduction to Dinnerware" - Video Lending Library Project .....	16
New museum exhibit depicts General Store .....	17
Chapter & organization information.....	18
Construction routes .....	19
Show & Sale .....	20-21
RWCS Courtyard Café.....	22
Museum recreates historic women's luncheon .....	23

## Greetings from the RWCS Foundation

Greetings from the Red Wing Collectors Society Foundation

On behalf of the Foundation and Pottery Museum, we welcome you to Red Wing!

The Pottery Museum of Red Wing has had a year of growth and success. We are so fortunate to have paid off the building this past year thanks to all the support from individual donations, and the Red Wing Community.

The Grand Opening of our newest exhibit "The General Store" will be on the night of Crock Fest at the museum. Our exhibit will be based on the Mittelstaedt Store from Milbank, South Dakota. We are pleased that Robert Mittelstaedt will be presenting the history of the Mittelstaedt general store his grandfather Harold Mittelstaedt owned during the educational seminar.

We look forward to seeing all of you at Wine-ing for Red Wing event on Wednesday 6-9 p.m. You can purchase your ticket in advance at the Pottery Museum Gift Store.

Museum Hours are Tuesday thru Saturday 9-5 p.m. and Sundays 11-4 p.m. with expanded hours during your Convention. Follow us on Facebook.

Enjoy your visit to Red Wing and the Pottery Museum of Red Wing!

Dave Hallstrom  
President



Dave Hallstrom  
Red Wing Collectors  
Society Foundation /  
Pottery Museum  
of Red Wing

## RED WING COLLECTORS SOCIETY INC. COMMEMORATIVE INFORMATION

1977 Salt Glaze Crock	250	2006 Round-Up Teapot	5,191
1978 Common Jug	350	2007 5 gal. Birch Leaf Threshing Jug	4,500
1979 Butter Churn	400	2008 Century of Progress Transportation Mug	3,700
1980 Sponge ware Bowl	400	2009 Red Wing Advertising Bean Pot	3,606
1981 Brown-top Jug	750	2010 Stoneware Pig	3,421
1982 Cherry band Mug	697	2011 4 gal. salt glaze churn	3,300
1983 Stone Mason Fruit Jar	1,026	2012 Chromoline Vase	
1984 Salt-glazed Cooler	1,161	A 2,900	3,236 total
1985 Ice Water Cooler	1,750	B 300	
1986 Acid Proof Measure	1,982	C36	
1987 Red Wing Ashtray	2,328	2013 Stoneware Dog	
1988 Pompeii Plate	2,600	A 2,718	3,025 total
1989 Gray Line Pitcher	2,682	B 300	
1990 Fancy Jug	3,540	C37	
1991 Pantry Jar	3,551	2014 Success Filter	
1992 North Star Jug	4,260	A 2241	2491 total
1993 Chicken Fountain	4,819	B 212	
1994 20-lb Crock	5,660	C 38	
1995 Giraffe Planter	6,186	2015 Canteens	
1996 Cookie Jar	7,175	A 1943	2180 total
1997 20# Salt Glaze Crock	7,508	B 198	
1998 Blue Iris Pitcher	7,564	C 39	
1999 5 Gal. Koverwate	7,444		
2000 Hamm's Pitcher	7,190		
2001 Sponge Bowl	6,901		
2002 5 gal. Ball Lock Packing Jar	6,888		
2003 Leaping Pegasus figurine planter	6,089		
2004 Brushware Vase	5,790		
2005 Red Wing Self Draining Jar	5,323		



# Earthenware collector will present keynote at Convention

By Ruth Nerhaugen  
Contributor

Just as plasticware replaced stoneware as mom's favorite food storage container, stoneware replaced an earlier product that was not as strong and durable — earthenware.

The rise and fall of Wisconsin's earthenware industry will be outlined by Henry Hecker when he gives the **RWCS Convention's keynote address at 10:30 a.m. Thursday, July 7, at Red Wing High School.**

Hecker, who lives in Mukwonago, Wis., near Milwaukee, has been collecting Wisconsin earthenware, stoneware and bottles since the early 1970s.

His collection includes Red Wing advertising pieces made for Wisconsin businesses, Hecker said — mostly butter crocks and whiskey jugs. His familiarity with Red Wing dates from his childhood years on a farm, where his parents had old Red Wing advertising jugs and butter crocks.

But his presentation at the Convention will focus on Wisconsin earthenware and the four potters who operated in Whitewater, Wis., from the late 1840s to about 1870.

The difference between earthenware and stoneware stems from the type of clay used and the firing temperature.

"Think of a terra cotta flower pot," Hecker said.

During the mid-19th century potters there were quite a few potters in central and southern Wisconsin who used clay from local river and lake beds to create products families needed.

They made pipkins (similar to bean pots), crocks and churns, jars, chicken fountains — even bird houses and string holders, Hecker said. The items were sold locally, and "virtually none" of these pieces was stamped or marked by the maker.

Red Wing and other stoneware manufacturers were the "villains" who wiped out the earthenware industry, Hecker said. Stoneware is more durable, and lends itself to mass production. By 1890, the earthenware potters were gone, or were reduced to making little besides flower pots.

Whitewater had at least four earthenware potters; the principal ones were Milz & Ohnhaus and Cole & Hunter.

Hecker and friend Peter Maas from Neshota, Wis., have been researching them and trying to match up shards with surviving pieces from the different potteries. They'd like to set up a Website.

Their efforts are complicated by the fact that workers probably moved around, so their techniques and styles may be identified with more than one location. It helps if a piece has been passed down in a family, or has a distinctive design or marking.

Like Red Wing Pottery dump-diggers, these collectors also dig for shards. Hecker said a sidewalk installation project in Whitewater in 2015 encountered a shard dump. They came away with hundreds of pieces.

Another boost to their research was acquiring a sizeable collection from a longtime earthenware collector.

"It's a treasure when you can find a piece nowadays," he said, "because most of it was broken." Even sites to excavate for shards are being bulldozed or otherwise destroyed.

Hecker recently retired as a marketing executive, so he has more time now to pursue his interest in earthenware.

And while many retirees are downsizing, he and his wife Diane — who collects porcelain and other antiques — are putting an addition on their house to store their collections. Their sons, John and Erik, find it all interesting, but are not collectors.

Hecker joined the Red Wing Collectors Society, partly because many members have broad interests, and attended the Mid-Winter, but this is his first RWCS Convention in Red Wing.

Red Wing High School again is headquarters for the 40th annual RWCS Convention, which runs July 7-9. In honor of that anniversary, the theme is "Ruby Red Wing."



Collector Henry Hecker will give the keynote address Friday on earthenware made in Whitewater, Wis., in the mid-19th century. He also collects bottles and stoneware, including Red Wing pieces with Wisconsin advertising. — contributed photos



Hanging flower pots



Foot warmer

CONTINUED ON PAGE 5

CONTINUED FROM PAGE 4



2-gallon Whitewater jug



String holder



6-gallon cream pot



1/2 gallon decorated jar



Pitkin cooking vessel



2-gallon crock with matching shards from Cole &amp; Hunter site found by Peter Maas and Henry Hecker

# Pottery Pond cleanup set for fall

By Ruth Nerhaugen  
Contributor

Local volunteers will clean up Pottery Pond this fall in conjunction with the cleanup of the Cannon River. The activity also is in celebration of Water/Ways, a Smithsonian traveling exhibit coming to Red Wing Oct. 1-Nov. 13.

Cleanup day is Sept. 17. A team led by James Clinton of the Goodhue County Historical Society will work at Pottery Pond from noon to 3 p.m.

Another group led by Jason Jech of the Red Wing Environmental Learning Center will clean up a section of the Cannon River at Red Wing.

The September date was chosen because that's the day the Cannon River

Watershed Partnership cleans up the Cannon River, said Clinton, the museum's education and outreach coordinator.

"We're doing our own in conjunction" with those other activities, he explained.

Following the cleanup volunteers will gather in Bay Point Park from 3 p.m. to 6 p.m. for live music by acoustic musicians and food.

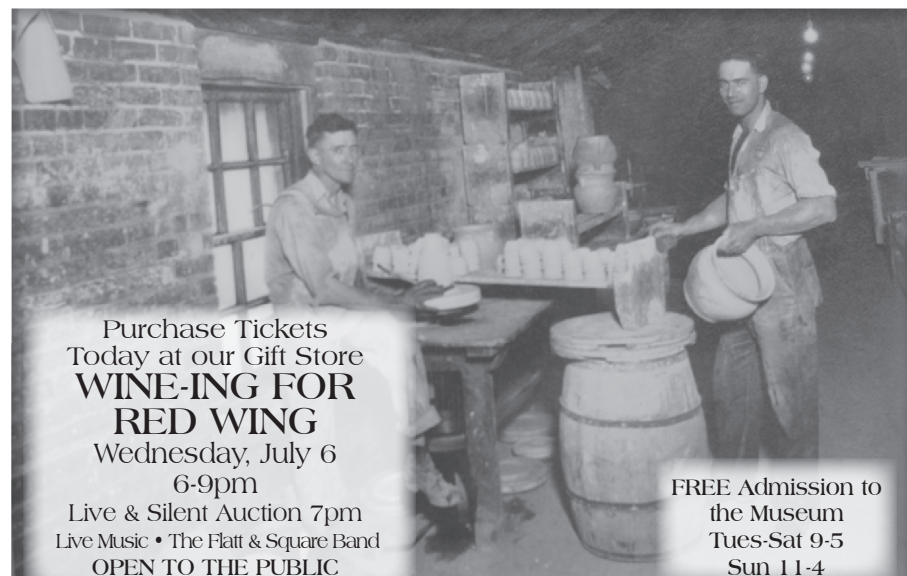
Water/Ways will be at the Goodhue County History Center from Oct. 1 to Nov. 13. It's an exhibit and "community engagement initiative" of the Smithsonian's Museum on Main Street program.

Anyone who wants to help clean Pottery Pond should contact Clinton at the history center, 651-388-6024.

## POTTERY MUSEUM OF RED WING

240 Harrison St., Red Wing • 651-327-2220

Learn the history of the Red Wing Clay Industries  
Over 6,000 Items on Display



Purchase Tickets  
Today at our Gift Store  
**WINE-ING FOR  
RED WING**  
Wednesday, July 6  
6-9pm

Live & Silent Auction 7pm  
Live Music • The Flatt & Square Band  
OPEN TO THE PUBLIC

FREE Admission to  
the Museum  
Tues-Sat 9-5  
Sun 11-4

[www.potterymuseumredwing.org](http://www.potterymuseumredwing.org)



# 2016 Convention Schedule • Red Wing High School, Red Wing, MN

TIME	ACTIVITY	LOCATION
<b>Wednesday, July 6</b>		
7:00 – 12:00	RWCS Board of Directors Meeting	Teachers' Lounge Red Wing High School
11:00 – 4:00	Pre-registered attendees badge pick up	Cafeteria Red Wing High School
12:00 – 3:00	RWCS Auction Check-In, Catalogs for Sale	Gymnasium
12:00 – 3:00	Display: set up by appointment	J 100 Pod
6:00 – 9:00pm	RWCS Foundation "WINE-ing for Red Wing"	Pottery Museum of Red Wing 240 Harrison St
<b>Thursday, July 7</b>		
8:00 – 4:00	Courtyard Café Open	Courtyard Café
8:00 – 1:00	Set up the Display and Rare Items	J 100 Pod
8:00 – 5:30	<b>40 Project - Displays by Chapters Chapter Challenge Piece Silent Auction</b> <i>(bidding closes at 3pm Friday)</i>	Courtyard Café
8:00 – 5:30	Convention Registration Opens	Courtyard Café
8:00 – 10:00	<b>Chapter Presidents Meeting</b>	K 100
9:00 – 3:00	<b>Hands on Session - Richard Spiller Pottery Demonstration</b>	Courtyard Café
8:00 – 10:00	<b>Commemorative Distribution &amp; Silent Auctions Open</b> <i>(silent auctions close 10:30 am Saturday)</i>	C 102
8:00 – 10:00	Kids View Donation Piece(s) Check In	Art Room
8:00 – 11:00	Auction Check-In	Gymnasium
8:00 – ???	Distribution of Bid Numbers; Auction Catalog for Sale	Gymnasium
9:00 – 3:30	Sale of Educational Material	Courtyard Café
9:00 – 10:00	Orientation for Convention First Timers	Choir Room C-100
10:30 – 12:00	<b>Welcome Session</b> <b>Keynote Address: Whitewater Potters from Wisconsin Presenter: Henry Hecker</b>	Auditorium
10:45 – 12:30 (11:00 start)	<b>Youth Programs: SWEET 16</b> Young Collectors Program Kids View	Art Room
11:00 – 4:00	<b>Lunch open in Cafeteria</b>	Courtyard Café
12:15 – 4:15	Auction Preview	Gymnasium
1:00 – 2:00	<b>Chapter Meetings</b> <i>Iowa Chapter H 102, Siouxland Chapter H 103, Southwest &amp; Sunshine State Red Wingers H 104, Lewis &amp; Clark Chapter H 105 Trails West Chapter H 106 Wisconsin Chapter H 109 Gopher Chapter H 110</i>	H100 Rooms
1:00 – 4:00	<b>Commemorative Distribution</b> <i>(silent auctions close 10:30 am Saturday)</i>	C 102
2:30 – 3:30	<b>Shared Interest Groups</b> <i>Bean Pots &amp; Red Wing Dinnerware</i>	H 100 Rooms
4:00 – 8:00	Winger Volleyball Concessions	Gymnasium
4:30 – ????	<b>Official RWCS Auction</b> <i>Special Commemorative Drawing!</i>	Gymnasium
3:00 – 7:00	Displays open for viewing	J 100 Pod

TIME	ACTIVITY	LOCATION
<b>Friday, July 8</b>		
8:00 – 1:30	Courtyard Café Open	Courtyard Café
8:00 – 3:00	<b>40 Project - Displays by Chapters Chapter Challenge Piece Silent Auction</b> <i>(Bidding Closes at 3pm)</i>	Courtyard Café
9:00 – 10:50	Commemorative Distribution & Silent Auction <i>(silent auctions close 10:30 am Saturday)</i>	<b>C 102 – NEW LOCATION</b> Hallway to Gymnasium
8:30 – 3:00	Displays Open	J 100 Pod
9:00 – 3:00	Sale of Educational Materials	Courtyard Café
9:00 – 3:00	Richard Spiller Pottery Demonstration	Courtyard Café
<b>Hands on Session. Make your own 40 or Wing. Ornaments available for purchase!</b>		
9:00 – 10:00	Orientation for Convention First Timers	C 100 Choir Room
10:00 – 10:50	Adult Educational Seminars	H 100 Rooms (see schedule)
9:45 – 10:00	Youth Program Registration & Introduction	Art Room
10:00 – 2:00	<b>Youth Programs (Lunch will be provided)</b> Kids View Seminars & Young Collectors Program	Art Room
11:00 – 11:50	Adult Educational Seminars	H 100 Rooms (see schedule)
11:00 – 1:30	<b>Lunch available Courtyard Café</b>	Courtyard Café
1:00 - 1:50	Adult Educational Seminars	H 100 Rooms (see schedule)
2:00 – 2:50	Adult Educational Seminars	H 100 Rooms (see schedule)
1:30 – 3:00	Commemorative Distribution and Silent Auctions <i>(silent auctions close 10:30 am Saturday)</i>	C 102
2:00 – 3:00	<b>HAUL IN Show &amp; Sale Items</b>	Gymnasium
3:00	<b>Chapter Challenge Silent Auction Closes</b> <i>40 project display removal</i>	Courtyard Café
3:15 – 5:30	<b>Annual Business Meeting</b> Special Commemorative Drawing! Election Results, Chapter Commemorative Presentation, Vote to add Facebook Chapter, Display Winners announced.	Auditorium
5:00 – 6:30	<b>CROCK FEST!!!!</b> Member Night at the Pottery Museum of Red Wing! <b>Sliced Bread Jug Band, Appetizers, and Drinks</b>	Pottery Museum of Red Wing
<b>Saturday, July 9</b>		
8:00 – 9:00	<b>HAUL IN Show and Sale</b>	Gymnasium
8:00 – 1:30	<b>Winger Volleyball Concessions</b>	Gymnasium
8:00 – 10:30	<b>Registration Opens</b>	Courtyard Café
8:00 – 10:30	Commemorative Distribution -Silent Auction Close at 10:30	C 102
9:30 – 11:00	Auction Prices-Realized Catalogs for Sale	Courtyard Café/Gym
8:00 – 12:00	Display Open to the Public	J 100 Pod
9:00 – 10:30	<b>Show &amp; Sale Open to Registered Members ONLY</b>	Gymnasium
10:30 – 1:30	<b>Show &amp; Sale Open to the Public</b>	Gymnasium
9:30 – 1:00	Commemorative Lottery (while supplies last)	C 102
1:30 – 3:00	Show and Sale Removal	Gymnasium
12:00 – 3:00	Display Removal	J 100 Pod
5:30 p.m.	Social	
6:30 pm Dinner	<b>Banquet Celebration</b>	<b>Mount Frontenac Golf Course</b> 32420 Ski Rd, Frontenac, MN

# 'There's no place like Red Wing'

## Pottery supporters pay off museum mortgage early

By Ruth Nerhaugen  
Contributor

A mortgage-burning ceremony will kick off the Red Wing Pottery Foundation's annual "Wine-ing for Red Wing" fundraiser on July 6, the eve of the Red Wing Collectors Society Convention.

In just one year, the foundation raised over \$200,000 — enough to pay off the museum debt a year early and save nearly \$10,000 in interest charges. The final payment of \$232,000 was made on Jan. 14 of this year.

The ceremony and fundraiser will get under way at 6 p.m. on Wednesday of Convention Week at the Pottery Museum of Red Wing.

"The Wizard of Oz" is theme for the event, because once again members will gather here to affirm their belief that "There's no place like Red Wing," according to event chairman Wendy Callicoat.

The festive tone for the evening will be evident from the start.

Without giving away too many surprises, Callicoat said there will be people dressed as familiar characters and Emerald City-inspired sights to enjoy.

The mortgage-burning is possible because many people stepped up to make it happen, Foundation Board Chairman Dave Hallstrom said, citing individuals, chapters, local foundations and other supporters.

"We're extremely excited and proud," he added. "The whole thing has been a miracle. ... The mortgage was the No. 1 priority," but now that the balance of the contract for deed has been paid off, "we can focus more on education, programs" and promoting the museum.

During the "Wine-ing for Red Wing" event last year, the foundation launched the Capital 300 Club, according to Nancy Lambert, also a committee member.

After watching a video about a group of people who accomplished a seemingly impossible task by working in collaboration, Lambert said, "I came up with the idea that if 300 people could donate \$1,000, working together we could pay off the building early and save money on the interest payments.

"The program was very successful," she added. "More than 100 RWCS members, Red Wing area residents and RWCS chapters joined the effort."

Adding to the total, Lambert said, were donations received during Give to the Max Day and grants from the Red Wing Shoe Foundation and the Red Wing Area Fund.

Immediately after the mortgage is burned, two one-of-a-kind stoneware jugs that were made to commemorate the event will be auctioned. They are the work of W.A. Painter of Kansas City.

Callicoat invited collectors and the public to "Follow the Yellow Brick Road" to the museum to watch the mortgage being burned — then stay for "Wine-ing for Red Wing" in the museum.

Admission to "Wine-ing" is \$20. That fee will cover food catered by the St. James Hotel and two drinks; beverages will be provided by West End Liquor. In addition, each participant will get a commemorative beer or wine glass. Tickets are available at the museum in advance or that night.

Entertainment will feature Flatt and Square, a Red Wing band that plays a mix of folk, celtic and bluegrass music and fiddle tunes. Most of the members perform on instruments they built themselves.

A silent auction will be ongoing during the evening, plus there will be an oral auction conducted by Dick Houghton.

"You will have a chance to bid on a piece of Red Wing Pottery history but also local Red Wing, Minnesota history," Callicoat said.

She explained that in 1962 Red Wing Pottery produced 15 custom-built light fixtures for Nybo's Café and Bowling in Red Wing. "These fixtures were made exclusively for Nybo's and no others were ever produced," she said.

Special benefactors have donated one of the rare fixtures from their collection to help raise funds for the museum.

It will be a highlight of the oral auction, but not the only rare piece.

There also will be a Charles Murphy bowl, a bronze/tan umbrella stand, a Lutana butter crock and a plate hand-painted by Doris Gardas depicting a view of the Eisenhower Bridge from the top of Barn Bluff. Gardas painted dinnerware at the Potteries in the 1950s.

The silent auction also will have a fun selection of items, Callicoat said, including Red Wing pieces, art work and items donated by local merchants.

About 280 people attended in 2015. "Last year was over the top" when it came to



ABOVE: A rare bowl designed by Charles Murphy will be auctioned to raise funds for the Pottery Museum and educational activities for children. RIGHT: One of the 15 custom-built light fixtures made by Red Wing Pottery exclusively for Nybo's Café and Bowling will be auctioned at "Wine-ing for Red Wing" on July 6. — contributed photos



raising funds, she noted. Organizers hope to do as well this year, which is the fifth annual "Wine-ing for Red Wing."

Committee members in addition to Callicoat, who is from Seneca, Mo., are Lambert, from Bella Vista, Ark.; Robin Wipperling and Linda Wipperling, Red Wing; Barb Brown, Iowa; and Ann Tucker, Sycamore, Ill.

Proceeds will go toward operating expenses and educational programming, Callicoat said — especially activities to educate young people about the clay industry.

For more information contact the museum at 651-327-2220.

**GOODHUE COUNTY HISTORICAL SOCIETY**  
EST. 1869

*Minnesota's First County Historical Society*

Hours:  
Tue-Sat 9AM-5PM  
Sundays (April-Nov) 1-5PM

1166 Oak Street | Red Wing, MN  
www.GoodhueCountyHistory.org  
**(651) 388-6024**

# Society will celebrate '40' next year

By Ruth Nerhaugen  
Contributor

Red Wing Collectors Society members are celebrating their 40th year of holding conventions in Red Wing, but the celebration will not end when the 2016 Convention comes to a close.

Since the society's 40th anniversary is ac-

tually in 2017, festivities will continue next year.

The "Ruby Red Wing" theme introduced this year will continue, according to Nancy Lambert, board member and historian for the group.

"It's hard to believe that it has been 40 years since a group of collectors gathered on the lawn of the Goodhue County Museum

and decided to form the group and gather every year to share information about Red Wing products and buy, sell and trade the collectible ware," Lambert said.

"Few organizations have experienced such longevity, which is a testament to the passion of the RWCS members," she added.

"The stoneware, pottery and dinnerware collecting is still the common bond, but the friendships formed over the years is truly something to celebrate, and keeps members returning year after year."

At Convention 2017, she said, "We plan to continue some of the traditions that began in 1987 on the 10th anniversary and the decades that followed."

Members will receive a special collector pin marking the anniversary, and a custom collectible art tile and other memorabilia will be available to purchase.

"We also plan to produce a special DVD which will have historical glimpses of the



past 40 years along with videos of members," Lambert said.

The video will be available at next year's convention. Details about the cost and pre-ordering will be released soon.

At Convention 17, the anniversary party will include the Friday evening Crockfest, which will be open to Red Wing area residents as well as members attending convention. Other special activities also are being planned.

"Hope that you will be 'with' the 40th in 2017," Lambert said.

## JULY 6-8, 2017

Welcome  
Red Wing  
Pottery  
Collectors!



Take out  
Available

The oldest  
restaurant in  
Red Wing

Specializing in home style cooking

Breakfast Served All Day

www.bevscafe.com | 221 Bush Street • Red Wing | 651-388-5227

Hours: Mon.-Thur. 5am-3pm, Fri. 5am-8pm, Sat. 6am-2pm, Sun. 8am-1pm



Photo courtesy of Red Wing Shoe Co. Archives.

Since 1905, the Red Wing Shoe Company has been crafting purpose-built footwear. Generations of employees have contributed to our quality and our success. Together, our company, our employees, their families and our community have grown and prospered. We are proud to call Red Wing home.



redwingshoes.com



## GREAT CHICKEN

- BURGERS & FRIES
- SANDWICHES
- WRAPS
- SALAD BAR
- FISH TACOS
- CONES
- SHAKES • MALTS



## BREAKFAST SPECIAL

### \$5.50

2 eggs, 2 bacon strips and  
2 pancakes

**Breakfast Burritos**  
**Omelets**  
**French Toast**  
**Biscuits and Gravy**  
**Pancakes**  
**Much more!**

A Proud Sponsor of the Potter's Convention

## Randy's

Hwy. 61, Downtown Red Wing • 7AM-9PM Mon.-Sun.  
See full menu online at [randysinredwing.com](http://randysinredwing.com)



# Chapters, potters will celebrate '40' at Convention

By Ruth Nerhaugen  
Contributor

In celebration of the 40th annual Red Wing Collectors Society Convention, the Chapters have all been invited to create something special that includes the number or represents four decades of gathering in Red Wing.

The convention, which has "Ruby Red Wing" as its theme, runs July 7-9 at Red Wing High School.

Also fired up for "Celebrate 40" is the convention's resident potter, Richard Spiller. He's making special clay items and will offer a class so everyone can create their own pieces during the convention.

Chapters were asked to design a 40 that incorporates phrases or words, photos, shards or memorabilia.

It can be a flat 40 made of any material, or a three-dimensional 40 made of metal, wood or something else, according to Executive Director Stacy Wegner.

Chapters could go another route, she said, and put together a display of 40 items, such as photos, messages or a countdown of memories.

The "Celebrate 40" project — which will replace the Chapter basket challenge — can be a work in progress, because the plan is to display them both this year and in 2017 in the cafeteria. The society officially turns 40 next year.

Chapters can take their 40s home after convention and add new things.

"There are 16 chapters" around the country, Wegner said; several expressed interest in the project right from the start. However, she added, "Many are keeping it secret until the convention."

Based on the questions people asked, "The creativity is brewing," Wegner said. "One of the chapters asked for an 8-foot table. I can only imagine what they're going to put on it."

Young people attending the convention also will "Celebrate 40." On Friday, Red Wing's ArtReach organization will work with the Kids View participants on a large paper mache 40.

Young Collectors will have an opportunity to work with potter Richard Spiller to make appropriate pieces out of clay.

A rural Wisconsin resident, Spiller has been a practicing potter and ceramic artist for nearly 50 years. He has offered demonstrations, classes and other educational opportunities at the convention since 2012.

Spiller has created a limited number of pieces shaped as No. 40 and a wing, plus some wing-shaped clay earrings and tie tacks.

The pieces, which he has fired red, can be used in a variety of ways, Wegner pointed out. Larger ones can be door decorations or trivets, while smaller ones make nice ornaments. He is expected to make more for next year, too.

Convention-goers interested in making their own clay 40s and wings can sign up for Spiller's hands-on education classes Thursday and Friday at the high school.

Participants will decorate their pieces with engobe glaze and apply the scraffito technique to add words or designs. Pieces will



Richard Spiller is creating clay items shaped like the number 40 and wings to celebrate the RWCS's 40th annual convention July 7-9. Attendees will have a chance to make their own. — Ruth Nerhaugen photo

be fired after the convention and shipped. Cost is \$20 for each piece, or both for \$35 plus shipping.

For more information on "Celebrate

40" contact the RWCS business office at 800-977-7927 or go on the Website [www.redwingcollectors.org](http://www.redwingcollectors.org) and click on the convention page.



## Whole Foods for a Healthy Lifestyle

- Organic •Bulk •Dry Goods
- Local Meats •Supplements
- Health & Beauty •Essential Oils

Fresh Organic Smoothies

OPEN MON.-SAT.

318 Bush Street, Red Wing, MN

651-388-0333

[www.simpleabundanceredwing.com](http://www.simpleabundanceredwing.com)



Locally Owned for 16 Years



## The Salvation Army

501 Plum St., Red Wing • 651-388-9270

# 10% OFF

With this coupon

Clothing • Jewelry • Books • Dishes • Collectibles  
Furniture • Linens Bedding • Holiday Merchandise  
Reconditioned Beds, New Frames  
Merchandise Changes Daily

Drop off  
donations  
East side of  
building

Pickups on Wednesdays & Saturdays  
Store Hours: Mon.-Fri. 9-6, Sat. 9-5  
[www.thesalarmy.org](http://www.thesalarmy.org)

# Thank you to our many RWCS volunteers who make the Convention successful every year:



First Name	City, State	# of years	First Name	City, State	# of years	First Name	City, State	# of years
<b>AUCTION</b>			Dennis Nygaard	Hastings, MN	30	<b>OFFICE SUPPORT</b>		
Nancy Houghton	Red Wing, MN	33	Larry Roschen	Coon Rapids, MN	18	Paul Wichert	Waukesha, WI	23
Richard Houghton	Red Wing, MN	33	Terry Moe	Cedar Rapids, IA	17	Luke Wegner	Red Wing, MN	11
Todd Houghton	Red Wing, MN	29	Laura Beall	Scotland, SD	15	Rick Natynski	Pewaukee, WI	11
Brian Sander	Red Wing, MN	8	<b>Glenn Beall</b>	<b>Scotland, SD</b>	<b>15</b>	Dan Barry	Red Wing, MN	9
Larry Seehusen	Pomeroy, IA	17	Catherine Beall	Logan, IA	7	Ruth Nerhaugen	Red Wing, MN	9
Mike Robinson	Stockton, CA	16	Steve Poeschl	Alden, MN	7	Debra Gullickson	Red Wing, MN	8
Bonnie Myers	Winona, MN	14	Paul Boudin	Minneapolis, MN	6	Laura Beall	Scotland, SD	8
Nick Marson	Winona, MN	14	Connie Mathison	Minneapolis, MN	5	Mike Becker	Hager City, WI	8
Luke Wegner	Red Wing, MN	11	Ray Reiss	Chicago, IL	4	Heidi Hahlen	Middleton, WI	7
Bruce Selfridge	Healdsburg, CA	11	Dustin Heckman	Red Wing, MN	2	Cindy Becker	Hager City, WI	5
Jacob Becker	Hager City, WI	8	Scott Kolby	Red Wing, MN	1	Mike Becker	Hager City, WI	5
Mike Becker	Hager City, WI	8	Mark Youngblood	White Bear Lake, MN	1	Judy Richardson	Eau Claire, WI	3
Syl Caspersen	Sioux Falls, SD	8	Casey Mathern	Red Wing, MN	1	Lydia Fekula	Delafield, WI	1
Steve Poeschal	Alden, MN	7	Henry Hecker	Mukwonago, WI	1	<b>CONVENTION SUPPORT</b>		
Bob Beres	Merrimac, WI	7	<b>YOUTH PROGRAM</b>			Ron Gernentz	Red Wing, MN	18
<b>Scott Hardman</b>	<b>Ripon, CA</b>	<b>7</b>	Sandy Short	Marshalltown, IA	37	Jeff Huppert	Red Wing, MN	18
Johnathan Braasch	Rochester, MN	6	Beth Zamzow	Superior, WI	16	Heidi Hahlen	Middleton, WI	7
Larry Birks	Harrison, MN	5	Mike Robinson	Stockton, CA	15	Monica Natynski	Pewaukee, WI	3
Genise Hardman	Ripon, CA	5	Russa Robinson	Stockton, CA	15	Larry Birks	Harrisonville, MO	5
Thomas Sellner	Plattsmouth, NE	4	Heather Tanaka	Stockton, CA	15	Linda Birks	Harrisonville, MO	5
Shirley Seehusen	Pomeroy, IA	3	Michelle Heiberger	Dell Rapids, SD	12	Vivian Perry	Lee's Summit, MO	4
Angela Sheveland	Red Wing, MN	1	Leslie Zamzow	Superior, WI	10	Bob Perry	Lee's Summit, MO	4
Douglas Urman	Tucson, AZ	1	Frank Sheldon	Stockton, CA	4	Judy Richardson	River Falls, WI	4
Stuart Weinbrenner	Cedar Rapids, IA	1	Monica Natynski	Pewaukee, WI	3	Sue Chapman	Victoria, MN	3
Chris Tincher	Wichita, KS	1	Sam Edge	Stewartville, WI	3	Wayne Chapman	Victoria, MN	3
<b>COMMEMORATIVE</b>			Allison Mullen	Perry, PA	3	Jean Miller	Red Wing, MN	3
Gary Grabau	Lynd, MN	29	Anna Osterndorf	Red Wing, MN	2	Karen Midgarden	Hoople, ND	2
Paul Wichert	Waukesha, WI	23	<b>Linda Wipperling</b>	<b>Red Wing, MN</b>	<b>2</b>	Gina Alpers	Red Wing, MN	1
Darrel Morrisey	Moose Lake, MN	28	James Clinton	Red Wing, MN	2	Judy Schwartz	Minneapolis, MN	1
Joanne Morrisey	Moose Lake, MN	28	Brenda Rader	Kansas City, MO	1	<b>WEBSITE EXPERTS</b>		
Greta Hoerman	Wauconda, IL	28	Angela Hemberger	St. Paul, MN	1	Al Kohlman	Madison, WI	17
Larry Roschen	Coon Rapids MN	26	Yoshi Hoffman	Wausau, WI	1	Larry Roschen	Coon Rapids, MN	17
Kathy Roschen	Coon Rapids MN	26	<i>* All the parents, grandparents, and guardians that stay with their children.</i>			Terry Moe	Cedar Rapids, IA	17
Linda Krueger	Glencoe, MN	24	<b>PRE-REGISTRATION</b>			Jeff Tagliapietra	Madison, WI	17
Deanna Juergens	Bloomington, MN	24	Chuck Hanson	Rochester, MN	29	<b>MEMBERSHIP COMMITTEE</b>		
Jay Juergens	Bloomington, MN	24	Donna Hanson	Rochester, MN	29	Paul Wichert	Waukesha, WI	23
Darlene Tomhave	Red Wing, MN	24	<b>Jim Key</b>	<b>Red Wing, MN</b>	<b>23</b>	Diana Bailey	Cedarburg, WI	14
Jack Tomhave	Red Wing, MN	24	<b>Karen Key</b>	<b>Red Wing, MN</b>	<b>23</b>	Bob Morawski	New Berlin, WI	12
Mary Plant	Fridley, MN	24	Kim Key	Red Wing, MN	17	Greta Hoerman	Wauconda, IL	3
Frank Plant	Fridley, MN	24	Dennis Stoeckman	Olivia, MN	15	Laura Beall	Logan, IA	3
Jane Wolfram	Rushford, MN	24	Karen Stoeckman	Olivia, MN	15	Russa Robinson	Stockton, CA	3
Mary Wolfram	Red Wing, MN	23	Joyce Sutherland	Red Wing, MN	14	Catherine Beall	Logan, IA	3
Gordon Trelstad	Red Wing, MN	22	Jim Sutherland	Red Wing, MN	14	<b>Chris Tincher</b>	<b>Wichita, KS</b>	<b>1</b>
Brenda Ehlers	Red Wing, MN	20	John O'Sullivan	Superior, WI	14	Yoshi Hoffman	Wausau, WI	1
Holly Tremble	Hudson, WI	18	Crystal O'Sullivan	Superior, WI	14	<b>TECHNOLOGY COMMITTEE</b>		
Bonnie Myers	Winona, MN	14	Ralph Ryan	Red Wing, MN	10	Paul Wichert	Waukesha, WI	23
Nick Marson	Winona, MN	14	Ave Zibble	Red Wing, MN	9	Catherine Beall	Logan, IA	6
Diana Bailey	Cedarburg, WI	14	Bob Zibble	Red Wing, MN	6	Mark Gambucci	Farmington, MN	5
Ginger Garry	Woodbury, MN	13	Margaret Eckdahl	Red Wing, MN	5	Jerry Gapsinski	Farmington, MN	5
Syl Caspersen	Sioux Falls, SD	12	<b>REGISTRATION</b>			TJ McHose	San Francisco, CA	5
<b>Bob Morawski</b>	<b>New Berlin, WI</b>	<b>12</b>	Sue Ingwersen	Indianapolis, IN	15	Jonathan Braasch	Rochester, MN	2
Tom Scherer	Schroeder, MN	9	Leona Scherer	Schroeder, MN	10	<b>Mike Stenstrom</b>	<b>Weston, WI</b>	<b>2</b>
Dick Werning	Waukesha, WI	7	Tom Scherer	Schroeder, MN	10	<b>CROCK FEST</b>		
Wayne Johnson	Eden Prairie, MN	6	Ralph Ryan	Red Wing, MN	9	<b>Todd Avery</b>	<b>Red Wing, MN</b>	<b>9</b>
Steve Wichert	Oshkosh, WI	4	<b>Heidi Hahlen</b>	<b>Middleton, WI</b>	<b>7</b>	Nora Avery	Red Wing, MN	9
Nikki Prouty	Oshkosh, WI	4	Rick Baker	Middleton, WI	6	Yoshi Hoffman	Wausau, WI	6
John Weber	Olathe, KS	4	Judy Richardson	Eau Claire, WI	4	Monica Natynski	Pewaukee, WI	3
Sherry Weber	Olathe, KS	4	Darrell Schweppe	Lincoln, NE	3	<b>MIDWINTER COMMITTEE</b>		
Paige Grabau	Lynd, MN	5	Angela Shefeland	Red Wing MN	1	Paul Wichert	Waukesha, WI	23
Beverly Johnson	New Ulm MN	3	Yoshi Hoffman	Wausau, WI	1	Diana Bailey	Cedarburg, WI	14
Dennis Johnson	New Ulm MN	3	<b>SHOW &amp; SALE</b>			Bob Morawski	New Berlin, WI	12
Mike Becker	Hager City, WI	8	Dave Kuffel	Libertyville, IL	26	Rick Natynski	Pewaukee, WI	11
Alison Mullen	Derry, PA	3	Pete May	Greenville, TN	18	Nancy Julius	Woodstock, IL	1
Gilda Becker	Sheboygan, WI	3	Cindy May	Greenville, TN	18	<b>CONVENTION COMMITTEE</b>		
<b>DISPLAY</b>			Tim Lockard	Russell, IA	17	Richard Houghton	Red Wing, MN	33
Glenn Beall	Scotland, SD	15	Roxie Lockard	Russell, IA	17	<b>Todd Avery</b>	<b>Red Wing, MN</b>	<b>9</b>
<b>Laura Beall</b>	<b>Scotland, SD</b>	<b>15</b>	Mark Gambucci	Farmington, MN	5	Ruth Nerhaugen	Red Wing, MN	9
Catherine Beall	Scotland, SD	13	<b>Dale Erickson</b>	<b>Northfield, MN</b>	<b>5</b>	Mike Becker	Hager City, WI	8
Marylynn Headrick	Flandreau, SD	4	Monna Erickson	Northfield, MN	5	Wayne Miller	Red Wing, MN	8
Jo Landis	Garretson, SD	4	Robin Gambucci	Farmington, MN	5	Todd Beyer	Pine Island, MN	2
Monica Natynski	Pewaukee, WI	3	Merv Peck	Fremont, NE	2	Jessica Edwards	Cannon Falls, MN	2
<b>EDUCATION</b>			Gail Peck	Fremont, NE	2			
Phyllis Showers	Welch, MN	39						
Steve Showers	Welch, MN	39						
Larry Peterson	Farmington, MN	39						

All the members who volunteer all year long, and help onsite at Convention & MidWinter. The support is appreciated.

# Thank you to Red Wing Area businesses for your sponsorships and donations

## Platinum Sponsors



**larry's jugs**  
ANTIQUES



## Crock Hunt Sponsors

Randy's Restaurant  
709 Main St.  
St. James Hotel  
406 Main St.  
Red Wing Area  
Chamber of Commerce  
439 Main St.  
Red Wing  
Confectionery  
323 Main St.  
DeLeon Jewelers  
409 Main St.

Associated Bank  
222 Bush St. or  
403 West 4th St.  
Josephson's Clothing  
Store  
215 Bush St.  
Liberty's Restaurant &  
Lounge  
303 West 3rd St.  
Marie's Underground  
Grill & Tap House  
217 Plum St.

Dressen's Saloon  
Haycreek Valley  
Campground  
31655 Hwy. 58  
Red Wing Brewery  
1411 Old West Main St.  
Goodhue County  
Historical Society  
1166 Oak St.  
Perkin's Restaurant  
812 Withers Harbor Dr.

## Convention Sponsors

**Gold Sponsors**  
AmericInn  
Nichols Inn  
Red Wing Shoes  
Rodeway Inn

**Silver Sponsors**  
Vogel & Gorman PLC  
Sturdiwheat  
Wiederholt's Supper Club

## Supporters

Al's Antiques  
Bev's Cafe  
Cannon River Winery  
Corner Medical  
Cut Above Home  
Falconer Vineyards  
Ferrin Furniture Co.  
Fiesta Cancun

Hallstrom's Florist & Gifts  
Meatheads Meats & Deli  
Pottery Place Antiques  
Red Wing Confectionery  
Third Floor Antiques  
Uffda Shop  
West End Liquor  
Whimsy's Closet

New Members welcome to join during Convention. Come to the High School.

## Membership Application Form

Join Online Today To Get 2016 Commemorative

A Primary \$35 annual membership is afforded all the rights and privileges of the organization. An Associate \$15 annual membership is afforded all the rights and privileges of the organization except for the receipt of the newsletter. There **must be at least one Primary membership per household address** in order to have other members at that address having Associate member status. Each membership is afforded the right to purchase one Convention commemorative.

Please indicate if your membership is:

- New Membership  
 Renewal

Type of membership:

- Primary annual membership fee \$35  
 Associate annual membership fee \$15

Name \_\_\_\_\_

Address \_\_\_\_\_

City \_\_\_\_\_ State \_\_\_\_\_ Zip \_\_\_\_\_

E-mail Address \_\_\_\_\_

MEMBER and/or Chapter who interested you in joining: \_\_\_\_\_

Send Check, money order, or  
credit card info to:

Red Wing Collectors Society  
P.O. Box 50  
Red Wing, MN 55066-0050

Call 800-977-7927 | Online: [www.ERWSC.org](http://www.ERWSC.org) | E-mail: [director@redwingcollectors.org](mailto:director@redwingcollectors.org)

## Crock Fest Sponsors

**larry's jugs**  
ANTIQUES



First State Bank of RED WING



RED WING • MAZEPPA • MEDFORD  
[www.fsbredwing.com](http://www.fsbredwing.com)



First Farmers  
& Merchants



Baking the tradition of excellence

1161 4th St S  
Cannon Falls, MN  
507-263-0352

## COUNTRY SIDE Antique Mall

OPEN DAILY  
Mon-Sat 9:30-5:30  
Sun. 11-5:30

Located midway between  
Rochester and the Twin  
Cities. Take Hwy. 19 or  
 Cty. Rd. 24 Blvd. exits  
 off Hwy. 52. Located  
 next to the John Deere  
 Dealership on the south  
 side of town.



Extended hours  
for the Pottery  
Convention  
Thursday - Friday -  
Saturday  
9am - 8pm

We have over 4,000 Red Wing Pottery  
Items! Stop in and check us out.

# EDUCATION - Thursday & Friday, July 7 & 8

## Keynote

**Title: Whitewater Potters**  
**Speaker: Henry Hecker**  
**Thursday: July 7, 10:30 a.m.**

There were at least four earthenware potters that operated in Whitewater, Wisconsin from the late 1840's to about 1870. The presentation will provide a short history of each potter, years of operation, location and clay sources, wares produced, and methods of distribution. An extension of one of the businesses to Berlin, Wisconsin will also be described. Numerous photos of beautiful and distinctive Whitewater pottery will be shown with possible attribution made by correlating shards dug at some of the pottery sites with surviving specimens. The causes for the rise and fall of these businesses will be included in the story.

### Speaker Biography:

Henry Hecker has been collecting Wisconsin earthenware, stoneware and early bottles since 1970. In addition to pieces made by Wisconsin potters, his collection also includes an extensive collection of advertising jugs and crocks including many made by the Red Wing companies. He is a graduate of UW-Milwaukee (BA) and UW-Whitewater (MBA) and is a retired marketing executive. Henry has been married to Diane for 37 years and the couple has two sons, John and Erik. Since retirement, Henry has been able to devote more time to his hobby and is currently doing research on Wisconsin potters with two other collectors, Peter Maas and Mark Knipping. This study includes digs at pottery sites for correlation of shards to surviving ware, old newspaper, census, city directory, and genealogy records.

## FRIDAY, JULY 8 EDUCATIONAL SEMINARS

### Session 1: The Ebb Tide and Ceramastone Lines

Speakers: Terry Moe and Larry Roschen  
10:00 a.m. to 10:50 a.m.

Larry Roschen and Terry Moe will review the Ebb Tide and Ceramastone lines. These lines represent the last of the dinnerware patterns produced by Red Wing. Ebb Tide includes only one pattern while the Ceramastone line includes six patterns. In addition, information about recent dinnerware finds will be presented as time permits.

### Session 2: Provincial 1941 and other lines of the 1940s

Speakers: Terry Moe and Larry Roschen  
11:00 a.m. to 11:50 a.m.

As a companion to the RWCS Newsletter series "Introduction to Dinnerware" Larry Roschen and Terry Moe will reprise this seminar first presented in 2006 so that it may be recorded and added to the RWCS Library. The Provincial 1941 Line includes Normandy (Early and Late),

Ardennes (Early and Late), Orleans, and Brittany. The other Lines included in the seminar are "Oomph" (Red Wing Bakeware), Hospitality Ware, Labriego, Party Ware, Fruit or Salad, and Provincial Cooking Ware. It will contain updated information discovered since 2006.

### Session 3: Concord Line Dinnerware

Speakers: Terry Moe and Larry Roschen  
1:00 p.m. to 1:50 p.m.

As a companion to the RWCS Newsletter series "Introduction to Dinnerware" Larry Roschen and Terry Moe will reprise the Concord Line seminar first presented in 2008 so that it may be recorded and added to the RWCS Library. It will contain updated information discovered since 2008 and address all of the Concord Patterns.

These seminars are based almost entirely upon primary source materials from Red Wing Potteries. Brochures, Price Lists, Company internal documents, advertising materials and displayed dinnerware items provide the resources for the presentation.

### Speaker Biographies:

Terry Moe and his wife Marilyn have been collecting Red Wing pottery since they inherited a partial set of Gypsy Trail

Plain and Reed in 1975 from Terry's Grandmother. They primarily collect dinnerware. Gypsy Trail, Wreath, Ivanhoe, Nassau, Ardennes, Hotel or Restaurant, and Normandy along with Merrileaf have been their main focus. Primary source materials allowing them to document dinnerware have become a major interest.

Larry Roschen and his wife Kathy have collected all forms of Red Wing pottery since 1980. Red Wing pitchers, teapots, salt & pepper shakers are primary collecting interests along with building complete sets of several dinnerware patterns. Larry's interests eventually turned from growing the collection to learning more about the Red Wing dinnerware lines through research of vintage documents. Larry currently serves as the dinnerware advisor for the "Ask the Experts" section of the RWCS website and serves on the board of the Red Wing Collectors Society Foundation.

Larry and Terry have conducted numerous dinnerware seminars for RWCS Midwinter and Summer Conventions.

### Session 4: Mittelstaedt General Store Millbank, SD

Speaker: Robert Mittelstaedt  
2:00 p.m. to 2:50 p.m.

Come and meet Robert Mittelstaedt

## Hands On Pottery Education

Celebrate the RWCS turning 40! Create your own #40 or Wing  
 Presenter: Richard Spiller  
 Cafeteria  
 Thursday July 7 and Friday July 8  
 9:00 a.m. – 3:00 p.m.

\$20 each or both for \$35 +shipping

- #40
- Wing Shape

During the Convention on Thursday and Friday, stop by Richard Spiller's booth in the Cafeteria and decorate your own Wing, #40, or both with engobe glaze and applying the scraffito technique. After the Convention, the piece will be fired and shipped to you. **Visit the RWCS Website to Learn More!**

### Presenter Biography:

Richard Spiller, a resident of rural Wisconsin, was educated at Western Michigan University and the University of Wisconsin – Madison. An Emeritus Professor of Art at Eastern Carolina University, Spiller has been a practicing potter and ceramic artist for nearly 50 years. His expertise includes kiln building with firing experience from corn cob raku to Tozan Noboigama and firing to cone 10 reduction.



## Orientation for First Timers

Speaker: Catherine Beall  
 Thursday: July 7, 9:00 a.m. – 10:00 a.m.  
 Friday: July 8, 9:00 a.m. – 10:00 a.m.

If 2016 will be your first time attending the Red Wing Collectors Society Convention, there is a lot to see and do! Start your first Convention experience out right by attending an Orientation Seminar led by longtime RWCS member Catherine Beall. Catherine will discuss all of the activities that are lined up and offer tips on making the most of your Convention experience.

### Speaker Biography:

Hello all, my name is Catherine Beall. I have been involved in the Red Wing Convention for over ten years now. I have been speaking at the Convention for four years now. My interest in Red Wing is the history and preservation of that history. The Charles E. Murphy prints are my particular area of interest. Hope to see you all there.

## Shared Interest Groups

H100 Classrooms  
 Thursday, July 7, 2:30 p.m. – 3:30 p.m.

Come show off your favorite piece, new find at Convention, or photos of your collection. Talk with other RWCS members that share your specific Red Wing collecting passion for Dinnerware, Stoneware, or Art Pottery. This is your time to network with other collectors and swap stories, ask questions and get connected with other RWCS members with your area of interest.

**More groups may be created on site as requested.**

Bean Pots	Kent Williamson
Red Wing Dinnerware	Terry Moe John Sagat

## MidWinter Focus Group

Friday, July 8  
 Choir Room - C 100  
 1:00 p.m.

All members are invited to this information and feedback session on the MidWinter GetTogether, which traditionally has been a more intimate gathering than the RWCS Convention. The nature of this event enables the Society to make it easier for members in different areas to attend by rotating it amongst different regions within the Midwest. It also gives different Chapters the opportunity to host. Recently held in Wisconsin, MidWinter will be in Des Moines in 2017. The location for 2018 and beyond has yet to be determined, so come to this session to share your thoughts and ideas for the future of MidWinter, ask questions about the site selection process in the past, and learn more about our facility requirements for the event. All members are encouraged to come and join the discussion!

# EDUCATION - Thursday & Friday, July 7 & 8

whose father owed the Mittelstaedt's General Store of Milbank, South Dakota. The store opened in 1883 and was called a "Grocery and Crockery Store". Over its eighty year history it was a huge purchaser of Red Wing crocks. Learn about the life of the general store and how butter and other food items were bought and sold. The general store was extremely important to the success of a town. This was one of the best. **Article page 17.**

## Crafting Beer in the Desirable City: Red Wing's Brewing History

Speaker: Scott Kolby

Session 1: 10:00 a.m. to 10:50 a.m.  
Session 2: 11:00 a.m. to 11:50 p.m.

Red Wing's early industries were founded because of the local resources that were readily available. These included good clay, which was used in making quality stoneware and piping, and abundant grain, which gave rise to malteries, mills, and breweries. This session will take you on a tour of Red Wing's original breweries and beers, and introduce you to the people who brought them to life.

### Speaker Biography:

Scott Kolby is originally from Toledo, Ohio, and moved to the area to work with the Red Wing YMCA. Starting as homebrewers, he and his business partner, William "Norm" Norman, founded the Red Wing Brewery in 2011 and opened in December 2012, sixty-one years after the last brewery in Red Wing had closed.

## Is That Right?: Aftermarket Dinnerware and Art Pottery

Speaker: Laura Beall

Session 3: 1:00 p.m. to 1:50 p.m.  
Session 4: 2:00 p.m. to 2:50 p.m.

Did you know that after the Red Wing Potteries closed in 1967, many of the iconic molds were used by different potteries? Explore the differences in original and aftermarket dinnerware and art pottery and learn how to tell if the piece in front of you is "original" or "new". Discussion will include hands on examples of molds being used, produced, and copied from the 1970s to today.

### Speaker Biography:

Laura Beall has been collecting Red Wing since the day she was born and could spot a piece of dinnerware before she started kindergarten. She began volunteering with the Red Wing Collectors Society in 2002 in the Display Room, where she currently serves as chair. She also collects original Red Wing molds and mold literature. Laura and her family operate a small pottery in South Dakota that occasionally uses original Red Wing molds to demonstrate the longevity of the molds' useful life.

## Red Wing Art Pottery

Speaker: Ray Reiss

Session 1: 10:00 a.m. to 10:50 a.m.  
Session 2: 11:00 a.m. to 11:50 p.m.

Let's talk Red Wing Art Pottery! Informal question and answer session. Feel free to bring your Red Wing pieces to be identified and discussed.

### Speaker Biography:

Ray Reiss wrote, photographed a published Red Wing Art Pottery, Red Wing Art Pottery Two, and Red Wing Dinnerware Price & Identification Book.

## Dump Finds

Speakers: Paul Boudin & Connie Mathison

Session 3: 1:00 p.m. to 1:50 p.m.  
Session 4: 2:00 p.m. to 2:50 p.m.

Come and join us for some fun and informational discussions on our coolest digs from Pottery Road and the Red Wing Dump. It has been another good year of digging. We have unearthed some neat and unusual pieces. Last but not least, due to my overflowing shed, we will have a "few" shards to give away!

### Speaker Biographies:

Paul and Connie joined the RWCS in 2007. After attending Steve Showers seminar that year, they were hooked on digging. They also go with Steve and Phyllis Showers around the area digging old bottle dumps. They have been collecting stoneware since the year 2000. Paul collects salt glaze, advertising, and has recently started collecting art pottery. Connie loves bowls, but does collect other RW pieces. They are members of the Gopher and Trails West Chapters. They attend MidWinter also.

## Red Wing Salt Glaze Part 1 & 2

Speaker: Rick Natynski

Session 1: 10:00 a.m. to 10:50 a.m. - PART 1

Session 2: 11:00 a.m. to 11:50 p.m. - PART 2

**NOTE: This is a two-part presentation. The material covered in the 1st session will not be covered in the 2nd session, and vice-versa. Those who only attend the 2nd session will be joining halfway through. If you want to see the entire presentation, please plan on attending both sessions.**

Whether you're new to collecting Red Wing salt glaze stoneware or a seasoned veteran, this presentation is for you. RWCS Newsletter editor Rick Natynski will share his excitement for salt glaze, showing pictures of a wide range of salt glaze crocks, jugs, churns and water coolers with decorations ranging from the most common to the rarest and most desirable. Examples of every cobalt decoration known to appear on Red Wing stoneware will be covered, as will undecorated pieces like salt glaze lids, bowls and mugs. You're guaranteed to see pieces you've never seen before if you attend this presentation!

### Speaker Biography:

Rick started collecting Red Wing in 2001 and has served as the editor of the RWCS Newsletter since 2006. Although his true area of interest is Red Wing salt glaze stoneware with cobalt decorations, he also collects zinc glaze stoneware with advertising from Wisconsin, British Columbia and other states and provinces. He also enjoys Chromoline and Decorator Line art pottery. Outside of Red Wing, he collects old wooden crates with Milwaukee advertising. Rick and his wife, Elsa, live in Pewaukee, Wis. with their three

CONTINUED ON PAGE 14

## Educational Seminars • Thursday, July 7 - Friday, July 8, 2016

### ORIENTATION FOR FIRST TIMERS

#### Catherine Beall

Choir Room C-100  
Thursday & Friday, July 7 & 8  
9:00 a.m.

### HANDS ON POTTERY

Cafeteria  
Thursday & Friday, July 7 & 8

### KEYNOTE

#### Whitewater Potters Henry Hecker

Auditorium  
Thursday, July 7  
10:30 a.m.

### SHARED INTEREST GROUPS

H100, Pod  
Thursday, July 7  
2:30-3:30 p.m.

### MIDWINTER FOCUS GROUP

MidWinter Committee  
C-100, Choir Room  
Friday, July 8

	H101	H102	H103	H104	H105	H109
Session I 10:00 to 10:50	The Ebb Tide and Ceramastone Lines  Terry Moe Larry Roschen	Crafting Beer in the Desirable City Red Wing's Brewing History Scott Kolby	Red Wing Art Pottery  Ray Reiss	Red Wing Salt Glaze Stoneware Part 1  Rick Natynski	Updates from the Pottery Museum  RWCS Foundation	Privy Digging  Steve Showers Mark Youngblood
Session II 11:00 to 11:50	Provincial 1941 and Other Lines of the 1940s Terry Moe Larry Roschen	Crafting Beer in the Desirable City Red Wing's Brewing History Scott Kolby	Red Wing Art Pottery  Ray Reiss	Red Wing Salt Glaze Stoneware Part 2  Rick Natynski	Updates from the Pottery Museum  RWCS Foundation	Privy Digging  Steve Showers Mark Youngblood
Session III 1:00 to 1:50	Concord Line Dinnerware  Terry Moe Larry Roschen	Is That Right?: Aftermarket Dinnerware & Art Pottery Laura Beall	Dump Finds  Paul Boudin Connie Mathison	Collecting Zinc Glazed RW Stoneware Larry Peterson Steve Poeschl	The River Underground: Finding the Historic Jordan Creek Casey Mathern	White Ware & Kitchen Ware from the 1930s  Dennis Nygaard
Session IV 2:00 to 2:50	Mittelstaedt General Store Millbank SD  Robert Mittelstaedt	Is That Right?: Aftermarket Dinnerware & Art Pottery Laura Beall	Dump Finds  Paul Boudin Connie Mathison	Collecting Zinc Glazed RW Stoneware Larry Peterson Steve Poeschl	Symbolism on Victorian Era Gravestones  Dustin Heckman	White Ware & Kitchen Ware from the 1930s  Dennis Nygaard

**EDUCATION DAY continued from page 13**

daughters. You can contact him at newsletter@redwingcollectors.org.

### Collecting Zinc Glazed Red Wing Stoneware

Speakers: Larry Peterson & Steve Poeschl  
Session: 3 1:00 p.m. to 1:50 p.m.  
Session: 4 2:00 p.m. to 2:50 p.m.

Larry Peterson and Steve Poeschl will talk about what makes Red Wing so collectible today. Zinc glazed items are collected or have been collected by almost every Red Wing collector. Identifying hand-turned pieces and molded items will be discussed, with examples provided. Marks and decorations will be covered to help you date your items. They will talk about usage, and how to check condition. Fun time for sharing will be included.

### Speaker Biographies:

Larry Peterson, RWCS Charter Member and Hall of Fame member has been collecting Red Wing since 1970. Peterson's ties to the RWCS began with an invitation to bring his favorite Red Wing item to the first Convention July of 1977 for Lyndon Veil's first book signing. Peterson has participated in ever Convention since. He's also serves and Education Chairperson, President of the Cannon Valley Chapter, co-authored three books ( Red Wing Stoneware, Red Wing Collectibles, and The Encyclopedia of Red Wing Stoneware.) He is the owner of Larry's Jugs Antiques and has been actively involved with the Red Wing Collectors Society Foundation and his dream of creating the Pottery Museum of Red Wing since its beginning. His passion is to promote the history, the collecting, and the investing in Red Wing

stoneware and pottery by sharing and having fun.

Steve Poeschl has been collecting Red Wing for 44 years and has been a member of the RWCS since 1987. Poeschl grew up using Red Wing items in his house and his collection started when a local auctioneer began procuring crocks for him. He quickly became fascinated with the different markings; and, from that moment, he decided he wanted one of each! His education in collecting began with door-knocking that led him to Larry's Jugs (then on Wilkinson St. in Red Wing). With the "clubhouse-like atmosphere" of Larry's Jugs, Poeschl met many other collectors and delighted in the exchange of knowledge. He puts his education experience to work by sparing the "mistake" purchases for other collectors by volunteering as an RWCS Convention Auction

grader. He feels "folks become more excited about the hobby when true collectors help education others. Our members will expand, and we'll have more fun."

### Updates from The Pottery Museum of Red Wing

Speaker: RWCS Foundation  
Session 1: 10:00 a.m. to 10:50 a.m.  
Session 2: 11:00 a.m. to 11:50 p.m.

Robin Wipperling and Board Members of the RWCSF will present an update on the financials of the Pottery Museum of Red Wing. Join us for a discussion on the direction of the museum in the future. Come hear about all the great events that have been and will be happening.

**CONTINUED ON PAGE 15**



## YOUTH PROGRAMS SWEET SIXTEEN

### 40TH ANNUAL CONVENTION RUBY RED WING

**KIDS VIEW  
&  
YOUNG  
COLLECTORS**

THURSDAY, JULY 7	
TIME	ACTIVITIES
8:00 - 10:00 ART ROOM	<b>DONATION PIECE(S) CHECK IN</b>
10:45 - 11:00 ART ROOM	<b>REGISTRATION &amp; INTRODUCTIONS</b> PLEASE ATTEND THIS SESSION FOR INSTRUCTIONS FOR BOTH PARENTS AND KIDS
11:00 - 12:30 ART ROOM	<p><b>PAINT YOUR OWN RED WING</b> Red Wing Art Reach will lead the kids to design and paint on an authentic piece of Red Wing dinnerware. The plate will dry overnight and be available on Friday afternoon.</p> <p><b>STAMP YOUR OWN STONWARE</b> Mike Robinson will assist kids as they design their own specially made version of miniature stoneware. The piece will be fired and available for pick up on Friday afternoon.</p> <p><b>YOUTH 13+</b> Young Collectors, ages 13 and up will have the opportunity to throw clay on the wheel with RWCS member and potter Frank Sheldon.</p>

FRIDAY, JULY 8	
TIME	ACTIVITIES
9:45 - 10:00 ART ROOM	<b>REGISTRATION &amp; INTRODUCTIONS</b> PLEASE ATTEND THIS SESSION FOR INSTRUCTIONS FOR BOTH PARENTS AND KIDS  <b>LUNCH WILL BE PROVIDED FOR KIDS.</b>
10:00 - 2:00 ART ROOM  LUNCH 11:30	<p><b>MAKE YOUR OWN SWEET POTTERY</b> <b>RICHARD SPILLER</b> Richard Spiller will lead the kids in making their own piece of candy out of clay. From scrafitto to engobe glaze something for every creative mind. Pieces will be shipped.</p> <p><b>THE BIG 4 0</b> Kids View participants led by Red Wing Art Reach will decorate a big #40 to put on display to celebrate the RWCS's 40th Convention and Anniversary.</p> <p><b>RED WING CANDY DISHES</b> RWCS member Sam Edge, with the help from the RWCS Facebook Chapter, and Yoshi Hoffman, will help the kids learn all about Red Wing's sweet dishes.</p> <p><b>DIGGIN POTTERY</b> Goodhue County Historical Society Education &amp; Outreach Coordinator James Clinton will lead the archeological dig for kids to find and decorate their own Red Wing dish.</p>
	<b>SHOW &amp; SALE</b> Sellers will be set up and ready to wheel and deal with the kids at this event. Using Red Wing Bucks, the kids will have the opportunity to walk away with a sweet deal on a piece of Red Wing.

**PARENTS:** Your child will be expected to stay in the Art Room for the duration of the activity UNLESS you have given express permission that your child may leave independently.

**EDUCATION DAY** continued from page 14**Speaker Biography:**

Robin Wipperling has been the Museum Manager since 2014. Together with the RWCS Foundation Board, she works to grow awareness of the museum to the Red Wing Community, Museum visitors, and nationwide. Robin and the Board of Directors keep the mission of the Museum as the driving force for all museum activities and programs.

**The River Underground:  
Finding the Historic Jordan  
Creek**

Speaker: Casey Mathern, Curator of Objects and Exhibits, Goodhue County Historical Society

Session 3: 1:00 p.m. to 1:50 p.m.

Session 4: 2:00 p.m. to 2:50 p.m.

If you've visited downtown Red Wing, chances are you've crossed the Jordan Creek. Sometimes called a river, the Jordan has flowed unseen beneath visitors' and residents' feet for over a century. The Jordan once ran above ground through a ravine that divided Red Wing in two, flooding its banks, damaging property, and inconveniencing travelers. The Jordan also formed an important confluence with the Mississippi, creating a natural harbor where the Dakota stored canoes. Join curator Casey Mathern for a rare glimpse of the stories, folklore, photographs, and other media that capture this elusive body of water.

**Speaker Biography:**

Casey Mathern is Curator of Objects & Exhibits at the Goodhue County Historical Society (GCHS) in Red Wing, MN. Casey is the Project Manager for the new Smithsonian traveling exhibit Water/Ways, coming to the GCHS in October. The historic Jordan Creek will be featured in a local exhibit and programs surrounding Water/Ways, including a walking tour and interpretive signage being created for downtown Red Wing. Casey holds an MA in Decorative Arts, Design History, and Material Culture from the Bard Graduate Center in New York. Casey collects twentieth century design, drawings, and books.

**Symbolism on Victorian Era  
Gravestones**

Speaker: Dustin Heckman, Goodhue County Historical Society

Session 4: 2:00 p.m. to 2:50 p.m.

Have you ever walked through a cemetery and wondered: what does that symbol mean on the headstone? Learn how to identify these symbols from the Victorian Era so you can impress your friends with your new found knowledge!

**Speaker Biography:**

Dustin Heckman is the Executive Director of the Goodhue County Historical Society. For the past 10 years, he has worked in local history museums and enjoys showcasing snippets of history to the public.

**Privy Digging**

Speakers: Steve and Phyllis Showers & Mark Youngblood

Session 1: 10:00 a.m. to 10:50 a.m.

Session 2: 11:00 a.m. to 11:50 a.m.

Steve and Phyllis Showers and Mark Youngblood will share the interesting stories of privy digging. They will explain how to find outhouse (privies) and share the finds. During this seminar, these diggers will show over 20 different bottles, Red Wing pieces, and other interesting artifacts. Come hear and see these new finds in privies.

**Speaker Biographies:**

"Red Wing Archeologist" Steve Showers has been a Red Wing pottery dump digger for over 50 years and is a RWCS Hall of Fame Member. He has been a speaker at every Convention since he joined the RWCS. Steve and his wife, Phyllis, are active members of the Gopher Chapter, Iowa Chapter, and Cannon Valley Red Wing Collectors Club. Steve and Phyllis are avid gardeners, using their Red Wing sewer pipe as planters, and shards as ground cover and stepping stones. They live in Welch, Minnesota.

Mark Youngblood is an avid bottle digger in outhouses and privy sites for over 40 years. His main digging interest is bottles; however, he also has discovered several Red Wing Lunch Hour pieces. In addition, to his digging finds he enjoys collecting Red Wing advertising beat pots, pitchers, and beater jars. He manages the Old Saint Paul Minn Facebook Group. He lives in White Bear Lake, MN.

**Title: White Ware and  
Kitchen Ware from the 1930**

Speaker: Dennis Nygaard

Session 3: 1:00 p.m. to 1:50 p.m.

Session 4: 2:00 p.m. to 2:50 p.m.

In this seminar Dennis will share more information and new finds of the White Ware and Kitchen Ware items found on Pottery Road. There currently is a display in the Pottery Museum of Red Wing. During this seminar Dennis will share more interesting facts and finds regarding this "newly discovered" Red Wing production line. In addition, he will be revealing some new items during this seminar.

**Speaker Biography:**

Dennis Nygaard is a long time RWCS member inducted in to the RWCS Hall of Fame in 2011. He has been digging in the Red Wing dump since 1980, often with fellow digger Steve Showers. In addition to his dump finds, Dennis collects stoneware fruit jars from all United States potteries with a special interest in New Brighton, PA pottery. Dennis lives in Hastings, MN with his wife, Virginia, and has three sons.

**2016 Convention Banquet  
Saturday, July 9**

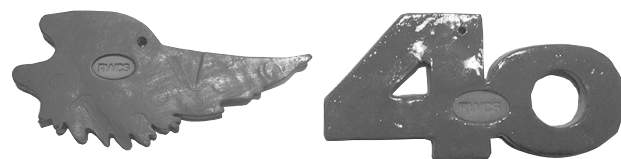
**MOUNT FRONTENAC GOLF COURSE**  
Frontenac, MN

**Door  
Prizes**

MOUNT  
FRONTENAC

**Tickets & Registration:  
\$28 adults • \$10 children  
5:30 social • 6:30 dinner**

Just off of Highway 61 Mount Frontenac is a stunning 18-hole golf course that overlooks the beautiful Mississippi River Bluffs and Lake Pepin. Surrounded by beautiful trees, the rolling terrain and excellent scenery. Located 9 miles south of Red Wing on Highway 61.

**HANDS ON EDUCATION**

**Thursday, July 7 and Friday, July 8**

**Sign up to make your own RWCS wing or  
#40 for your collection!**

During the Convention on Thursday and Friday, stop by Richard Spiller's booth in the Cafeteria and decorate your own Wing, #40, or both with engobe glaze and applying the scraffito technique. After the Convention, the piece will be fired and shipped to you.

**Make your own or order custom!  
\$20 each or both for \$35 +shipping**

**RWCS ANNUAL MEETING  
Friday, July 8 • 3:15 p.m.  
Auditorium**

- Meet the newly elected Board Members
- See all the Chapter Commemoratives
- Congratulate our display winners
- Facebook Chapter will be recognized
- Little Brown Jug of Membership

**Special  
Commemorative  
Drawing**

# Crock Fest 2016 will be at Pottery Museum

By Ruth Nerhaugen  
Contributor

**A** new location and new activities are planned for Crock Fest 2016, an after-hours social for Red Wing Collectors Society members. It will be from 5 p.m. to 6:30 p.m. Friday, July 8, at the Pottery Museum of Red Wing.

In addition to music and treats, the event will feature a butter churning contest and the grand opening of the museum's new General Store exhibit (see related story).

Performing will be the Sliced Bread Jug Band from the Lake Pepin area of Western Wisconsin.

"Sliced Bread Jug Band music is wildly, hilariously cantankerous," said RWCS Executive Director Stacy Wegner. "Typically armed with stringed instruments, homemade percussion and, of course, jugs, the band performs both traditional old-style jug band music and original material arranged for the modern jug band orchestra."

Members are Bryce Black on jug; Ben Johnson on washboard; Gib Krohn on wash-tub bass and washboard; Patrick McCoy on guitar; Bruce O'Brien on banjo and mandolin; Janice Randen; Joe Thielen on guitar;



and Harry Warden on guitar, ukulele, harmonica, keyboards and nose flute. All the band members are vocalists as well.

While listening to the music, people can enjoy root beer floats from Flat Pennies and finger-food appetizers from Fiesta Cancun. The restaurant also will have drink specials down the hall in the bar.

Butter churning is new this year but they hope to make it an annual competition, according to Museum Manager Robin Wippering.

Sign your team up for a chance to win the soon-to-be-coveted Butter Award, not to

mention bragging rights, Wippering said.

The winning team will be the group that is first to successfully churn butter. Members can take turns working the churn.

The museum will provide the cream; teams are asked to provide their own churns and dashers.

Any group interested in entering a team should preregister by contacting Wippering at 651-327-2220.

Casual dress is fine for this event, which also will include a silent auction. Door prizes will be awarded.

Museum will be open until 8 p.m.



Thank you to our sponsors:

**larry's jugs**  
ANTIQUES



**Hanisch**  
Bakery & Coffee Shop  
Baking the tradition of excellence



First Farmers & Merchants

## "Introduction to Dinnerware" - Video Lending Library Project

By Larry Roschen and Terry Moe

**B**ased on a request by Stacy Wegner, RWCS Executive Director, and with the enthusiastic encouragement of Rick Natynski, RWCS Newsletter Editor, Larry and Terry developed a series of articles titled "Introduction to Dinnerware". The series covered all of the known patterns of Red Wing Dinnerware and appeared beginning in December of 2009 and ending in February of 2016. As a companion to the Newsletter series, the RWCS Video Lending Library will be offering the seminar series dealing with the same patterns. Several of the lines are already available for loan and the remainder will be made available over the next few years. Larry and Terry will be presenting two or three seminars during the Educational Seminar sessions each summer. Each seminar will only be offered one time, recorded, and added to the Library.

This summer the seminars offered will be "Ebb Tide and Ceramastone", "Concord", and "Provincial 1941 and other Lines of the 1940s" (page 12).

The seminars are based almost entirely upon primary source materials from Red Wing Potteries. Brochures, Price Lists, Company internal documents, advertising materials and photos of dinnerware items provide the resources for the presentations. Some of the seminars were previously presented but not recorded and these seminars will be updated to reflect information discovered since the original seminar. The seminars provide a much more detailed examination of the subjects than was possible in a two page article.

The Video Lending Library may be found at [www.redwingcollectors.org](http://www.redwingcollectors.org).

Terry says "It is a great resource and I have utilized it a number of times over the years".

Terry Moe (left) and Larry Roschen (right) being inducted into the RWCS Hall of Fame. photo courtesy of Rick Natynski





# New museum exhibit depicts General Store

By Ruth Nerhaugen  
Contributor

**R**ed Wing Stoneware items made for the Mittelstaedt Store in Milbank, S.D., will be spotlighted in a new exhibit at the Pottery Museum of Red Wing. Arthur and Harold Mittelstaedt's store inspired the exhibit.

Grand opening for the exhibit will be part of the 2016 CrockFest, which runs from 5 p.m. to 6:30 p.m. Friday, July 8, at the museum.

Robert Mittelstaedt from Lincoln, Neb., will talk about his family's business and the importance of general stores to people living in rural America at a time when every small town had at least one.

Larry Peterson, museum board member, was project manager, assisted by volunteer Steve Johnson.

Encouraged after seeing similar exhibits in other museums, Peterson started researching the topic of general stores.

"I found that the Mittelstaedt Store in South Dakota was a store that Red Wing made some of the best advertising pieces for," he said.

Adding to its appeal was the fact that Robert Mittelstaedt had written a comprehensive article about his family's store, Peterson said. Mittelstaedt is a retired university professor in Nebraska.

The South Dakota History Center is allowing the pottery museum to use all this material for educational purposes.

The business had a lot in common with Red Wing's pottery industry, he noted. It operated for several decades, and had to keep changing with the times, he explained.

Red Wing stoneware items made for Mittelstaedts are being loaned to the local museum for the year-long exhibit, including crocks of various sizes, butter crocks and other pieces. An informational handout on general stores is in the works.



The Mittelstaedt General Store started out on Main Street in Milbank, S.D., in a building with a 25-foot front. In honor of harvest festival in 1903, the Mittelstaedts chose to feature potatoes as a local crop. The store inspired a new exhibit opening during convention at the Pottery Museum of Red Wing.

Numerous other antiques representing the general store era also will be on display, from an old cash register to a coffee grinder, barrels, a cast iron stove, a counter and shelves full of products.

There is much to be learned from the objects, Museum Manager Robin Wipperling said, including the way women would barter things such as eggs for groceries, and farmers would purchase supplies on credit until their crops could be harvested and sold.

"It will transplant you back in time to General Store days in the late 1800s to the early 1900s," Wipperling said. She looks forward to using the store as an educational tool when young people come to see the museum.



In 1907, the Mittelstaedt partners moved down Milbank's Main Street to a building with a 50-foot storefront (next to the corner building).



Gustav (left) and August (right) Mittelstaedt are pictured at the fabric counter in their general store in Milbank, S.D., between 1883 and 1907 — probably closer to 1903. The Pottery Museum of Red Wing will open a new General Store exhibit during convention.

## **Newly Added Educational Seminar**

Mittelstaedt  
General Store  
Millbank, SD  
Robert Mittelstaedt,  
Speaker  
2:00 - 2:50 pm  
Friday, July 8  
H101



Photos courtesy  
Robert Mittelstaedt

## RWCS CHAPTER PRESIDENTS

**BADGER CHAPTER**

Bob Morawski, President  
2130 S Ridgeway Dr  
New Berlin WI 53146  
262-853-8269  
morawskib@yahoo.com



Heidi Hahlen, Secretary  
4909 Foxfire Trail  
Middleton WI 53562  
608-827-0331  
Cell 608-712-9335  
hshahlen@tds.net  
rwcsbadgerchapter.org

**CANNON VALLEY CHAPTER**

Wayne Miller, President  
2669 COUNTRY CT  
RED WING, MN 55066-4121  
wjmiller@charter.net

**GOLDEN STATE CHAPTER**

Bruce Cameron, President  
PO Box 690  
French Camp, CA 95231  
510-537-0325  
ffr554@aol.com  
goldenstateredwing.com

**GOPHER CHAPTER**

John Sagat, President  
7241 Emerson Avenue S.  
Richfield, MN 55423-3067  
(612) 861-0066  
thesagats@comcast.net



Michelle Mueller  
Membership Chair  
10736 Perry Drive N  
Brooklyn Park, MN 55443  
763-493-2638  
rwrincess@email.com

**ILLINOIS CHAPTER**

Jolene McKoon  
3124 4th St Apt 8  
Moline Il 61265  
309-797-3894  
j.mckoon@mediacombb.net

**INDIANA WINGERS CHAPTER**

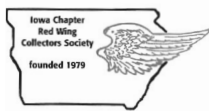
Cleo Dimmit, President  
9658 N.1175 W  
Monticello, IN 47950  
Phone: 574-965-2938  
cdd9658@comcast.net



Robert Murray, Vice President  
4550 West Old Lincoln Way  
Wooster, OH 44691  
Phone: 330-264-5740  
Bettelee1315@yahoo.com

**IOWA CHAPTER**

Heidi Patterson, President  
407 SW 32nd Street  
Ankeny, IA 50023  
(515) 669-0383  
hpatter33@gmail.com  
iowa.redwingcollectors.org

**LEWIS & CLARK CHAPTER**

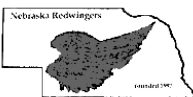
Doug Perkins, President  
188 47TH ST NE  
ANETA, ND 58212  
(701) 326-4263  
beehive@polarcomm.com



Sheila Schumacher, Secretary  
26900 Chowen Avenue  
Elko, Minnesota 55020  
952-356-6119  
rjsj@mhcsi.com

**NEBRASKA CHAPTER**

Louise Schleich, President  
6412 Chesterfield Ct  
Lincoln, NE 68510-2361  
402-489-6508  
ldschleich@aol.com

**PUGET SOUND CHAPTER**

Wally Armstrong, President  
24129 Old Owen Rd  
Monroe, WA 98272-7681  
360-794-7172  
armst101@aol.com

**ROCKY MOUNTAIN CHAPTER**

Rocky Mountain Chapter RWCS  
P.O. Box 39  
Wetmore, CO 81253  
(719) 251-4120  
Carolyn1697@gmail.com

**SIouxLAND REDWINGERS**

Catherine Beall, President  
28 Walnut St.  
Vermillion, SD 57069  
605-464-4541  
Catherine.C.Beall@gmail.com  
http://siouxland.redwingcollectors.org/

**SOUTHWEST REDWINGERS**

Kent Williamson, President  
3104 East Broadway Rd Lot 328  
Mesa, AZ 85205  
rwcokent@juno.com  
sw.redwingcollectors.org

**SUNSHINE STATE REDWINGERS**

Jerry Mounts, President  
227 Trevino Ct  
N Ft Myers, FL 33903-2628  
816-510-2248  
jerry@pressuremounts.com



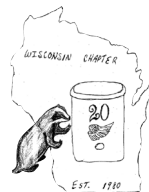
Don Peterson, Vice President  
2902 Limpkin Ln.  
Kissimmee, FL 34746-2745  
(612) 859-2101  
djpeterason4476@gmail.com

**TRAILS WEST CHAPTER**

Debbie Mischke, President  
25 White River Lane  
Defiance, MO 63341  
636-828-5811 (H)  
314-750-3665 (C)  
bmischke@centurytel.net  
trailswest.redwingcollectors.org/

**WISCONSIN CHAPTER**

Pete Pavloski, President  
1411 Rapids Trail  
Nekoosa, WI 54457  
715-325-3715  
pbpav@hotmail.com

**WOLVERINE CHAPTER**

Ken Bahlman, President  
44826 Malow Ave.  
Sterling Heights, MI 48317  
586-731-4628  
No Email



Bernie Banet, Secretary  
838 Heather Way  
Ann Arbor, MI 48104-2734  
734-665-7842  
bernie.banet@gmail.com

**RWCS FACEBOOK CHAPTER**

Chris Tincher  
1231 S City View Ct  
Wichita KS 67235  
316-708-5272  
cctincher@gmail.com



Dave "Yoshi" Hoffman  
2821 Lynx Rd  
Wausau, WI 54401  
715-355-8521  
senorh63@charter.net

## RWCS BOARD OF DIRECTORS / CONVENTION POSITIONS

**President**  
**LARRY BIRKS**  
26400 S HICKORY TRL  
HARRISONVILLE, MO 64701-1184  
Home: 816-380-1096  
Cell: 816-898-9260  
brgr3@embarqmail.com  
president@redwingcollectors.org

**Vice President**  
**PAUL WICHERT**  
W247S7000 SUGAR MAPLE DR  
WAUKESHA, WI 53189  
Home: 262-662-4305  
Cell: 414-731-0218  
redwingr@gmail.com  
vicepresident@redwingcollectors.org

**Secretary**  
**JOHN SAGAT**  
7241 EMERSON AVENUE SO.  
RICHFIELD, MN 55423-3067  
Home: 612-861-0066

Cell: not available  
thesagats@comcast.net  
secretary@redwingcollectors.org

**Treasurer**  
**DAN BECK**  
2215 HILL PLACE SW  
ROCHESTER, MN 55902  
Home: 507-252-5025  
Cell: 507-398-6358 \*\*  
bucksplacewi@gmail.com  
treasurer@redwingcollectors.org

**Historian**  
**NANCY LAMBERT**  
17 NEWCASTLE LANE  
BELLA VISTA, AR 72714  
Cell: 785-691-7213  
nancy194805@gmail.com  
historian@redwingcollectors.org

**Education Manager**  
**GLENN E. BEALL**  
29622 420TH AVE  
SCOTLAND, SD 57059  
Cell: 605-464-0516  
gbeall@iowatelecom.net  
education@redwingcollectors.org

**Representatives At Large**  
**RUSSA ROBINSON**  
1970 BOWMAN RD  
STOCKTON CA 95206-9654  
Home: (209) 463-5179  
rrussa@aol.com  
repatlargewest@redwingcollectors.org

**RICHARD A. NATYNSKI**  
N50 W25078 WILLIAM DR  
PEWAUKEE, WI 53072  
Phone: (608) 617-7424  
rnatynski@frontier.com  
repatlargeeast@redwingcollectors.org

**Auction Manager**  
**SCOTT HARDMAN**  
430 N MANLEY RD  
RIPON, CA 95366-3405  
Cell: 209-602-1461  
sloheat@aol.com  
auction@redwingcollectors.org

**Commemorative Manager**  
**BOB MORAWSKI**  
2130 S. RIDGEWAY DR.  
NEW BERLIN, WI 53146  
Home: none  
Cell: 262-853-8269  
morawskib@yahoo.com  
commemorative@redwingcollectors.org

**Display**  
**LAURA BEALL**  
215 W 7TH ST  
LOGAN IA 51546-1221  
Phone: 605-464-5941  
display@redwingcollectors.org

**Youth Programs (Kids View & Young Collectors)**  
**LINDA WIPPERLING**  
2684 FRANCES AVE  
RED WING MN 55066  
lindawipperling@yahoo.com  
kidsview@redwingcollectors.org  
651-764-2183

**Pre-Registration**  
**JIM & KAREN KEY**  
1617 ALVINA ST  
RED WING MN 55066  
winger.key@gmail.com  
651-388-5806

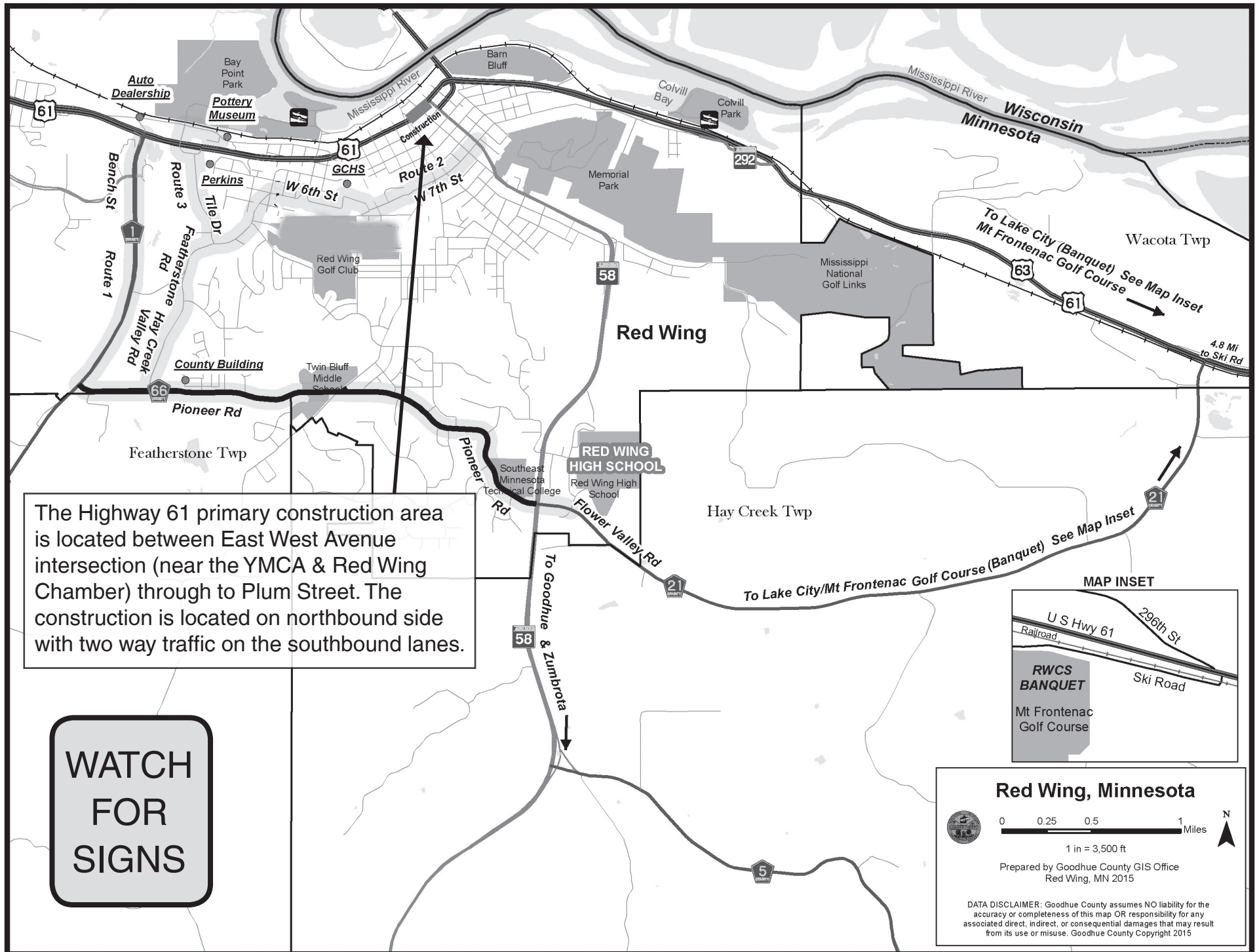
**Computer Registration**  
**HEIDI HAHLN**  
4909 FOXFIRE TRAIL  
MIDDLETON WI 53562  
608-827-0331  
hshahlen@tds.net

**Membership Committee Chair**  
**CHRIS TINCHER**  
1231 S. CITY VIEW CT  
WICHITA, KS 67235  
cctincher@gmail.com  
Phone: (316) 708-5272

**Technology Committee Chair**  
**MIKE STENSTROM**  
6204 SHAWNA ST  
WESTON, WI 54476  
mike.stenstrom@gmail.com  
Phone: (715) 218-8216

**Show & Sale**  
**DALE ERICKSON**  
1712 HARRISON CT  
NORTHFIELD, MN 55067  
Phone: 507-645-6771

**TIM & ROXIE LOCKARD**  
641-862-3239



## Alternate Routes to High School and Other Convention Event Sites

### Route 1: Pottery Place to Red Wing High School (RWHS) and Banquet

From the Pottery Place Lot take a left on to Old West Main Street. Turn left on Bench Street (County 1). Cross HWY 61 until you get to Pioneer Rd (County 66) and turn left. Continue on Pioneer Road passing the Middle School and the Tech College both on left. Cross HWY 58 and continue straight on Flower Valley Road (County 21). RWHS will be on the left.

Banquet (32420 Ski Rd): Continue past RWHS on Flower Valley Road (County 21) until it comes to an end at HWY 61 (10 miles), turn right on HWY 61 continue for 5 miles and turn right on Ski Road (which runs parallel with HWY 61).

### Route 2: Goodhue County Historical Society (GCHS)

From Pioneer Road turn on Hay Creek Valley Road which merges with Featherstone Road. At the stop sign at Tile Drive continue straight up the hill to the intersection of West 6th. Turn Right on West 6th Street and follow up the hill and past Red Wing Golf Course. Make a left turn and the GCHS is straight ahead.

From Highway 58 (Plum Street) find West 7th St, and go West until it comes to the 5th street intersection. Go straight on College Ave and up the hill. Turn right on Oak Street. GCHS is on the right.

### Route 3: Alternate Pottery Place to Red Wing High School

From the Pottery Place Lot take a left on to Old West Main Street. Turn left on Withers Harbor Drive and go under the HWY 61 bridge. Turn Right on Tile Drive. Follow Tile Drive until it ends at Featherstone Rd. Turn Right on Featherstone Road and continue until you reach Pioneer Rd. Turn Left on Pioneer Road. Continue on Pioneer Road passing the Middle School and the Tech College both on left. Cross HWY 58 and continue straight on Flower Valley Road (County 21). RWHS will be on the left.

# Show & Sale: Stoneware, Dinnerware, Art Pottery, Memorabilia and so much more!

## Saturday, July 9

**OPEN TO  
THE PUBLIC**

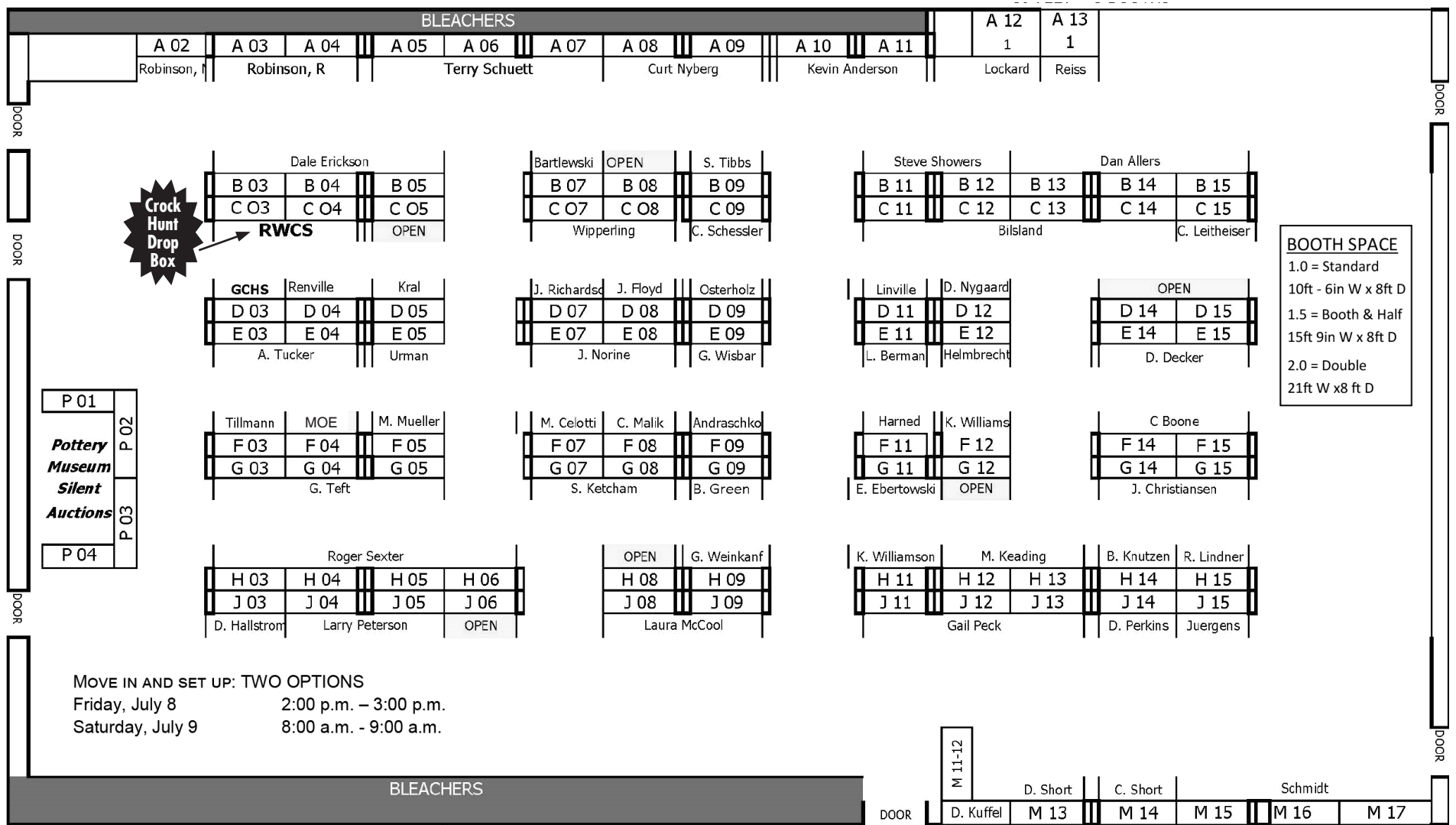
### Red Wing High School Gymnasium

**FREE  
ADMISSION**

## 9:00 a.m. - 1:30 p.m.

9:00 a.m. registered attendees

10:30 a.m. **FREE & open to public**



BOOTH	SELLER	BOOTH	SELLER	BOOTH	SELLER	BOOTH	SELLER
Allers, Dan .....	B 13-15	Helmbrecht, Gaylord ....	E 12	Perkins, Doug .....	J 14	Short, Dave .....	M 13
Anderson, Kevin .....	A 10-11	Juergens, Jay .....	J 15	Peterson, Larry .....	J 4-5	Short, Con .....	M 14
Andraschko, Steve W ...	F 09	Keding, Monica .....	H 12 -13	Pottery Museum of		Showers, Steve .....	B 11 -12
Bartlewski, Tom .....	B 07	Ketcham, Steven ....	G 07-08	Red Wing .....	P 01-04	Tefft, Gary .....	G 3-5
Berman, Lyle .....	E 11	Kral, Suzanne .....	D 05	<b>Red Wing Collectors Society</b>		Tibbs, Steve .....	B 09
Bilsland, William .....	C 11-14	Kuffel, Dave .....	M 11-12	<b>Crock Hunt Drop Box ..</b>	<b>C03-04</b>	Tillmann, Beth .....	F 03
Boon, Cristine L .....	F 14-15	Leitheiser, Carol .....	C 15	Reiss, Ray .....	A 13	Tucker, Ann .....	E 3-4
Cellotti, Mark .....	F 07	Lindner, Roseann .....	H 15	Renville County Historical		Urman, Michael .....	E 05
Christensen, Jack ...	G 14-15	Linville, Ed .....	D 11	Society .....	D 04	Weinkauf, Gary .....	H 09
Decker, Denny .....	E 14-15	Lockard, Roxanne .....	A 12	Richardson, Judith .....	D 07	Williams, Kevin .....	F 12
Ebertowski, Mark .....	G 11	Malik, Carl .....	F 08	Roberts-Knutzen,		Williamson, Kent .....	H 11
Erickson, Dale .....	B 03-05	McCool, Laura .....	J 8-9	Betty J .....	H 14	Wipperling, Steve ...	C 07-08
Floyd, Jeff .....	D 08	Moe, Terry .....	F 04	Robinson, Mike .....	A 02	Wisbar, Gary .....	E 09
Goodhue County Historical		Mueller, Michelle .....	F 5	Robinson, Russa .....	A 3-4		
Society .....	D 03	Nyberg, Curt .....	A 8-9	Schessler, Linda .....	C 09		
Green, Burley .....	G 09	Nygaard, Dennis .....	D 12	Schmidt, Laure .....	M 15-17		
Hallstrom, Dave .....	J 03	Osterholz, Lorraine .....	D 09	Schuett, Terry .....	A 5-7		
Harned, William .....	F 11	Peck, Gail L .....	J 11-13	Sexter, Roger .....	H 3-6		

**Booths Still Available  
Stop at Registration  
\$45 each**

**Located 1/2 Block from  
Pottery Museum**

- Reubens • Brats
- Burgers • Steaks • Ribs
- Daily Specials
- Friday Fish Fry
- Homemade Pizzas

**—Full Bar—  
Open 11am - Close**

**OPEN BOWLING  
Noon - Close Daily  
Summer Specials**

**Bierstube  
Bowl & Grill**

233 Withers Harbor Drive, Red Wing  
Bowling Bar & Grill  
651-388-3597 651-385-8852

**TAP HOUSE**  
BAR & GRILL  
Minnesota

**61 beers on tap!**

Outdoor deck overlooking  
the Mississippi River

**DAILY SPECIALS**

**Burgers**  
(Ground Beef  
Ground Fresh Daily)

**Salads**

**Pizza**

**Broasted Chicken**

**Sandwiches**

Kitchen Open M. T. W. T. Sun 'til 9 p.m.  
Fri. & Sat. 'til 10 p.m.

1530 Old West Main St.  
Red Wing, MN  
651.388.9913

**LIBERTY'S**  
RESTAURANT & LOUNGE

Proud  
Supporter  
of the  
Red Wing  
Collectors  
Society.

Decor of Red Wing Yesteryear

**Welcome Collectors!**  
Open Daily 8 a.m.  
Serving Breakfast,  
Lunch & Dinner  
Since 1975  
Featuring Sandwiches, Pizza,  
Steaks, Seafood, Mexican,  
Italian and American Cuisine.  
Online Menu  
libertysrestaurant.com

**Full Menu Delivery**

**651-388-8877**  
303 W. Third Street  
Downtown Red Wing

**BUY 1  
SHORT-SLEEVED  
SPORT SHIRT  
2ND SHIRT  
50% OFF\***  
\*EQUAL OR LESSER VALUE

**JOSEPHSON'S**  
ESTABLISHED 1878  
215 Bush Street, Red Wing, MN  
651-388-4261  
Store Hours: Mon.-Sat. 9-5, Thurs. 'til 8 PM

## 2015 Convention Attendance Red Wing Collectors By State:

MN..... 576	IN..... 5
WI..... 238	AR..... 4
IA..... 87	KY..... 4
SD..... 48	OK..... 4
IL..... 42	FL..... 4
CA..... 30	AL..... 3
ND..... 30	TN..... 2
MO..... 24	LA..... 2
KS..... 19	NY..... 2
NE..... 17	WA..... 2
AZ..... 15	UT..... 2
MI..... 8	SC..... 2
CO..... 8	NV..... 2
OH..... 6	MT..... 1
TX..... 6	OR..... 1

**TOTAL: 1194**

# The Courtyard Café - Menu

## Red Wing High School – July 7-8, 2016

### THURSDAY, JULY 7

Lunch 11:00 AM - 4:00 PM

Cost: \$6.50

#### Choice of sandwich:

Chicken Salad on Croissant - OR  
Sloppy Joe on Bun. Served with  
a pickle spear.

#### Choice of three side dishes:

Shredded romaine & tomato  
slice, baked beans, potato  
chips, carrot sticks, fruit cup,  
chocolate chip cookie.

Milk, lemonade, or coffee  
included with meal.

### FRIDAY, JULY 8

Lunch 11:00 AM - 1:30 PM

Cost: \$6.50

#### Choice of sandwich:

Pulled Turkey on Bun - OR  
Egg Salad on Croissant.  
Served with a pickle spear.

#### Choice of three side dishes:

Cole slaw, calico beans, potato  
chips, carrot sticks, fruit cup,  
chocolate chip cookie.

Milk, lemonade, or coffee  
included with meal.

### THURSDAY, JULY 7

8:00 AM-4:00 PM

### FRIDAY, JULY 8

8:00 AM-1:30 PM

Assorted drinks ..... \$2.00  
Coffee ..... \$0.75  
Lemonade ..... \$0.75  
Milk..... \$0.75

Breakfast sandwich .. \$2.25  
Cinnamon roll..... \$1.35  
Cookie ..... \$0.65  
Extra side dish ..... \$0.85  
Malt cup ..... \$1.75  
Ice cream bar ..... \$1.75

Winger Volleyball: Auction Concession  
Thursday, July 7 - 4:00-8:00 PM

Winger Volleyball: Show & Sale Concessions  
Saturday, July 9 - 8:00 AM-1:30 PM

*Whimsy's Closet*

A woman's clothing shop  
where the wearable, wonderful  
and whimsical await you!



**25% OFF**  
Red Wing and  
Minnesota necklaces  
July 5 - July 10

**Downtown Red Wing**  
207 Bush St.  
651-388-8275

## Same Location New Look!

Stop in and see the inside  
and outside remodeling.

- Breakfast served all day
- 55 plus special  
*(not valid with other discounts)*
- Delicious dinners
- Rich & Real Cream Pies
- Fantastic Fruit Pies
- Fresh Strawberry Pies
- Scrumptious Cookies
- Mammoth Muffins



Welcome  
Collectors!



812 Withers Harbor Drive • Red Wing • 385-0783  
www.perkinsredwing.com



RED WING  
STONEWARE CO.

Shop Our  
Tent Sale

2016 Ornament and collectible  
will be available

Open 9-5 Mon-Sat  
Weekday Factory Tours 1PM

4909 Moundview Drive Red Wing  
(651) 388-4610



**AL'S ANTIQUE MALL**  
New merchandise arrives almost daily

**20% OFF STOREWIDE**  
July 6-10, 2016

512 PLUM STREET (Across from Salvation Army)  
RED WING, MN • 651-388-0572

Hours: Mon.-Sat. 9am to 5pm; Sun. 10am to 5pm • Extended Convention Hours: 9am to 6pm Thurs. & Fri.  
"Come Join Us in Red Wing" - Al & Cathy Novek

# Museum recreates historic women's luncheon

By Ruth Nerhaugen  
Contributor

In 1952, when Red Wing Potteries was only 74 years old, local women were invited to a luncheon at the prestigious St. James Hotel to get first look at the new dinnerware patterns being manufactured for the 75th anniversary.

They were the first to enjoy Village Green and Capistrano, Country Garden and Tweed-Tex.

Plus they got to hear about the process from William G. Warr Jr., foreman of the decorating department (1949-54) and a designer himself who worked with Belle Kogan and Charles Murphy.

Warr died in 1986 but his story was not forgotten. Not long ago his daughter, Sue McClory from California, sent the Red Wing Collectors Society a collection of materials about her father.

Included was a small newspaper clipping about the women's luncheon.

"As I read it, I thought, 'We need to repeat history and do this again,'" said Robin Wipperling, manager of the Pottery Museum of Red Wing. A committee was

formed and the St. James Hotel joined the project as a major sponsor.

"Affair for Dinnerware," a re-creation of that women's luncheon, was held May 14, 2016, in the hotel's elegant Victorian Dining Room. Seating was limited to the first 70 people to purchase the \$30 tickets.

Local residents loaned dinnerware from their private collections so everyone could dine on Red Wing, plus each table had flowers from Hallstrom Florist in a Red Wing vase. The centerpieces were given as door prizes, and people had an opportunity to bid on platters and other Red Wing art pottery in a silent auction.

Three former dinnerware painters — Doris Gardas, Dorene Pearson and Dolores Florine — visited with the diners — men and women — before lunch.

The dining room was full of stories, and many people shared their Red Wing Pottery connections. A not surprising number of women had received Red Wing dinnerware or bowls for wedding gifts.

Among people sharing their stories was Mark Olson, whose Aunt Elizabeth "Betty" Olson worked in the art department. She may have painted the famous "last plate," he said. Olson brought along some of her



Former dinnerware painters Dolores Florine (left), Dorene Pearson and Doris Gardas (not pictured) talked about their experiences at the pottery before lunch. — Ruth Nerhaugen photos

memorabilia as well, including a book on the demise of the potteries signed by Richard Gillmer.

As participants lunched on wedge salad, wild rice casserole and Clara's bread pudding, two volunteers with expertise spoke.

Todd Avery gave a brief history of stoneware, including the evolution to art pottery and dinnerware. He told the story of the four handpainted lines introduced in the early 1940s — Brittany, Ardennes, Orleans and Normandy — and the design changes brought by Eva Zeisel and Charles Murphy.

John Sagat focused on the evolution of

dinnerware designs, the painting process, how dinnerware lines were named and the impact of foreign competition.

The event was an unqualified success, generating close to \$2,800 for the museum. It will be repeated next year, Wipperling said — on May 13 at the St. James.

For more information about next year's luncheon, contact the museum at 651-327-2220. She also noted that archivist Michelle Weisen is starting to videotape oral histories. They would like to hear from anyone with memories or stories about the industry to share.



Speaker Todd Avery holds a 75th anniversary ash tray.



One table at the luncheon was set with Orleans dinnerware.



Museum Manager Robin Wipperling auctions a Red Wing vase filled with roses at the women's luncheon.

# Join the Convention fun and win Membership and the 2016 Commemorative!



## CROCK HUNT

July 1-9, 2016

**RULES:** The Crock Hunt begins on Friday, July 1. Both Red Wing Collectors Society Members and non-members are eligible to participate in the 2016 RWCS Convention Crock Hunt. Participants must locate each display pictured site during regular business hours to match the business logo and photo. Participants must obtain an employee initials (or other mark chosen by the site) from each site. Winners drawn will have their forms checked to ensure that answers are correct before a prize is awarded. Winners do not need to be present to win.

Completed forms must be brought to the Convention Show and Sale, Saturday, July 9 between 10:30 a.m. and 1:30 p.m. at Red Wing High School.

Participating businesses feature at least one piece of old or new Red Wing pottery in their picture. The business logo is not included in the picture. Both the photo and business logo are printed at random on the Crock Hunt form published in the Convention Supplement, for download at ERWCS.org or at selected site locations.

**EVERYONE INVITED TO PARTICIPATE**  
Bring your form to the High School Saturday during the Show & Sale!

 **Associated Bank**  
222 Bush St.  
Picture # \_\_\_\_\_

 **Red Wing Confectionery**  
323 Main St.  
Picture # \_\_\_\_\_

 **Randys**  
709 Main St.  
Picture # \_\_\_\_\_

 **Goodhue County Historical Society**  
1166 Oak St.  
Picture # \_\_\_\_\_

 **Marie's Underground Grill & Tap House**  
217 Plum St.  
Picture # \_\_\_\_\_

 **Red Wing Brewery**  
1411 Old West Main St.  
Picture # \_\_\_\_\_

 **Liberty's Restaurant**  
303 West 3rd St.  
Picture # \_\_\_\_\_

 **Red Wing Area Chamber of Commerce**  
439 Main St.  
Picture # \_\_\_\_\_

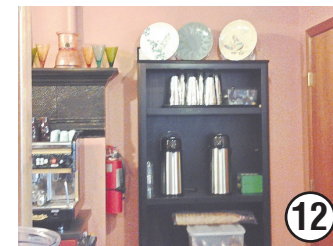
 **St. James Hotel**  
EST. 1875  
406 Main St.  
Picture # \_\_\_\_\_

 **Perkins**  
RESTAURANT & BAKERY  
812 Withers Harbor Dr.  
Picture # \_\_\_\_\_

 **JOSEPHSON'S**  
ESTABLISHED 1878  
215 Bush St.  
Picture # \_\_\_\_\_

 **DeLeon Jewelers**  
Since 1897  
409 Main St.  
Picture # \_\_\_\_\_

 **Hay Creek Valley Campground**  
Old Western SALOON  
31655 Hwy. 58  
Picture # \_\_\_\_\_



Are you a member?  Yes  No

Name: \_\_\_\_\_

Address: \_\_\_\_\_

Phone: \_\_\_\_\_

Email: \_\_\_\_\_

**Visit as many locations as you can. Bring your form to the Show and Sale between 10:30 a.m. to 1:30 p.m. on Saturday, July 9, to be included for drawing(s).**