

2015 DISPLAY ROOM

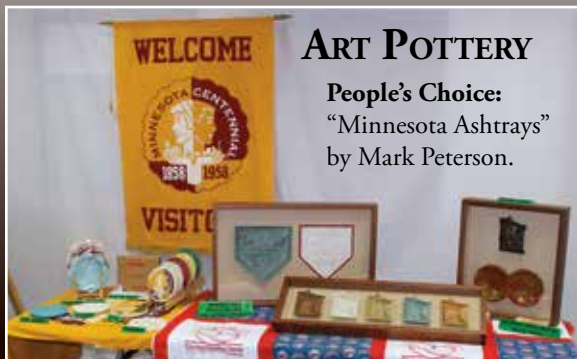
The competition in this year's Convention Display Room was some of the best we've had in several years. Voting was close in every category except for Memorabilia, as there was only one entry in that classification. The results couldn't get any closer in the Dennis Yaeggi Rare Item voting, as the top two items tied for the first time in the club's history. So on behalf of the entire Society, I'd like to thank each displayer for doing such a good job. And a big thanks to Steve Brown for organizing the reunion of the Potters Excursion jugs. Eleven members brought their jug to Convention to celebrate its 100th birthday. It was really cool!

As always, we thank Stacy Wegner and the RWCS Board of Directors for its dedication and support and RWHS Custodial Staff members for their help. If you're interested in displaying next year, please submit a completed contract well in advance of Convention. Remember, displayers are given a Commemorative as a token of appreciation (Rare Item displayers excluded) and all winners are awarded an RWCS Special Commemorative. Make 2016 your year to shine! 🍷

-Laura Beall, RWCS Display Room Chair 605-464-5941 DISPLAY@REDWINGCOLLECTORS.ORG

DENNIS YAEGGI RARE ITEM AWARD

For the first time in the history of the RWCS, there was a tie for the Dennis Yaeggi Rare Item Award! The winners were Gary & Bonnie Tefft for their 40 gallon salt glaze leaf crock and Rick Natynski for a sewer tile stoneware chair. Other rare item displayers: Tim Broetzman, Mark Celotti, Jonathan Braasch and Chris Nielsen.



ART POTTERY

People's Choice:
"Minnesota Ashtrays"
by Mark Peterson.

Other Art Pottery Displays:
"This Lady Needs Another Piece of Red Wing Like a Giraffe Needs a Sore Throat" by Jo Landis.



Best of Show: "Pillin California Pottery" by Wayne & Sue Chapman.

STONEWARE

People's Choice:
"Beautiful Red Wing Albany Slip"
by Lowell & Corinne Reed.

Best of Show: "Red Wing Beehive Jugs"
by Ralph Ryan.



Other Stoneware Displays:
"Straight Sided Water Coolers"
by Tim Broetzman and
"Then and Now" by Steve Johnson.



EXCURSION JUG REUNION

Organized by Steve Brown.



DINNERWARE

People's Choice: "Piecing it Together: Hostessware" by Dennis Nygaard.



Best of Show:
"A Plethora of Platters"
by Glenn Beall.

Other Dinnerware Display:
"Bob White" by Julia Schmidt.



MEMORABILIA

People's Choice and Best of Show: "Red Wing Paper" by Paul Boudin.