



Eva Zeisel

One of this century's
most important
industrial designers

page 9



John Paul Site

One of the area's
first potters

page 12



The First Convention

Where were you on
July 9, 1977?

page 18

T W E N T Y - T H I R D A N N I V E R S A R Y E D I T I O N

RED WING COLLECTORS SOCIETY

Founded 1977

J U L Y 6 , 7 , 8 , 9 , 2 0 0 0 • R E D W I N G , M I N N E S O T A



Celebrate the
Timeless Beauty
of RED WING

Photo courtesy of Doug Frey

A Special Convention Supplement produced by Red Wing Publishing in partnership with the Red Wing Collectors Society

The President's Message

Welcome to the 21st Anniversary Annual Convention of the Red Wing Collectors Society. Inc. Excitement is in the air! This year's convention finds our ever growing society very close to our long held goal of establishing a foundation for the continued growth and development of the Society. The Foundation will be instrumental in helping the Society to accomplish its vision as stated in the Preamble to the Bylaws—the collection and preservation of Red Wing and other American stoneware and pottery.

Work was first begun in this effort years ago by RWCS Treasurer, Jerry Flick, a member of the Vision Committee that originally set the establishment of a foundation as a goal. It has been my privilege and pleasure these last few months to work with the extremely dedicated and hard working current Foundation Committee consisting of Chairperson and newly appointed Interim Treasurer, Jerry Schelske; former Executive Chair, Larry Poterius; former Convention Chair, Diane and Dave Hallstrom; RWCS member, Ron Linde; RWCS Historian, Steve Brown; RWCS member, Margaret Ekblad; and former Membership Chair, John Key. On behalf of the Society, thanks to these individuals for their single mindedness and determination in bringing this very important effort to fruition.

Given the vast of my very special keynote speaker, premiere designer, Eva

Ziesel, back to the home of the Red Wing Pottery, Inc., this 21st Anniversary Red Wing Collectors Convention brings with it more than the usual excitement and participation. Ms. Ziesel's work is in the collections of such museums as the Metropolitan Museum of Art, the Museum of Modern Art, and the Victoria and Albert Museum. The Society, as well as the city of Red Wing, are very fortunate indeed that Ms. Ziesel agreed to participate in our convention. The Town and Country dinnerware line that she designed in 1946 is as popular today as ever.

Another of the very special events of this convention will be the induction of RWCS Treasurer, Jerry Flick, into the RWCS Hall of Fame at the annual business meeting. Having served with five different RWCS presidents since first elected in 1983, there is none more deserving of this highest honor the Society can bestow. Jerry has managed the financial growth of the RWCS treasury from a few dollars handed to him in a paper bag to more than \$500,000 in annual revenues. I know that all of our members will want to be present to personally extend their appreciation to Jerry for his many years of dedicated service.

Despite all of the above mentioned events, this convention will truly prove to be a bittersweet. Celebration brings to a close the many years of dedicated service to the Board of Directors, and to you the members by Commemorative Managers,

Kathy and Larry Roschen. Elected in 1992, their continuous selfless efforts on our behalf have been tireless. The many, many hours of Larry's monumental work on collecting and compiling all of the information for the twentieth anniversary commemorative booklet, "Collecting the Legacy" resulted in the most definitive and important document detailing the history of this Society and its annual conventions. It has truly been my privilege and pleasure to have known and worked on the Board of Directors with Kathy and Larry for the past six years. Their presence will be sorely missed, both personally and professionally.

Also coming to a close this convention is the service of past president, Barney Cline II as an Ex Officio member of the Board of Directors for the last two years. His service to you the members, to the Board, and to me personally has been vital to making a smooth transition from one slate of officers to another. His knowledge, experience, and personal assistance to me as performing my job as president have been invaluable. Having served as Auction Chair from 1988-1991, Barney was elected Vice President in 1991, and assumed the presidency a year later with the untimely death of our dear friend and former president, Dennis Young. In total, Barney has provided the Society with twelve years of leadership and service on the Board. Thank you, Barney. We'll miss! We're forever in your debt.



On behalf of the Society, I extend our thanks to Tom Hinton, of the Red Wing Publishing Company for his work in producing this convention supplement. The supplement has been an important and integral part of convention since its inception in 1985, and Tom is continuing that fine tradition.

As always, I thank the Board of Directors, Business/Convention Manager, Kay Wildhusen, and all of our members for their time, effort, and energies devoted to the goal of the Society. I encourage all of our members to continue to work together to meet the challenges presented by our continued growth as the Society moves into the 21st century.

Have an enjoyable convention!

Carrie Reed, President RWCS

EXTENDED CONVENTION HOURS

OFF STREET PARKING

AL'S ANTIQUE MALL

www.alsantiquemall.com
1314 OLD WEST MAIN STREET
RED WING, MN 55066

(651) 388-0572
Fax: (651) 388-7474
Toll Free: (888) 388-0572
E-mail: al@alsantiquemall.com

Located 1 Block Off Highway 41

12,000 Square Feet Open Daily

Summer: Mon.-Sat. 9-6; Sun. 10-6
Winter: Mon.-Sat. 9-5; Sun. 11-5

"Come Join Us In Red Wing"

Extended Convention Hours

OFF STREET PARKING

EXTENDED CONVENTION HOURS

Welcome to Red Wing!

Celebrating our 114th year!

785 Hallstrom Drive 388-7178
Downtown Floral Shoppe,
313 Bush St. 388-6334

Be sure to stop by our
downtown store at
313 Bush St. and
see our window display.

Dave & Diane Hallstrom

Welcome from the Mayor

Thank you for coming to Red Wing for your annual Red Wing Collectors' Society Convention and as Mayor I would like to extend a warm Red Wing welcome to each of you.

I know you have a very busy schedule, but I do hope you will have time to take in some of the sights in and around Red Wing. There are so many attractions in our little river town for you to enjoy. I would like to mention a new attraction this year and that is our New Aquatic Center in Colvill Park. The Aquatic Center was recently opened and is being enjoyed by all, so please stop by if you get an opportunity.

Of course we will all wish you a very successful convention and hope each of you are able to add your collection of pottery and pottery friends!

Enjoy beautiful Red Wing and come back to visit us often.

Romeo C. Cyr, Mayor

Welcome from the President

Welcome to the year 2000 Annual Red Wing Collectors' Society Convention! Can you believe that the love affair we collectors have with this beautiful city of Red Wing and the pottery and silverware that it produced has resulted in all of us making here for 24 years? Must be true love! My fondest hope would be that some day, somehow, every one of our 1,200 plus members would have the opportunity to experience this city, its people, and our annual convention.

Thanks to the city of Red Wing for your wonderful hospitality and for hosting our convention year after year. Thanks also to the specific organizations, groups, and the many volunteers working tirelessly to make our convention a success. Members, please take the opportunity to extend your personal thanks to this great community as you visit the various business establishments around the city.

On behalf of the Red Wing Collectors Society I extend a very special welcome to our annual convention year after year. Thanks also to the specific organizations, groups, and the many volunteers working tirelessly to make our convention a success. Members, please take the opportunity to extend your personal thanks to this great community as you visit the various business establishments around the city.

Corrinne Reed, President, RWCS

Welcome from the Business Manager

Welcome to Red Wing! This is our first convention in the new millennium, and I am delighted to extend a hearty welcome to members of the Red Wing Collectors' Society.

The planning for this year's convention began last December, and it is a serious occasion to see months of planning come to fruition. We are delighted to have Eva Zeisel as our keynote speaker, and her presence will serve to remind us of the importance of the Society's mission - preserving Red Wing and American pottery.

It is my sincere desire that you enjoy this year's convention, as well as the ambience of the Red Wing community. I look forward to meeting new members and seeing familiar faces!

Kay Wilshusen
Business Manager, RWCS



"The Suite Spot"



Best Western
QUIET HOUSE®
—& SUITES—

RED WING

Best Western Quiet House® & Suites

offer luxury theme suites with whirlpool baths for two. Enjoy the unique swim-loungers, indoor/outdoor pool, complimentary coffee, or just relax and spend a quiet moment at the lobby fireplace.

Choose a Best Western Quiet House® & Suites for your next getaway and find out just how suite a spot it is.

Best Western Reservations
1-800-528-1234
651-388-1577

Make your getaways extra special!

Discover a store that is easy to shop and enjoy, with outstanding selection of sportswear, sweaters and unique gifts. All backed by our famous guarantee of satisfaction.

Don't forget our
Huge Tent Sale
Sept. 14th-Oct. 15th

WINONA

Next to the Pottery
Red Wing, MN
651-388-5738



HAY CREEK VALLEY
Campground
AND

Dressen's
OLD WESTERN
SALOON

Restaurant specialties in
buffalo burgers!

Located 6 Miles South of Red
Wing on State Highway 58
Red Wing, MN 55066
651/388-3998

Bierstube

Food - Liquors

featuring

• Steaks • Snacks
• Specials • Sandwiches
& our specialty
Reubens &
Bratwurst

3 pool tables
3 dart boards

Welcome
Collectors!

Tuesday
Tacos \$1.00

1st Friday
Fish Fry

About the Other Chapters

Rocky Mountain

In 1989 some intrepid Red Wing collectors from Minnesota decided that Colorado south of a Rocky Mountain Chapter. Now "Gophers" got added into the way and today we have approximately 30 interested and involved members. For those interested in field activity consisting of social time, educational presentation, club business, show and tell and, most importantly, desert time. It may be the climate, but we have one of the best desert areas in the country. A summer picnic and Christmas holiday party are added just for fun.

Although Red Wing is our primary focus, the group boasts about related interests and art projects. Jan Carlson, author of "Colorado Pottery," spoke at our April meeting. Gail Pick was a guest speaker at the previous meeting. June 3, a group from our club traveled to Colorado Springs for an antique show and tour of the Van Brickle factory. A self-paced tour through the plant witnessed a pottery throwing class, meals being prepared and served, greenhouse loaded with cacti ready for the hills, applications of glazing and a demonstration with pieces for purchase. Like Red Wing's history, black and white photos depicted the early 1900s working conditions. Fascinating!

Bob Duden, commemorative chairman, continued his annual tradition of producing outstanding pieces with this year's "Gophers on the big" rockslide chapter. A newsletter informs and announces coming meetings and special events. Currently the Colorado History Museum has a display "Colorado Kitchen: A Century of Change" that depicts early art pottery by companies such as Van Brickle, Dunder White, Coors Pottery, Santa Fe and Brecksville.

Dynor Ralston, our current president, Jack

May is Program Chairman, Lori Strala is Secretary/Treasurer, Bob Duden is the Commemorative Chairman and Chris and Tim Brown, Newsletter Communicator.

Nebraska

The Nebraska Yarnstitchers Chapter was chartered in 1997. Our purpose and mission is to research and share the history of pottery in America, to establish a network of collectors, and to encourage the buying, selling, and trading of antiques and pottery, to enhance friendships among collectors, and to recruit new members. We meet five times a year, on the first Saturday in March, June and October, and on Thursday of the RWCS Convention in Red Wing. We also have a December meeting/Christmas party with door, time, and place to be determined at the October meeting which is held in Lincoln, Nebraska.

We have 66 members. Eligibility requires membership in RWCS as well. Annual dues are \$10, payable to the Nebraska Redwings, 1901 Normal Blvd., Suite 203, Lincoln NE 68506-3250. Dues are due at the October meeting and may be paid by December 31 to retain membership for the following year.

Commemorative eligibility requires attendance at two chapter meetings, one of which is held in Nebraska, or attend in lieu one chapter meeting held in Nebraska and complete a Board of Directors approved educational or organizational activity. Members are required to "sign in" at each of our meetings, and with their commemorative order are asked to complete and submit a commemorative qualification statement by December 31 of each year. Each eligible member may purchase one commemorative at the

Chapter's event. The Board of Directors can authorize as many as 1-12 commemorative for each publishing and paid member who orders one, as long as the total dues are received one for each member of the Nebraska chapter. Eight of these extra commemorative are awarded to members at the Nebraska meetings (4 each in October and December) and in March and June of the following year. The average price of these commemorative pieces is one sold at the RWCS convention auction (if chosen that way) decreases the price for the balance of the extra commemorative for that year — which are then offered to those members who didn't purchase quality or one order for that year, who may purchase one provided that they were a paid member of the chapter in the year that the commemorative was made.

Newsletters are published and mailed to members following each meeting to inform members of the time and place for the next meeting, to include the names from the meeting, to potentially recap the activities of the meeting, to provide a forum for educational items, and to make announcements, etc.

1000 Officers are present — Jerry Schuch, vice president — Bob Ralston, Secretary — Sharon Filler, treasurer — Mary Schuch, Committee chairpersons are commemorative — Chuck and Dick Jansen, education — Gail Pick, newsletter/publisher — Barb Filler.

Big Sky

In July we will officially be four years old. Our club is probably one of the smaller local chapters with only 25 members. However, remember that even though Montana is one of the larger states, it has one of the smaller populations. This makes it difficult to have regular meetings, but rather collecting

Red Wing much more productive. Normally we have only two meetings scheduled for the Chapter that coincide with the local antique shows in Billings. The first is usually in early February and the second is usually in late November. Many of our members are in real estates and travel long distances to the antique show in an abbreviated time frame. The Montana chapter is a very lovely knit group that shares a common interest for Red Wing memorabilia and pottery. Many of the men (primarily) are interested in antiques while the women have interests that vary from accessories to demonstrate and pottery. Some of the most serious collectors have a positive for Montana advertising showcasing pieces such as whiskey jugs, bowls, butter jugs, crocks, cooking pots and griddles. There is a fairly large downsizing of such items available from time to time in the local antique shows and auctions.

The Big Sky Chapter has officially produced two commemorative, the first is a miniature of one of the advertising jugs produced by Red Wing for the Montana Liquor Company in Butte, Montana. The second commemorative is a miniature replica of another Red Wing jug produced for the Ladies' Institute in Miles City, Montana, at the present time another miniature advertising commemorative in production and will be distributed to the current members who have pre-ordered them.

Montana is a great state to take your vacation in this summer. Attractions include Yellowstone National Park, Glacier National

Chapters continued on page 6

Wiederholt's
SUPPER CLUB
MESA VILLE, MN

Reservations Phone
651-437-3528 or
507-263-2263

**DINING AT
ITS FINEST!**

Hours:
4:30-10:30 Mon.-Thurs.
4:30-11:30 Fri. & Sat.
12-10 Sunday

**LIVE
ENTERTAINMENT**
Friday & Saturday

15 miles North of Red Wing
on Highway 61


LIBERTY'S
RESTAURANT & LOUNGE
Decor of Red Wing Yesteryear

*Welcome
Collectors!*

Open Daily 8 a.m.
to 11 p.m. Closing

388-8877

3rd & Plum St.
Downtown Red Wing

Quilts
by the falls
Featured Shop
**1999 Quilt
Sampler Magazine**
We Carry the Finest in
100% Cotton Quilting
Fabrics & Homespuns
100% of Patterns & Books
- 16 feet of Notions -
Magazines - Stencils
Needlework Supplies -
Unique Gift Bags & Cards -
Classes - Inspiration
Always Available
Located Downtown
Cannon Falls -
402 W. Main Street
Take Hwy. 10 East off Hwy. #202 South
- Left at stop light - 1 Mi. North
(507) 263-2528
Hours: 9-5 Mon.-Sat.
www.cannonfalls-quilts.com

**CHICKADEE COTTAGE
TEA ROOM & RESTAURANT**
"WHERE HINING TAKES A STEP BACK
TO HOMEWARD AND LOVELY."
— BREAKFAST
— LUNCHEON
— AFTERNOON TEA
Every Sunday 8am to 2pm
Sunday Family Breakfast
Just 46.50
OPEN APRIL 29 THRU OCTOBER 31
7:30 A.M. TO 4 P.M.
CLOSED MONDAYS
317 N. Lakeside Drive
Lake City, MN 55041 (Hwy. 61)
The gray house with the green shutters
651-345-5155
Toll 888-321-5177 Free

Chapters continued from page 5

park, Custer Battlefield National park and Rhyolite Canyon National Recreation Area. Numerous other smaller parks are spread throughout the state.

If your vacation takes you through Billings, please stop and give us a call. We can direct you to local attractions and of course drop you to the antique shops throughout much of Montana.

Happy Hunting!

Craig Bang
Big Sky Chapter RWCS
bigskyrw@redwingarea.com
1557 Timberline Dr.
Billings MT 59102
406-656-2433

Canon Valley

Canon Valley Red Wing Collectors formed in 1987. This is our 13th anniversary year. Our reason is to have fun collecting and sharing Red Wing information. Our fellowship is exchanged with a dinner meeting every month. We meet in Red Wing one month and follow that with a meeting at Canon Falls and one in Norfolk. We are blessed to have many very knowledgeable people in our group. Information is always one of our highlights every meeting. Someone wants to always find something new. We also have a silent auction every meeting which brings out some unusual pieces.

On behalf of the Canon Valley members we hope you have an enjoyable stay in Red Wing and find just the place you were looking for.

President, Bill Schaller - 1949 Pioneer Road, Red Wing, MN 55066
President, Elise - Corral A. Hagg - 19935 County Rd. 8 Blvd., Canon Falls, MN 55009
6015
Treasurer, Nancy Houghton.

Golden State

The Golden State Red Wing Chapter registered as a group of storeware collectors in September of 1986. We were then officially est-

ablished as an official state chapter of The Red Wing Collectors Society at the July 1987 Business meeting in Red Wing. We are a club with 60 members, mostly in Northern California, but we do have members throughout the state, with several in Southern California. Officially we meet four times a year: the 2nd Saturdays in September, December, and March, and the 1st Saturdays in June. Our meetings are usually held in the home of one of our members in Northern California. Occasionally we take a "road trip" to Los Angeles and meet with some of our Southern California members, take in some shops, and do the Rose Bowl or Long Beach Flea Market. Both are excellent occasions to make the trip.

The Golden State Red Wing Chapter produces a commemorative each year for its members. The 1999 piece is a miniature colt's head Apple Cooker Jar. Currently, membership is restricted to California residents only, but we allow consensus membership to members who have moved out of state. Each member family receives our newsletter, which is published just prior to each meeting, and covers this previous business meeting, and items that were brought to the meeting for discussion. We provide complimentary copies to other state chapters and the board of directors. We have had guest speakers on pottery or storeware at our meetings, and we have taken "field trips" to an operating pottery, and to a specialty old manufacturing company.

We take in other projects as well. For the 1998 Red Wing Convention we introduced a glass set, 1,000 piece Red Wing jugo people along with a poster suitable for framing. To purchase the image for the 2000 Red Wing jugo people club members gathered and arranged over 215 pieces of Red Wing, from silk to artware.

There is something for everyone in the pastie, no matter what aspect of Red Wing you collect. Our chapter was asked to produce the "official" Red Wing Collectors Society button, for the 1999 convention. We created a "real" somewhat button that was the talk of the con-

vention, and sold out the first day of sales. We then agreed to produce a limited number of additional real other buttons for sales through the Red Wing Newsletter for members who were unable to attend the convention, but were interested to get a button for their collection through this newsletter. This project required 3 week days, and brought our club membership together for what has turned out to be our best work project ever. What do we have planned for the future you might ask? Watch closely, our word, more to come!

Bruce Cannon of Canon Valley is our current president, Ralph Nelson of Visalia is our vice president, Mike Robinson of Stockton is our secretary/treasurer, and Denise Nichols of Visalia is our historian. We can be reached by mail at: Golden State Red Wing, P.O. Box 694, French Camp, CA 95231; email: nGSRW@redwing.com, and you can visit our web site at: www.rws.org. The meeting schedule and other information is provided on our web site.

If you ever find yourself in SUNNY California in time for one of our meetings, feel free to drop in. Visitation are ALWAYS welcome! If you need information, or the location of our next meeting please call our secretary Mike Robinson at (209) 443-5119 evenings, (800) 705-3913 days or send a FAX to (209) 468-7915.

Mike Robinson
Secretary

Gopher Chapter

The Gopher Chapter is 21 years old and still growing and still here digging for Red Wing! You may see in digging around antique shops, flea markets, auctions or even the dump looking for those Red Wing treasures. We meet monthly in members homes for a short meeting, share and tell, share auction and trade. In August we have a picnic and in December we have a Holiday party which is enjoyed by all. We love sharing our finds and learning more so we try to have educational sessions as often as possible. We

have done a display in the display room for the last several years.

We do have our own commemorative each year which you also received in this. Our auctions are held twice a year, one pottery, dinnerware and collectibles. Most of our members are from around Minnesota and the many areas but we do have members from other states and areas. This year we have had the opportunity to purchase "Gopher Shirts" so look for us wearing the hoagoodly shirts with the Gopher Chapter emblem.

We invite fellow collectors from all areas and interests to join our group and enjoy the fellowship and education we get from other collectors. Look for us wearing our Gopher Chapter name tags during the convention and ask for more information or contact our membership chairman Jay Isgrig at 952-851-1636 or our president Eric Allen at 952-953-3699.

Pete Blue
Gopher Chapter RWCS
rvpete@earthlink.net
4810 County Road #50
Winnetonka, MN 55388
952-953-3699

Iowa Chapter

Founded in 1979, the Iowa Chapter has 200 household memberships representing 350 individual members. Membership in the Chapter entitles one to receive a newsletter published in January and August by co-editors Committee and Council. An annual publication of the chapter members (of those giving permission to have their names listed), and the purchase of an annual commemorative distributed at each spring meeting. Any extra commemorative are mentioned to members attending the fall meeting. The commemorative produced for 2000 was a miniature replica of a Monmouth Pottery Company 3 piece set with the following: Crown, bowl, wine and liquor advertising.

R. Weiss

Chapters continued on page 7

Visit us in Red Wing
July 2 - July 8, 2000



Check Out Our
LIMITED EDITION SPECIALS

Butter
Churns



Rolling
Pins

Banks

Located Beside Ice House Antique Store

Welcome Collectors!

While in Red Wing, stop by the Visitor's Center located on the old Depot at 420 Levee Street, or call 388-4719 for any information on Red Wing.

The Red Wing Area Chamber of Commerce has a limited number of the Historic Red Wing Cherry Band Pitchers available. This 48 ounce pitcher with blue spray handling on the motif and a red & blue Old World Santa, are numbered and manufactured in Red Wing by Red Wing Storeware Co. Call the Chamber at 388-4719 or stop in today!!

RED WING AREA
CHAMBER
of COMMERCE

Chapters continued from page 6

Dealer in Choice Wine and Liquor
Clinton, Iowa

The show meetings per year are held in April, July, and October, with the July meeting being the annual chapter business meeting held at convention at the time assigned for all chapter meetings. Any RWCS member is welcome in the Show Chapter. Dues are paid on an annual basis and are \$10 per household membership (for 2 people). Renewals are due November 1 of each year. We urge anyone who has not yet found a home in any other chapter to join us at our annual chapter business meeting at convention, at single rates, call or email the chapter using the contact information listed below. Current Board members are Corinne Reed, President; Elaine Frances, Vice President; Lowell Reed, Secretary/Treasurer; and Art Holladay, Communicative Chair.

The following is the contact information for the Iowa Chapter:

Corinne Reed, President
Iowa Chapter RWCS
2808 Vista Street
West Des Moines, Iowa 50265
(515) 225-3224
corinnea@iowa.com

Peggy Sound

Founded in May of 1980, the Peggy Sound Chapter is primarily a Western Washington group, 46 members strong and still growing! We meet on Sunday afternoons, four times per year. Our members take turns hosting the meetings in their homes. Refreshments or a meal are fellowshiped before the business meetings, which are generally 1-2 hours in duration.

We have produced a different chapter commemorative each year since our chapter inception. Our very excited about our 2000 commemorative, a miniature "Museum" clock, which is in the works. Our 1999 commemorative was a miniature green Fur Truck cookie jar (which you can see in the museum), and 1998 was a miniature green Katrina cookie jar. Mike Robinson of

California produced these three, along with many of our previous ones. All of our commemorative annual Christmas greetings, include the chapter name, and acknowledge the year issued.

A highlight of our meetings is an educational session, usually about Red Wing products, but not necessarily limited to that. Our members are diversified in their collections and we have recently been presented with information about items in stores as Candelwick glass, Satchi Benoit Pottery, fishing tackle and Harley Davidson motorcycles. Another highlight is a Show & Tell segment, in which the participants all receive a free raffle ticket. The raffle, which is held at the conclusion of each meeting, is for a Red Wing piece donated by the hostesses. All of the proceeds from the raffle ticket sales go into the club treasury.

One of our members, Reg Day, publishes a very informative and interesting meeting newsletter (meeting@peggy.com) newsletter prior to each meeting. You wish to submit as item for our chapter newsletter, please contact Reg Day at story@dayup.net.

For further information about the Peggy Sound Chapter, please contact any of the following:

Kim Tokuda/President
20111 80th Avenue West
Edmonds, WA 98026
getokuda@aol.com
Deli Chernush/Vice-President
Ron Chernush/Treasurer
4819 34th Avenue Ct. NW
Cigar Harbor, WA 98135
Diane Griffin/Secretary
10255 SE 121th Street
Kent, WA 98031
Dgriffin@aol.com

Southwest

The Southwest Redwings was established in 1982 and currently has 40 members. We usually meet on the last Monday of every month except June and July, and include a program speaker or presentation. Our meetings usually include a club raffle, a "bring and brag" session,

and refreshments. Show Birds and other guests are always welcome.

Club sponsored activities include a winter picnic; an antique touring trip (such as the Fort Lowell Show in Tucson), and a Christmas party. For the past two years, our March meeting has been a pot luck "Spring Fling" with other Chapters invited, and for the past five years have met for a meeting in the guest of Pajon at the lovely "Close Quarters" cabin which belongs to members Bill and Joy Cline and is always a memorable trip and meeting.

The Spring Fling for 2000 is set for Saturday, March 24, at the Kent Williamson residence at 101 West Wood Drive, in Phoenix, Arizona, and all Chapters are invited.

Our December Christmas Party meeting which is set for Saturday, December 9, 2000, from 1:00 to 4:00 p.m. at Mary Ann Cline's in Mesa, includes dinner, gift exchange, and distribution of commemorative.

Our Newsletter, "On The Wing," is published 10 times a year. Mary Ann Cline is Editor. Please to contact for membership is Kent Williamson, 101 West Wood Drive, Phoenix AZ 85029-1850, 602/789-0764, e-mail westwin@att.com.

Current officers for 2000 are: President Lucina Schleich, Vice President Beverly Winchell, Secretary Gene Stanley, Treasurer Sally Stanley, and Historian Jim Masters.

Illinois Chapter

The Red Wing Collectors' Society Illinois Chapter is a new chapter. At convention time we will have our 1st year anniversary. We have approximately 72 members from 34 households which include 4 states (Illinois, Wisconsin, Minnesota, Iowa).

We were recognized as a Chapter at the 1999 Convention business meeting in Red Wing. Our member activities include a Spring meeting, RWCS Convention meeting (Joh), and a Fall meeting. These are informal meetings which include a picnic dinner, show and tell, female and trade items, and a business meeting. The membership dues are \$5.00 per mailing address

per year.

We are in the process of putting a newsletter together for our members. The newsletter editor is Yvonne McKoon (Email: yvonne@redwing.com). The Illinois Chapter President is Mary Osterholt from Rockton, Illinois, and Lorraine Osterholt handles the Secretary/Treasurer duties.

For any information regarding membership please contact:

Mary Osterholt, P.O. Box 67, Rockton, IL 61072
815-624-6201
Email: Cstmr@aol.com

Wisconsin

The Wisconsin Chapter has 60 active members. We meet twice a year — once at the convention and once in the fall at various places in Wisconsin. The convention is distributed at the fall meeting.

Pete Proskis

Wisconsin Chapter RWCS
1417 Rapids Trail
Madison, WI 53487
715-325-3715

Michigan Chapter

Michigan chapter is not a very active chapter holding periodic meetings rather than regularly scheduled meetings. We usually meet at Red Wing Mid-Winter Get-Together, Red Wing in July, try to schedule a fall meeting sometime convenient and then have tried to hold a meeting prior to the Christmas holidays which get around our business the very first one.

Mike Zankus was the initial organizer of the chapter.

Membership requirements are MUST be member of National Red Wing Collectors Society, Inc. with current paid up membership. Michigan Chapter dues are \$5.00 per year to help offset costs of postage.

STOP IN AND SEE HOW WE'VE GROWN!!

Red Wing Antique Emporium

Formerly the "Farmer's Store"

Located in beautiful, historic, downtown Red Wing, Minnesota at 420 West Third St.
651-267-0689

Over 180 dealers on 3 levels!
52,000 sq. feet of space
open

Monday thru Saturday 9 am - 7 pm
Sunday 9 am - 5 pm

ALSO

Jordan River Flea Market & consignment shop located below the Emporium indoors

Open Thursday, Friday, Saturday, Sunday

One of North Star's First Pieces

It is thought that the ball-shaped, salt-glazed vessel emerged from the North Star Stoneware Company's first firing in 1892. Owner Glen Wilcox believes it's a one-of-a-kind. He won't even venture a guess of its value, but it predates everything he's seen in the pottery books. Many people suggested that he should sell it on the Internet, but instead, he donated the piece to the Goodhue County Historical Society where it is on permanent loan.

"It's true that my children could enjoy it as being something their dad once had, but the interest to Red Wing came first," Wilcox said during his brief stop at the museum. "The proper place for it was here."

When Wilcox was growing up on Red Wings College Hill during the 1940's, the pottery industry touched nearly everyone's life. His best friend's father was a mold maker and Wilcox himself scrounged for treasures in the pottery dump.

As a boy, Wilcox admired the vessel he saw during frequent visits to the home of his neighbor, A.J. Lora, a Canadian veterinarian who settled in Red Wing. Lora was among the dignitaries at the North Star Dedication ceremony. Each received a jug. "To my knowledge, this is



Wilcox continued on page 14

SUBWAY
**Stop in for
 breakfast,
 and get
 your lunch
 to go!**

Hours
 Mon-Tue-Wed-Thur
 8 am to 12 am
 Fri-Sat
 8 am to 2 am
 Sun
 8 am to 10 pm

Located 926 Main St.
388-7827

**What:
 Stoneware
 Sale**

Consisting of
 Red Wing,
 Blue/White and
 miscellaneous
 stoneware in
 addition to Red Wing
 memorabilia

Who:
 Gail Peck
 Dan DePasquale

Where:
 Super 8 Motel
 Conference Room
 (Pool Entrance)

When:
 Wednesday, July 5,
 8am to 4pm
 Thursday, July 6,
 8am to 12 noon

**Red Wing
 CORNER DRUG**

*"Your film and
 photo finishing
 headquarters"*

"Service with a smile"
 Third & Bush Streets,
 Red Wing

Phone 388-3521

Open Seven Days a Week

**4th Street
 ANTIQUES**

*Welcome
 Collectors!*

106 South 4th Street
 Cannon Falls,
 MN 55009

*Come and see
 our general line
 of antiques*

20 Minutes West of
 Red Wing on #19

507-263-7249

Eva Zeisel at 93 — Living Proof That Good Design is Ageless

Just as Red Wing Pottery lives on through the thousands of collectors who celebrate its lines, it's also kept alive through the vibrant career of Eva Zeisel. Zeisel, 93, has kept her love for

pottery design alive for 75 years. One of this century's most important industrial designers, she created a number of pieces for Red Wing Pottery in the 1940's, including the popular Town and Country line, which has recently been reproduced by the Metropolitan Museum of art.

Zeisel's return to Red Wing promises to be a highlight of the twenty-third anniversary convention.

Her life has been a testament to the philosophy she's embraced for almost a century: to live in the moment and to believe in pure form in all that you do. Her career is filled with fits, and as she entered a time when most people consider slowing down, she was just getting going. She was one of the first to offer earthenware with interchangeable colored pieces so buyers could create their own unique sets. Her exciting dinnerware from the 1940's and 1950's created a stir in the design world as it made its way into homes across the globe. The Town & Country salt and pepper shakers are her most recognized design; better known as *shmoos*, these whimsical pieces, shaped like the quirky Al Capp cartoon characters, seem to bend towards each other as though they might be shaking a secret.

But Zeisel's talent is far from a secret. She continues to make headlines in the design world as she explores new areas. She's recently introduced a line of

ceramic fish tiles that interlock for a delightful yet very modern effect. Furniture, created for easy assembly of wood that fits snugly together, has also been a recent brainchild. But the



Photo courtesy of Deag Way ©1998

Metropolitan Museum's announcement last year that they were bringing the Town and Country line back to life

brought the magic of Red Wing Pottery to the forefront once again. The informal dinnerware was one of Zeisel's most exciting designs, and it hit the country by storm when the brightly colored and robust earthenware was introduced. Zeisel has described it as "sort of Greenwich Village" because of its bold, modern and oddly shaped pieces, which came in five interchangeable colors and didn't quite sit absolutely flat on the table. Always challenging the standard, she even encouraged the use of different colors for the lids of the vessels.

Zeisel insists that she's playing, not creating. It's probably one of the most difficult concepts one can learn, but when an artist can embrace the idea of playing with such unbridled enthusiasm, the results are form in its purest state. The gentle curves that mark her work show her to be a Modernist in the simplest form. Her designs reflect a spirit of playfulness that endears users to objects. Her choice to steer away from cold geometric shapes in favor of



©1999 Zakaria Dineen

held jobs she loved, and she's still going strong. She's worked for factories and small ceramic shops in three continents starting in her native Hungary when she was 18 years old. She worked in factories and small shops learning the trade before spending 16 months and her 30th birthday in a Soviet prison cell accused of war crimes. She escaped the German invasion in 1937 and made her way with her husband, lawyer and sociologist Hans Zeisel, to New York, where she still maintains an apartment on the Upper West Side. She also spends time in her home in the Midwest in upstate New York. Zeisel says she has fond memories of Red Wing, even though she enjoyed just one short visit many years ago. She tells of a lovely man from the pottery who took her fishing in the Mississippi River. She says she caught a big catfish and she was quite excited about it, but that her guide threw the fish back. When she asked why, she was told that they were only fishing for "elegant" fish, and that catfish were not elegant.

The timeless beauty of Red Wing Pottery lives on as a testament to the growing value of its pieces as well as the growing numbers of collectors who gather to enjoy the lines. The new Town and Country line through the Metropolitan Museum only solidifies what collectors have known for years: this dinnerware marked a time in our history of great change, one that will live on for generations to come.



Photo courtesy of Deag Way ©1998

gentle curves that tempt users to touch made her name a household word. She was the one that made topos look a little sexy, and creamers seem to dance across the table. And she created the design with the intent to reproduce them efficiently and inexpensively by machine for the masses to enjoy.

She was a teacher, she's written important books, she raised a family, she

Town and Country

These smart, modern dishes are by the famous designer, Eva Zeisel. They come in various colors. The charming floral cloth is a softening foil for the dishes' simple lines. Pot, sugar, and creamer, \$4.25.

Cloth.....	\$7.50
Napkin.....	20
10 1/2" dinner plate.....	1.00
8" metallic plate.....	.60
Cup and saucer.....	1.00
Butter plate.....	.40
Tumbler.....	.50

Place setting

\$11.20

Education Day — Friday, July 7, 2000

Educational Seminars Investing in Redwing

Byron Gunderson
Session I, 10:00 am, Room H201
Session II, 11:00 am, Room H201
Byron Gunderson has collected Red Wing for over 25 years. He has purchased everything and anything to do with Red Wing. In those years he has made, pretty much, every mistake a collector can make. Now hopefully graduated from the "school of hard knocks" he shares his knowledge, research, and caveats with the world. Currently much of his pottery

resides in the basement, safe from his little son Matthew, who has yet to learn that Red Wing is not a throw toy.
The value of Red Wing has steadily increased since the first Red Wing Collectors Convention, 23 years ago. How does purchasing Red Wing stack up as a serious investment opportunity? This and other related topics will be discussed because Red Wing has become, over the years, more than just a casual collectible.

Protecting and Managing your Red Wing Collection

Larry Peterson
Session I, 10:00 a.m., Room H201
Session II, 11:00 a.m., Room H201
Larry is a Charter Member of the Red Wing Collectors Society, has been the Educational Chairperson, and has been on the Board of Directors.

He has been involved in every convention since the beginning by being a speaker, doing displays, or giving seminars. He is a member of the society's Hall of Fame. Two of the books that he has co-authored are RED WING STONWARE and RED WING COLLECTIBLES. He owns the shop called Larry's Jugs that specializes in the stoneware and art pottery of Red Wing, located on Wilkinson Street in Red Wing, Minnesota.

Larry enjoys sharing his knowledge and his experiences of over 30 years of collecting Red Wing. He has been in real estate all of his career, and is Senior Vice President of Edina Realty.

Most people do not realize the true value of their collections. Like any investment, it is wise to inventory, possibly insure it, and to have a directed goal for your collection, including planned buying and selling. Larry will talk about knowing what you have, appreciating what you have, protecting and creating a direction by constantly fine tuning what you have created, and how to decide what you want to ultimately do with your collection.

A Kids View of Red Wing "Rated G"

Wendy Callicot & Sue Jones
Session V, 2:30 p.m., Room H209
Wendy Callicot is RWCS Vice President and Sue Jones is RWCS Secretary. They have teamed up to do a first time kids only seminar. We hope this will be an annual event!
The future of RWCS lies with the future generation of collectors. This seminar is designed for kids to learn the art of collecting Red Wing from Salt Glaze to Dinnerware. A hands on learning experience! Kids will learn to identify different Red Wing markings. They will also have a chance to work directly with clay and form their own creation.

Ebay Auctions - What to look for, how to secure and win your item.

Al Kohlman
Session III, 12:30 p.m., Room H201
Al Kohlman and his wife Stefanie live in Madison, WI. We have four children and one granddaughter. I have been employed by the state of WI for 31 years. I have been collecting RW stoneware for 20 years with my favorites being beehive jugs, ice water and churns. In the past 6 years, I have come to love salt glaze. Collecting stoneware for me has been at times both the alleviation of tension from work and the next step to insanity.
In this seminar you will learn more about Ebay and how to be a successful bidder.

Art Pottery

Ray Reiss
Session V, 2:30 p.m., H206-7
Come gather round the computer as Ray shows more art pottery pictures.
He has been an avid collector for over 20 years. He owns a commercial photography studio in Chicago. Ray Reiss is the author and publisher of *Red Wing Art Pottery Made for Rumrill, Red Wing Dinnerware Price and Identification Guide and Red Wing Art Pottery Two*.

Fondoso Dinnerware and Beginning a Dinnerware Collection

Monica Keding
Session III, 12:30 p.m., Room H202
I have been a Red Wing Collector for over 12 years. I collect stoneware, art pottery and Fondoso. During convention week, I am a Larry's Jugs "groupie". Collecting is a family affair, my daughter, Jen, is a first rate collector in her own right. My daughter-in-law, dad and two sisters are also collectors. Convention week is so much fun. We look forward to the next "fix".
Come and discuss Fondoso Dinnerware. Fondoso

is one of my heart's favorites in my collection. I have been collecting Fondoso for years and am still on the hunt for the last few elusive pieces! The latter part of the class will be devoted to beginning a dinnerware collection. What are you eating off of on special occasions?

Collecting Illinois Pottery and Stoneware

Mark Cellotti
Session I, 10:00 a.m., Room H205
Session V, 2:30 p.m., Room H205
Mark Cellotti has been a show dealer since 1976. He joined in RWCS in 1978 and has been a member of COPIIS (Collectors of Illinois Stoneware) since the 1980's. He has collected pottery and stoneware from Canada and America for more than 20 years and has an extensive library of stoneware books, letters and original catalogs.

This is a brief history of Illinois companies and products. Everything Red Wing made was also copied or made by Western Stoneware. Many of these products are available in all parts of the country, sometimes at very reasonable prices when compared to Red Wing products. Also discussed will be some interesting things to collect and ways to identify who made these products.

Lids - The Finishing Touch

Con Short
Session I, 10:00 a.m., H209
Session IV, 1:30 p.m., H209
Con Short is the oldest member of his Red Wing collecting family. His wife Sandy and three children have done this for over 25 years and the end is not in sight! Salt glaze, stoneware, dinnerware, art pottery and now cobalt, orange and yellow pieces they've loved it all. The house is full, but they are still looking for more. It's called obsessive compulsive!
A lid fetish? You bet!! What is more fun than owning a crack or water cooler and then finding the correct lid for it? Come hear Con expound and see a few slides. See examples of reproduction and non RW lids.

Stoneware Animals of Red Wing

Con Short
Session II, 11:00 a.m., H209
Con and Sandy bought their first stoneware animal in 1979. The hunt has continued to this day and again, sheep, sheep and pigs are displayed in their house. Come see, feel and hear about stoneware animals that are 100 years old.

Rumrill Glazes

Ron Linde
Session III, 12:30 p.m., Room H206-7
Session IV, 1:30 p.m., Room H206-7
Ron Linde will speak about the various glazes that were used on Rumrill pottery in the 1930s. He joined the Red Wing Collectors Society in 1981 and is a Life Member of the American Art Pottery Association. He was president of the Minnesota Art Pottery Association for five years.

For twenty-six years Ron has collected Midwestern stoneware, Rumrill, Red Wing, Haeger, and other art ware. He has presented educational seminars at the past eleven RWCS conventions and has written several articles about his research and interviews. He has won display awards at the past ten RWCS summer conventions.

In addition to the RWCS, AAPA, and MAPA, Ron is a member of the UHL Collectors Society, the

Haeger Pottery Collectors Association, Collectors of Illinois Pottery and Stoneware, and the North Dakota Pottery Collectors.

Ron is an ophthalmologist who practices in Northfield, Minnesota.

Red Wing Mini Jugs

Chris Osterholz
Session I, 10:00 a.m., Room H210
Session III, 12:30 p.m., Room H210
I have been collecting Red Wing Stoneware at the different antique shops and shows in the Midwest for some time. I've collected various things over the years but I enjoy collecting Red Wing advertising mini jugs and advertising mugs the most.

This summer I will be presenting a new seminar on Red Wing Mini Jugs. The focus will be the 1/4 pint and smaller jugs with advertising. The goal of the presentation will be to show rare and unusual Red Wing mini jugs, as well as discuss the different mini jugs Red Wing produced. Any questions about mini jugs, despite the manufacturer, can be answered at the seminar.

Advertising Stoneware Mugs

Chris Osterholz
Session IV, 1:30 p.m., Room H210
I will also be hosting a past seminar called Advertising Stoneware Mugs, on what different advertisements can be found on mugs. Most of the mugs talked about will be Red Wing, but Western and other stoneware companies will be shown also. The presentation will show what can be found for various advertising mugs and identify the companies that produced them. Any mugs or pictures of mugs, that you would like more information about or questions answered, please bring them along.

Collecting by Color - Part III

Deanna Juergens
Session II, 11:00 a.m., Room H202
Session IV, 1:30 p.m., Room H202
Deanna, her husband Jay, and their children have been members of RWCS since 1983. The daughter of former Red Wing police captain "Oola" Anderson, Deanna has a fond memory of receiving her first piece of Red Wing pottery. It was a white bird, which her father brought her when she was about 4 years old. Years later Deanna collected pieces she remembered from her childhood home. Her collecting became more focused when she was repeatedly drawn to her favorite color, burgundy.

Why did she choose burgundy? Everyone is born with an inclination toward certain colors. We are drawn to our favorite colors even when collecting - such as Red Wing art pottery. Deanna's slide presentation will show collections of a variety of Red Wing colors. This year several additional collectors have graciously allowed her to photograph their collections. For each of these collectors there is no better color than the one they collect. Along with the slides, Deanna will be able to share some of the tales told to her by the collectors.

Deanna is the secretary for the Gopher Chapter and is a member of the Minnesota Art Pottery Association.

Advertising Stoneware

Dave Kuffel
Session I, 10:00 a.m., Room H206-7
Session II, 11:00 a.m., Room H206-7
I primarily collect beehive jugs, crocks and butter jars with advertising on them. Researching the history

of the advertiser usually ends up in an interesting story. In addition to collecting stoneware, I am also interested in wooden bodied automobiles (woodie wagons) and have acquired a new appreciation for Arts and Crafts era furniture. With the new interest in Mission furniture came a new appreciation for some of Red Wing's art pottery. And if I had a summer home, Round Up dinnerware would certainly be on the table.

This is my 21st year coming to Red Wing in July and attending this convention. The excitement continues. Adding pieces to your collection will increase the value of your collection and, hopefully, prove to be a wise investment. Adding friends with similar interests to your collection will add value to the collector (you) and certainly prove to be a wise investment.

More Red Wing Art Pottery Animals

Jennifer Keding
Session IV, 1:30 p.m., Room H203
Session V, 2:30 p.m., Room H203
I've been collecting Red Wing for fourteen years, since I was nine years old. My Mother and I became interested in RW after receiving an ugly, but interesting vase from my Great-Grandma. We soon discovered the wide variety of RW and started to branch out. Without educational material or any idea about what I was getting into, I started to focus on RW pottery animals. It was the perfect thing for me to collect since I could easily find them for under \$10. (I would usually pass them up if they were more than that.) A few years later we joined the RWCS and discovered what we had gotten ourselves into. Obviously a lot has changed in the last fourteen years but it's been a fun and interesting adventure.

The RV pottery animal seminar is going to help the participants be able to recognize RW animals and their reproductions. I will discuss when some of the animals were made, what colors they are found in, the most popular colors, hardest to find, markings, etc. I will be showing pictures and overheads of my collection and also actual pieces. I will have educational material to look at and information on where to get copies.

Brushware - Marked and Unmarked

Bob Cox
Session I, 10:00 am., Room H204
Session IV, 1:30 p.m., Room H204
Bob Cox has been collecting for 20 years. Since he is now retired he has time to add to his extensive collection! Bob will bring several pieces of brushware to show and use as examples for his seminar.

The Stoneware Dumps of Red Wing

Dennis Nygaard
Session IV, 1:30 p.m., Room H201
Session V, 2:30 p.m., Room H201
Dennis Nygaard is a long time member of the Red Wing Collectors Society and the Collectors of Illinois Pottery and Stoneware. He has been digging in the stoneware dumps of Red Wing for 20 years and continues to do so as long as the dumps are accessible. Dennis also has been collecting stoneware fruit jars for about 20 years. Recently, he has been researching and collecting the pottery of New Brighton, PA with special interest in its competition with Red Wing. Dennis lives in Hastings, MN with his wife Virginia and for the last five years has been "Mr. Mom" to their 3 boys ages 7, 8, and 12.

Dennis will discuss his experiences of digging at the dumps used by Red Wing's stoneware industry. Through pictures and samples, he will show what can

be found in the dump, and discuss what can be learned from these finds. There will be some old slides and old finds represented, as well as recent finds of the last year. There will be something here for the beginner and for the advanced collector alike.

Red Wing Stoneware Pitchers

Gail Peck
Session III, 12:30 p.m., Room H205
Session IV, 1:30 p.m., Room H205
Gail's interest in Red Wing stoneware began nearly thirty years ago without her knowing it. Many of the crocks purchased then at auction because of their beauty later proved to be Red Wing. When the first information on Red Wing items (and the collecting thereof) became available in 1976 with Lyndon Viel's *Antique Trader* article and in 1977 with his *Clay Giants* her "interest" turned to "passion". This enthusiasm has been apparent in her many previous seminar presentations and Newsletter articles; charter RWCS membership; duties as the first Education chairperson and creator of Education Day at the convention; and co-authoring of *Red Wing Stoneware and Red Wing Collectibles*.

Kitchenware, and pitchers in particular, have long been Gail's favorite Red Wing pieces. Their function, beauty and variety have held her interest all these many years. Too, previously unknown examples continued to surface even to this day which makes the hunt all the more challenging. This seminar will focus, therefore, on the many possibilities open to a pitcher enthusiast. Slides and commentary will highlight and explore this exciting and appealing collectible.

Hobby Shop/Red Wing Art Pottery

Larry Seehusen
Session V, 2:30 p.m., Room H202
Larry Seehusen bought his first piece of Red Wing at an auction in 1982. He was waving at someone! He is retired from the Air National Guard. Larry and his wife, Karen have an antique shop in their home. They specialize in Red Wing, Shawnee and Royal Copley. They collect Red Wing and Rosemeade.
During this seminar specializing in art pottery, you will have an opportunity to experience all the different art pottery Red Wing made and the pottery made by hobby shops, art classes and other companies from Red Wing molds. Larry will have real Red Wing and reproduction pieces for you to feel and compare.

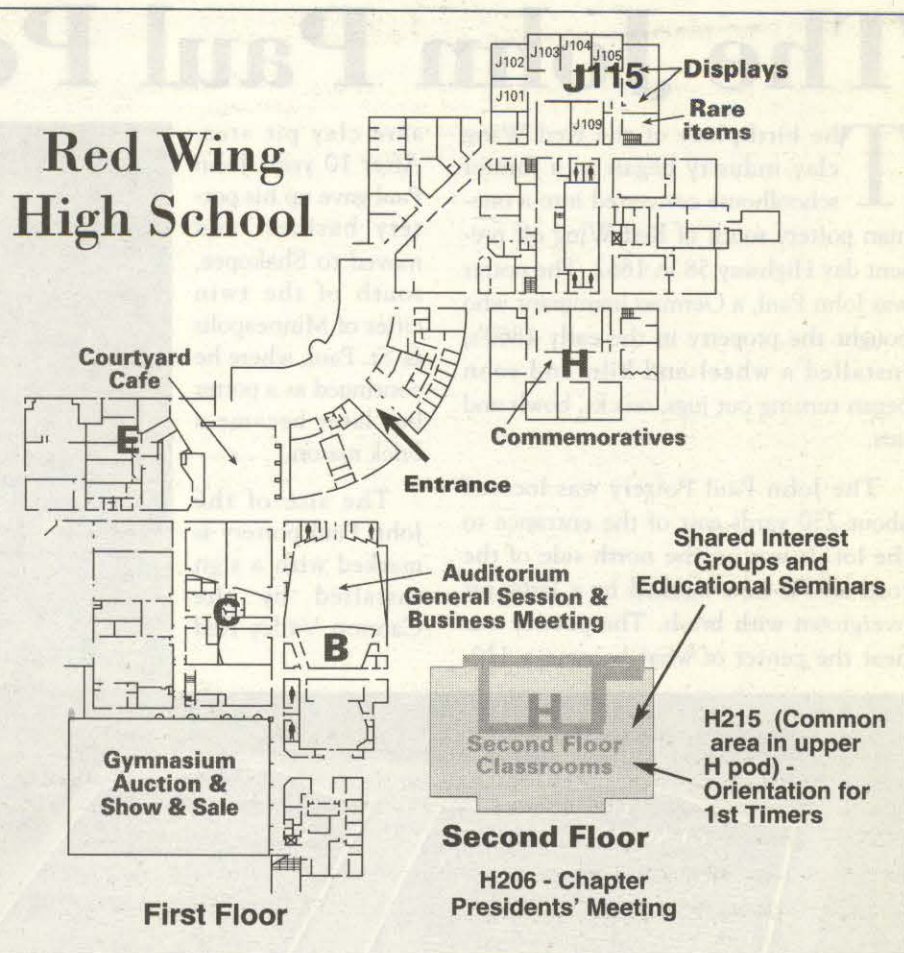
Red Wing Memorabilia

Session II, 10:00 a.m., Room H204
Session III, 12:30 p.m., Room H204
Bob Bremer
I grew up living near the pottery on West 3rd Street across the street from the present sales room. My summers were spent being a sidewalk superintendent at the pottery. I started collecting memorabilia around 1987. At that time I collected mostly postcards and like everyone else, branched out from there.

The seminar will show my postcard collection, plus groupings from the RW milk industry, brewery, Fredrick & Kemp, and general items from around Red Wing.

Dave Hallstrom

Dave has been collecting Red Wing for over 20 years. His collecting interests in the early years have spanned from his first love of stoneware to art pottery, souvenirs and memorabilia. Being a Red Wing native and living in Red Wing all his life, collecting and preserving pieces of Red Wing history has been a natural



al obsession and hobby.

Dave and his wife Diane chaired the RWCS Convention from 1990 to 1997, he has been a Past President of the Cannon Valley Collectors Club, and is now serving on the Board of Directors for the Goodhue County Historical Society. He also was chairman of the Red Wing Heritage Preservation Commission for 6 years. Currently he is working on the oral history project for the RWCS and also the RWCS foundation committee.

When not hunting for Red Wing, Dave and Diane own and operate Hallstrom's Florist & Greenhouses, a 4th generation family business.

Collecting memorabilia from Red Wing adds yet another dimension to your collection. This slide presentation will show you different avenues you can take while on the search to enhance your collection. Samples of topics will be Red Wing Milling Co., Liquor and Beer Companies, Red Wing Shoe Co., Post Cards, Souvenir China and Custard Glass, Boxes, Spoons, Paper items, etc. Everything and anything relating to Red Wing, MN!

Stoneware 101

Chuck French
Session I, 10:00 a.m., Room H203
Session II, 11:00 a.m., Room H203
Session III, 12:30 p.m., Room H203
My father used to say, "Why did you bring that junk home?" That "junk" turned out to be jars with ski ovals, bottom signed Minnesota jugs or unusual butter crocks. Never was more than two dollars spent at auction for that stoneware. But that was "back then".

Since the early 1960's college, marriage, teaching, children and children's marriages and oh, horrors... retirement... sort of. And now membership in RWCS... attendance at scores of auctions and a stoneware collection of over 125 pieces.

Stoneware 101: A beginner's guide to identifying Red Wing stoneware. Ten to twelve pieces of unsigned and/or unusual stoneware will be available. We'll look at specific characteristics that make them Red Wing and draw generalizations to describe Red Wing stoneware. A hand-out will be provided.

Share Your Treasure

We would like to extend a personal invitation to you during the RWCS convention. You are invited to stop by and share your favorite Red Wing story or show your treasured Red Wing item. This is a great opportunity to meet the Editors of the Collectors Society Newsletter and share your thoughts. Your Red Wing experience may end up in a future edition of the RWCS newsletter.

Cindy and Gail will be located in room C103 on Thursday, July 7 from 9 a.m. until 10:15 a.m. and again from noon until 3:30 p.m.

We look forward to seeing you in person at the convention!

Education Seminars – Friday, July 7

	Room H201	Room H202	Room H203	Room H204	Room H205	Room H206-7	Room H209	Room H 210
Session I 10:00-10:50	Investing in RW/Managing Your Collection Byron Gunderson Larry Peterson	Art Pottery Identification	Stoneware 101 Chuck French	Brushware, the Marked & Unmarked Bob Cox	Illinois Pottery & Western Stoneware Mark Cellotti	Advertising Stoneware Dave Kuffel	Lids, the Finishing Touch Con Short	Red Wing Mini Jugs Chris Osterholz
Session II 11:00-11:50	Investing in RW/Managing Your Collection Byron Gunderson Larry Peterson	Collecting by Color Part III Deanna Juergens	Stoneware 101 Chuck French	Red Wing Memorabilia Bob Bremer Dave Hallstrom	Eva Zeisel in Auditorium	Advertising Stoneware Dave Kuffel	Stoneware Animals Con Short	
Session III 12:30-1:20	Ebay Auctions: What to look for, how to secure & win your item Al Kohlman	"Fondoso" Dinnerware & Beg. A Dinnerware Collection Monica Keding	Stoneware 101 Chuck French	Red Wing Memorabilia Bob Bremer Dave Hallstrom	Red Wing Stoneware Pitchers Gail Peck	Rumrill Glazes Ron Linde	Stoneware Identification Con Short	Red Wing Mini Jugs Chris Osterholz
Session IV 1:30-2:20	The Stoneware Dumps of Red Wing Dennis Nygaard	Collecting by Color Part III Deanna Juergens	More Red Wing Art Pottery Animals Jennifer Keding	Brushware, the Marked & Unmarked Bob Cox	Red Wing Stoneware Pitchers Gail Peck	Rumrill Glazes Ron Linde	Lids - the Finishing Touch Con Short	Advertising Stoneware Mugs Chris Osterholz
Session V 2:30-3:20	The Stoneware Dumps of Red Wing Dennis Nygaard	Hobby Shop Red Wing Art Pottery Larry Seehusen	More Red Wing Art Pottery Animals Jennifer Keding	Dinnerware Identification	Illinois Pottery & Western Stoneware Mark Cellotti	Art Pottery Ray Reiss	A Kids View of Red Wing Wendy Callicot Sue Jones	

Shared Interest Groups, Thurs. July 6, 2000

Come join in the fun of exchanging information, photos, and experiences with other members who collect your same interests. You can participate in group discussion if you would like, or just sit back and look at others collections. This is a great time to network with fellow members who have the same interests as you. Enjoy!

	H204	H205	H206-7	H209	H210
Session A 1:00 - 1:45	Animal Figurines	Teapots & Pitchers	Salt Glaze	Ink Stamped Pottery	Lamps
Session B 2:00 - 2:45	Web Site	Jugs	Advertising	Nokomis	Kitchenware
Session C 3:00 - 3:45	Bottom Marks & Side Stamps	Rumrill	Dinnerware	Collecting by Color	Cookie Jars

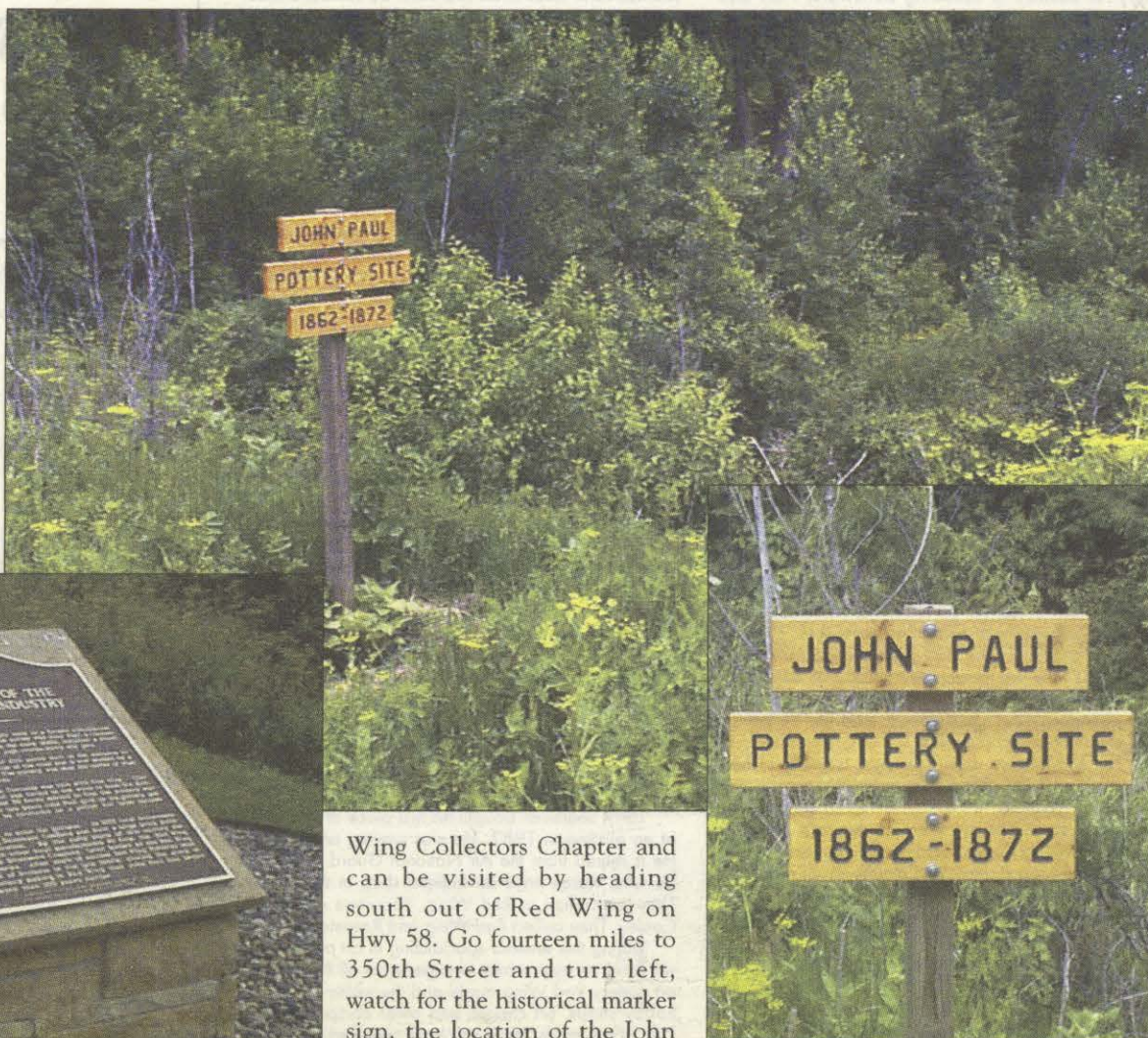
The John Paul Pottery Site

The birthplace of the Red Wing clay industry began in a former schoolhouse converted into a one-man pottery south of Red Wing off present day Highway 58 in 1862. The potter was John Paul, a German immigrant who bought the property in the early 1860's, installed a wheel and kiln and soon began turning out jugs, crocks, bowls and jars.

The John Paul Pottery was located about 250 yards east of the entrance to the lot. It was on the north side of the road and is now marked by a large pit overgrown with brush. The pottery was near the center of what became a 320-

acre clay pit area. After 10 years John Paul gave up his pottery business and moved to Shakopee, south of the twin cities of Minneapolis & St. Paul, where he continued as a potter but later became a brick mason.

The site of the John Paul pottery is marked with a sign installed by the Cannon Valley Red



Wing Collectors Chapter and can be visited by heading south out of Red Wing on Hwy 58. Go fourteen miles to 350th Street and turn left, watch for the historical marker sign, the location of the John Paul Pottery is 250 yards east of the Claybank Pits / John Paul Historical Markers.

Thanks to John Schwartau

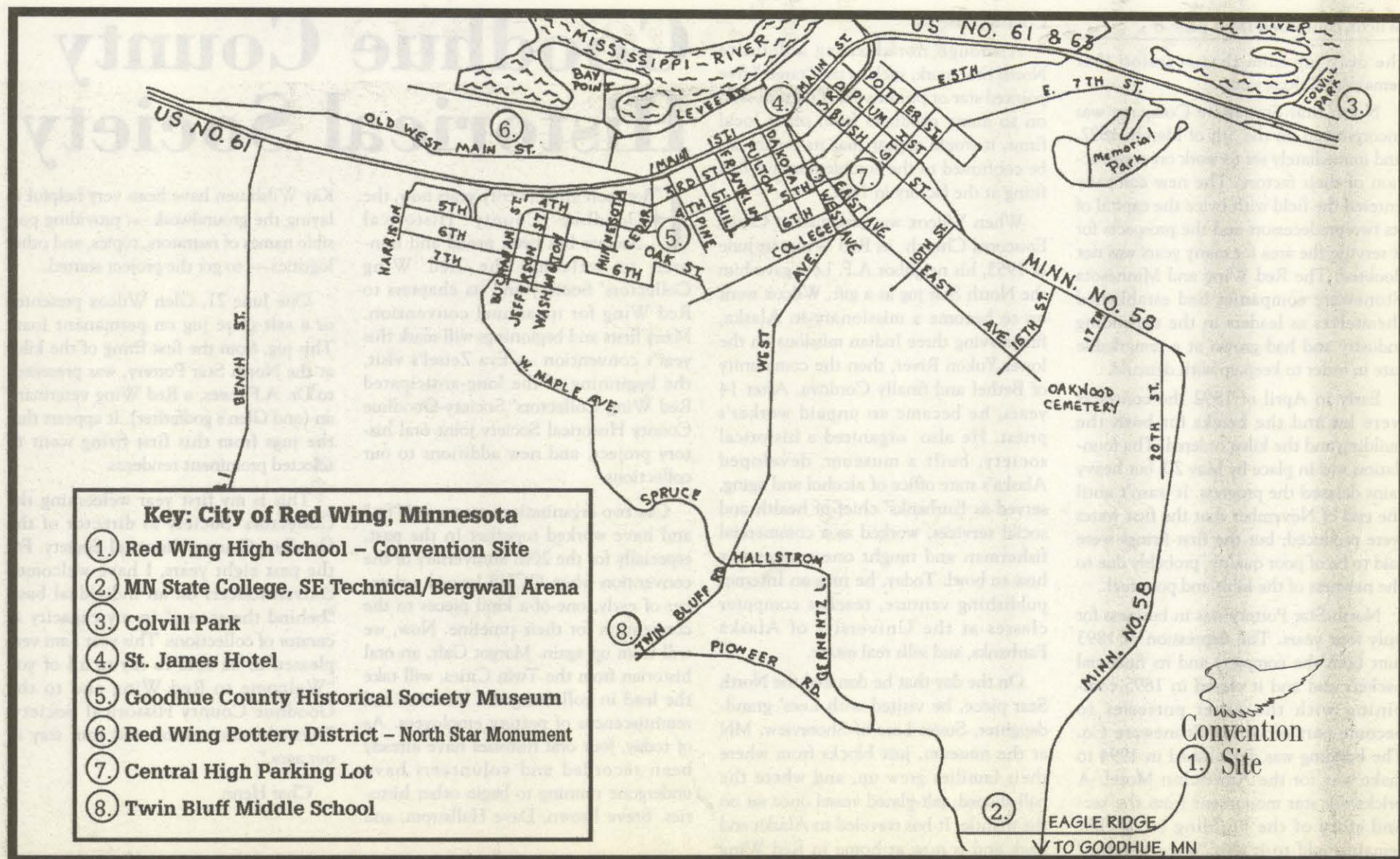
of the Cannon Valley Red Wing collectors Chapter for his suggestion of the John Paul site story and for sharing his research information.

Red Wing Collectors Society Commemoratives

Year	Description	No.	Cost	Year	Description	No.	Cost
1977	Crock	250	\$7.50	1989	Gray Line Pitcher	2,700	12.00
1978	Jug	350	4.00	1990	Fancy Jug	3,550	12.00
1979	Churn	400	10.00	1991	Pantry Jar	3,560	12.00
1980	Bowl	400	10.00	1992	North Star Jug	4,260	15.00
1981	Min. Jug	750	8.00	1993	Buttermilk Feeder	4,820	15.00
1982	Mug	697	10.00	1994	20# Butter Crock	5,660	15.00
1983	Canning Jar	1,026	12.00	1995	Giraffe Planter	6,186	20.00
1984	Leaf Water Cooler	1,161	12.00	1996	Gray Line Cookie Jar	7,175	20.00
1985	#6 Ice Water Cooler	1,750	12.00	1997	20# Salt Glazed Crock	7,508	30.00
1986	Acid Pitcher	1,982	12.00	1998	Blue Iris Pitcher	7,564	20.00
1987	Red Wing, Wing	2,500	12.00	1999	5 Gal. Cover Weight	7,444	20.00
1988	Plate	2,550	12.00				

RWCS membership by State

Canada	27	Montana	90
Alaska	13	N. Carolina	21
Alabama	11	N. Dakota	206
Arkansas	17	Nebraska	266
Arizona	87	New Hampshire	4
California	187	New Jersey	9
Colorado	99	New Mexico	15
Connecticut	7	New York	17
Delaware	1	Nevada	11
Florida	57	Ohio	56
Georgia	21	Oklahoma	28
Hawaii	1	Oregon	69
Iowa	765	Pennsylvania	24
Idaho	32	S. Dakota	252
Illinois	765	Tennessee	26
Indiana	78	Texas	70
Kansas	189	Utah	23
Louisiana	2	Virginia	16
Massachusetts	12	Vermont	2
Maryland	11	Washington	156
Michigan	108	West Virginia	1
Minnesota	4,587	Wisconsin	1,522
Missouri	202	Wyoming	20
Mississippi	3	Wash., DC	1



Moondance Inn
1105 West 4th Street
Red Wing, MN 55066
651-388-8145

Experience the grandeur of the Moondance Inn

Five luxurious guest rooms:
private baths & double whirlpool tubs.

Exceptional business retreat center;
perfect for the creative off-site meetings.

Delicious Gourmet Brunch on Weekends.

*Built in 1874 and located in Red Wing's historic district.
Visit the Moondance Inn, an elegant retreat from the everyday.*



www.moondanceinn.com

Country Side Antique Mall

31752 65th Avenue
Cannon Falls, MN 55009
507-263-0352

20 miles west of Red Wing
Hwy. 19 to Cannon Falls
stoplight then one
mile south.

Two floors of antiques and
collectibles. Lots of
Red Wing stoneware,
dinnerware and art pottery.

50+ Dealers

Monday – Saturday 9:30-5:30
Sunday 11:00-5:30

Special Convention Hours
Wed.-Thurs.-Fri. July 5-6-7
8 to 8

Real Old-Fashioned Home Cooking

- Dine In or Take Out
- Daily Hot Entrees
- Generous Portions
- Homemade Soup & Chili –
Our Specialty • Deli Sandwiches
(Hot & Cold) • Box Lunches
- Homemade Salads
- Hors d'oeuvre Tray
- Frozen Lasagna • Hot Dishes
- Homemade Dessert - *Pies,*
Muffins, Bundt Cakes, Ice Cream,
Yogurt • Complete Breakfast
Menu - 7-11 a.m. Mon.-Sat., Sunday
Breakfast Buffet 9 a.m.-12:30 p.m.
- 10% Senior (60+) Discount
after 4:00 p.m.

Butch & Rosie's **Old
Fashioned
Foods**

1926 West Main St. • 388-8916
Pottery District
Mon.-Fri. 7-7 Sat. 7-5 Sun. 9-5

Wilcox continued from page 8

the only jug from that occasion that remains," Wilcox said.

North Star Stoneware Company was incorporated on the 5th of March, 1892, and immediately set to work on construction of their factory. The new company entered the field with twice the capital of its two predecessors and the prospects for it serving the area for many years was not doubted. The Red Wing and Minnesota Stoneware companies had established themselves as leaders in the expanding industry and had grown at a remarkable rate in order to keep up with demand.

Early in April of 1892 the contracts were let and the bricks for both the building and the kilns ordered. The foundation was in place by May 20, but heavy rains delayed the progress. It wasn't until the end of November that the first wares were produced, but the first firings were said to be of poor quality, probably due to the newness of the kilns and poor fuel.

North Star Pottery was in business for only four years. The depression of 1893 hurt both the company and its financial backers and it closed in 1895 combining with the other potteries to become part of Union Stoneware Co. The building was demolished in 1994 to make way for the AmericInn Motel. A brickwork star monument from the second story of the building is all that remains; add to it this "one-of-a-kind" salt-glazed piece now in the Goodhue

County Museum.

Although not showing a definite North Star mark, such as the "target" five pointed star or primitive leaf pattern seen on so many products from older local firms, it would appear that its origin can be confirmed to the commemorative first firing at the factory in 1892.

When Wilcox was ordained at Christ Episcopal Church in Red Wing, in June of 1953, his neighbor A.F. Lees gave him the North Star jug as a gift. Wilcox went on to become a missionary in Alaska, first serving three Indian missions on the lower Yukon River, then the community of Bethel and finally Cordova. After 14 years, he became an unpaid worker's priest. He also organized a historical society, built a museum, developed Alaska's state office of alcohol and aging, served as Fairbanks' chief of health and social services, worked as a commercial fisherman and taught one community how to bowl. Today, he runs an Internet publishing venture, teaches computer classes at the University of Alaska Fairbanks, and sells real estate.

On the day that he donated the North Star piece, he visited with Lees' granddaughter, Susan Lees of Shoreview, MN at the museum, just blocks from where their families grew up, and where the ball-shaped, salt-glazed vessel once sat on the mantle. It has traveled to Alaska and back and is now at home in Red Wing where it was created over 108 years ago.

Goodhue County Historical Society

For more than twenty years now, the Goodhue County Historical Society has been proud and honored to welcome the Red Wing Collectors' Society and its chapters to Red Wing for its annual convention. Many firsts and beginnings will mark this year's convention — Eva Zeisel's visit, the beginning of the long-anticipated Red Wing Collectors' Society-Goodhue County Historical Society joint oral history project, and new additions to our collections.

Our two organizations are a good "fit," and have worked together in the past, especially for the 20th anniversary of the convention when GCHS loaned a number of early, one-of-a-kind pieces to the convention for their timeline. Now, we will team up again. Margot Galt, an oral historian from the Twin Cities, will take the lead in collecting the histories and reminiscences of pottery employees. As of today, four oral histories have already been recorded and volunteers have undergone training to begin other histories. Steve Brown, Dave Hallstrom, and

Kay Wilshusen have been very helpful in laying the groundwork — providing possible names of narrators, topics, and other logistics — to get the project started.

One June 21, Glen Wilcox presented us a salt-glaze jug on permanent loan. This jug, from the first firing of the kilns at the North Star Pottery, was presented to Dr. A.F. Lees, a Red Wing veterinarian (and Glen's godfather). It appears that the jugs from this first firing went to selected prominent residents.

This is my first year welcoming the Collectors' Society as director of the Goodhue County Historical Society. For the past eight years, I have welcomed conventioners on an individual basis "behind the scenes" in my capacity as curator of collections. This year I am very pleased to be able to say to all of you "Welcome to Red Wing and to the Goodhue County Historical Society. Enjoy the convention and your stay in our area."

Char Henn

\$3.00 off

any large pizza
Dine in or Carry out only—
Delivery extra

\$2.00 off

any medium pizza

**Godfather's
Pizza™**

**Daily Pizza
Lunch Buffet
11:30 am - 1:30 pm**

\$1.00 off

any small pizza

Pottery Place, Red Wing 388-1138

Offer valid with this coupon through 9-1-00.
Not valid with any other coupon or special

RED WING POTTERY™

Salt Glazed Pottery



**Annual Collectors Firing
Friday July 7th**

Doors open at 8 a.m.

Every Piece will be stamped with our Limited Edition 4th Anniversary stamp. Limited quantity of numbered pieces.

Also Available:

- New Collector spoon in our "markings" series
- "Hard Crock Cafe" t-shirts & sweatshirts
- Red Wing Afghans
- Collectors Books



Old West Main St., Red Wing
651-388-3562 or 1-800-228-0174
Open 7 days a week
8-7 Mon - Sat • 9-5 Sunday

Hall of Fame Inductees

The three people who have been included in the highest honor the Society has ever bestowed upon any of its members are Lyndon Viel, David Newkirk and Dennis Yaeggi.

Lyndon Viel will always be remembered as an important person in the RWCS. His interest in Red Wing was one of the important factors in the Society's beginning. In fact, his article about Red Wing which appeared in the August, 1976, issue of the *Antique Trader* started it all. He authored three books about stoneware, *The Clay Giants*, *The Clay Giants Book 2*, and *The Clay Giants Book 3*. He was always willing to share his vast knowledge about the Red Wing stoneware industry and was instrumental in the growth of the Society. He always thought of collecting as an adventure.

The Society will forever be indebted to David Newkirk for organizing interested collectors into the group that has attracted world-wide attention and is now known as the Red Wing Collectors Society. He says that he first became interested when his mother-in-law gave him (and, of course, his wife Lorraine) a 3 gallon crock as a gift. His interest in pottery, and especially Red Wing, grew until he read Lyndon Viel's article in the *Trader*. He contacted Reverend Viel. They met and discussed Viel's upcoming book and the possibility of a newsletter. The next summer Dave orga-

nized the first convention in Red Wing. At that convention, the people in attendance decided that they would like to have another one the following year. They decided that they should organize and elected Dave the first president of The Society.

Dennis Yaeggi was a long-time collector of Red Wing who served for too short a time as the RWCS's president. Dennis was a dynamic president who, according to other members, was leading the Society in the right direction. He was known for having an "unbelievable collection" and for having a particular affection for mini-jugs. Members have said that it was fun to watch Dennis at the annual auctions. It is part of Society lore that when Dennis spied something he wanted, he bid with such enthusiasm that others would stand back and watch the master with awe. One collector said that "he had a unique way with people." His untimely departure was "a tragedy for the whole Society."

All three of these men have made contributions to the Society that have allowed it to become what it is today—one of the largest collecting groups in the nation with the largest volunteer-operated convention. All of the members thank these men for having this passion for Red Wing Clay products and for helping the Society to get started and stay vibrant. Welcome to the Red Wing Collectors Society Hall of Fame.

Membership Information

The Red Wing Collectors Society, Inc., is an organization which promotes the collecting of Red Wing and American pottery. Founded in 1977, the Society has members in 48 states and Canada. Membership is open to all persons interested in collecting American pottery/stoneware.

The highlight of the Society year is the annual 3-day convention held on the second full weekend of July in Red Wing, Minnesota. Education is a special component of the convention with a full day being devoted to seminars on Red Wing and U.S. pottery. Displays with an educational motif are also set up for viewing during the convention. Activities of the convention include a show and sale, auction, banquet, business meeting, and other special events.

A special commemorative piece is issued for each convention. These highly sought after pieces are made in limited quantity and are

available only to Society members.

The Red Wing Collectors Society also publishes a newsletter issued 6 times per year. Each issue contains feature articles, a section on state chapter activities, information on new finds in collecting and a place for ads.

State chapters of the Society have been organized in several states including Arizona, California, Colorado, Illinois, Iowa, Michigan, two in Minnesota, Montana, Nebraska, Washington and Wisconsin. These chapters meet several times throughout the year.

Membership to the Society is \$20 per year. Additional immediate family members living at the same address may be included at no additional charge. Family members wishing to purchase their own convention commemorative, however, must purchase individual memberships. One membership per person. Contact the Red Wing Collectors Society, P.O. Box 50, Red Wing, MN 55066.

#

APPLICATION FORM

☐ Please start my \$20 membership and subscription with the next issue of the Newsletter.

☐ Please renew my \$20 membership and subscription.

Enclosed is my check for \$ _____.

(Make remittance payable to Red Wing Collectors Society, Inc.)

(Membership fee is \$20 per year.)

Name _____

Address _____

City _____

State _____

Zip _____

* Approximately \$13 of the \$20 goes toward the newsletter.

Return to:

Red Wing Collectors Society

PO Box 50

Red Wing, MN 55066

For membership information call
800-977-7927 or 651-385-7716
or email: rwcsmem@win.bright.net

Please print clearly

My collection

interests are:

☐ Stoneware

☐ Dinnerware

☐ Art Pottery

GREAT DRAGON BUFFET CHINESE RESTAURANT

(651) 388-0188

All You Can Eat Buffet

Lunch \$4.95

Dinner \$6.95

Beverage included

Eat in or take out service available

11am-9pm Daily

210-212 Bush St.,
Red Wing, MN 55066

Parking available in back.

ESTABLISHED 1905. PROVEN EVER SINCE.



Over the past century, Red Wing Shoe Company, Inc. has proven itself as a leader in the footwear business by building the strongest brands with the widest selection of styles and sizes for work and outdoor.

RED WING SHOE COMPANY, INC.
ESTABLISHED 1905

314 Main Street • Red Wing, MN 55066 • 651-388-8211

First Convention Memories

It was a dark and stormy night... No, seriously it was a day with thin clouds, warm, but not hot, summer day of July 9th, 1977. Let me tell you WHY we were there. My husband was a young realtor working seven days a week and having the phone at home ring constantly—he was a very good realtor. This was in the old days when there were no computers, cell phones, or pagers — only wives to take messages at home, and secretaries at work. Larry was a very wise person, and in order to improve his marriage, he realized that in the middle of the week real estate is a little more quiet (this was the old days now), and gasoline was fairly cheap, and there were no phones in cars. Ah ha, he thought, I will take the little woman (she was little then) for a day trip in the car. We will leave the boys with Grandma, and I can be alone escaping for a while with Pauline (the then little woman). We started taking day trips in the middle of the week. It was wonderful. We talked uninterrupted. We related. We shared opinions, fears, dreams. Laughs. We even ate out. We had “dates” while being married. Cool.

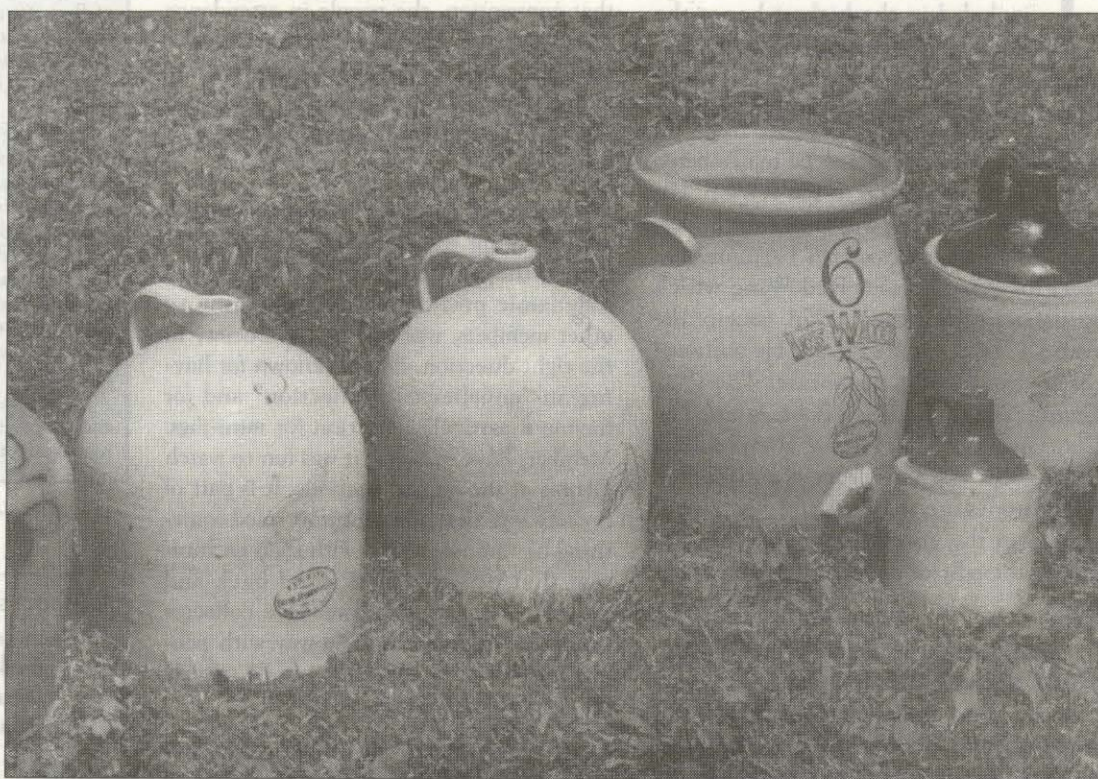
Then one day Peterson (then thin husband) says, “Let’s stop into this antique shop — it doesn’t cost any

money to LOOK at antiques. My mother has a lot of antiques. This could be fun.”

That was the beginning...

I said, “Are you kidding? MY MOTHER has only new furniture and things, not anybody else’s old stuff. How can you value OLD things, and besides they smell.” Larry didn’t seem to hear me.

We went in... I couldn’t breathe. I didn’t know that I was allergic to mold and dust, I only knew that I couldn’t breathe. Larry disappeared into another room. I tried not to breathe, and then, I discovered some Victorian clothes. I could almost imagine the women wearing these clothes and riding in fine horse drawn carriages. I could almost HEAR the clip clop of the horses hooves... I heard Larry call to me from somewhere else in the old house that was the antique shop. I found the stairs, and sure enough Peterson was in the base-



ment. He said, “You’ve GOT to come down here and see this!” The excitement in his voice was something I had never heard outside of our bedroom. So I went down the steep shallow creaky stairs. I REALLY had a hard time breathing down there, and my claustrophobia kicked in. The only thing my eyes would

focus on was a huge octopus like furnace. I got the creeps. Larry said, “Look at them. Just look at them, they’re absolutely beautiful.” This tone of voice I had heard before as he looked at certain magazines that were hidden from our young

Memories continued on page 17

Welcome Collectors NEED CASH?

Four ATM Locations in Red Wing:

- Auto Bank Drive Up ATM - 4th & Bush
- Cenex High Plains - Pioneer Road & Hwy 58
- Oasis Market - 3155 So. Service Drive
- Food Bonanza - 3249 So. Service Drive



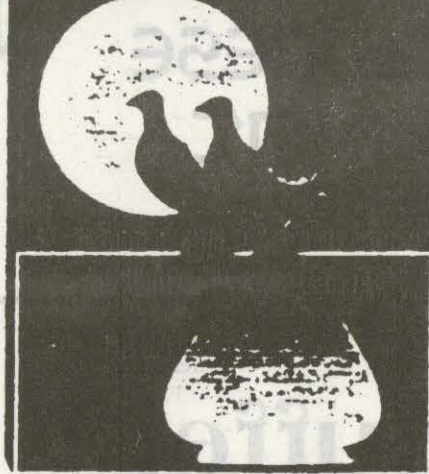
**GOODHUE COUNTY
NATIONAL BANK**

Red Wing, MN • Member FDIC

Celebrating 125 years of Partnership



NORTH DAKOTA



**POTTERY
COLLECTORS SOCIETY**

Rosemeade – U.N.D. –
Dickota – W.P.A. – Messer
3 Tribes

DUES – \$15 Single

FOUR NEWSLETTERS –
ANNUAL CONVENTION

CLUB INFORMATION:

Sandy Short
Box 14
Beach, North Dakota 5821
Telephone: 701-872-3236

CONVENTION:
June 8-10, 2001
Mandan, N.D.

csshortnd@mcn.net

Memories continued from page 16

sons. Finally, I noticed many round heavy-looking containers with numbers and symbols on them. Could these be what had his attention?? He picked one up and carried it up the stairs. I followed him quickly — up and out the back door of the house. In the bright day light (and

my mind. Larry did not seem to hear.

As time went by, Larry learned more about these THINGS. The antique dealers got to know him. I did research on small town bakeries. I could always go back to a place that I had been — finding the baker first, then the antique shop for Larry. He always took me with him.



fresh air) I saw my husband's eyes glazed over while he was holding this THING. He said, "There's so many of them down there. I want one of each size." I said, "What on earth FOR?!" He said, "To collect." I said, "WHAT FOR?!" Tension was building. You could feel it. Larry didn't seem to hear me. I became invisible. Larry got the car and moved it around back and began carrying these things up from the basement and filling our car with them. The car was a convertible (this was the old days, and sometimes cars came with cloth tops that would unlatch and fold into the back — yes they even sold these in Minnesota with the interesting winters that we have). One could breathe very easy in a convertible with the top down.

Larry began a strange dialogue with the shop owner. They would talk price and keep changing the numbers. First one would talk, and then the other person would talk about price. They seemed to enjoy this strange form of conversation. I did not understand why they just didn't add up the prices and Larry would pay the person and we could LEAVE. Larry was asking all sorts of questions about these things. Not much was known except they had been made in the town of Red Wing, Minnesota, and that's why they all had red wings on the front. I was getting hungry. Finally we left. I had one THING between my feet, and another THING on my lap. The back seat and floor were filled. The top was down on the car to accommodate the larger sized THINGS. I thought this was ...+&^#@%()...to say the least. I spoke

He gets lost very easily. He needed me to find the shops. The marriage stayed. Larry discovered that smaller THINGS were made of this Red Wing stuff. I thought that the smaller THINGS were kind of cute, but did not share this with Larry. It was better to not have so many THINGS from Red Wing. I did like driving on these trips with my husband though.

The antique dealers started talking about a minister from Wisconsin who was writing a book on this stuff. No other books were available — Larry had tried very hard to find out everything he could about this stuff. Finally, this first book, *Clay Giants*, written by Lyndon Viel, was finished, and the dealers said that the author was going to be at the Goodhue County Historical Society that summer. The dealers invited Larry to show up then, too, with some of his favorites pieces. Bring your own card table. Others will also do the same. You would meet other collectors. Larry got very excited.

When the day came, I was relieved to see Larry packing some of the smaller pieces for the trip. I still remembered that first time needing the top down on the car to get everything in. I grabbed my crocheting so I wouldn't get bored meeting more people that thought this stuff was exciting. Excitement means different things to different people. When we got to the Historical Society you could FEEL the excitement in the air. I didn't understand it, but I could feel it from the others. Larry was not paying attention to details, so I suggested a shady spot for his

table, and brought the cooler of Pepsi to set under the table. Peterson was addicted to Pepsi, (this was the old days, now Peterson has changed to diet-Pepsi).

Larry was off talking to new people, like Dave and Ruthie Stagner, and Rich Cronmeyer. There were 300 new people for Larry to meet. Lyndon Viel was signing books, and later on the supply of books ran out! That must have been wonderful for Lyndon to know how important this book was to so many people. I thought I would sit on the cooler, and crochet and guard Larry's stuff. Larry disappeared. Card tables were set up all around the building. I had no desire to look at anyone else's stuff. I did try to see what this minister/author looked like. He looked normal to me. Peaceful like a minister should be. Everyone seemed to worship him. Too bad he didn't write about something interesting like Victorian clothes, or maybe horses. I

would have been interested in that. I went back to guarding Larry's jugs. All day long, folks, nice folks, came by the table and looked. They all asked, "Whose jugs are these?" I dutifully answered, "These are Larry's jugs." I hoped they wouldn't ask me any other questions. I didn't really know much about this stuff. Usually no one asked more. I was safe. Then I got hungry. This happens a lot. Larry never gets hungry when he's talking about this stuff with other people. I worried that I might never get to eat that day. Larry was having so much fun talking.

The following Christmas, a friend of ours, (who became a minister later on) as a wonderful gift, had two tee shirts made for us. One, in yellow, in a woman's size, had the letters, "LARRY'S JUGS" in bright red, centered at the perfect level. The friend said that I could just simply wear that at the next convention and I wouldn't even have to relate with the collectors. The other tee shirt was black, in a man's size, and had the letters, "Pauline's stallion" printed in white. Neither of us can fit into these shirts any more. I guess I found too many bakeries! There is a photo of me, in my younger years, wearing my original "Larry's Jugs" tee shirt while I am sitting behind a board that has some stoneware items on it. This photo was first displayed in public at the convention banquet where Larry was the speaker after dinner.

Several years later (oh, by the way, we did eat that day) Larry rented a building in Red Wing because I pointed out that

he had WAY too many of these items, and I suggested that he SELL SOME OF IT. That little sale just before the now annual convention, was good. The next year, Larry decided to buy that building that we had rented. He told me that he'd like it if I would help him sell some more of this stuff — just for two years — "till I get it out of my system. Then, honey I'll buy you a cabin on a lake."

That was 14 years ago. The marriage is 35 years old. Larry bought me a home on a lake, in the country. I still crochet... and get hungry. Larry bought me a horse, and that horse keeps having babies. He bought me an antique carriage with a top that goes down or up. He wrote two books on the stuff with Gail and Dan DePasquale. Now I'm writing books too, but not on that stuff.

Twenty three years ago, Lyndon's first book signing party on that warm July Saturday was the beginning of new relationships and fun for many, many people. The discovery of how many different items were produced encouraged the collectors to look for and research the entire line that was made in Red Wing. This research still goes on, as does the friendships and the sharing. Lyndon and his first book started it all.

Submitted by Pauline Peterson, aka Mrs. Jugs

McDonald's of Red Wing Welcomes Red Wing Collectors Society

Pottery Collectors — Come see our beautiful Millennium Crocks and other souvenir stoneware items.



West Highway 61
(Huge Indoor Playland)

The First Convention – July 9, 1977

As of April 1, 1977, the Red Wing Collectors Society had fifty-three members in sixteen states. The numbers were: Minnesota-1, Wisconsin-7, Iowa-7, Michigan-3, Montana-2, Nebraska-2, California-2, Washington-2, North Dakota-2, Oklahoma-2, Illinois-1, Oregon-1, South Dakota-1, Tennessee-1, New York-1 and Maryland-1. Collectors were continuing to send in their memberships daily and the numbers were rapidly rising. April not only marked the official birth of the Red Wing Collectors Society, but of the first issue of the Red Wing Collectors Newsletter, which was to be published quarterly during 1977 and six issues per year after that due to the large volume of information made available.

Also in April, some preliminary planning was beginning for a gathering of Red Wing collectors during the coming summer of 1977. With the increase in interest in Red Wing pottery on the rise and more and more collectors with a desire to share this interest with fellow collectors, a gathering of current members was decided upon. Another indicator of the increased interest was the increase in price of Red Wing pieces and the number of people seeking Red Wing in antique shops, shows, garage sales and auctions. This growing interest comes



from the fact that Red Wing is genuine Americana dating back over 100 years

and the fact that it is no longer produced, is very useful as well as very decorative.

First Convention continued on page 19

Great Chicken



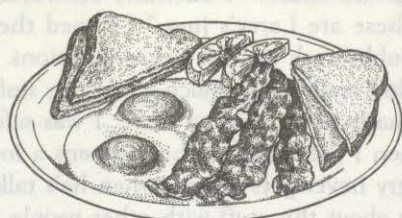
- Complete Breakfasts
- Sandwiches
- Tortilla Wraps
- Chicken Dinners
- Salad Bar
- Cones and Shakes

A proud sponsor of the Potter's Convention

Mon.-Fri. 6am-10pm • Sat.-Sun. 7am-10pm

Randys

709 Main Street, Red Wing, MN
651-388-1551



BREAKFAST COUPON

Two eggs, toast,
choice of meat,
hashbrowns, or
American fries

\$2.99

Randys

Good thru 7/16/00

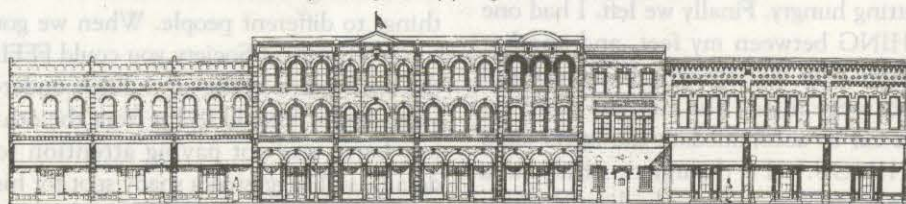
RIVERFRONT CENTRE'S Annual STONEWARE SALE



Monday, July 3
through
Friday, July 7
9:00 am — 6:00 pm

RIVERFRONT CENTRE

Your Collectible Headquarters
MAIN STREET, RED WING
Contemporary Shopping, Historic Charm





First Convention continued from page 18

There are hundreds of different items to collect and hundreds of variations, some common, some rare. All the key ingredients to make collecting Red Wing an enjoyable as well as rewarding hobby.

It was announced in the Red Wing Collectors Newsletter vol. 1 No. 2, that a date and site had been selected for the first annual convention. Members of the Society were invited to gather in Red Wing on Saturday, July 9th, 1977 at the Goodhue County Historical Society. Activities to be included were an autograph party for Lyndon Viel, author of the recently published book *The Clay Giants*, in addition several collectors will display items from their collections. The event was to take place at the Museum at 1166 Oak Street in Red Wing from 10 am to 4 pm. A business meeting was also to be held at the St. James Hotel that evening where officers would be elected and plans made already for the 1978 convention. After the business meeting a banquet too was planned, but other than that, no other activities were planned.

Out-of-State Collectors Prize Local Stoneware was the headline in the Monday, July 11, 1977 issue of the *Red Wing Republican Eagle* newspaper. The article, written by Ruth Nerhaugen, went on to tell of the collectors and the distances many travelled to attend. In the first hour of the gathering, 56 people

from Minnesota, Wisconsin, Missouri, Kentucky, North Dakota, Illinois, California and Iowa had signed the register. Museum employees were taken by surprise when they learned how far some of the collectors had travelled. Vern and Vanita Clark closed up shop at their combination grocery store and restaurant to attend. They arrived in Red Wing around midnight, but were up at the crack of dawn Saturday because they didn't want to miss any part of the big event. When the Missouri Clarks saw an advertisement in the *Antique Trader* magazine, they couldn't think of a better time to make the trip to Red Wing, a visit they had contemplated for years.

Another reason to attend was the Wauwatosa, Wisconsin minister, Lyndon C. Viel, author of *The Clay Giants*, who was on hand throughout the day autographing his book and settling arguments about pieces of dubious origin and explaining the complications and procedures of pottery making and identifying. Before Lyndon's book, the collectors had no book or expert to turn to with their questions. A bystander remarked "We're just wild about the book," copies of which the museum had on hand to sell, they sold out within two hours.

An estimated 300 people viewed a great assortment of Red Wing made stoneware and pottery in addition to the

First Convention continued on page 20

RIVERFRONT CENTRE Merchants Welcomes Red Wing Collectors

Mainstreet Toys

The Glass Scope

In The Woods

Noah's Ark

Irish Macushlas

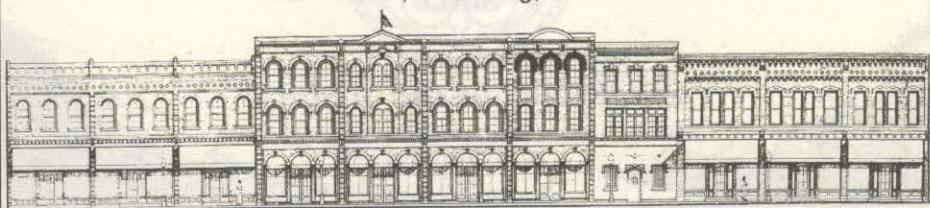
Good Life Nutrition

Global Express

Eagle's Nest

Red Wing Shoe Store

Main Street, Red Wing, Minnesota



We're Expanding to Serve You Better.

- Vaulted Ceilings For Enhanced Air Quality
- A Larger Non-smoking Casino Room & Lounge
- Upscale High Stakes Blackjack & Slots
- Newly Remodeled Tradewinds Buffet
- Golf or Ski at Mount Frontenac
- Mississippi River Cruises
- Eight More Blackjack Tables
- 800 New Slot Machines
- A Dramatic Great Entry
- Additional Gift Shop
- New Coffee Shop



Owned and operated by the Prairie Island Indian Community.

Red Wing • 1-800-222-7077 • www.treasureislandcasino.com

First Convention continued from page 19

large collection owned by the museum and loaned by local individuals for the day. Included were the common and the rare examples such as the "lunch hour" pieces made by workers during their lunch breaks. None of the visitors to Red Wing who attended this first get together regretted their long trips.

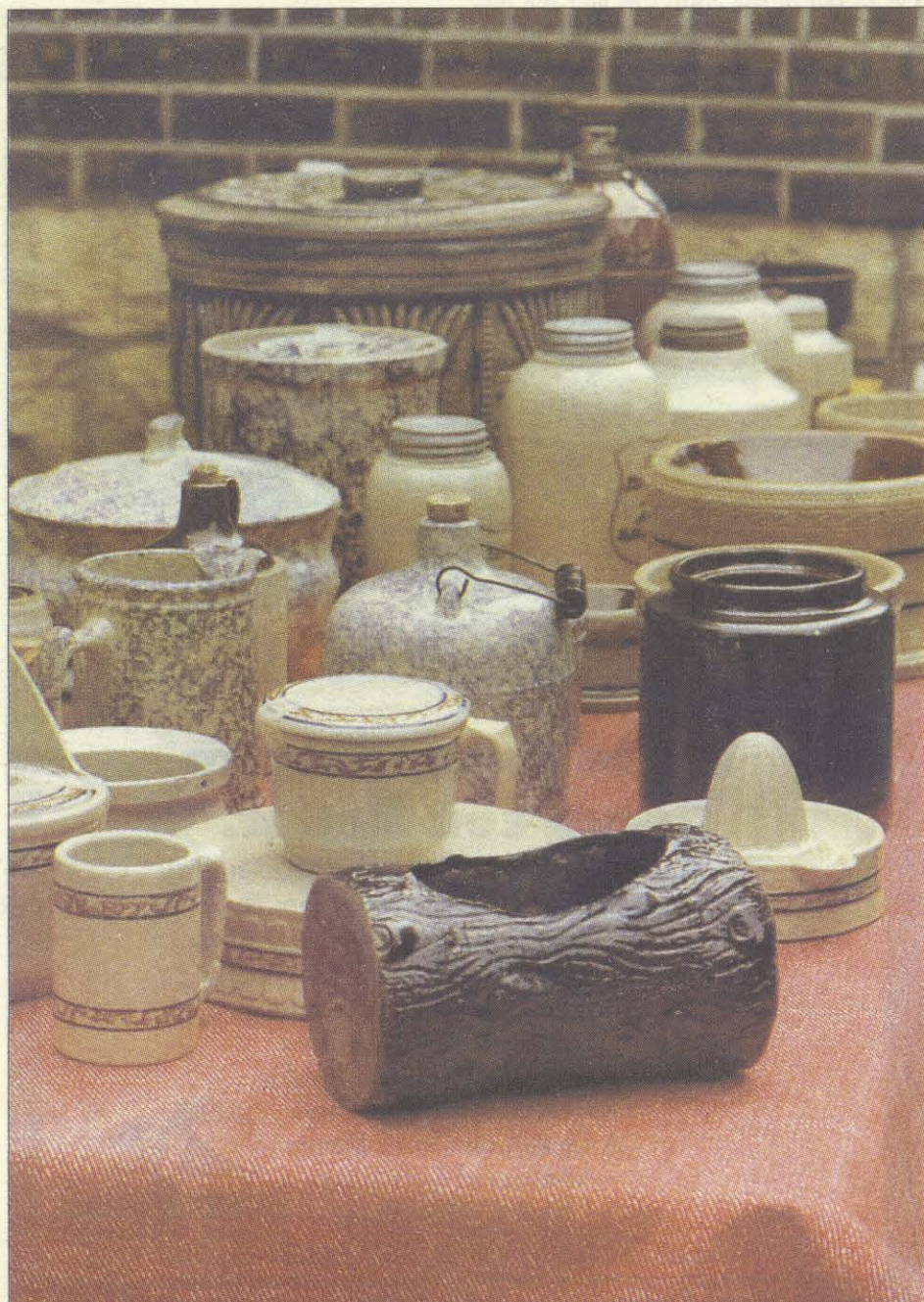
The first annual business meeting of the Red Wing Collectors Society was held at 6:00 p.m. that same Saturday in July 1977 at the St. James Hotel with approximately 100 persons attending. Officers elected were Dave Newkirk, president; Dave Stagner, vice-president; Bernice Scholer, secretary; John Johnston, treasurer and Lyndon Viel, historian. The First Annual Banquet was also held at the St. James Hotel that same evening and forty-five members were in attendance, along with their guests, bringing the total attendance to ninety-nine. Awards were given in various categories, and Tom Arnold, former chief ceramics engineer for Red Wing Potteries was presented with an honorary membership in the Society. The keynote address was given by Lyndon Viel who viewed his book as "only the beginning as far as knowledge about Red Wing is concerned." He referred to those present



as leaders in a new wave of Americana that is growing in our country today,

"because nobody else knows what we know, and we gotta hand it on."

Photos courtesy of Larry Peterson



Pottery Place Mall Has it All!

*Pottery Place Show and Sale
Over 50 Dealers
Throughout the Mall!*

*4th Annual Brat Feed
Wednesday, July 5th 11-3 pm
Food, Fun, Entertainment*

*2000 Limited Edition
Pottery Place Commemorative
On Sale Wednesday, July 5th at 1 pm
Replica of the North Star Monument on Old West Main St.*



As unique as our history.

2000 West Main Street • Red Wing, MN 55066
(651) 388-1428