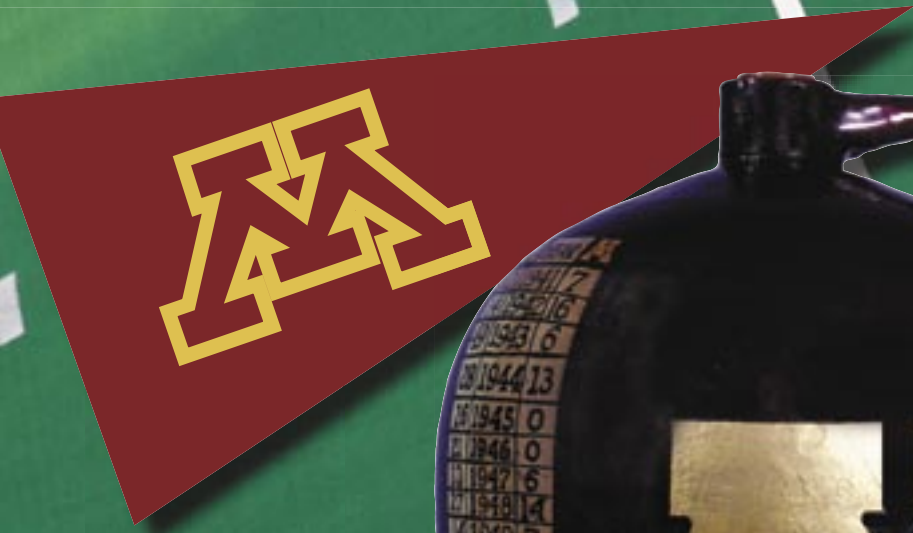




VOL. 31 NO. 5

NEWSLETTER

OCTOBER 2006



MINNESOTA VS MICHIGAN

The Battle for the Little Brown Jug

IKE'S VISIT TO RED WING

Pages 8 & 9

RED WING'S USE OF "PROVINCIAL"

Pages 10 & 11

PLAN YOUR MIDWINTER GETAWAY

Pages 12 & 13



RWCS CONTACTS

RWCS BUSINESS OFFICE

PO Box 50 • 2000 Old West Main St. • Suite 300
Pottery Place Mall • Red Wing, MN 55066-0050
651-388-4004 or 800-977-7927 • Fax: 651-388-4042
BUSINESS/CONVENTION MANAGER: STACY WEGNER
rwcs1@redwing.net
ADMINISTRATIVE ASSISTANT: LORI ANDERSON
rwsmem@redwing.net
Web site: www.redwingcollectors.org

BOARD OF DIRECTORS

PRESIDENT: SUE JONES TAGLIAPIETRA
2219 Lakeland Ave. • Madison, WI 53704-5636
608-241-3072 • rwcsjt@yahoo.com

VICE PRESIDENT: JOLENE McKOON
3124 4th St., Unit 8 • Moline, IL 61265
309-797-3894 • jmkoon@att.net

SECRETARY: PAULETTE FLOYD
208 E. Somonauk • Yorkville, IL 60560
630-553-9234 • pjfloyd@sbcglobal.net

TREASURER: MARK COLLINS
7312 Lake St. • Omaha, NE 68134
605-351-1700 • markcollins@cox.net

HISTORIAN: STEVE BROWN
1816 Sakenda Rd. • Buffalo, MN 55313
763-684-2400 (after 5 p.m.) • bigpaws@charter.net

REPRESENTATIVE AT LARGE: RUSSA ROBINSON
1970 Bowman Rd. • Stockton, CA 95206
209-463-5179 • rrusa@aol.com

REPRESENTATIVE AT LARGE: JERRY ERDMANN
W15416 Fair-Morr Rd. • Tigerton, WI 54486
715-535-2094 • jjerd@frontiernet.net

AUCTION MANAGER: JEFF FLOYD
208 E. Somonauk • Yorkville, IL 60560
630-553-9234 • pjfloyd@sbcglobal.net

CO-COMMEMORATIVE MANAGERS: JOHN TREMBLE
942 Becky Circle • Hudson, WI 54016-7509
715-381-0006 • rwcscommemorative@hotmail.com

MATT HUEPFEL
rwcscommemorative@hotmail.com

INTERIM EDUCATION MANAGER: TERRY SPEEDY
5079 S. Seymour Rd. • Swartz Creek, MI 48473
810-938-3228 • thespeedys@tcwireless.us

JULY CONVENTION SUPPORT PERSONNEL:
Pre-registration – DONNA & CHUCK HANSON
Computer Registration – LORI ANDERSON
Show & Sale – CINDY & PETE MAY
Display Room – JULIE & GLENN BEALL

IN THIS ISSUE.....



PAGE 3	F.A. MORLEY JUG, ABOUT THE COVER
PAGE 4	RWCS VIDEO LIBRARY
PAGE 5	THE THREE ORPHANS' SALOON
PAGE 6	RED WING'S USE OF "PROVINCIAL"
PAGE 8	IKE'S VISIT TO RED WING
PAGE 10	CHAPTER NEWS
PAGE 12	2007 MIDWINTER GET TOGETHER INFO
PAGE 13	2007 MIDWINTER REGISTRATION FORM
PAGE 14	CLASSIFIEDS
PAGE 15	RECENT FINDS & DEALS
PAGE 16	MONSTER CROCKS

MEMBERSHIP

A primary membership in the Red Wing Collectors Society is \$25 annually and an associate membership is \$10.

There must be at least one primary member per household in order to have associate membership. Members can pay for more than one year when renewing their membership. Contact the RWCS Business Office for additional details.

NEWSLETTER EDITOR

RICK NATYNSKI
GENERAL DELIVERY: USPS • 13425 WATERTOWN PLANK ROAD
ELM GROVE, WI 53122-9998
RWCSNEWSLETTER@WI.RR.COM 414-416-WING (9464)

The Red Wing Collectors Society, Inc. Newsletter is published bi-monthly by the Red Wing Collectors Society, Inc. Suite 300 • 2000 West Main Street Red Wing, MN 55066.
Phone: 651-388-4004 Fax: 651-388-4042
www.redwingcollectors.org

Postmaster: Send address change to: Red Wing Collectors Society, Inc. Newsletter
PO Box 50 • Red Wing, MN 55066. USPS 015-791; ISSN 1096-1259.

Copyright © 2006 by the Red Wing Collectors Society, Inc. All rights reserved.
The Red Wing Collectors Society, Inc. does not guarantee the accuracy of articles submitted by individual members.

F.A. MORLEY

DEALER IN CIGARS, WINES AND LIQUORS.



Not this year: This 2005 photo shows a happy Minnesota Golden Gophers football team celebrating a big win over Michigan, but it was the Wolverines holding the jug high this year following a 28-14 win on Sept. 30.

ABOUT THE COVER

The Little Brown Jug is possibly the most recognizable piece of Red Wing Stoneware ever made. It is the coveted trophy claimed by the winner of each University of Minnesota vs. University of Michigan football game, and remains the most famous of all college rivalry trophies.

On Oct. 31, 1903, the Michigan football team arrived in Minneapolis to play their rival. Michigan had won 28 straight games, 10-0 for the season, and excitement was evident everywhere. Some of the 20,000 Minnesota fans sat in trees and on top of telephone poles to watch the game. When the Gophers scored a second half touchdown that tied the score at 6-6, fans stormed the field in celebration causing pandemonium. The game was called with 2 minutes remaining on the clock. Michigan's winning streak was over.

In their haste to catch the train, Michigan left behind its newly purchased 5 gal. water jug. They had bought it at a variety store near campus prior to the game. The next day, equipment manager Oscar Munson found the jug and took it to L. J. Cooke, the head of the Athletics Dept. Still excited from the game, they decided to keep the prize and painted on its side "Michigan Jug - Captured by Oscar, October 31, 1903" and the score, "Minnesota 6, Michigan 6." Michigan's Coach Yost sent a letter asking for the jug to be returned. Cooke wrote back "if you want it, you'll have to win it."

The teams didn't play again until 1909. Michigan won the game and the jug was returned. In 1910 Michigan left the conference and Minnesota didn't have a chance to win it back until 1919. The Gophers won, but their rivals claimed they couldn't find the symbolic trophy. Minnesota persisted and the Wolverine equipment manager located the jug once again and the latest score was added. The schools gave the jug a brown gloss the following year.

Now 103 years later, game results adorn its sides - 63 won by Michigan, 22 by Minnesota and 3 ties. As autumn colors announce the season changes, the Little Brown Jug signifies the ongoing traditions of college football's greatest rivalries.

Big thanks to RWCS Member Mary Ellen Voracek for this article. Photos courtesy of the University of Minnesota Athletic Dept.

This impressive 20-gallon advertising jug recently made its debut on the Wing Tips Web site at www.redwingnet.com. Wing Tips contributor Steve Lythjohan said he was told the jug sat in a cigar and candy store at the corner of Bush and Main in Red Wing until the 1960s when it made its way to a western Wisconsin city where it has remained in one family ever since.

Gary Tefft reports that according to the 1894 Red Wing Directory, a F.A. Morley was listed as a potter for RWSWCo. His residence was listed as 1503 Main St. Also noted in the '94 Directory was "Morley & Stromberg Grocers", as well as S.L. Morley and Mrs. Martha Morley, widow, all at that same address. Tefft says:

"Morley family members played an early role in Red Wing's clay industry. F.L. Morley was mentioned in an 1877 newspaper account as an experienced worker from Ohio, working at Philleo's Terra Cotta Works. Several years ago, we were shown a photo of a jug which Bonnie and I believe is the same one pictured here. It was confirmed to me at that time that the jug had come from the same family as that of the Morley Grocery on West Main Street. I remember the store on the corner of Main & Bush (329 Main) as Nelson's Cigar Store. I don't recall ever seeing a jug in the window, but there used to be a carved, wooden cigar store Indian out front until it was sold and left town in the early 1960s. I'm sure other old-time Red Wing residents remember it as well."

CHECK OUT THE RWCS VIDEO LIBRARY

If your schedule hasn't allowed you to attend the Red Wing Collectors Society Convention lately, or you've found that buying and selling keeps you too busy to attend the education sessions, you've missed out on some of the best opportunities to learn more about your areas of interest. Fortunately, with education being one of the primary focuses of the Society, RWCS has recorded many of the presentations and keynote addresses offered at Convention.

Whether you're a new collector looking to soak up as much Red Wing knowledge as possible, or an advanced collector hoping to brush up on your Red Wing education or branch out in collecting, the RWCS Business Office has a video library filled with more than 10 years of educational sessions presented at Convention. And to top it off, the videos and DVDs can be sent straight to your mailbox! All you have to do is pay for return shipping.

How does it work?

Listed below are all the presentations available for a 30-day rental. Simply pick a few of the presentations that pique your interest and call the business office at 651-388-4004 or 800-977-7927 to check them out.

2006

Keynote Speaker - Tom Braun
Dinnerware - Terry & Marilyn Moe
Dos and Don'ts of Red Wing Dinnerware - Dennis Cayler & Sally Pavlak
Latest Red Wing Dump Finds - Steve Showers
Pottery Design and Creation - Ephraim Potters
Red Wing 102 - Paul Wichert & Linda Krueger
Red Wing Foundation - Ron Linde, et al
Recent Finds & Discoveries in the Red Wing Dump - Dennis Nygaard & Austin Fjerestads

2005

An Overview of Red Wing Dinnerware Part 1 - Terry Moe, Larry Roschen, and John Sagat
An Overview of Red Wing Dinnerware Part 2 - Terry Moe, Larry Roschen, and John Sagat
Chat with Designer Charles Murphy
KidsView
Exotic Animals of Minn. & ND - Con & Sandy Short
Identification of North American Stoneware & Pottery ID - Mark Cellotti
Belle Kogan - Her Life, Career and designs for Red Wing - Bernie Banet
Pre-1950's Red Wing Cookie Jars - Kent Williamson
Red Wing Mini Jugs Past, Present, Future - Terry Speedy
Stoneware Miniatures of New Brighton, PA - Dennis Nygaard
The Art of the Potter - Rick Lamore
The History of RWCS Commemoratives 2005 Keynote Address
Weller Pottery - Marie & Mark Latta
What is the Goodhue County History Center - Char Henn
What's happening at your Museum - Ron Linde & Members of Foundation BOD

2004

Fall & Winter Dump Finds 2003-2004 - Steve Showers
Fort Dodge & the Ties with Western & RW - Greg Steffens
Keynote Speaker - Ray Reiss
KidsView 1, 2 & 3
New Finds in the RW Stoneware Dump - Dennis Nygaard
Red Wing 101 - Paul Wichert, Carl & Linda Schessler
Red Wing Animals - Ron Linde
Red Wing Jardinieres Session I - Mike Orgler
Red Wing Jardinieres Session II - Mike Orgler
Reflections - Stan Bougie
Unlocking the Potential of Your Collection - Byron Gunderson & Larry Peterson

2003

Canning Jars - Art Holiday
Coffee Anyone? - Tracy Callaghan Kuffel
Collecting Red Wing Art Pottery - Deanna Juergens
Mini-Jugs - the Miniature Clay Giants - Dick Fastenau
Managing Your Collection into Maturity - Gunderson & Peterson
Memories of a Potter's Daughter - Helen Bell
Red Wing Sewer Pipe - Wally Armstrong
Schleich Red Wing Pottery Collection Keynote - Steve & Rose Splittgerber
Overview of Red Wing Dinnerware # 1 - Larry Roschen & Terry Moe
Overview of Red Wing Dinnerware # 2 - Larry Roschen & Terry Moe
Porcelain & Pottery Restoration - Avis Tomazevic & Dan Dirnbauer
Putting Together a Convention Display - Ron Linde
White Pottery - Utica, New York - Jill Holmes

2002

Becker Advertising and a Child's Memories - Mike Back
Collecting According to Kuf - Dave Kuffel
Coffee Anyone? - Tracy Callaghan-Kuffel
Developing a Goal-Protect & Preserve - Peterson and Gunderson
Early Memories of the Potteries - Helen Bell
George Rumrill: Schemer-Scoundrel-Thief - Byron Gunderson
Keynote Address - Walk Down Memory Lane
Murphy Designs at RW Potteries - Ron Linde
Pacific NW Advertising on RW Stoneware - Steve Muehleck
Pre 1950's Cookie Jars - Kent Williamson
Recent Dump Finds - Steve Showers & Dennis Nygaard
Red Wing Art Pottery Lamps - Jan Pinkert
What Do You Do With Your RW? - Bonnie Myers

2001

Memories of the Pottery - Edmund Alpers
Extinct Animals of MN & ND - Con Short
On the Trail of the Gypsy-Plain & Reed - Marilyn & Terry Moe
Salt Glaze-The Best of the Best - Keynote Speaker Dave Short
Red Wing Bowl-er-ama - Chuck Hanson
Canadian Stoneware - Ron Linde
Exploring Red Wing Bean Pots - Kent Williamson
Western Stoneware - Art Holliday
Buying on eBay - Don Meyers

Sherwood Brothers Pottery - Dennis Nygaard & Marv Juel
Jugs That Quack - Steve Ketchum
Decorating with Art Pottery - Deanna Juergens
Investing in Red Wing-Part 2 - Larry Peterson & Byron Gunderson

2000

Advertising Stoneware - Dave Kuffel
Brushware: The Marked & Unmarked - Bob Cox
Collecting by Color Part III - Deanna Juergens
Fondoso Dinnerware Beginning a Collection - Monica Keding
Investing in RW/Managing Your Collection - Byron Gunderson & Larry Peterson
Red Wing Memorabilia - Bob Bremer & Dave Hallstrom
Red Wing Mini Jugs - Chris Osterholz
Red Wing Stoneware Pitchers - Gail Peck
RumRill Glazes - Ron Linde
Stoneware 101 - Chuck French
The Stoneware Dumps of Red Wing - Dennis Nygaard
Eva Zeisel - Keynote Speaker
Eva Zeisel - Questions & Answers

1999

Advertising Red Wing Stoneware - Dave Kuffel
Art Pottery New Pictures - Ray Reiss
Basic Terminology for Beginners - Con Short
Beginning Collections of Art Pottery - Tom Trulen
Categorizing Red Wing Oddities - Steve Brown
Collecting by Color - Deanna Juergens
Designer Ernest Sohn - Ron Linde
Dinnerware Identification - Curt Johnson
Lids - The Finishing Touch - Con Short
Persistence Pays Off - Al Kohlman
Red Wing Art Pottery Animals - Jennifer Keding
Salt Glaze Identification - Dave Short
Stoneware, A National Overview - Mark Cellotti

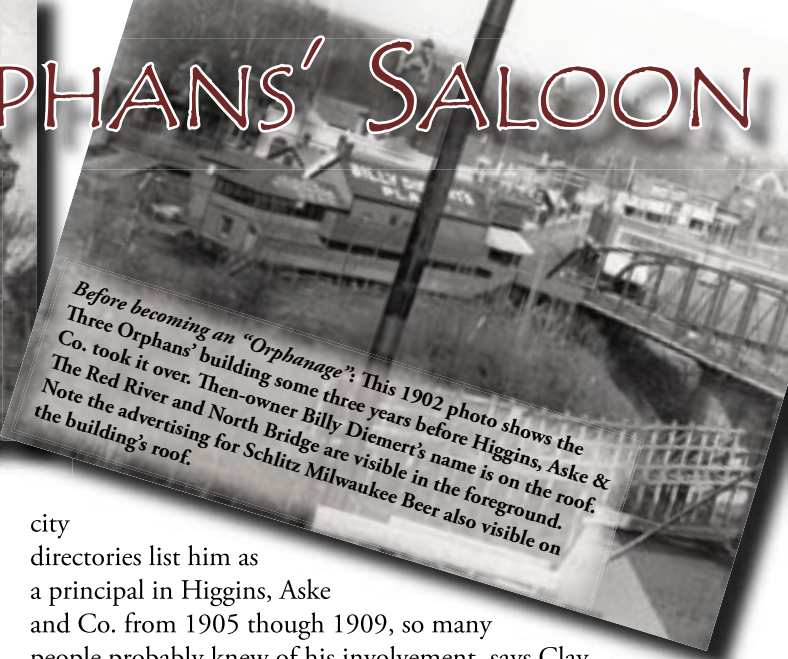
1998-1996

Not Available

1995

Advertising Jugs - Larry Peterson
The Bottle Stoneware Collection - Steve Ketchum
Collecting Red Wing Cookie Jars - Len Lindstrom & Kent Williamson
Dinnerware Knowledge for the Collector - Cliff Ekdahl
Making Sense of Shape Numbers on Red Wing Pottery - Ron Linde
Red Wing Reproduction - Chuck Drometer
Red Wing/What Cheer Potter, Johnnie Nelson - Corrinne Reed

THE THREE ORPHANS' SALOON



Before becoming an "Orphanage": This 1902 photo shows the Three Orphans' building some three years before Higgins, Aske & Co. took it over. Then-owner Billy Diemert's name is on the roof. The Red River and North Bridge are visible in the foreground. Note the advertising for Schlitz Milwaukee Beer also visible on the building's roof.

The Three Orphans' Saloon, *Atlas of Cass County, North Dakota*, 1906.

Citizens of North Dakota celebrated when their state was officially admitted into the United States in 1889. But in that same year, a state Constitutional prohibition of alcoholic beverages was enacted. For the next 43 years, North Dakota residents couldn't legally enjoy a fine beer, wine or whiskey. But that doesn't mean they couldn't travel to get their buzz. Neighboring border towns in Minnesota became popular destinations for those who wanted to drink, and Fargo saloon owners quickly moved across the river to Moorhead in Minnesota's Clay County, where the sale of liquor flourished until local and national prohibition efforts took effect between 1915 and 1920.

In 1900, the number of saloons in Moorhead peaked at 45. With 3700 people in Moorhead at the time, that equated to one saloon for every 80 people! Clearly Moorhead couldn't support those saloons by itself – it was the customers coming over from dry North Dakota where more than 9500 people lived in Fargo alone. While this injected a lot of money into Moorhead's local economy, drunken bar patrons caused more than their fair share of problems.

Moorhead's saloons were located throughout the city, but most congregated around the Moorhead side of the two bridges into North Dakota, which gave visitors their first chance and last chance to wet their whistle before returning home. Higgins, Aske and Company's "Three Orphans' Saloon" opened in 1905 and took over the building previously occupied by saloon-keeper Billy Diemert. Owners John W. Higgins and Julius Baker Aske now had one of the best locations in town – just over the North Bridge that crossed the Red River of the North, which forms the border between Fargo and Moorhead. Three Orphans' was the first saloon on your left as you crossed the North Bridge. It was actually built up on stilts on the riverbank so it could be as close to North Dakota as possible.

But Higgins and Aske accounted for only two of the owners. Who was the third?

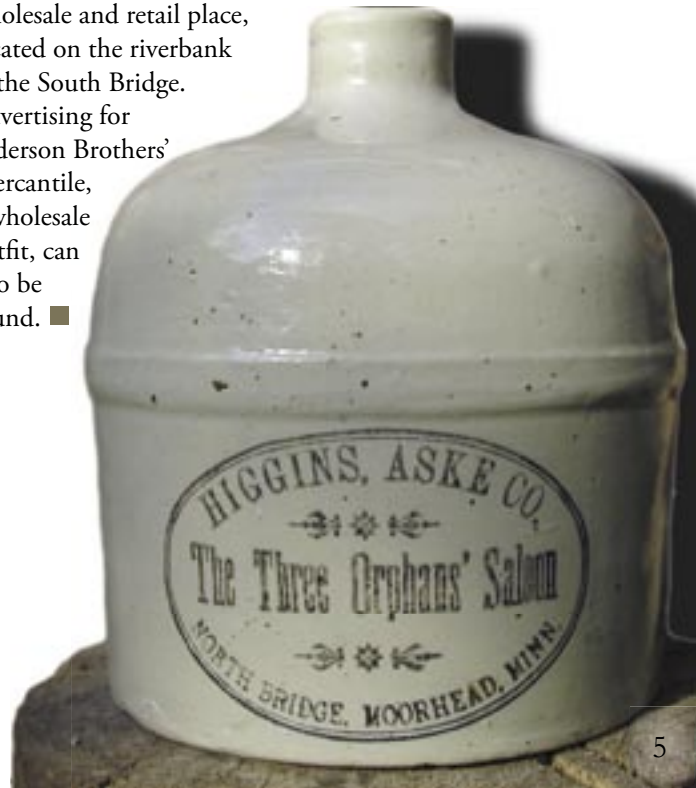
The "Third Orphan" was Thomas H. Curran. According to his descendents, Tommy Curran had to be a silent partner because of his previous work in law enforcement. However,

city directories list him as a principal in Higgins, Aske and Co. from 1905 though 1909, so many people probably knew of his involvement, says Clay County Historical Society Archivist Mark Peihl.

The saloon had an open porch that fronted the river. Patrons and staff often threw glasses, bottles, broken pottery and other garbage over the rail into the river. During times of low water, people have found the riverbank and river bottom littered with such items – and incredibly on occasion, a complete Red Wing stoneware jug boasting Three Orphans' advertising. But diggers beware...the riverbank is now protected as a registered Minnesota archeological site and removing artifacts is prohibited, Peihl says.

Three Orphans' stayed open until 1915 when voters closed Clay County's saloons in a county-wide election – four or five years before national prohibition. Peihl says at least three other Moorhead establishments issued stoneware advertising jugs – the Gold Mine Jug House on Main Street and A. J. Rustad's wholesale and retail place, located on the riverbank at the South Bridge.

Advertising for Pederson Brothers' Mercantile, a wholesale outfit, can also be found. ■



Architectural photos and research courtesy of Mark Peihl, Archivist, Clay County Historical Society. Thanks to a Midwestern Red Wing collector for submitting the photo of the jug.

Red Wing Provincial Line

Red Wing
Use

1994

Collecting Red Wing Art Pottery - Ray Reiss
Dinnerware & Artware ID - Len Lindstrom and Dave & Ardelle Johnson
ID Panel - Dave Hallstrom and Pat & Paul Hauke
Insuring Your Collection - Dale Erickson
Interview with Charles Murphy - Ron Linde
Less is More - Red Wing Mini Jugs - Larry Peterson
Repairing and Reproduction - Chuck Drometer
Red Wing Commemoratives - Rich Cronemeyer
Red Wing in Canada - Gary & Deb Noto
Red Wing Paper Items - Dan DePasquale

1993

All About Auctions - Dick & Todd Houghton
Art Pottery & Dinnerware ID - Tom Trulen & Stan Bougie
Collection of Art Pottery - Ray Reiss
Decorating with Red Wing Stoneware - Kathy Decker
Red Wing Commemoratives - Rich Cronemeyer
Shapes & Numbers on the Bottom of RW Art Pottery - Ron Linde
Stoneware ID Panel - Dave Hallstrom, Chuck Drometer, and Pat & Paul Hauke
Uncovering the RW Dump - Steve & Phyllis Showers

1992

Collecting Red Wing Artware & Dinnerware - Tom Trulen & Robert Stapel
Dinnerware/Artware ID Panel - Gary Antoline, Tom Trulen & Robert Stapel
Extinct Animals of Minnesota and North Dakota - Con & Sandy Short
Red Wing Spittoons & Cuspidors - Rich Cronemeyer
Stoneware ID Panel - Kent Williamson, Pat Hauke, & Bev Winchell
Tour of the Pottery - Sue Gillmer
Visits with Charles Murphy - Ron Linde, Mary & Otto Bang, & Darlene Dommel
World of Miniatures - Chuck Drometer & Dale Erickson
Yellow Ware Revisited - Jack Vye



Brittany



Ardennes



Orleans



Normandy

Provincial Cookingware



Small oval dish

pro-vin-cia
of or rel
style re ma
formality

In the 1970s, collecting Red Wing dinnerware was about trying to match pieces that made up a pattern. There was not a lot of resource material available until 1980, when thanks to Stan Bougie and David Newkirk, the first Red Wing dinnerware book was published. Other books followed, generally covering dinnerware over the years. Then in 1997, Ray Reiss published *Red Wing Dinnerware Price and Identification Guide*. Both books can still be found for sale online, although Ray's is usually easier to find since it's newer. Although Red Wing brochures continue to provide more information on dinnerware lines and patterns, there still aren't many updated facts.

The term "provincial" and its use in several dinnerware lines has been confusing for me, as I'm sure it has been for many other collectors. I consulted with a number of knowledgeable dinnerware collectors regarding this term and its different uses in dinnerware and concluded that the best way to gain an understanding is to dissect the timeline spanning between the three different decades during which provincial was used. We'll start in the 1940s, progress into the 1950s and then detail the last use of provincial in 1963.

Concord



Blossom Time



Iris

Ardennes, Orleans, Normandy, Blossom Time, Lexington, Iris, Magnolia and Quartette photos courtesy of redwingdinnerware.com contributors Al & Jan at Hill Street Antiques
Brittany photo courtesy of redwingdinnerware.com contributors Mary Beth & Earl

Lotus photo courtesy of redwingdinnerware.com contributor Ivy Loughborough
Provincial Cookingware photo courtesy of redwingdinnerware.com contributors Steve & Barb Brown
Village Green Provincial photo courtesy of redwingdinnerware.com contributors Buck & Sue

ing's of "Provincial"

By RWCS Member Dennis Cayler

First, the term should be examined in the context of the 1940s and 1950s time period. "Provincial" was used by Red Wing to embrace a countrified, rustic, back to early American heritage theme. Its intentions were to produce appealing dinnerware that could be used in various modern home decors. This was achieved through hand-painted decorations on all of the company's dinnerware. Red Wing designs were evolving with the changing American lifestyle.

Provincial line

The first use of provincial was in the Red Wing Provincial line, introduced in 1941. Brochures indicate the luncheonware portion of the line consisted of the Ardennes, Brittany and Orleans patterns. Normandy is also listed under the Provincial line.

Provincial Cookingware line

The second use of the term was in the Red Wing Provincial Cookingware line, also introduced in 1941. These pieces were side-stamped "Red Wing Provincial Ware" with the assigned style number of their piece, and had terra cotta exteriors and reddish brown lids and interiors. This line included bean pots, casseroles and marmites, along with an oval dish, fry pan and shirred egg dish.

Concord Provincial Luncheonware

The third use was Provincial Luncheonware supper sets from the Concord line. It included six patterns, starting with Lexington introduced in 1941, both the Lotus and Magnolia patterns introduced in 1949, Blossom Time introduced in 1950, and both Iris and Quartette introduced in 1951. The supper sets consisted of plate and cup, spoon rest, egg plate, celery dish, relish dish and butter dish.

Village Green Provincial Dinner and Bakeware

Finally, the fourth use of provincial was in the Village Green line with a pattern specifically called Provincial Dinner and Bakeware. Introduced in 1963, the plates and accessory pieces of dinnerware were bright bittersweet in color, yet based on Village Green pattern shapes. The bakeware accessory pieces, however, were reintroduced from the 1941 Provincial Cookingware line with bean pots, casseroles, marmites and an egg dish. Red Wing modernized the exterior lid tops and interior pieces with the bright bittersweet color. The exteriors were the same terra cotta color, but unlike the 1941 pieces, they were bottom marked, not side-stamped.

Hopefully as collectors you will now have a better understanding of the term "provincial" and its multiuse in Red Wing dinnerware. ■

Special thanks to Dennis Cayler for submitting this article and Todd Hintz & Ivy Loughborough of redwingdinnerware.com and contributors for the photos.

Provincial Luncheonware



Lexington



Lotus



Magnolia



Quartette

Village Green



Provincial Dinnerware

IKE'S VISIT TO RED WING



It was 46 years ago this month when 20,000 people lined the streets of Red Wing to greet President Dwight D. “Ike” Eisenhower as he flew into town to dedicate the opening of the Hiawatha Bridge, which carries U.S. 63 across the Mississippi River between Minnesota and Wisconsin.

Fall 1960 was an exciting time with Vice President Richard Nixon in a close race with John F. Kennedy for the presidency. When Minnesota Republicans maneuvered for a presidential visit during the busy election time, the White House asked the Republican National Committee to identify nonpolitical affairs Eisenhower could attend. The bridge dedication was just what he needed.

Eisenhower’s legacy is much defined by his commitment to create a high-quality national interstate system. The system was renamed the “The Dwight D. Eisenhower System of Interstate and Defense Highways” in 1990 in his honor, and 2006 marks the 50th anniversary of Eisenhower signing the Federal-Aid Highway Act into law.

But in 1960, President Eisenhower’s last full year in office, the future of the interstate system remained uncertain. Ike wanted to leave the presidency knowing that financial problems would not end the program he worked so hard to build. Costs were up, while accelerating the program to fight a recession without the appropriate increase in funding left it in fiscal knots.

In October 1960, Eisenhower participated in a 9-day cross-country “nonpolitical” tour that included political events in support of Nixon’s presidential bid. He sandwiched his trip to Red Wing between an appearance at the National Auto Show in Detroit, and a visit to his childhood home of Abilene, Kan.



WHY RED WING?

For years, the city of Red Wing had wanted to replace the dated High Bridge, which was constructed in 1895. Although the new \$3.1 million Hiawatha Bridge was not part of the official Interstate System, the ceremony was a good opportunity for Eisenhower to refer to the bridge as “another example of Federal-State partnership in meeting both local and national needs.”

Between 500 and 1,000 people greeted Eisenhower as his helicopter descended at the Red Wing Industrial Park the morning of Oct. 18, 1960, and many more were spread out along the parade route into downtown Red Wing. A group of seven 8th grade girls were the first on the scene, arriving at 6 a.m. for a good viewing spot at the head of John Rich Park. Some people sought positions on or

around the new bridge as the President began to speak. A 12-year-old Lake City boy who had a bird’s-eye view of the dedication from the top of Barn Bluff became stranded on a cliff on the bluff’s north side shortly after the ribbon-cutting, but fortunately he was rescued by firemen who climbed to the summit of the bluff and lowered a 50-foot rope for the boy to tie around his waist.

THE SPEECH

Following an introduction of special guests and Minnesota leaders such as Senator Hubert Humphrey, Eisenhower took the podium. With signs stating things like “Well done, Mr. President” and “Thank you, Ike” being held by people in the audience before him, Eisenhower addressed the crowd.

“I welcome the opportunity to revisit Minnesota and attend these ceremonies here in Red Wing. It is a moving experience to stand here near the head of Lake Pepin and contemplate the craggy contours and rugged beauty of this part of the upper Mississippi Valley. This area through which Father Hennepin passed almost three centuries ago, and known for such romantic figures of the past as Red Wing, Wabasha and Winona, fills a large page in the proud heritage of American history.

“The dedication of this fine new bridge across the Mississippi is another effective example of Federal-State partnership in meeting both local and national needs. Hiawatha Bridge, now spanning the Father of Waters, is a part of our Federal-State highway program. While this particular partnership dates back over 40 years, to 1916, it assumed a tremendous new workload in 1956 with the enactment of the Federal-Aid Highway Act – a program which Vice President Nixon first publicly presented on my behalf at the 1954 Governors’ Conference.”

Eisenhower then discussed the progress of the interstate system and transitioned to Chief Hiawatha’s role as a founder of the United Nations (UN) organization in America – a league of five Iroquois tribes in the 16th century. In 1960, the modern-day UN was about to celebrate its 15th anniversary and Eisenhower spent a few minutes encouraging the crowd to continue placing its faith in the UN. He closed his speech with the following remarks:

“Only through the collective force of a strong and informed public opinion, united in its belief in the free spirit, shall we succeed. To your hands I commend this task, grateful that this structure, bridging a river between two commonwealths of our nation, and its name may ever symbolize the purpose of forging indestructible bonds between free people.”

“ I assure you that Mamie will like this present. She'll be proud to have this china. ”

-President Eisenhower upon receiving a 24-place setting of dinnerware from the Red Wing Potteries

Following the speech, general chairman Henry Swanson presented the President with an inscribed plaque from the Red Wing Advertising Company and a special gift from the Red Wing Potteries. As the *Red Wing Daily Republican Eagle* reported in that day's paper: "Red Wing's appreciation for the President's visit took concrete form in a 24-place, 200-piece dinner setting presented by Red Wing Potteries. 'I assure you that Mamie will like this present. She'll be proud to have this china,' the smiling Ike replied," referring to his wife.

Today the whereabouts of that entire set of Village Green dinnerware is unknown, but according to the Eisenhower Presidential Library, it was shipped to Gettysburg Farm, the Eisenhowers' home in Gettysburg, Pa, after they left the White House. The farm is now a part of the Eisenhower National Historic Site, which is operated by the National Park Service. Mamie most-likely used at least a portion of the dinnerware until her death in 1979, as Gettysburg Farm curator Michael Florer was able to find one well-used 8-inch Village Green casserole dish with a lid still being stored in the Eisenhowers' kitchen today.

IKE'S DEPARTURE

Shortly before 11 a.m., Eisenhower made his way to the bridge and snipped a red ribbon extending across the bridge's roadway before being escorted to the sidewalk downriver to take in a view of the bridge with Red Wing Mayor, H.E. Rardin.

Then, amidst the release of hundreds of multicolored balloons and the launching of fireworks, Ike rejoined his motorcade which drove across to the Wisconsin side of the newly opened bridge, and then back across to Red Wing, driving through town and waving to spectators on the ride back to the helicopter. Just as quickly as he had entered town, he was gone.

As the *Daily Republican Eagle* described the scene, "... (Ike) left behind him a carnival-like atmosphere in Red Wing with the big bridge opening crowd talking over little details of the first deliberate presidential visit to Red Wing since Rutherford B. Hayes was in the White House and stopped off at the St. James Hotel." ■

They like Ike: President Eisenhower, looking toward the Irish Row Houses at the intersection of Main and Broadway, delivers his Hiawatha Bridge dedication address to a large crowd.

Photograph courtesy of the Goodhue County Historical Society



Commemorative ashtray: The Red Wing Potteries issued this souvenir ashtray recognizing the dedication of the Hiawatha Bridge by President Eisenhower. It was known to be produced in four colors – green, red, yellow and light blue. RWCS member Dave Hutchson said his father, Teddy

Hutchson, designed the piece. According to Ray Reiss's book, *Redwing Art Pottery*, the ashtray was sold by the Red Wing chapters of the Eastern Star and the Rosary Society. Approximately 3000 were reportedly sold on the day of Ike's visit, and the leftovers were sold later at Red Wing's Salesroom.



Special thanks to the following for providing information and other materials: Jon Henslin, RWCS member and Minnesota DOT employee; Sharon Schroeder, Goodhue County Historical Society; The Red Wing Public Library; The Dwight D. Eisenhower Presidential Library; Dave Hutchson, RWCS member; Michael Florer, Eisenhower National Historic Site. Resources: "Crowd of 20,000 Greets President at Dedication of Hiawatha Bridge" "Red Wing Daily Republican Eagle," October 18, 1960; "The Man Who Changed America, Parts I & II" by Richard F. Weingroff. "Public Roads" Mar/Apr and May/June 2003 – the bimonthly magazine of the Federal Highway Administration; "Red Wing Art Pottery" by Ray Reiss.

Golden State Chapter

1 p.m. Saturday, Dec. 9 at the home of Ralph & Denise Nelson, 3026 Keogh Ct., Visalia, CA 93291. E-mail gsredwing@aol.com for more information.

Southwest Redwings

6:30 p.m. Monday, Oct. 30 at the Robert Neiman home, 17331 N. Stone Haven Drive in Surprise, AZ. Call 623-583-4178 for more information.

6:30 p.m. Monday, Nov. 27 at Ed and Louise Gass home, 16412 W. Monteverde Drive in Surprise, AZ. Call 623-544-9171 for more information.

Sunshine State Redwings

1 p.m. Saturday, November 11th at the home of Anne and Don Ashauer, 604 Ohio Blvd., in Eustice, FL. For directions, call 352-483-0790.

For information regarding Florida Chapter membership, contact Darlene Duecker at ssrw@bellsouth.net or 954-560-9622.

Trails West Chapter

1 p.m. Saturday, Oct. 21 – Octoberfest at the Nancy and Wayne Lamberts home, 1808 N. 300 Road, Baldwin City, KS. The meeting will follow a German lunch. Call 785-594-3020 or e-mail nlf@grapevine.net for more information. (That weekend is also the Maple Leaf Arts and Crafts Festival in Baldwin, for those interested.)

Did we miss you? Contact editor Rick Natynski with your chapter news and upcoming meeting dates before Nov. 15 to be included in the December Newsletter.



Say "Sunshine!"

Sunshine State chapter members pose during a 2006 meeting.

Show & Tell:

Ken Duecker shows off his favorite piece of dinnerware.



SUNSHINE STATE REDWINGERS

Anne Ashauer from the Sunshine State Redwings reports: "We have more than 20 active members and several 'snow birds.' Our meetings are getting pretty interesting with showing and telling and silent auctions. We're thinking of having an outing for a day with a few antique stores and a tour through a theme park. Our meetings have been held at a country club, seeing as we have so many here in Florida.

"With us being in the Sunshine State, we voted on our chapter name being 'The Sunshine State Redwings.' Now we are getting our banner, buttons and our chapter logo. I feel for just getting started we have come a long way. We also will be getting started on a commemorative. This is in the works.

"Our president, John Dougherty, is a very educated man of Red Wing pottery and he's a big plus to the chapter. He has a few treasured pieces and knows a lot of history on the pottery. Needless to say, when he speaks, everyone listens. We have a lot of lifelong Red Wing lovers and some newer collectors, including my husband, who has been a collector for only few years but has a huge collection of stoneware from Sleepy Eye to Minnesota Stoneware."

WOLVERINE CHAPTER

The Wolverine Chapter still has RWCS window clings from Convention 2006 for sale for \$2 a piece plus postage. The clings are an exact replica of the RWCS logo and adhere to the inside of any clean glass surface by static electricity. They do not require glue. Anyone interested should contact: Charlotte Ackerman, 1256 East Chippewa River Road, Midland, MI 48640. E-mail is chardave@charter.net and phone is 989-832-2527.

TRAILS WEST CHAPTER

Chapter quilt blocks for the RWCS quilt to be raffled for the 30th Anniversary Convention are due November 1. The quilt will be assembled by Linda Russell, Trails West Chapter, 31269 Croco Rd., Melvern, KS 66510. Instructions were handed out at the chapter presidents meeting in Red Wing during Convention. If you cannot locate yours or you have questions, contact Linda at tctraders@earthlink.net or 785-549-3435.

ILLINOIS CHAPTER

Twenty Red Wingers were present for the Oct. 1 Illinois Chapter meeting, which was hosted by Dave Kuffel. Everyone enjoyed looking at Dave's collection before a pot luck lunch and after the chapter's business meeting. Topics covered included next year's chapter commemorative, the chapter's newsletter and creating a square for the Trails West Chapter's quilt project. In addition, RWCS Foundation Board member Steve Muehleck, who was visiting from Washington, joined Dave in discussing current Foundation projects.



All smiles: Illinois Chapter members proudly display their banner during their Oct. 1 meeting.

INDIANA WINGERS

The big news from the Indiana Wingers is its official recognition at the 2006 Convention as the Society's 15th chapter. Members present enjoyed presenting their chapter banner and were delighted to receive their charter. The group welcomed 14 charter members at its first meeting in April and it's looking forward to attracting more as word of the new chapter spreads.

Indiana Chapter meetings take place on the last Saturday in both April and September. Next year's April meeting is slated for April 28. As a fundraiser, the chapter is offering a great miniature metal stand built to hold the 2005 self draining jar commemorative that can also be easily adapted to display the 1984 and 1985 water coolers. For information about the chapter or the commemorative cooler stands, please contact John or Sue Ingwersen at JHenryIng@aol.com or 317-823-8543. The price is \$25 and includes Priority mail shipping from Indianapolis to anywhere in the US.

GOLDEN STATE CHAPTER

The September meeting of the Golden State Red Wing Chapter was in Walnut Creek, Calif. at the home of Kathy & Denny Decker. This was its 20th Anniversary meeting. The first meeting was Sept. 29, 1986, which was also at the home of Kathy & Denny. Our chapter was ratified by the Red Wing Collectors Society at the July meeting in 1987. Twenty five members were in attendance at the anniversary meeting, five of whom were part of the original 21 charter members.

Our traditional Christmas Meeting will be at the home of Denise & Ralph Nelson in Visalia, Calif. on December 9. All of our meetings are at 1 p.m. Anyone wishing to attend can contact Mike Robinson at 209-471-4083 or MRob3808@aol.com for further details on the locations.

WISCONSIN CHAPTER

More than 40 people enjoyed the beautiful fall colors at the Sept. 29 Wisconsin Chapter meeting, which began with a tour of a Wisconsin Rapids-area cranberry farm. Lunch and a business meeting followed just down the road at the Rainbow Casino, where members discussed hosting a hospitality room if the 2008 MidWinter GetTogether is held in Wisconsin. The chapter's 2006 commemorative, a chicken feeder boasting advertising from Durand, Wis., was unveiled, and during the Show & Tell, member Maxine Paxton shared photos and talked about her and husband Bill's collection of stoneware chicken feeders.

CANNON VALLEY CHAPTER

Connie Kolberg from the Cannon Valley Chapter reports: "Seventeen members attended our annual Pot Luck Dinner during our September meeting, which was held at Steve and Phyllis Showers' house. We all enjoyed the tour of Phyllis's beautiful garden. What a spectacular job she has done! The food was scrumptious and we all enjoyed the stories. We also had a fun silent auction. The mosquitoes didn't even seem that bad. A big 'thank you' to the Showers and all that attended."

GET READY TO HAVE FUN! MIDWINTER GETTOGETHER FEBRUARY 9-11, 2007

by Stacy Wegner, RWCS Business Manager

Have you started your plans to attend the MidWinter GetTogether, February 9-11, 2007 in Des Moines? Bring your celebration and party favors because we are ringing in the Chinese New Year at MidWinter!

All RWCS members will have two new services available to them when registering for RWCS events in 2007. When registering for MidWinter 2007, members will have the ability to pay for their registration with credit cards in addition to checks. Also, by early November, members will be able to register for MidWinter online by simply logging on to the RWCS Web site: www.redwingcollectors.org. Directions telling how to register, request a seller's table and renew your membership online will be posted. The RWCS Web site will accept MasterCard, Visa and Discover. We hope adding online registration to the existing mail and fax options will make the process more convenient for everyone.

We're looking for volunteers to help out at the MidWinter, so please call the RWCS Business Office at 651-388-4004 or 800-977-7927 to offer your assistance. In addition, we want to create an exhibit and a slideshow that will review the history of Convention, so please call us if you have pictures to



share or you'd just like to help out.

For those of you who are interested in operating a seller's table at MidWinter, requests must be received by January 11 in order to receive a contract. Remember that Show & Sale space is limited at MidWinter and will be assigned on a first-come first-served basis.

You can be assured that the 2007 MidWinter GetTogether will be jam-packed with education sessions, a Show & Sale room filled to capacity and a great auction to start the year off right! But most importantly, it will be fun, as there will be a preview to the RWCS 30th Anniversary Celebration at the July Convention.

MIDWINTER LODGING INFORMATION

Location: Holiday Inn Hotel & Suites
4800 Merle Hay Road, Des Moines, IA 50322
Phone: 515-278-4755

For reservations: call 800-HOLIDAY and indicate you are a RWCS MidWinter attendee and/or a room seller.

Deadline: January 18th, 2007 for the room block (up to 4 guests per room). Floors 1-4 are designated non-smoking and floor 5 is smoking.

Types of Rooms:

Standard: 2 Queen beds or 1 king bed at \$64 per night + 12% tax
Junior Suite: 1 king bed and 1 sleeper sofa at \$94 per night + 12% tax (About 1½ rooms with large bedroom and small living room)
Extended Stay Suite: 1 king and 1 sleeper sofa at \$105 per night + 12% tax (About 1½ rooms with small bedroom and large living room)
Family or Parlor Suite: 1 king and 1 sleeper at \$126 + 12% tax (The size of two rooms with a big dining room table and kitchen area)
Whirlpool Suite: \$146 + \$12% tax

New this year for Room Sales – Furnishing Packages

Sellers Package: \$15 per night: one 6-foot table clothed with 3 chairs
Deluxe Package: \$28 per night two 6-foot tables clothed with 6 chairs and easel

If you are interested in securing a Furnishing Package for MidWinter for your room sales, please contact Donna Lynde at the Holiday Inn & Suites at 515-727-0402 or dlynde@kinseth.com to reserve a package.

MIDWINTER 2007 SCHEDULE OF EVENTS

MidWinter GetTogether 2007
February 9-11, 2007
Holiday Inn & Suites
Des Moines, Ia.

Deadline for pre-registration: January 19

Sellers Table request deadline: January 11, returned by the 29th

Theme: Chinese New Year

Friday, February 9

Board of Directors Mtg.	1-5 p.m.	
Registration	1-8 p.m.	Lobby
Room Sales	All day	
Social Reception	7-11 p.m.	Heartland Ballroom

Saturday, February 10

Registration	7-10 a.m.	Lobby
Continental Breakfast	7-8:30 a.m.	Heartland Ballroom
Welcome/General Session	8:30-9:30 a.m.	Heartland Ballroom
Education Seminars Session 1	9:40-10:30 a.m.	Room TBD
Education Seminars Session 2	10:40-11:30 a.m.	
Show & Sale	1-4 p.m.	Heartland Ballroom
Auction	6 p.m.	Heartland Ballroom

Sunday, February 11

Continental Breakfast	7-9 a.m.	Room TBD
-----------------------	----------	----------



Pre-Registration MIDWINTER GET TOGETHER

Feb. 9- 11, 2007
Holiday Inn & Suites
Des Moines, IA

Submitting Member Information

Member Number: _____

Name: _____
Last Name *First Name*

CHECK HERE IF YOUR ADDRESS HAS CHANGED.

Address: _____

Phone: _____ **Email:** _____

Deadlines:

Registration Form:

January 19, 2007

Sellers Table Request:

January 11, 2007

Member Registration 1:

Number *Last Name* *First Name*
Registration: Adult:\$20 Child: FREE _____

Membership Renewal:

Primary \$25 (1 yr) \$50 (2 yr) _____ **Total Reg 1**
Associate \$10 (1yr) \$20 (2 yr)

Member Registration 2:

Number *Last Name* *First Name*
Registration: Adult:\$20 Child: FREE _____

Membership Renewal:

Primary \$25 (1 yr) \$50 (2 yr) _____ **Total Reg 2**
Associate \$10 (1yr) \$20 (2 yr)

Member Registration 3:

Number *Last Name* *First Name*
Registration: Adult:\$20 Child: FREE _____

Membership Renewal:

Primary \$25 (1 yr) \$50 (2 yr) _____ **Total Reg 3**
Associate \$10 (1yr) \$20 (2 yr)

Grand Total _____

SELLER'S TABLE: Please send me a seller's contract for Saturday sale. (\$25/table)

Antiques (90% Antiques) **Souvenirs** (90% souvenirs)

Due to limited space, all tables are sold on a first-come, first-served basis. You must enclose a self-addressed stamped envelope to get your contract. **Signed Contract and sales tax permit must be postmarked by January 26, 2007**

Easy Ways to Register

1. Online (November):

www.RedWingCollectors.org

2. Fax: 651-388-4042

3. Mail: RWCS, PO Box 50,
Red Wing, MN 55066

Method of Payment:

MC VISA Discover CHECK (enclosed payable to RWCS)

Name: _____

Card Number: _____

Last 3 digits on back: _____ **Expiration Date:** _____

Signature: _____

Classified ads are 15¢ per word; \$3 minimum charge.

Ads are divided into the following sections: Red Wing For Sale, Red Wing Wanted, Other Pottery For Sale, Other Pottery Wanted, Events, Clubs, Auctions, Publications & Web Sites, Announcements and Services. You will not be charged for these words, but please indicate which section your ad should be placed in. If ad is to run in more than one issue please indicate at time of placement. (Note: the small number at the end of an ad tells when the ad expires, e.g., 12/06. Ads without dates are one-time ads.) Please type or print clearly and proofread before submission.

DISPLAY ADS

Display Ad Size	1x	6x
Full page	\$400	\$360
1/2 page (<i>horizontal or vertical</i>)	200	180
1/4 page	100	90
1/8 page	60	45

Display Ad Dimensions	
Full Page	7 1/2 x 10
1/2 page (<i>horizontal or vertical</i>)	7 1/2 x 4 7/8
1/4 page	3 5/8 x 4 7/8
1/8 page	3 5/8 x 2 1/4

Display Ads are accepted on a first-come, first-served basis. The publisher reserves the right to refuse ads for any reason.

The Newsletter is produced on a PC in Adobe InDesign. Ads must be supplied electronically as an EPS or PDF file for PC. Be sure to include all fonts used. If you are unsure about acceptability, inquire with the Editor. There is an additional 10 percent fee for design and makeup if needed. Camera-ready ads are not accepted. Unformatted or unreserved ads will be treated as classifieds.

DEADLINES

Issue	Ad Deadline	Editorial Deadline
February	Jan. 10	Jan. 1
April	March 10	March 1
June	May 10	May 1
August	July 25	July 15
October	Sept. 10	Sept. 1
December	Nov. 10	Nov. 1

EDITOR ADDRESS

Make checks payable to RWCS and mail with ads to:
 Rick Natynski
 General Delivery: USPS
 13425 Watertown Plank Road
 Elm Grove, WI 53122-9998

RED WING FOR SALE

Handles and wooden lids. Send SASE for flyer to Larsen's Collectibles, 757 120th Street, Hampton, Iowa 50441-7555. Phone 641-866-6733. 12/06

Commemoratives: 1977, \$2,300; 1979, \$2,100; 1988, \$80; 1990, \$75; 1992, \$65; 1993, \$80; 1994, \$90; 1995, \$80; 1996, \$80. Call Art at 515-987-4635. 12/06

8 gallon churn – ski oval, \$3,000; brown top 2 gal wing jug, \$550; 1/2 gal dome top fruit jar, \$2,600. Advertising beater jars: Redfield, S. Dak., \$250; Berlin, Wis., \$275; Fennimore, Wis., \$325; Cushing, Wis. \$350; Madelia, MN \$350; Blackhawk, Wis. – possible ghost town; \$450. Crocks 1 through 30 gal, churns 2 through 8 gal and water coolers 2 through 10 gal. Call Sid at 701-749-2586.

Commemoratives: 1997-2006, also the 1995 giraffe. \$1,000 takes all. Red Wing Newsletters 1993 through 2006. A few issues missing. Mint condition - \$250 for all. Call Vera at 262-691-9878.

Red Wing Art Pottery Giraffe planter #896, 11 inches tall, mint condition, \$325 plus shipping. Call Carol at 507-643-6181.

Commemoratives: 1981, \$465; 1982, \$600; 1984, \$350; 1985, \$300; 1988, \$95; 1989, \$240; 1990, \$75; 1991, \$95; 1992, \$60; 1993, \$80; 1994, \$65; 1995, \$70; 1996, \$90; 1997, \$85; 1998, \$90; 1999, \$60; 2000, \$85; 2001, \$80; 2002, \$80; 2003, \$70; 2004, \$70; 2005, \$85; 2006, \$80. Call evenings 320-253-2696.

Complete set of Red Wing Collectors Society Commemoratives 1977-2006. \$6,000. Call Dennis at 402-371-0483.

RED WING WANTED

Advertising bowls/stoneware from Mineral Point, Dodgeville, Darlington, or Shullsburg, Wisconsin. Also interested in any other southwestern cities. Call Darlene at 954-560-9622 or e-mail ssrw@bellsouth.net 2/07

2 gal wing ball lock jar, advertising cherryband pitchers, 1 gal fruit jar, new churn lids 3-5-8 gallon size. Call Sid at 701-749-2586

Family member looking for Red Wing bean pot and/or milk pitcher from Ormsby, MN with Myron or Olaus Syverson name on it. Also looking for other collectibles with these names on them. If interested in selling, please call Tim at 507-537-0701. 2/07

Looking to buy quality stoneware - one piece or entire collections. Also wanted: beehive jugs, unique pieces with ski ovals, salt glaze Success Filter tops or bottoms and RW advertising from Galena, Illinois. Contact Scott at cobe142@cox.net or 402-598-1315.

Racine, Wis. advertising wanted, especially Red Wing advertising from Racine stores. Call Jim at 262-554-0488 or e-mail horlick@wi.rr.com 2/07

Want to learn about the existence of any advertising pieces from Knapp, Wisconsin. To sell or share information, please contact Tim at twyss@clearlake.k12.wi.us or 715-263-2118. 2/07

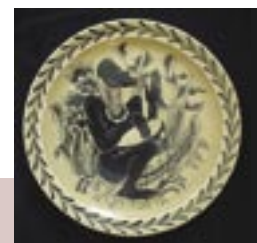
4 gal Red Wing Success Filter top and lid. Must be blue sponge. Call Art at 515-987-4635. 12/06

RW bean pot with "Fone Fish For Food, Whitewater, Wis." advertising. Contact Rick at 414-416-9464 or rwcnewsletter@wi.rr.com

RECENT FINDS & DEALS

Did you find a rare piece or a great deal worth sharing? Briefly describe the item, where it was sold, date purchased, venue (store, auction, etc.) and price paid. Send in on a post card, or if you'd like to include a photo for publication, e-mail rwcsnewsletter@wi.rr.com, or enclose in an envelope. Multiple submissions result in multiple entries in the Newsletter Special Commemorative Lottery at the 2007 Convention. Send to the editor at the address on page 2. All entries received between July 2006 and June of 2007 are eligible whether published or not. Please keep submittals with purchase dates within six months of the newsletter issue.

ITEM	LOCATION	DATE	VENUE	PRICE
Nokomis raised #212 vase (had been painted green and black)	Watertown, Wis.	6/06	Yard sale	\$1
8½-inch 1963 Trader Vic's Fogcutter Mug, painted relief in a tan fleck background, mint	Crowley, Tex.	7/06	Antique mall	\$1
Experimental Vintage Pattern True China 10-inch single tier tidbit plate w/series of numbers on back	Willmar, Minn.	7/06	Thrift store	\$2
20 lb. butter crock w/large wing two small rim chips	Onamia, Minn.	8/06	Farm Auction	\$725
3 gal beehive jug, no wing or oval, chip in spout	Southcentral Wis.	8/06	Antique mall	\$35
3 gal beehive jug w/wing, no oval, chip in neck	Fox Lake, Ill.	8/06	Yard sale	\$45
5 lb. butter crock w/"Eder's Arcade Store, Blue Earth, MN" adv.	Winnebago, Minn.	8/06	Auction	\$625
RW stoneware bowl w/art deco design bottom signed "Red Wing Pottery"		9/06	eBay	\$500
12 gal RW salt glaze leaf crock, cracks	Council Bluffs, Ia.	9/06	Auction	\$70
Union Stoneware 3 gal Ice Water cooler w/lid	Watertown, Wis.	9/06	Private sale	\$1,600
RW Flower pot saucer No. 7	Jefferson, Wis.	9/06	Auction	\$15
RW Charles Murphy African Native Plate		9/06	eBay	\$1,025



CLUBS AND PUBLICATIONS

New stoneware book (*Antique Trader Stoneware Price Guide*); includes Red Wing; Monmouth-Western; Blue/White; Eastern U.S. 288 pages; colored photos; \$20 postage paid. Gail Peck, 2121 Pearl, Fremont, NE 68025; 402-721-5721.

12/06

NEW 2006 values for both *Red Wing Stoneware* and *Red Wing Collectibles*! \$9.95 each or \$17.95 for both plus \$1.50/\$2 postage, respectively. Quantity discounts available. Gail Peck, 2121 Pearl, Fremont, NE 68025; 402-721-5721. 12/06

MONSTER CROCKS

By Rick Natynski

Imagine looking out your window one day and seeing large concrete objects sitting on the road in front of your home. Dropped off by the city, these objects are storm sewer tiles to be buried in the ground in a few days, but for those few days you'll be stuck looking at them.

After staring at them for awhile, you begin to notice they look strikingly similar to the crocks and churns scattered throughout your home. At this point, there's probably more than a few Red Wing collectors out there who would conjure up the idea of painting the tiles to look like stoneware, but how many would actually follow through with it?

Mark down RWCS member Chris Anderson of Little Falls, MN as one of those people.

Knowing he had a limited amount of time to create his masterpiece, and with the encouragement of his wife, Kelsi, he quickly created stencils of Red Wing decorations and went to work. The short, squatty crock, he decided, resembled a 20 lb. butter crock. He made the biggest tile a 50 gallon elephant ear crock (now that's a rare one) and the narrow, cylindrical tile a 2 gallon birchleaf churn.

Chris was fully intending to paint the tile on the far right to resemble a Red Wing Christmas Tree stand, but he decided to oblige a neighbor



Chris and Kelsi Anderson pose with their dog in front of some "custom-made" stoneware.

who wanted to see a smiley face drawn on the side.

The entire neighborhood got a kick out of Chris' efforts, and when all was said and done, the Andersons briefly had in their collection some of the largest Red Wing crocks ever seen. In a day and age where some people are so busy with their daily lives that they don't even take time to eat lunch, it's great to see there are people out there who still take the time to enjoy themselves. A big thanks to Chris and Kelsi for submitting this photo from their fun experience! ■

COMING IN THE DECEMBER ISSUE...



COLLECTING ON A SMALL SCALE

WATKINS' ADVERTISING



A LOOK BACK AT THE CHAPMAN AUCTION