



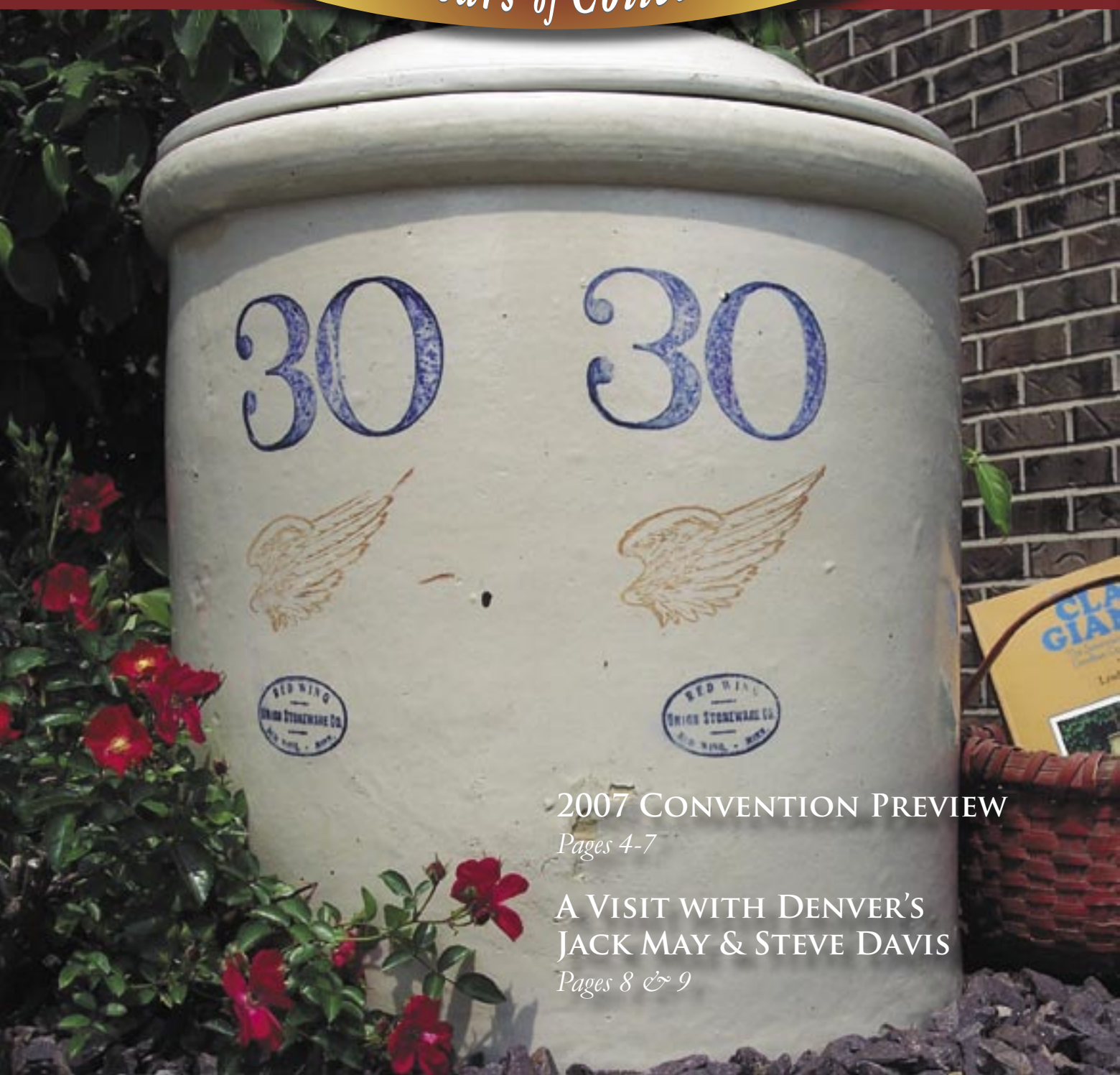
1977

2007

VOL. 32 NO. 3

30 Years of Collecting

JUNE 2007



2007 CONVENTION PREVIEW

Pages 4-7

A VISIT WITH DENVER'S
JACK MAY & STEVE DAVIS

Pages 8 & 9

RWCS CONTACTS

RWCS BUSINESS OFFICE

PO Box 50 • 2000 Old West Main St. • Suite 300
Pottery Place Mall • Red Wing, MN 55066-0050
651-388-4004 or 800-977-7927 • Fax: 651-388-4042
BUSINESS/CONVENTION MANAGER: STACY WEGNER
RWCS1@REDWING.NET
ADMINISTRATIVE ASSISTANT: LORI ANDERSON
RWCSMEM@REDWING.NET
Web site: WWW.REDWINGCOLLECTORS.ORG

BOARD OF DIRECTORS

PRESIDENT: SUE JONES TAGLIAPIETRA
2219 Lakeland Ave. • Madison, WI 53704-5636
608-241-3072 • RWCSJIT@YAHOO.COM

VICE PRESIDENT: JOLENE McKOON
3124 4th St., Unit 8 • Moline, IL 61265
309-797-3894 • JMCKOON@ATT.NET

SECRETARY: PAULETTE FLOYD
208 E. Somonauk • Yorkville, IL 60560
630-553-9234 • PJFLOYD@SBCGLOBAL.NET

TREASURER: MARK COLLINS
7312 Lake St. • Omaha, NE 68134
605-351-1700 • MARKCOLLINS@COX.NET

HISTORIAN: STEVE BROWN
1816 Sakenda Rd. • Buffalo, MN 55313
763-684-2400 (after 5 p.m.) • BIGPAWS@CHARTER.NET

REPRESENTATIVE AT LARGE: RUSSA ROBINSON
1970 Bowman Rd. • Stockton, CA 95206
209-463-5179 • RRUSSA@AOL.COM

REPRESENTATIVE AT LARGE: JERRY ERDMANN
W15416 Fair-Morr Rd. • Tigerton, WI 54486
715-535-2094 • JJERD@FRONTIERNET.NET

AUCTION MANAGER: JEFF FLOYD
208 E. Somonauk • Yorkville, IL 60560
630-553-9234 • PJFLOYD@SBCGLOBAL.NET

CO-COMMEMORATIVE MANAGERS: JOHN TREMBLE
942 Becky Circle • Hudson, WI 54016-7509
715-381-0006 • RWCSMEMORATIVE@HOTMAIL.COM

MATT HUEPFEL
RWCSMEMORATIVE@HOTMAIL.COM

INTERIM EDUCATION MANAGER: TERRY SPEEDY
5079 S. Seymour Rd. • Swartz Creek, MI 48473
810-938-3228 • THESPEEDYS@TCWIRELESS.US

JULY CONVENTION SUPPORT PERSONNEL:
Pre-registration – DONNA & CHUCK HANSON
Show & Sale – CINDY & PETE MAY
423-639-2477 • RW3PCMAY@EMBARQMAIL.COM
Display Room – JULIE & GLENN BEALL
712-644-2256 • GBEALL@LOGANET.NET

IN THIS ISSUE.....



PAGE 3	NEWS BRIEFS, ABOUT THE COVER
PAGE 4	2007 CONVENTION PREVIEW: MANAGER REPORT, MAP
PAGE 5	2007 CONVENTION PREVIEW: SCHEDULE
PAGE 6	2007 CONVENTION PREVIEW: MANAGER REPORTS
PAGE 7	2007 CONVENTION PREVIEW: KIDS VIEW, DISPLAY ROOM
PAGE 8	A VISIT WITH DENVER'S JACK MAY AND STEVE DAVIS
PAGE 10	THE CROCKMAN WHO NEVER VISITED RED WING
PAGE 12	PROPOSED RWCS BYLAW REVISIONS
PAGE 14	CLASSIFIEDS
PAGE 15	RECENT FINDS & DEALS, PHOTO TO THE EDITOR
PAGE 16	1964 RED WING POTTERIES EMPLOYEE RULEBOOK

MEMBERSHIP

A primary membership in the Red Wing Collectors Society is \$25 annually and an associate membership is \$10.

There must be at least one primary member per household in order to have associate membership. Members can pay for more than one year when renewing their membership. Contact the RWCS Business Office for additional details.

NEWSLETTER EDITOR

RICK NATYNSKI
GENERAL DELIVERY: USPS • 13425 WATERTOWN PLANK ROAD
ELM GROVE, WI 53122-9998
RWCSNEWSLETTER@WI.RR.COM 414-416-WING (9464)

The Red Wing Collectors Society, Inc. Newsletter is published bi-monthly by the Red Wing Collectors Society, Inc. Suite 300 • 2000 West Main Street Red Wing, MN 55066.
Phone: 651-388-4004 Fax: 651-388-4042
WWW.REDWINGCOLLECTORS.ORG

Postmaster: Send address change to: Red Wing Collectors Society, Inc. Newsletter
PO Box 50 • Red Wing, MN 55066. USPS 015-791; ISSN 1096-1259.

Copyright © 2007 by the Red Wing Collectors Society, Inc. All rights reserved.
The Red Wing Collectors Society, Inc. does not guarantee the accuracy of articles submitted by individual members.

NEWS BRIEFS

VOLUNTEERS NEEDED TO SELL QUILT RAFFLE TICKETS

Volunteers are needed to sell tickets in Red Wing during Convention for the RWCS Chapter Quilt project initiated by the Trails West Chapter. Proceeds will benefit the RWCS Foundation. To volunteer, contact Harley Thompson by the end of June at HATCRTHOM@AOL.COM or 510-724-0351, or contact the RWCS Business Office up until Convention. Tickets will be \$5 each and the drawing will take place on Friday afternoon, July 13 at the Annual Business Meeting at Red Wing High School. For more information about the Quilt Raffle, turn to page 6.

WHAT REALLY HAPPENED TO EISENHOWER'S VILLAGE GREEN DINNERWARE?

In the October 2006 issue of the *Red Wing Collectors Society Newsletter*, we looked back at President Dwight D. Eisenhower's 1960 visit to Red Wing, where he dedicated the opening of the Hiawatha Bridge connecting Minnesota to Wisconsin. After some digging, we found that the whereabouts of the set of Red Wing Village Green Dinnerware that was gifted to him and his wife, Mamie, was unknown, except for a casserole dish that was found at Gettysburg Farm – the Eisenhowers' home after leaving the White House.

Now, thanks to a letter sent in by Dennis Medina, curator at the Eisenhower Presidential Library in Abilene, Kansas, we know what happened to that set:

"Thank you for sending the two copies of your newsletter. I was unfamiliar with your name and the reference to the article. Upon checking our reference log, I find that your call was received and handled by Dwight Strandberg back in September. Unfortunately, Mr. Strandberg relied exclusively on records from the White House and assumed the materials were sent as indicated on the Gift Unit card to the White House. The pottery did go to the Eisenhower Farm in the 1960s and was used by Mrs. Eisenhower on varied occasions. Upon Mamie's death, Julie Nixon Eisenhower was to have received the set of pottery. However, due some mix-up in shipping arrangements, all of the pottery was sent to the Eisenhower Museum. However, all of the cups were sent to Julie. Over the years I worked on getting the items deaccessioned for Julie to have the set; but by the time I accomplished this matter, the cups had all been broken.

"Therefore, your quest to know where the pottery is today; for the most part, minus the cups, the set is here in our collection."



ABOUT THE COVER

No, you're not seeing double. There are likely thousands of 30 gallon Red Wing zinc glaze crocks out there, but it's safe to say that very few are double-stamped with the number, wing and oval, and even fewer have the stamps so close together. Often, double-stamped pieces were stamped on the front and back and displayed in storefront windows so the decoration could be visible both inside and outside the store. Exactly why these stamps are within inches of one another, perhaps we'll never know. We can only be thankful that someone working at the stoneware company made it that way.

With 2007 being the "30"th Anniversary of the Red Wing Collectors Society, this eye-catching piece is the perfect selection to grace the cover of the June Newsletter. Thanks to the Weiss family of Pocahontas, Ill. (Roger, Carol, Abby, Miranda & Maggie) for sending in the beautiful pictures of this fantastic piece.

ATTENTION CONVENTION FIRST TIMERS!

If 2007 will be your first time attending the Red Wing Collectors Society Convention, there is lots to see and do! Start your first Convention experience out right by attending an Orientation Seminar led by longtime RWCS member Russ Johnson. Russ will discuss all of the activities that are lined up and offer tips on making the most of your Convention experience.

Time: 9 a.m. Thursday, July 12

9 a.m. Friday, July 13

Place: Red Wing High School Choir Room, located just down the hall from the registration area.



STACY WEGNER

Business & Convention Manager

Greeting members! Convention is fast approaching and the registrations are coming in at a rapid pace. We are planning an exciting convention for this special RWCS anniversary and are excited to see all of you in Red Wing again.

We were hoping to have the annual Potter's Picnic at the new Pottery Pond Park to celebrate the addition of the pottery interpretative walk, but it was decided to keep it at Colvill Park for this year to ensure proper facilities, parking and easy access for members.

Many members have pre-ordered the 30th Anniversary Tile! The tiles will be distributed in the Courtyard Café area at Red Wing High School. As it is with the commemorative, the person who mailed in the Convention registration will have a voucher included with their badge to pick up their tile. There will be a limited number of tiles available for sale at Convention for \$35 each.

As was displayed at MidWinter and advertised in the April Newsletter, City of Red Wing 150th Anniversary planter crocks were available for pre-order through the Business Office this year to pick up at Convention. For those of you who ordered one, you can pick it up in the Courtyard Café area as well. Please make sure you bring your receipt with you to claim your planters.

The 30th Anniversary Committee will sell raffle tickets for some special prizes at the 2007 Convention, including the set of sample 30th Anniversary Tiles. Also, Associated Bank donated a lodging package for the 2008 Convention. Each ticket will cost \$1 and proceeds will benefit the RWCS Foundation.

For many of you, the 2007 Convention will mark your only annual visit to Red Wing. There are a few new places to eat and shop in Red Wing since last year. The new Culvers is now open in Red Wing located at the bottom of they hill by Wal-Mart. Also new in Red Wing is a Starbucks located near the Red Wing Mall.

Finally, as you are reading this newsletter, the City of Red Wing is busy celebrating its sesquicentennial with two weekends jam-packed with fun for all its residents. The first weekend (June 15-17) was filled with both local talent as well as a concert by the Guess Who. The second weekend (June 29-30) will feature a city-wide Lions' Chicken feed, old fashion parade, 1812 Overture with muzzle gun display and river paddle boat tours.

The city of Red Wing is excited for RWCS members to come and celebrate the Society's 30th Anniversary. Check your supplement for more informtion!

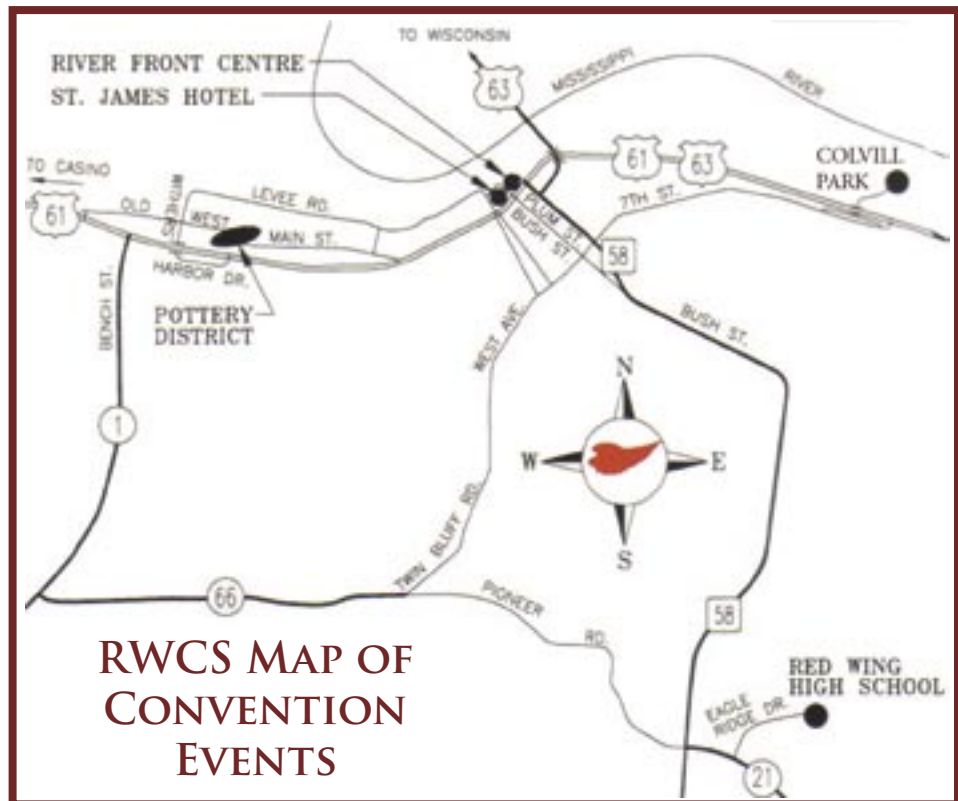


A NEW COLLECTOR IS BORN!

On behalf of the Society, congratulations to Stacy and Luke Wegner for bringing their daughter into the world! Labor started at 2:30 a.m., and after all attempts at a natural child birth, Flora Helen Wegner finally made her appearance via C-section at 11:08 p.m. April 26.

Flora weighed in at 8 pounds and 14 ounces and was 21 inches long. She has lots of dark hair like her daddy and looks a bit like both of them and is, of course, adorable. We look forward to seeing Flora bidding on her first piece of Red Wing at this year's Convention.

- Sue Jones Tagliapietra, RWCS President





2007 ANNUAL RWCS CONVENTION SCHEDULE

RED WING HIGH SCHOOL - RED WING, MN

TIME	ACTIVITY	LOCATION
Wednesday, July 11		
8:00 – noon	Board of Directors Meeting	L 100
11:00 – 3:00	Brat Feed (includes early badge pick up for those who are pre-registered) Sponsored by Pottery Place	Pottery Place Mall
noon – 3:00	Auction Check-In, Catalogs for Sale	Gymnasium
Thursday, July 12		
8:00 – 4:00	Ephraim Pottery Demonstration, Courtyard Café Open	Courtyard Café
8:00 – 4:00	Set up the Display and Rare Items	J 100 Pod
8:00 – 7:00	Registration (includes Anniversary Tile pickup & raffle sales)	Courtyard Café
8:00 – 10:00	Chapter Presidents Meeting	L 100
8:00 – 10:00	Commemorative Distribution	H 100 Pod
8:00 – 11:00	Auction Check-In	Gymnasium
8:00 - ???	Distribution of Bid Numbers; Auction Catalog for Sale	Gymnasium
9:00 – 3:30	Sale of Educational Materials	Courtyard Café
9:00 – 10:00	Orientation for First Timers	Choir Room C-100
10:30 – noon	Welcome Session/Keynote Address	Auditorium
11:00 – 12:30	Bus Tour Registration (at Information Table)	Courtyard Café
12:15 – 1:00	KidsView Auction Check-In	Auditorium
12:15 – 4:15	Auction Preview	Gymnasium
12:30 – 3:00	Historical Red Wing Bus Tour – Departs/Returns High School	Doors by Auditorium
1:00 – 2:00	Chapter Meetings and Hospitality Rooms	To Be Posted
1:00 – 3:30	KidsView Seminars and KidsView Auction	Art Room/Auditorium
1:00 – 4:00	Commemorative Distribution	H 100 Pod
4:30 – ???	Auction	Gymnasium
5:30 – 8:00	View Displays	J 100 Pod
Friday, July 13		
8:00 – 3:20	Registration (includes Anniversary Tile pickup & raffle sales)	Courtyard Café
8:00 – 3:30	Ephraim Pottery Demonstration, Courtyard Café Open	Courtyard Café
9:00 – 10:50	Commemorative Distribution	H 100 Pod
8:30 – 3:20	Displays Open	J 100 Pod
9:00 – 3:20	Sale of Educational Materials	Auditorium Hallway
9:00 – 10:00	Orientation for First Timers	Choir Room C-100
9:00 – 10:00	Set Up Show and Sale/Souvenir Items	Gymnasium
10:00 – 10:50	Adult Educational Seminars	H 200 Rooms
10:00 – 11:30	KidsView Educational Seminars	Art Room
11:00 – 11:50	Adult Educational Seminars	H 200 Rooms
11:50 – 12:30	Lunch – On Your Own	Courtyard Café
12:30 – 1:20	Adult Educational Seminars	H 200 Rooms
1:30 – 3:00	KidsView Bus Tour	Meet at Art Room
1:30 – 2:20	Adult Educational Seminars	H 200 Rooms
1:30 – 3:00	Commemorative Distribution	H 100 Pod
2:30 – 3:20	Adult Educational Seminars	H 200 Rooms
2:30 – 3:20	Set Up Show and Sale/Souvenir Items	Gymnasium
3:00 – 3:30	Charter Member Reception	Courtyard Café
3:30 – 5:30	Annual Business Meeting	Auditorium
6:00 – 8:30	Potter's Picnic (Serving food until 7:00 p.m.) Sponsored by Chamber of Commerce	Colvill Park
Saturday, July 14		
8:00 – 9:00	Set up Show and Sale (Courtyard Café Opens at 7:00)	Gymnasium
8:00 – 10:30	Membership/Registration: includes Anniv. Tile pickup & raffle sales	Courtyard Café
8:00 – 10:30	Commemorative Distribution	H 100 Pod
8:00 – 11:00	KidsView Stoneware Pick Up	Courtyard Café
8:00 – 11:00	Auction Prices-Realized Catalogs for Sale	Courtyard Café/Gym
8:00 – 1:30	Display Open to the Public	J 100 Pod
9:00 – 10:30	Show and Sale Open to Registered Members ONLY	Gymnasium
10:30 – 1:30	Show and Sale Open to the Public	Gymnasium
9:30 – 1:00	Commemorative Lottery (while supplies last)	H 100 Pod
1:30 – 3:00	Show and Sale Removal	Gymnasium
1:30 – 3:00	Display Removal	J 100 Pod
5:30 – 6:30	Banquet Social Hour	Red Wing Golf Club
6:30	Banquet Dinner	Red Wing Golf Club

Schedule current as of June 1, 2007 - subject to change.



**JEFF
FLOYD**

Auction Manager

The 30th Anniversary of RWCS is upon us and Convention is almost here. Thanks to all the members who submitted an item into the Convention Auction Lottery. Letters went out around June 1 to all members that were drawn in the lottery. Please contact the Auction Manager directly if you are unsure of the status of your submission.

Check-in times for the Auction are Wednesday from noon to 3 p.m. and Thursday from 8 to 11 a.m. Please use the Wednesday check-in if at all possible. Viewing for the Auction will be from 12:15 to 4:15 p.m. Thursday. The Auction will start at 4:30 p.m. Any member who would like a catalog with prices realized from the Auction can send a check to the Auction Manager after Convention. They are priced at \$3. Please make your check out to "RWCS."

Hope you see you in July!



**TERRY
SPEEDY**

*Interim Education
Manager*

July is fast approaching, and opportunities to learn more about your passion at the Convention celebrating the 30th Anniversary of the Red Wing Collectors Society are abundant. This year's Keynote will be given by Dustin Winterowd, the Red Wing Boy Scout who had the unique opportunity to clean the historic tunnel kiln for his Eagle Scout project. Dustin will present numerous photos via PowerPoint presentation and will give a run-down on what he had to overcome in order to make this happen. There were several obstacles, and he did a lot of organizing to pull the project off. He will answer members' questions regarding the kiln clean-up, and we'll also have a person present to answer any questions about the history of the kiln itself.

Many members have stepped up to present educational sessions, so Convention promises to be filled with great seminars. We'll have presentations on displaying and protecting your collection; wonderful new discoveries from the Red Wing dump; and tips on maximizing your eBay experiences. See first-hand what the stoneware company and salesmen Ledgers contain, and how they are being preserved in your Museum. Dinnerware aficionados will be wowed by Village Green, and we'll also have something special for those Art Pottery collectors. Sharing and learning from each other has always been our mainstay. Come join us this year, and help continue that tradition!

CONVENTION NEWS & NOTES

The annual Outdoor Antique Flea Market will be held once again in the streets of historic downtown Red Wing starting at sunrise on Sunday, July 8, and running until around 4 p.m. A \$50 donation to the Red Wing Collectors Society Foundation will give you a 20-foot by 20-foot space to peddle your wares.

Please note that the items for sale must be antiques or souvenirs. Checks made out to the RWCS Foundation can be sent to Red Wing Collectors Society Foundation Fundraiser, c/o Diane Hallstrom, 317 Bush St., Red Wing, MN 55066. Contact Diane with questions at DIAHALL@REDWING.NET or 800-554-9639.

The winner of the July Convention pre-registration lottery was Gilbert Orr of Mansfield, Ohio. The early bird random drawing took place on April 20. He will receive one of the 2007 Special Commemoratives.

Ingrid Koester is the winner of the annual KidsView Plate Design Contest. Ingrid will hand-paint her design on a real Red Wing plate. The plate will be sold to the highest bidder at the Thursday evening auction, so look for it in the Auction Catalog. Remember, proceeds from the plate are used to offset the costs of materials used by the children in the KidsView seminars, so not only do you have a one-of-a-kind design, but you're also helping out our future generation of Red Wing collectors.

Red Wing Collectors Society Chapter Quilt Raffle

Calling all Red Wing Collectors Society members! At the 2006 Convention, the Trails West Chapter asked all RWCS chapters to submit a square for a quilt to be assembled and raffled at the 2007 Convention. Proceeds from the raffle of this beautiful queen-size quilt (81"x105") will benefit the Red Wing Collectors Society Foundation.

- Tickets are \$5 each.
- For sale in Red Wing during Convention week only!
- Several members will sell raffle tickets around town and at the high school.
- Winner will be drawn during the Annual Business Meeting at Red Wing High School on Friday, July 13.
- Need not be present to win.
- Not attending Convention but would like to purchase a ticket? Send your money with a fellow member and they can secure your ticket.
- Only 3,000 tickets will be available for this raffle item.





KIDSVIEW PREVIEW

This summer, KidsView participants will work to uncover the magical history of the Red Wing Potteries through a series of events. We will continue to make our own stoneware with Mike Robinson and hold the auction with Dick Houghton. We're sure many of you kids have been to auctions over the past year and have stories to tell about pieces that you bought or the ones that got away. We look forward to everyone's stories!

We will also continue to try to uncover just how the potters and the many women who "hand-painted" the dinnerware did it by painting on real Red Wing plates. New this year, we will try using a potter's wheel to make a small pot.

Then we will put on our super sleuth overcoat and super spy hat and glasses, jump on the magic school bus and head out for the very first KidsView Field Trip! Who knows what lies ahead along this magical journey?

Parents, you will need to sign your child up for Friday's trip on Thursday to make sure there is enough room on the bus. The sign up sheet will be located by the registration area. As always, KidsView 2007 is guaranteed to be a fun adventure uncovering all of the history and adventure that Red Wing has to offer!

2007 DISPLAY ROOM UPDATE

Good news for displayers: we still have space available! Like last year, the Display Room will be on the first floor in the J100 rooms of Red Wing High School. We do have a few people who signed contracts to display, but there's plenty of room for more. We know that every member could put on a stellar display with their collection, so now is your chance to show off some of your passion!

This year, in honor of the 30th Anniversary, all displays will be the same size. This will also allow more members to participate, so be sure to sign up for your spot right away.

Each regular Stoneware, Dinnerware, Art Pottery, Memorabilia and any Non-competitive displays will receive one regular Commemorative as a "thank you" for taking the time to display your treasures for the rest of the Society. Regular displays are judged for Best-of-Show and People's Choice Awards, and the winners receive a Special Commemorative. There is also one Special Commemorative awarded to the winner of the Dennis Yaeggi Rare Item Award, determined by a vote of the membership. These awards will be announced at the Annual Business Meeting. Chapters are also encouraged to display in the non-competitive category. While chapters will receive a regular Commemorative, there is no Special Commemorative awarded in this category. It is, however, a great way to promote your chapter and display the pieces of all chapter members together.

We encourage all RWCS members attending Convention to stop by and vote for the People's Choice Award. Check out the Convention schedule for times that the Display Room will be open, and then come down and view the beautiful displays your fellow members have put up this year. If you have any questions, or are interested in displaying or volunteering in the Display Room, please contact: Glenn & Julie Ellen Beall, Display Room Chairs, 215 W. 7th Street, Logan, IA 51546-1221; GBEALL@LOGANET.NET or 712-644-2256. See you at Convention!

JULY 2007 KIDSVIEW SCHEDULE

THURSDAY, JULY 12	GROUP 1	GROUP 2
1:00-1:45	MAKE YOUR OWN STONWARE	AUCTION VIEWING
1:50-2:35	AUCTION VIEWING	MAKE YOUR OWN STONWARE
2:40-3:30	SILENT AUCTION	KIDSVIEW AUCTION
FRIDAY, JULY 13		
10:00-11:30	DISCOVERY: HOW DID THEY DO IT? GIVE IT A SPIN: EPHRAIM POTTERY	GIVE IT A SPIN: EPHRAIM POTTERY DISCOVERY: HOW DID THEY DO IT?
11:30-3:00	SUPER SLEUTH BUS TRIP TO RWCS MUSEUM AND OTHER SITES (TIME PERMITTING) MUST BE PRE-REGISTERED.	

*ALL KIDS TO MEET IN ART ROOM

*CHILDREN WILL BE DIVIDED INTO GROUPS BASED ON AGE

*STARTING TIMES MAY VARY



CROCKY MOUNTAIN

A VISIT WITH DENVER'S JACK MAY AND STEVE DAVIS



Story by Rick Natynski

With most of the great stoneware, dinnerware and art pottery found in the Midwest, it's hard to believe two of the top Red Wing collections in existence sit only a half hour apart from one another in view of the Rocky Mountains, more than 900 miles away from Red Wing.

Being so far from the epicenter hasn't hindered Jack May and Steve Davis from building incredible collections. Despite the distance from Red Wing to the two Denver suburbs where they live, it's common to find at least a few pieces of Red Wing when strolling through the many antique malls, shops and shows the area has to offer. In addition, they are a fixture at Convention, often attend the MidWinter GetTogether and also acquire a lot of pieces from auctions, eBay and fellow collectors.

Jack began collecting back in 1991 after receiving a few crocks from his brother-in-law, Moose Shoemaker, a farmer in Western Nebraska who occasionally bought stoneware at farm auctions. Once he found the *Red Wing Stoneware* book and learned that Red Wing made entire lines of stoneware, he invited Jack to go on a crock-hunting excursion around Denver antique shops. Moose was looking for a 4 gallon shoulder jug when they met antique dealers Pat and Paul Hauke, who said they had three of the jugs at home. So Moose, Jack and wife, Sonja, made a visit.

"After we looked around for awhile, Sonja asked why a big pile of stoneware was pulled off to the side," Jack explains. "When I told her that was the stuff I was buying, she said, 'But we don't collect Red Wing.' I said, 'Well, we do now.'"

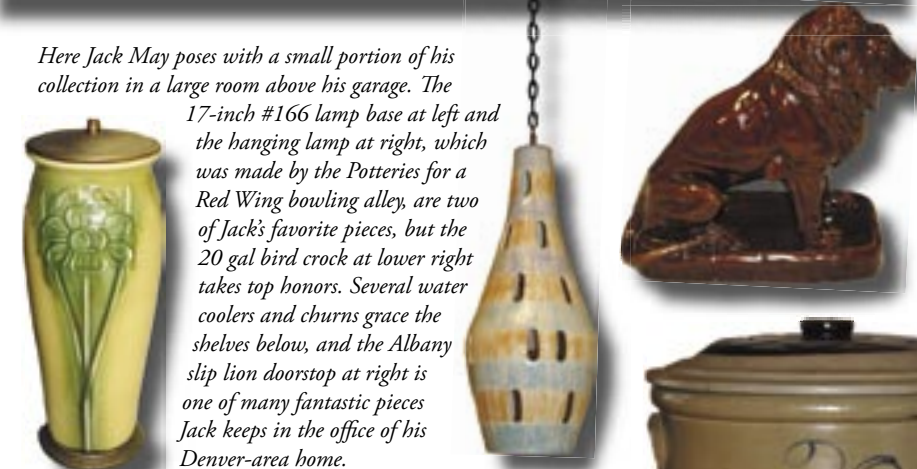
Soon Jack's passion for Red Wing grew and stemmed past stoneware into dinnerware and art pottery, and he began collecting anything and everything the potteries turned out.

Steve and Jack have been partners in their Denver-area optometry practice for many years, and like many people feel before succumbing to the Red Wing bug themselves, Steve thought Jack was a little out-of-sorts for collecting old crocks and jugs. But by 1996, he could no longer resist and bought sets of birchleaf crocks and oval-over-wing churns from Jack to build a collection of his own.

"I look to Jack as my mentor in Red Wing," Steve says. "He really taught me what to look for."

Whether it's salt glaze or zinc glaze, beehive jugs or advertising pieces from his home state of Nebraska, Red Wing has found a special place in Steve's heart. And with dinner served on the Brit-tany pattern from Red Wing's Provincial Line, he's also developed a palate for it.

Here Jack May poses with a small portion of his collection in a large room above his garage. The 17-inch #166 lamp base at left and the hanging lamp at right, which was made by the Potteries for a Red Wing bowling alley, are two of Jack's favorite pieces, but the 20 gal bird crock at lower right takes top honors. Several water coolers and churns grace the shelves below, and the Albany slip lion doorstep at right is one of many fantastic pieces Jack keeps in the office of his Denver-area home.



IN HIGH



Hundreds of pieces each

The only thing more impressive than the quality of the May and Davis collections is the sheer size of them.

In addition to all the good stuff scattered around his house, Jack has a large room above his garage that is dedicated to Red Wing, which is reinforced by a steel beam to support the weight of all the stoneware.

Although Sonja would rather see Jack trim down the size of his collection (which isn't going to happen anytime soon, he promises), she doesn't mind him displaying it throughout their home, minus a few rooms which are kept Red Wing free for her sanity. No matter where they sit, every crock and churn has a lid, and every jug is plugged with a wooden stopper. One display idea he adopted from collector Dave Short is to display stoneware on shelves painted black, which "really makes the stoneware pop," Jack says.

Steve's wife, Margaret, loves Red Wing just as much as he does, which means pieces of Red Wing are displayed in virtually every room of their home. With so many items to display, the couple has gotten creative in ways to showcase their collection. Some of their best ideas include using small drawers that are slightly pulled out of their cabinets to display advertising bowls and Koverwates on their sides. They also rest advertising bowls atop small blue bean bags so they can display them on their sides without having to worry about them rolling around.

Luckily the Davis' have never lacked space to display their large collection, because Steve built a two-story barn at the back of their property in 1994. And fortunately just like Jack, he incorporated a steel beam into the plans, which came in handy when supporting the heavy collection.

The coveted favorites

Both men have several pieces that rank among their favorites, but when asked to choose only one, their answers were for the birds. Jack has four salt glaze crocks with cobalt birds, one of which boasts the biggest bird you've ever seen and is front-stamped Red Wing.

Steve has a bird jug and two bird crocks, one front-stamped with the Minnesota split oval and the other front-stamped Red Wing. That bird crock tops his 5 gallon three-leaf salt glaze beehive jug as his favorite (at right), because his wife surprised him with it for Christmas two years ago. She acquired the piece from Roger and Rachel Hildebrand a few months before the holiday, hiding it in their bedroom in plain sight, with the decoration turned to the wall. The couple already had a few large salt glaze crocks in their bedroom, so it blended in pretty well.

"I slept next to it every night and I never knew it was there," Steve laughs, shaking his head. ■

Special thanks to Jack & Sonja May and Steve & Margaret Davis for their great hospitality and kind invitation to see their collections while I was in town with my wife, Elsa, back in March.



Steve Davis poses below a street sign bearing his name in the barn behind his Denver-area home, which has four rooms dedicated to a variety of his interests, the largest of which is Nebraska advertising premiums and stoneware, such as the Hooper, Neb. crocks and churn below. Steve's favorite piece is the 20 gal salt glaze bird crock which sits with some of his other quality salt glaze above, and the 10 gal Imperial beehive jug pictured at the top is truly a piece to behold.



If 80-year-old farmer Art Perry was still in the business of dealing stoneware, he could forget about the damage his wheat crop sustained earlier this spring and say “I’m going to have a good crock crop this year, so it doesn’t matter.”

There are many pioneers out there who helped generate interest in collecting stoneware in the early years of the Red Wing Collectors Society, and although Art has never actually been to Red Wing, he is considered by many to be one of those pioneers.

“Buying and selling Red Wing is one of the highlights of my life,” Art says. “I met a lot of great people from different places and all walks of life. And not only has it been interesting, but it’s been profitable, too.”

Art began collecting antiques in the 1960s, but it wasn’t until 1985 that he turned his focus to buying and selling Red Wing. It was Art’s brother and fellow Red Wing collector, Dennis Perry, who suggested that he’d probably make more money off crocks than he would by simply putting his money in the bank and letting it accrue interest.

Once acquiring the Red Wing bug, Art’s “bibles” became the *Red Wing Stoneware* and *Red Wing Collectibles* books, *Clay Giants*, *Red Wing Potters and Their Wares* and *RWCS Newsletters*. Soon he was able to distinguish the difference between rare and common pieces and he was off to make a name for himself.

Known as the “Crockman” by antique shop owners, auction-goers and Red Wing collectors throughout the nation’s southern Corn Belt, Art would start a typical hunting day around 6 a.m., pulling away from his home located 3½ miles east of Tescott, Kansas, which is about 25 miles from Salina. He would drive without stopping until 9 or 10 a.m., when most antique shops opened. Then he slowly made his way home, stopping and shopping at every antique mall and yard sale he encountered. By the time he got home, he usually had a load of crocks sitting in the bed of his pickup truck.

“The best hunting was in Central and Eastern Nebraska,” Art says. “I also found some good pieces in South Dakota, but I never did find much in Southern Kansas.”

Art figures he bought about 1500 pieces of stoneware over the years, with his largest inventory at any one time ranging between 700 and 800 pieces.



About Art the Man

Art’s history-rich background makes him sound like a character right out of a novel. He was born in 1926 and grew up on his family’s homestead outside Tescott – the same home in which he still lives today. He attended grade school in a one-room schoolhouse, walking 2 miles there and back everyday along with his two brothers and one sister. His father farmed and his mother was a schoolteacher before becoming a fulltime homemaker.

“Buying and selling Red Wing is one of the highlights of my life.”

Art graduated high school in 1944 and enlisted in the Navy shortly thereafter, serving aboard a ship that sailed the South Pacific during World War II. After leaving the military in 1946, he attended the University of Kansas and graduated with a business degree in 1950. Then he worked at a bank for two years, but found that

sitting behind a desk wasn’t for him. He moved back to the farm and taught in a one-room schoolhouse for four years before going into the dairy business fulltime with his father. Art says he never married, because he “never could afford that luxury.”

When his mom died in 1994, Art inherited the 160-acre farm that his grandfather bought from the Union Pacific Railroad in the late 1800s. Including rented acres, the most he ever farmed was about 450 acres. Although he’s now 80 years old, he’s still farming nearly 400 acres this year.

“We had an extension ladder put on the combine two years ago so my brother and I could still climb up into it,” he says with a laugh.

“I’m going to keep farming until they haul me off to the cemetery,” he adds. “A few years ago, I thought it would be a good idea to get some of my funeral arrangements taken care of in advance so my relatives wouldn’t have to worry about them. I decided I didn’t want to spend \$6,000 on a casket, so I built a pine box for \$68. It’s sitting out in the dairy barn waiting for me.”

“When I talked to the funeral director about it, he was worried the bottom would fall out of it,” Art says, chuckling again. “I told him, ‘That won’t bother me one bit.’”

About Art the Dealer

Of the 1500 pieces of stoneware Art bought over the years, a lot of them were common crocks and jugs. But considering he bought

The Crockman Who Never Visited Red Wing

Story by Rick Natynski

most of his inventory when prices were low and demand was just beginning to increase, he also found and rescued many rare and unique pieces from old farm auctions and dusty antique shops that are now cherished pieces in private collections. Albeit hard for new collectors to fathom, Art was out buying when good stoneware was a bargain and still easy to find. Some of his greatest discoveries include:

- Two side-stamped 30 gallon salt glaze butterfly crocks
- Rare birchleaf crock with "Fresh Oysters" and Union oval
- 1/2 gal Mason fruit jar with ink stamp applied vertically instead of horizontally
- 6 gal front-stamped salt glaze water cooler with drop-8 decoration
- 15 gal crock with advertising from Breman, Kansas
- 2 gal birchleaf churn with "Mennig & Slater" advertising

Although he displayed a few pieces of Red Wing in his home over the years, Art scattered the majority of his finds throughout three farm buildings. Most zinc glaze crocks, jugs and churns were stored in the dairy barn, but salt glaze was stacked four to six pieces high in the old granary, and large crocks were stored in the hen house that had a daily output of 30 dozen eggs when it was still active.

"For awhile I set up at flea markets, but I always ended up buying more stuff than I sold," he explains. "Mainly I just relied on word-of-mouth and sold pieces out of the barns to anyone who would come out to buy them."

Art says he never once bid against any of his customers at auction, although he would jump in the bidding once they quit if he thought he could still make a few bucks on a piece.

One of Art's best-known customers was Larry Peterson, who made two treks from Minnesota to Kansas in 1990. Jack May was one of Art's biggest customers, buying nearly 200 pieces in the mid-1990s alone. Jack usually made the trip from Denver to Tescott to pick up the crocks, but being an optometrist, he once persuaded Art to deliver a load to Colorado by setting him up with a pair of new glasses.

The Good Old Days

In 1985, \$3 or \$4 would buy a 2 gallon crock and crocks ranging in size from 20 to 30 gallons usually sold for less than \$20, Art says. When there was a group of crocks at an auction, the auctioneer would often offer buyer's choice for the first three or four pieces, and then sell everything else together in one load.

"I once bought about 25 or 30 quart and half gallon Red Wing Mason fruit jars for \$1.50 or \$2 each," Art recalls. "I remember I would sell them for \$5 a piece and I thought I was setting the world on fire. Now I haven't seen one of those quart or half gallon jars sell for less than \$225."

The prices got too high once 2 gallon crocks started bringing \$45 to \$55 a piece, and Art stopped buying. Once all of his good pieces had been picked through, he sold most of the remaining inventory in two big auctions in 1999. He stopped hunting for Red Wing altogether in 2002, but still holds on to a few nice pieces for sentimental purposes, including a front-stamped 3 gallon salt glaze crock, a North Star jug he plans to give to his niece someday, and a ladies-size Red Wing salt glaze spittoon he bought at auction for a few dollars back in the 1970s without even knowing it.

"The spittoon was sitting on an antique table I bought," Art recalls. "I didn't think much of it earlier in the auction, but later I asked the auctioneer if he was going to sell the spittoon, and he said, 'I already did. You bought it.'"

It's been five years since he "retired" from being a stoneware dealer, yet Art Perry still often reminisces about the good old days, when he was known as the Crockman.

"I made many good buys, but I also made a lot of mistakes along the way," Art confesses. "I guess my biggest was that I didn't start buying Red Wing earlier, because I'd have even more great memories. All in all, I wouldn't trade those memories for anything." ■



CHAPTER EVENTS

Chapter Meetings during Convention

All RWCS Chapter Meetings are scheduled for 1 to 2 p.m., Thursday, July 12 at Red Wing High School. Room assignments will be posted at Convention.

Lewis & Clark Chapter

Members and anyone interested in joining the L & C Chapter are invited to attend dinner during Convention at Liberty's Restaurant and Lounge in Red Wing, at 5:30 p.m. Friday, July 13. Contact Shiela Schumacher at RJSJ@MCHSI.COM or 952-242-4203 for more information or to RSVP.

Sunshine State Redwingers

Members met on March 10 at the home of charter member Mavis Hazen. The chapter discussed its commemorative, had a very informative show and tell session and enjoyed a wonderful pot luck lunch complimented by the homemade lasagna that Mavis served. For information regarding Florida Chapter membership, contact Darlene Duecker at SSRW@BELLSOUTH.NET or 954-560-9622.

Trails West Chapter

The spring meeting was held at the home of Doug and Joan Arth in Kearney, MO. After lunch, the group had its regular business meeting to discuss this year's Chapter commemorative and the status of the quilt to be raffled off at Convention. Wayne and Nancy Lambert provided the group with a wonderful program, slides and shards from their recent trip to the RW dump with Steve Showers. The October meeting will be held at Earl & Beth Humphrey's in Excelsior Springs, MO. and will include a tour of the Excelsior Springs Museum and Hall of Waters.

SUMMARY OF SUBSTANTIVE REVISIONS TO THE BYLAWS OF THE RED WING COLLECTORS SOCIETY, INC.

According to Article XV – Amendments, of the RWCS Bylaws, amendments proposed to the Bylaws by the Board of Directors are required to be published in the newsletter at least once, and ratified by a two-thirds (2/3) majority vote of the members in good standing present at the annual business meeting or a special meeting.

The Board of Directors hereby proposes the following revisions of the Bylaws (in *Italics*):

General References:

o Business Manager/Convention Manager: All references to the "Business Manager/Convention Manager" shall be changed to "*Executive Director*". The responsibilities of the position will not change, but the Board feels the new title more accurately reflects the responsibilities of the position.

o Executive Board: All references to "Executive Board" shall be changed to "*Executive Committee*". This change clarifies that the Executive Committee is actually a Committee of the Board of Directors, and not a separate Board. No change in Committee function will occur.

ARTICLE IV – Executive Committee, Boards of Directors, and Officers

o The organization shall be governed by the Board of Directors which shall be composed of President, Vice President, Secretary, Treasurer, Historian, Auction Manager, Commemorative Manager, Education Manager, and two Representatives at Large. *The Past President and the Executive Director shall be ex-officio non-voting members of the Board of Directors.*

Clarification of wording stating the Past President and Executive Director are ex-officio non-voting members of the Board of Directors. This is not a change from past procedure; it just had not been specifically detailed in the Bylaws.

o Primary duties are as follows:

o **President** – to preside at the annual business meeting, and to call and preside at meetings of the Board of Directors. *The President shall only vote to break a tie vote of the Board of Directors or Executive Committee, or if needed to constitute a quorum at said meetings.*

This is not a change from past procedure, but is in accordance with Roberts Rules of Order, and had not been specifically detailed in the Bylaws.

o **Immediate Past President** – may serve as an ex-officio non-voting member of the Board, *at the discretion of the current President*, for up to two years after his/her term expires.

This change was requested so that the current President could request the Immediate Past President to attend Board meetings to assist with continuity issues if this assistance is needed.

o **Non-Elected Convention Support Positions**

– Eliminate the positions of Marketing and Social Events/Volunteer Coordinator. These positions have not been utilized for a number of years, with those duties having been assumed by the Executive Director.

o Eliminate the following: "*An organizational chart reflecting the managerial concept for the RWCS is attached hereto.*" This chart no longer accurately reflected the managerial structure, and the structure is adequately defined elsewhere in the Bylaws.

ARTICLE XV – Amendments

o Delete the following: *A quorum at a special meeting shall be at least twenty-five percent of all members in good standing as of the date of the meeting. Any decision at a special meeting shall require a 2/3 majority vote of those present.*

This information is included as part of **ARTICLE XVI – Special Meetings**. The reference under **ARTICLE XV – Amendments** is repetitious.

ARTICLE XVI – Special Meetings

o A quorum at a special meeting shall be at least *ten* (Delete "twenty-five") percent (*10%*) of all members in good standing as of the date of the meeting

Percentage of members in good standing as of the date of the meeting was reduced from twenty-five percent to ten percent. The Board of Directors feels twenty-five percent is an unrealistic requirement for the membership and that 10% was attainable.

ARTICLE XVIII – Removal of Board of Directors Members

o Any member of the Board of Directors may be removed (Delete "*for just cause*") by a two-thirds majority vote of the members in good standing *attending the annual meeting*, or a two-thirds (2/3) majority vote of all voting members of the Board of Directors. (Delete: "*Either action may be appealed to the general membership.*") *The removed Board member may request reinstatement at the next annual business meeting, requiring a two-thirds (2/3) majority vote of those members in good standing in attendance at the annual business meeting.*

The phrase, "*for just cause*", was deleted as there is no definition in the Bylaws as to exactly what constitutes "just cause". Adding the phrase, "*attending the annual meeting*" to the first sentence clarifies the parameters of this action. As it previously read, a two-thirds majority of ALL members in good standing would have been required, and this created a virtually impossible requirement for the members to achieve. The "appeal" or "reinstatement" process is clarified by the addition of the last sentence. This change makes the process for requesting reinstatement of a removed Board member the same as that for a removed general member, as currently outlined under **ARTICLE VI – Conduct**.

The proposed amendments to the RWCS Bylaws will be discussed and voted upon at the RWCS Annual Business Meeting, which will be held during the 2007 Convention, at 3:30 p.m. on Friday, July 13th, in the auditorium of Red Wing High School, Red Wing, MN. If you have any questions or concerns prior to the annual business meeting, please contact any RWCS Board member at the contact information listed on page 2 of the *RWCS Newsletter*.

RED WING STONWARE & ART POTTERY

AUCTION

Tuesday, July 10, 2007 – 3:30 PM
National Guard Armory Red Wing, MN

Salt Glaze Crocks, Churns, Jugs, Elephant Ear Crocks, Churns, Birchleaf Crocks, Churns, Jugs, Wing Water Coolers, Poultry Feeders, Stoneware Pitchers, Spongeware, Red Wing Mason Fruit



Jars, Mini Jugs, Adv. Jugs & Beater Jars, Artware, Bob White Dinnerware, Plus much more. Catalogs available at \$5.00 each.

HOUGHTON'S AUCTION SERVICE
1967 LAUNA AVE. RED WING, MN 55066
651-388-5870 WWW.HOUGHTONAUCTIONS.COM

RED WING STONWARE & ART POTTERY

AUCTION

Wednesday, July 11, 2006 – 3:30 PM
National Guard Armory Red Wing, MN

Salt Glaze Jugs & Crocks, 5 Gal. Salt Glaze Double P Target Churn, 5 Gal. Leaf Churn, Birchleaf Crocks, 4 Gal. Ice Water Cooler, 20# Butter Crock, MN Twins Ash Trays, Hamm's Bear Bank, Commemoratives, pair of School Children, "Bohemian Rye" Czech Bottle, Assortment of Artware, Assortment of McDonald's Crocks & Mugs, Framed Larry Veeder Prints, Plus More.

Catalogs available at \$5.00 each.

HOUGHTON'S AUCTION SERVICE
1967 LAUNA AVE. RED WING, MN 55066
651-388-5870 WWW.HOUGHTONAUCTIONS.COM

POTTERY PLACE

Show & Sale

July 11-14 (Indoor & Outdoor)

Annual Brat Feed

July 11 - 11 a.m. to 2 p.m.



Space available for dealers with *quality* antiques.

For more information, contact:

Outdoor space:
Dennis Chasteen 605-380-7222

Indoor space:
Bernie Bussman 651-388-7765

Classified ads are 15¢ per word; \$3 minimum charge.

Ads are divided into the following sections: Red Wing For Sale, Red Wing Wanted, Other Pottery For Sale, Other Pottery Wanted, Events, Clubs, Auctions, Publications & Web Sites, Announcements and Services. You will not be charged for these words, but please indicate which section your ad should be placed in. If ad is to run in more than one issue please indicate at time of placement. (Note: the small number at the end of an ad tells when the ad expires, e.g., 12/07. Ads without dates are one-time ads.) Please type or print clearly and proofread before submission.

DISPLAY ADS

Display Ad Size	1x	6x
Full page	\$400	\$360
1/2 page (<i>horizontal or vertical</i>)	200	180
1/4 page	100	90
1/8 page	60	45

Display Ad Dimensions

Full Page	7 1/2 x 10
1/2 page (<i>horizontal or vertical</i>)	7 1/2 x 4 7/8
1/4 page	3 5/8 x 4 7/8
1/8 page	3 5/8 x 2 1/4

Display Ads are accepted on a first-come, first-served basis. The publisher reserves the right to refuse ads for any reason.

Ads must be supplied electronically as an EPS or PDF file for PC. Be sure to include all fonts used. If you are unsure about acceptability, inquire with the Editor. There is an additional 10 percent fee for design and makeup if needed. Camera-ready ads are not accepted. Unformatted or unreserved ads will be treated as classifieds.

DEADLINES

Issue	Ad Deadline	Editorial Deadline
February	Jan. 10	Jan. 1
April	March 10	March 1
June	May 10	May 1
August	July 25	July 15
October	Sept. 10	Sept. 1
December	Nov. 10	Nov. 1

EDITOR ADDRESS

Make checks payable to RWCS and mail with ads to: Rick Natynski
General Delivery: USPS
13425 Watertown Plank Road
Elm Grove, WI 53122-9998

RED WING FOR SALE

Advertising beater jars: Berlin, Wis., \$175; Redfield, S.D., \$175; Madelia, MN, \$175; Madelia, MN, hairline, \$150; Devils Lake, N.D., hairlines, \$75. Bean pots: Eldrige, N.D., \$140; Comstock, MN, no lid, \$80; Climax Shelly, MN, no lid, \$80. 2 gal brown top wing jug, \$475; 2 gal brown top wing ball lock jar, \$475; Moorhead, MN, Pederson Mercantile 1/2 gal beehive jug, \$250. Spongeband adv. pitchers: Reynolds, N.D., \$250; Park Rapids, MN, chip, \$225; Fairview, Neb., chip, \$225; St. Paul, MN, hairline, \$75. Call Sid at 701-749-2586.

Commemoratives mint in box: 1990, \$110; 1994, \$100; 1995, \$90; 1999, \$90; 2000, \$90; 2002, \$85; 2004, \$85; 2005, \$85; 2006, \$90. RWCS Newsletters 1987 to date, fine condition, \$50. Waconda 5 gal jug, Union Stoneware, mint. Call 320-382-6173. 8/07

Full set of Commemoratives 1977-2006, mint, \$8,500. 2 gal water cooler, Union, small wing w/lid, base has a tight hairline about 2 inches on bottom and 3 inches on side, small chip underside of lid, \$1,400. Call Dorothy at 952-446-9662.

Commemoratives: all years available except one. Respectable prices – call with the items you want. Also, 4 gal handturned birchleaf beehive. Reasonable postage or can bring sold items to Convention. Call Alan at 320-290-5870.

Stop in and visit us when traveling! Now open in Billings, Montana, we have a great selection of antiques including Red Wing for the novice or advanced collector. Broadwater Mercantile Antiques, 1844 Broadwater, Billings, Montana. Tom & Carol Swoboda. Open 10 a.m. to 5:30 p.m. Mon. through Sat. E-mail BRMERCANTILE1001@QWESTOFFICE.NET or call 406-652-4590 for wants or info. RWCS members since 1987. 12/07

We can't believe this is our 9th annual Red Wing "Artware-Dinnerware Sale" at our booths 62 in Superior, Wis. We are located in the Superior Antique Depot, 933 Oaks Ave. and Allouez Antiques, 4101 E. 2nd St. Sale runs Friday, June 22 through Sunday, July 15, everyday 10 a.m. to 5 p.m. in both locations. We may have just the piece you are looking for!

Commemoratives: 1996, 1997, 1999, 2000, 2002, 2003, 2004. Prices are \$55 each (\$385 total for all 7 items), or make offer. I also have 1 cookie jar for \$30, and 2 sponge bowls for \$60. Please call Dave at 262-227-1891 or e-mail ALLARD553@HOTMAIL.COM

Commemoratives: 1983, 1986, 1987, 1988, 1990, 1992, 1993, 1994, 1995, 1997, (two available); 1998, 1999, (two available); 2002, 2003, 2004. Call Jon or Grace at 507-645-4660 with best offer for individual item or all. Also have a collection of buttons and ribbons from all the official RWCS Conventions - make offer.

RED WING WANTED

RWCS Convention buttons from 2003, 2004 and 2005. Also, I've never been able to find a 25 gallon or a 40 gallon crock with a wing and block-styled numbers. If you've ever seen one or know of one for sale, please call Larry at 712-654-8122 after 8 p.m.

CLUBS AND PUBLICATIONS

2005 stoneware book (*Antique Trader Stoneware Price Guide*); includes Red Wing; Monmouth-Western; Blue/White; Eastern U.S. 288 pages; colored photos; \$20 postage paid. Gail Peck, 2121 Pearl, Fremont, NE 68025; 402-721-5721. 12/07

2006 values for both *Red Wing Stoneware* and *Red Wing Collectibles!* \$9.95 each or \$17.95 for both plus \$1.50/\$2 postage, respectively. Quantity discounts available. Gail Peck, 2121 Pearl, Fremont, NE 68025; 402-721-5721. 12/07

RECENT FINDS & DEALS

Did you find a rare piece or a great deal worth sharing? Briefly describe the item, where it was sold, date purchased, venue (store, auction, etc.) and price paid. Send in on a post card, or if you'd like to include a photo for publication, e-mail RWCSNEWSLETTER@WI.RR.COM or enclose in an envelope. Multiple submissions result in multiple entries in the Newsletter Special Commemorative Lottery at the 2007 Convention. Send to the editor at the address on page 2. All entries received between July 2006 and June of 2007 are eligible whether published or not. Please keep submittals with purchase dates within six months of the newsletter issue.

ITEM	LOCATION	DATE	VENUE	PRICE
Bottom-signed blue mottled bailed jug ½-inch hole filled w/cork	Lawrence, Kan.	2/07	Antique mall	\$110. ⁰⁰
7-inch bailed spongeware jar, repaired lid	Ottawa, Kan.	3/07	Auction	\$110. ⁰⁰
Green nude Rumrill frog/vase		5/07	eBay	\$306. ⁰⁰
38-piece Pompeii dinnerware set		5/07	eBay	\$300. ⁰⁰
Beanpot with "Mansfield Store" adv., mint, no lid	Albert Lea, Minn.	5/07	Garage sale	25 cents
Bottom-signed preserve jar w/"Family Store Liquor, Salt Lake City" adv., mint	Logan, Utah	5/07	Private sale	\$500. ⁰⁰



WITH A NAME LIKE PETERSON, YOU HAVE TO COLLECT!

Dear Editor:
Enclosed is a picture of our personal collection of "Peterson" advertising stoneware. We have been collecting Red Wing for 40 years. The "hunt" is still great fun.
Sincerely, Rich & Jan Peterson, Arkansaw, Wis.

CLUBS AND PUBLICATIONS (CONT'D)

Blue & White Pottery Club: Annual membership is \$15 for first member, \$5 each additional member and \$1 for members under 12 years old. A membership registration form is available on the club's Web site: WWW.BLUEANDWHITEPOTTERY.ORG. You can also write to B&W Pottery Club, PO Box 460517, Aurora, CO 80015.

GAIL PECK & DAN DEPASQUALE'S



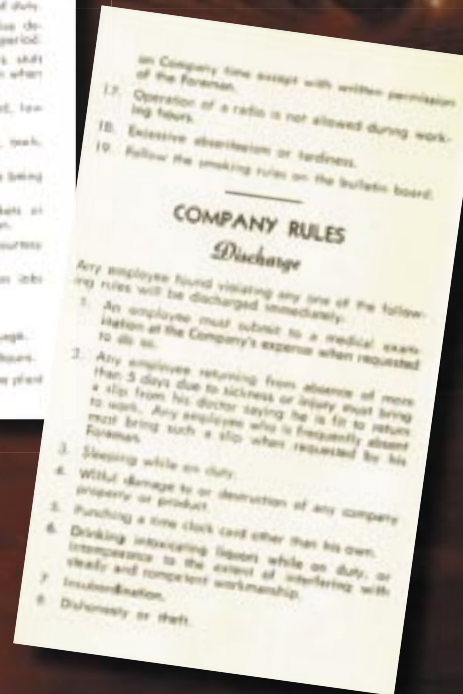
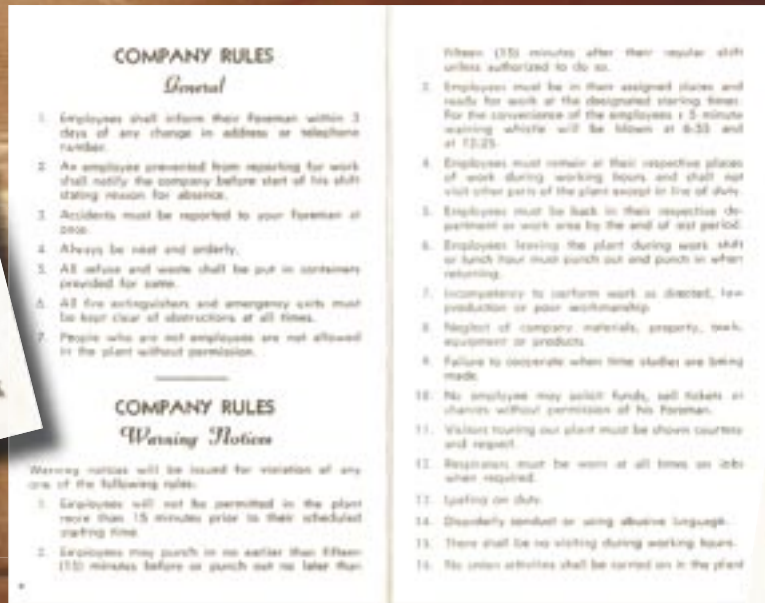
STONEWARE SALE

Consisting of Red Wing, Blue/White and miscellaneous stoneware in addition to Red Wing memorabilia

SUPER 8 MOTEL - RED WING, MN
CONFERENCE ROOM, POOL ENTRANCE

Wednesday, July 11, 8 a.m. to 3 p.m.
Thursday, July 12, 8 a.m. to noon

1964 EMPLOYEE RULEBOOK



How times have changed! In an era of lengthy employee handbooks that contain policies and rules on nearly every aspect of employment, and reams of paperwork that have to be completed to document poor work performance, it's refreshing to see how straightforward things were at the Red Wing Potteries back in 1964. Of particular interest are the rules against "loafing" while on duty and no visiting during working hours. Apparently the preverbal water cooler didn't exist at the factory unless one was actually being made.

Brochure photos courtesy of Steve Brown, RWCS Historian

COMING IN THE AUGUST ISSUE...



CONVENTION REVIEW

F. A. MORLEY JUG UPDATE

