



1977

2007

VOL. 32 NO. 4

30 Years of Collecting

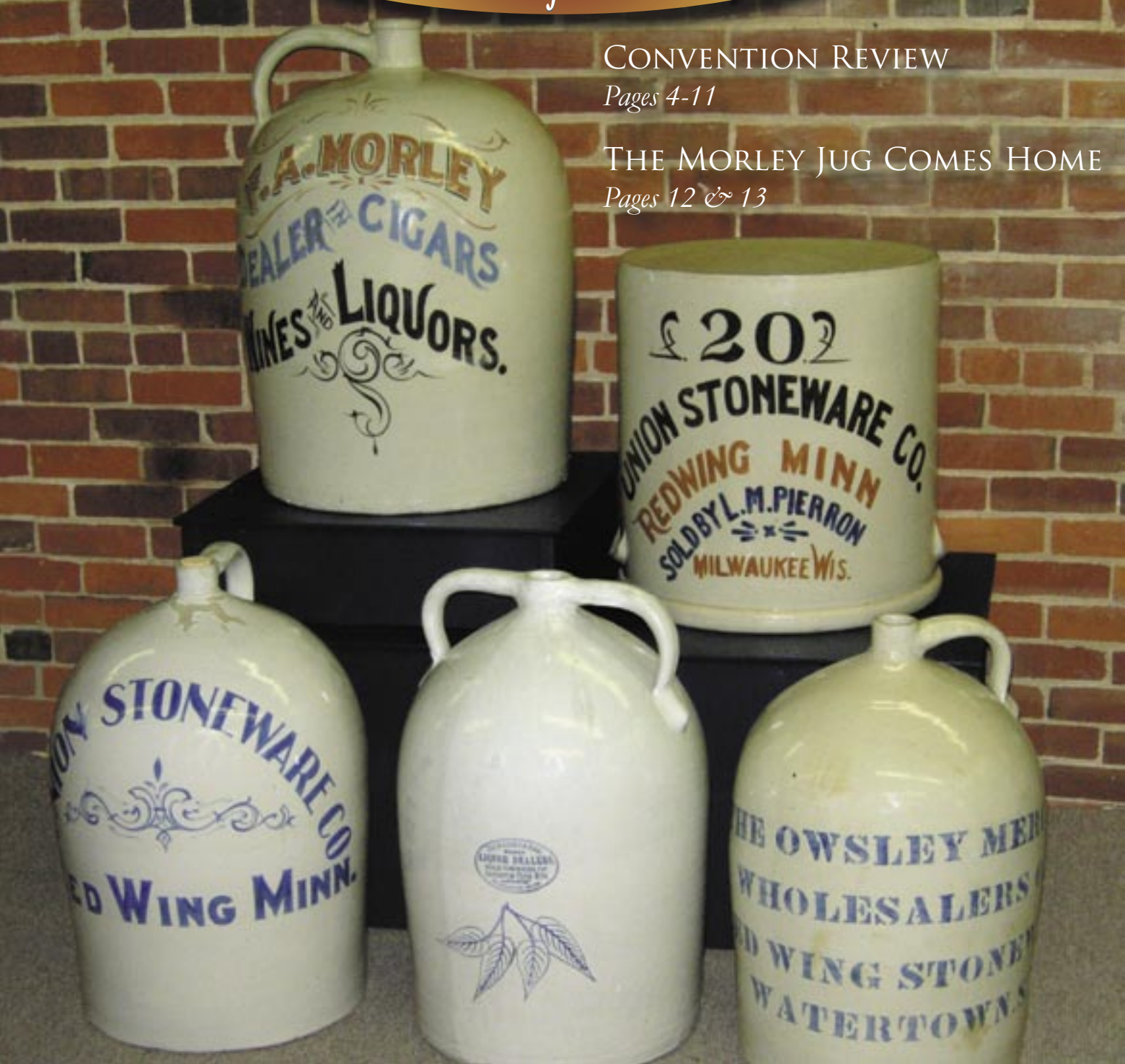
AUGUST 2007

CONVENTION REVIEW

Pages 4-11

THE MORLEY JUG COMES HOME

Pages 12 & 13



RWCS CONTACTS

RWCS BUSINESS OFFICE

PO Box 50 • 2000 Old West Main St. • Suite 300
Pottery Place Mall • Red Wing, MN 55066-0050
651-388-4004 or 800-977-7927 • Fax: 651-388-4042

EXECUTIVE DIRECTOR: STACY WEGNER

RWCS1@REDWING.NET

ADMINISTRATIVE ASSISTANT: OPEN POSITION

RWCSMEM@REDWING.NET

Web site: WWW.REDWINGCOLLECTORS.ORG

BOARD OF DIRECTORS

PRESIDENT: SUE JONES TAGLIAPIETRA
2219 Lakeland Ave. • Madison, WI 53704-5636
608-241-3072 • RWCSJIT@YAHOO.COM

VICE PRESIDENT: JOLENE McKOON
3124 4th St., Unit 8 • Moline, IL 61265
309-797-3894 • JMCKOON@ATT.NET

SECRETARY: PAULETTE FLOYD
208 E. Somonauk • Yorkville, IL 60560
630-553-9234 • PJFLOYD@SBCGLOBAL.NET

TREASURER: MARK COLLINS
7312 Lake St. • Omaha, NE 68134
605-351-1700 • MARKCOLLINS@COX.NET

HISTORIAN: STEVE BROWN
1816 Sakenda Rd. • Buffalo, MN 55313
763-684-2400 (after 5 p.m.) • BIGPAWS@CHARTER.NET

REPRESENTATIVE AT LARGE: RUSSA ROBINSON
1970 Bowman Rd. • Stockton, CA 95206
209-463-5179 • RRUSSA@AOL.COM

REPRESENTATIVE AT LARGE: JERRY ERDMANN
W15416 Fair-Morr Rd. • Tigerton, WI 54486
715-535-2094 • JJERD@FRONTIERNET.NET

AUCTION MANAGER: JEFF FLOYD
208 E. Somonauk • Yorkville, IL 60560
630-553-9234 • PJFLOYD@SBCGLOBAL.NET

CO-COMMEMORATIVE MANAGERS: JOHN TREMBLE
942 Becky Circle • Hudson, WI 54016-7509
715-381-0006 • RWCSMEMORATIVE@HOTMAIL.COM

MATT HUEPFEL
RWCSMEMORATIVE@HOTMAIL.COM

INTERIM EDUCATION MANAGER: TERRY SPEEDY
5079 S. Seymour Rd. • Swartz Creek, MI 48473
810-938-3228 • THESPEEDYS@TCWIRELESS.US

JULY CONVENTION SUPPORT PERSONNEL:
Pre-registration – JIM & JOYCE SUTHERLAND
AND JIM & KAREN KEYS

Show & Sale – CINDY & PETE MAY
423-639-2477 • RW3PCMAY@EARTHLINK.NET

Display Room – JULIE & GLENN BEALL
712-644-2256 • GBEALL@LOGANET.NET

IN THIS ISSUE.....



PAGE 3	NEWS BRIEFS, ABOUT THE COVER
PAGE 4	CONVENTION NEWS & NOTES, DIRECTOR'S JUG RECORD
PAGE 5	RWCS 30TH ANNIVERSARY COMMITTEE REPORT
PAGE 6	2007 KIDSVIEW PHOTOS
PAGE 8	2007 CONVENTION PHOTOS
PAGE 10	2007 CONVENTION DISPLAY ROOM
PAGE 11	2007 CONVENTION AUCTION HIGHLIGHTS
PAGE 12	HOME AGAIN, HOME AGAIN: THE MORLEY JUG PART I
PAGE 14	CLASSIFIEDS
PAGE 15	RECENT FINDS & DEALS
PAGE 16	POTTERS PICNIC PHOTOS

MEMBERSHIP

A primary membership in the Red Wing Collectors Society is \$25 annually and an associate membership is \$10.

There must be at least one primary member per household in order to have associate membership. Members can pay for more than one year when renewing their membership. Contact the RWCS Business Office for additional details.

NEWSLETTER EDITOR

RWCS MEMBER RICK NATYNSKI
GENERAL DELIVERY: USPS • 13425 WATERTOWN PLANK ROAD
ELM GROVE, WI 53122-9998
RWCSNEWSLETTER@WI.RR.COM 414-416-WING (9464)

The Red Wing Collectors Society, Inc. Newsletter is published bi-monthly by the Red Wing Collectors Society, Inc. Suite 300 • 2000 West Main Street Red Wing, MN 55066.
Phone: 651-388-4004 Fax: 651-388-4042
WWW.REDWINGCOLLECTORS.ORG

Postmaster: Send address change to: Red Wing Collectors Society, Inc. Newsletter
PO Box 50 • Red Wing, MN 55066. USPS 015-791; ISSN 1096-1259.

Copyright © 2007 by the Red Wing Collectors Society, Inc. All rights reserved.
The Red Wing Collectors Society, Inc. does not guarantee the accuracy of articles submitted by individual members.

NEWS BRIEFS

SCHLEICHS INDUCTED INTO RWCS HALL

Jerry and Louise Schleich were inducted into the Red Wing Collectors Society Hall of Fame during the Society's annual business meeting on July 13. The couple is best known for establishing the Schleich Pottery Museum in Lincoln, Neb. in 2001. Jerry served as RWCS treasurer, played a leadership role within several chapters and was instrumental in creating the RWCS Foundation before passing away in February 2005. Louise has since carried on their passion for Red Wing by taking her husband's position on the Foundation Board.



Ron Linde presents a hall of fame plaque to Louise Schleich.

KILN CLEANER AWARDED SCHOLARSHIP



Diane Hallstrom presents Dustin Winterowd with a \$500 scholarship.

The RWCS Foundation surprised Red Wing's Dustin Winterowd at the Society's annual business meeting with a \$500 scholarship for his dedication in cleaning the historic tunnel kiln located in the Pottery Place parking lot. Dustin cleaned the kiln as his community service project for becoming an Eagle Scout, an honor he earned in May. He'll use the scholarship towards his college education at Mankato State University.

HANSONS SERVE FINAL YEAR AS PRE-REGISTRATION HEADS

After a decade of great work making onsite Convention registration a smooth process, RWCS members Chuck & Donna Hanson stepped down from their support position after the 2007 Convention. The couple celebrated their 10 years of service and their 50th wedding anniversary on July 14. Congratulations, Chuck & Donna! The Society appreciates your hard work. Jim & Joyce Sutherland and Jim & Karen Keys have stepped up to fill the Hansons' shoes.



Chuck & Donna Hanson

PURCHASE YOUR OWN PIECE OF HISTORY: THE RED WING POTTERIES LEDGER

Thanks to the RWCS Foundation, the Red Wing Potteries Ledger donated by Dave & Bonnie Hutchson made its debut at this year's Convention. The Foundation reproduced hundreds of copies of the 300-page Ledger and made it available for purchase to the membership. Covering the years of 1892 to 1893 and 1906 to 1914, the Ledger includes general expenses of the day and special orders for advertising pieces taken almost daily. Red Wing collectors are surely enjoying this wealth of information, especially those who have an appreciation for advertising stoneware. To purchase the Ledger with a credit card, call Diane Hallstrom at 651-388-7178 (daytime). The total including tax and shipping will be around \$56. (Shipping has ranged from \$6.40 to \$7.80 depending on its destination.)



ABOUT THE COVER

First pictured in the October 2006 *Red Wing Collectors Society Newsletter*, the F.A. Morley Jug caused quite a stir among collectors. "Where has it been all this time?" and "Where was the Morley store located?" were questions everybody wanted the answers to. Fortunately, much has been learned about the jug's history since then.

As the cover photo indicates, the monster jug is actually 30 gallons in size instead of the 20 gallons previously reported. Those who visited the RWCS Foundation Museum in Pottery Place during Convention in July were fortunate to see the jug, which is now on loan to the museum by its new owner. Who is it? Turn to page 12 to find out and read more about the jug's extensive history.



STACY WEGNER

Executive Director

Was the 2007 Convention awesome, or what?! Nearly 2,200 collectors were in town in July to celebrate the 30th Anniversary of the Red Wing Collectors Society. If you missed it, this issue of the newsletter will get you up to speed. You can also check out DVDs of the several educational seminars that were presented by calling or e-mailing the RWCS Business Office. Combined attendance of this year's seminars topped 1,000 people, which is fantastic!

With the support of the Board of Directors, the business office has launched a new program that challenges all members and chapters to recruit new primary memberships in the Society. The goal of the Refer a Member Program is to help the Society continue to grow by reaching out to people who collect Red Wing and enjoy sharing the rich history of the Red Wing Potteries.

For every new primary member that you recruit to join RWCS between the October Newsletter publication and July 1, your name will be entered into a drawing to win free Society membership for one year and registration to either the 2009 MidWinter GetTogether or the July Convention. Any member that recruits five or more new primary members to RWCS during the Refer a Member Program will automatically have their membership renewed for free for one year!

In addition to individual members getting involved in this wonderful program, it is also open to all RWCS Chapters! The chapter with the most new primary members to join the Society will have the first bragging rights to the traveling Little Brown Jug of Membership. This trophy will be presented at the 2008 Convention and the program will be an annual event.

To learn how to participate in the Refer a Member Program and earn a year of free membership, visit WWW.REDWINGCOLLECTORS.ORG, check out the October issue of the newsletter or call the business office.



TRAILS WEST QUILT RAFFLE RAISES \$2,500+ FOR RWCS FOUNDATION

Last year, Trails West Chapter Secretary Linda Russell (pictured at left) came up with the idea of putting together a quilt with squares from every RWCS Chapter to commemorate the Society's 30th Anniversary and ultimately benefit the RWCS Foundation. A year later, after an outpouring of support from the chapters and a countless number of stitches sewn, the Trails West project was a huge success, raising \$2,575.66 for the Foundation. The lucky winner of the queen-size quilt was Ron Gernentz of Red Wing. Way to go, Trails West and everyone else who made the raffle a success!



KIDSVIEW PLATE TALLIES \$200

Pictured at left with her creation is this year's KidsView Plate designer, Ingrid Koester. Ingrid had always wanted to be an artist and this was finally her chance to make it big! She has participated in KidsView for the past five years. The plate brought \$100 when it was sold in the Thursday Night Auction and an anonymous donor later added another \$100, saying the plate was much too beautiful to sell that low!

We have another stack of entries for the 2008 plate. The selection will be made at the 2008 MidWinter GetTogether in Des Moines with the winner being notified in

March. All of the proceeds from the plate sale go directly towards buying supplies for KidsView. In addition to the \$200 drawn in by the plate, the Golden State Chapter auctioned off member-donated items during one of its meetings and donated all of the proceeds to KidsView – a whopping \$1,634! Thanks, Golden State members!

- Sue Jones Tagliapietra, RWCS President & KidsView Co-Chair

DIRECTOR'S JUG SETS RECORD PRICE AT \$62,500!



You can mark down July 14, 2007 as the day that a new record was set for the highest price ever paid for a piece of Red Wing, because it's when a highly coveted Director's Jug sold privately for \$62,500.

Known by longtime collectors as the Slaith Jug, this piece first sold at the RWCS Convention Auction in July 1981, when Taugie and Beth Slaith bought it for a record \$2,650. The last time it was offered publicly was at an auction in Elkhorn, Wis. in 1990, when it sold for \$11,200 - another record. It changed hands for \$37,500 in a private sale about three years ago.

Although described as a 15 gallon beehive jug on page 32 of *Red Wing Stoneware*, the last owner said he believes it is actually more than 20 gallons in size, but he never filled it with water in fear that it might get damaged. Only one other Director's Jug is known to exist, and it sits in the RWCS Foundation Museum. It is believed the jugs were made for Red Wing Stoneware Co. directors around the turn of the century.

RWCS 30TH ANNIVERSARY COMMITTEE REPORT By Bonnie Myers

As the 30th Anniversary Committee chairperson, I would like to extend a special “thank you” to all of the members who served on the 30th Anniversary Committee. Each of you played an important role in the success of the special activities included in this year’s Convention to celebrate the 30th Anniversary of RWCS. I would also like to give a special “thank you” to my husband, Nick Marson. I could not have managed without him.



Todd Avery	Charlotte Ackerman
Laura L. Beall	Diane Hallstrom
Rick Natynski	Carol Riste
Leona Scherer	Sue Jones Tagliapietra
Stacy Wegner	Becky & Billy Winkles

Charter Members

It’s a great pleasure to recognize the Charter Members (pictured above) who were able to join us for the 30th Anniversary Reception and Business Meeting on Friday, July 13. A huge thank you is extended to all in attendance (and to all of the Charter Members who were not able to join us) for your dedication and hard work in passionately establishing the Red Wing Collectors Society 30 years ago.

014 - Marian Pitzen	002 - Char Hen (Representative from the Goodhue County Historical Society)	089 - Sandy & John Sorenson
174 - Dorothy Naseth	087 - Audrey Solberg	165 - Gail L. Peck
140 - Larry Peterson	148 - Jean Donovan	036 - Kathryn Schroder
165 - Dan DePasquale	178 - Joyce Anderson	065 - Georgia Nelson
		144 - Vi Malmquist
		098 - Delores Callstrom
		109 - Helen E. Bell
		056 - Beverly & Roger Blohm
		046 - La Verna & Darel Leipold
		024 - Carol & Kenneth Michel

Raffle Fundraiser



The 30th Anniversary Committee is proud to have facilitated the raffle ticket project to support the efforts of the RWCS Foundation. The RWCS Foundation is a national foundation dedicated to gathering historical information and items, presenting these to the public in informative ways, and preserving this cultural heritage specifically as it relates to the pottery industry that thrived in Red Wing. No other group has this as its primary mission. The Foundation also works to enhance the public’s knowledge and appreciation for pottery as an art form and an important part of American culture. Congratulations to the 30th Anniversary raffle winners and a huge thank you to everyone who purchased raffle tickets. The \$820 generated from ticket sales will be donated to the RWCS Foundation to support its work.

Jerry Wolf (pictured above with his sons) - original oil painting commissioned for the 30th Anniversary; Steve Brown – 1 night B&B stay at the St. James during 2008 Convention donated by Associated Bank of Red Wing; Mitzie Brehmer – set of 6 sample tiles of the 30th Anniversary Tile donated by Door Pottery.

30 Gallon Crock Room



Thanks to the following members for sharing their 30 gallon crock(s) and lid(s) as well as the 30 gallon shards during the 2007 RWCS Convention. As a group they made a vision that most of us will not be privileged to see again soon. These folks brought 30 gallon crocks from as close as Rochester & Hastings, Minn. and as far away as Oklahoma.

Nona Knapp	Ron Meixner	Doug Lanning	Matt Huepfel	Barney Olsen	Dennis Nygaard
Jack May	Richard Stillinger	Rick Natynski	Paul Gustafson	John Tremble	Chuck Hanson
Nick Marson	Austin Fjerestad				

30th Anniversary Print



In celebration of its 30th Anniversary, the Red Wing Collectors Society commissioned a limited edition print titled “30 Passionate Years....” Presented to each of the Society’s original Charter Members, the painting depicts memories from the first and second RWCS Conventions. Included is a photo of one of the Society’s founders, Lyndon Viel, along with the cover of his book, *The Clay Giants*. The painting also illustrates the first two Convention Buttons produced and the first *RWCS Newsletter* created in 1977 by Dave Newkirk. The photo in the lower right of the painting was based on a photo taken of Larry Peterson during one of the first two conventions and a photo from the second Convention in 1978 shows the red pickup truck from which brown jugs commemorating that Convention were distributed. The jug itself is also pictured, including the crock produced to commemorate the 1977 event. The artist, Sandy Hokanson, is an accomplished Minnesota painter of Americana and has produced several paintings and prints featuring Red Wing Stoneware. More of her artwork can be seen at www.HOKANSONART.COM.

The artist, Sandy Hokanson, is an accomplished Minnesota painter of Americana and has produced several paintings and prints featuring Red Wing Stoneware. More of her artwork can be seen at www.HOKANSONART.COM.

CHAPTER EVENTS



Nebraska Redwingers

Saturday, Sept. 8 at University of Nebraska Arts Department to tour the kilns and pottery production areas. Associate Professor Peter Pinnell will guide members through the pottery processes. Dinner and a brief business meeting will follow the tour at the home of Louise Schleich. For more specific information, contact Steve Splittgerber at RSPLITTGER@HOTMAIL.COM or 402-770-7600.

Wolverine Chapter

Noon Saturday, Sept. 29 at the home of Terry and Sue Speedy, 5079 S. Seymour Road, Swartz Creek, Mich. Potluck lunch will begin at noon with the meeting to follow. Members are encouraged to bring guests and something for Show & Tell. For additional information or driving directions, contact Charlotte Ackerman at CHARDAVE@CHARTER.NET or 989-832-2527, or Sue Speedy at THESPEEDYS@TCWIRELESS.US or at 810-938-3235. New members are always welcome to join the chapter!

Indiana Chapter

Noon Saturday, Sept. 29 at the home of Ron Keim, 58398 County Rd. 27, Goshen, In. 46528. Lunch is at noon with the meeting to follow at 1 p.m. For more information, contact Ron at RONKEIM@YAHOO.COM or 574-536-4116.

Lewis & Clark Chapter (Montana & North Dakota)

2 p.m. Saturday, Sept. 29 at the Royal Fork Buffet Restaurant, Fargo, ND. Meeting starts at 2 p.m. with dinner to follow. Please bring items or photos for Show & Tell. For directions or more information, call 952-242-4203.

Illinois Chapter

Noon Sunday, Sept. 30 at the Malik's home in Monee, Ill. Call Marv Osterholz at 815-624-6201 for more information.

Siouxland Redwingers

Noon Saturday, Oct. 6 at the Pizza Ranch in Tea, SD. Lunch begins at noon with the meeting to follow at 1 p.m. Contact Julie or Glenn Beall at GBEALL@LOGANET.NET or 712-644-2256 for directions or more information.

Sunshine State Redwingers

Noon Saturday, Nov. 10 at the home of Chapter President John Dougherty, 1792 Walden Pond Drive, Fort Pierce, Fla. 34945. Call John at 772-460-7920 for more information or directions. For further information regarding membership in the Sunshine State Redwingers Chapter, contact Chapter Secretary Darlene Duecker at SSRW@BELLSOUTH.NET or 954-560-9622.



VIEW 2007



Photos by
Jonathon Callicoat,
KidsView volunteer

Photo submitted by Marcene Pylkas

Photo submitted by Marcene Pylkas



ORWCS CONVENTION 2007



2007 CONVENTION DISPLAYS

Those who attended the 30th Anniversary RWCS Convention in 2007 were treated to marvelous displays. Visitors to the Display Room were understandably complimentary, and favorable comments were expressed to the displayers who volunteered to share their Red Wing collections and their time to Convention attendees.

We appreciate the work and creativity of all displayers and volunteers in helping make a well-rounded 2007 Display Room. Thanks also to Stacy Wegner and the RWCS Board of Directors for their dedication and support, and to Al Harteneck and the Red Wing High School Custodial Staff.

Glenn & Julie Ellen Beall, Display Room Chairs
GBEALL@LOGANET.NET or 712-644-2256

Dennis Yaeggi Rare Item Award: "10 Gallon Triple Ribcages" Double-handled Beehive Threshing Jug and Water Cooler by Rick Natynski & Jack May.



Other Rare Items displayed by: Dave Kuffel, Lowell Reed, Janice Strike, Eugene & Susan Petersen and Tina Wojtalewicz.



2007 Commemorative Display: "Beehive Jugs" by John Tremble & Matt Huepful. (non-competitive)

ART POTTERY



People's Choice: "Red Wing's Orchid Glaze 1962" by Jamie & Flo Jensen.

Best of Show: "Red Wing Ashtrays" by Todd Avery.



DINNERWARE



People's Choice and Best of Show: "Aunt Belle's Coming to Dinner" by Ron Linde.

Other Dinnerware Displays: "The Almost Line" by Todd Avery and "Pineapples" by Ruth Beall.

STONEWARE



People's Choice: "Ice Waters are So Cool" by Art Holliday.

Other Stoneware Displays: "Milwaukee, Wisconsin Advertising" by Bob Morawski, "The Three Bears" by Gretchen Voight and "Quality Control-Wrong Colored Stamps" by Jack May.

Best of Show: "The Red Wing Hexagon Bowl" by Dennis Nygaard.



MEMORABILIA



People's Choice and Best of Show: "Red Wing Photographs by George Flink" by Wayne & Jean Miller.



Chapter Display: "California Advertising" by Golden State Chapter. (non-competitive)

RWCS AUCTION BREAKS \$200,000!

The 2007 RWCS Convention Auction was a record-setter. Total sales for the Thursday Night Auction were \$200,030 for the 300-piece sale. This total eclipsed the old record by more than \$20,000! The Convention Auction can be summed up in two words: salt glaze!!

The top-selling piece was a 30 gallon lily crock that was front-stamped and stenciled "Made by Red Wing Stoneware Company" on the side. It nearly set a record for the Thursday Auction at \$13,750. It did not matter that it had hairlines and was repaired. A 2 gallon salt glaze crock bottom-signed "Minnesota Stoneware" with Chicago advertising went for \$8,900. Other salt glaze highlights include a 20 gallon salt glaze leaf crock with the date "3/3/94" written under the leaf, which commanded \$6,900; and a front-stamped 30 gallon butterfly crock, which went for a cool \$9,600.

A signed Minnesota Stoneware Cow and Calf sold for \$8,400. Lunch Hour plates still prove to be popular...one signed by the "Clay Shop Gang" dated 1965 went for \$1,000.

Thanks to the membership for putting in such great pieces this year. My thanks also go out to Houghton's Auction Service and all the Auction volunteers that helped me out this year.

If you would like a catalog with prices realized from this year's sale, please mail me a check (address on page 2) for \$3 made payable to "RWCS." Hope to see you all next year!

Jeff Floyd, RWCS Auction Manager



Auctioneer Todd Houghton makes the call for this fantastic 30 gallon salt glaze lily crock, which earned top honors at the July 12 RWCS Auction. Despite having hairlines and a repair, it drew a final bid of \$13,750.



6 gallon front-stamped salt glaze single-P water cooler, base chip and hairlines near spigot, \$8,000.



20 gallon dated salt glaze leaf crock, hairlines, \$6,900.



30 gallon front-stamped salt glaze butterfly crock, handle chip, \$9,600.



Red Wing 1915 Potters Excursion jug, chip & hairline, \$6,750.



5 gallon Elephant Ear Ice Water cooler, mint, \$3,300.



2 gallon Minnesota bottom-signed salt glaze target crock with stenciled Chicago advertising, mint, \$8,900.



1965 Lunch Hour Retirement plate signed "Clay Shop Gang," mint, \$1,000.



Minnesota Stoneware signed Albany slip Cow & Calf figure, base chip and missing horn, \$8,400.



White glaze triple-nude Athenian group table lamp, \$1,350.

OTHER PRICES REALIZED:

11-inch lion style lamp base in yellow glaze, hairline, \$175
60 gallon self-draining jar on metal stand, hairline, \$650
Bell style chicken feeder w/"Oak Leaf" advertising, \$200
12-inch #613 RumRill Pompeian style vase, \$150
"Pretty Red Wing" Indian maiden ashtray, \$210
3 qt. Provincial Bakeware medium casserole in original box, base crack, \$25

Town & Country salt & pepper set, \$450
2006 Nebraska Chapter Commemorative, \$150
Pink speckled "King of Tarts" cookie jar, \$400
1977 RWCS Commemorative, \$1,950
3 lb. bottom-signed Greyline butter pail, \$275
Hamm's popcorn bowl w/4 smaller bowls, \$1,000
50 gallon wing crock, \$3,000

Home Again, Home Again: The History of the F.A. Morley Jug-Part I

Story By
Larry Peterson,
owner of the
Morley jug



It's been fun tracing the steps and solving the mystery of the adventures of the Morley jug. In all my years of collecting, I've never had the opportunity to trace the journey of one of my pieces. I am in awe that this jug has survived in perfect condition for 110 years. One of the most fascinating aspects of its journey was where it went and how it came to become a highly prized and honored piece in the Red Wing Pottery Museum.

This impressive 30 gallon hand-turned advertising beehive jug is hand-decorated in three colors: black, blue and brown. It is 29 inches tall, 20 inches in diameter, and 64 inches in circumference. I am amazed how close in size this jug is to a 40 gallon crock, which typically measures 30 inches tall and 21 3/8 inches in diameter.

The uniqueness of this jug is its size and the three colors of hand-decorated advertising. It was made at the Red Wing Stoneware Co. for a saloon approximately four blocks from the factory where family members worked. The 20 gallon Pierron crock pictured on the cover is the only other three-color hand-decorated advertising stoneware piece known to exist.

Red Wing was making a limited number of white ware items in 1895. By 1897, which is probably when the Morley jug was manufactured, the company had advanced to producing large amounts of quality white ware. Jugs similar in size to the Morley jug are pictured in an 1898 photograph of the "Union Stoneware Company" booth taken at the Trans Mississippi & International Exposition in Omaha, Nebraska. This photograph has hundreds of pieces of white ware that the

Union Stoneware Company made for this Exposition. Two of the most important pieces in the display are two 30 gallon hand-turned advertising beehive jugs; one is sitting on an ornately decorated 40 gallon crock in the far right side of the picture. If these two jugs and a few other pieces in the photo still exist, they have yet to be discovered. This photo is the only documentation that these large jugs were ever produced by the Red Wing Stoneware Company.

Morley's Story

The Morley jug was made for Frank A. Morley, who owned a saloon at 1503 Main Street in Red Wing. As the photo at the upper right shows, it sat in the storefront window alongside two stoneware barrels that also advertised for the establishment.

Frank was born in Minnesota sometime in 1869. His parents had come from East Liverpool, England. He was the youngest of nine children to his mother, Martha, who was 44 years old at the time. He lived in Red Wing with the large family headed by his father, Charles.

Beginning at age 15, Frank worked at the Red Wing Stoneware Company with one of his older brothers, William. Another of Frank's brothers, S.L. (Samuel Lincoln) Morley (born in August of 1860 in Alton, Ill.), ran the Morley & Stromberg Grocery Store, which was located at 1529 Main Street next to the saloon. Eventually S.L. bought out Stromberg and the store was called Morley's Grocery Store.

We believe the 30 gallon jug hand-decorated



*"I am in awe
that this jug
has survived
in perfect
condition
for
110 years."*

“F.A. Morley, Dealer in Cigars Wines and Liquors” was made in 1897, around the time when Frank lived above the saloon with his wife, Elizabeth (Eisenbrand), and his mother, who was then widowed. Frank and Elizabeth were married less than a year before he went off to the Army to serve in the Spanish American War. The couple would never have the chance to have children, because he died in Manila on Aug. 30, 1898.

More recently in September of 1998, the Red Wing Republican Eagle ran colorful stories of the Spanish American War written by Elwood Karwand, who specialized in writing about the role of the press 100 years earlier during that war. F.A. Morley was mentioned several times as a “kind, caring leader” and “a gallant lieutenant.”

Frank reached the rank of First Lieutenant and was commander of company G at the time of his death. He was reported to have died abruptly of endocarditis, which is an inflammation of the heart muscle. Company G was already struggling since their commander, Capt. Oscar Seebach, was recovering from wounds at the time. Now they had suddenly lost their young First Lieutenant. There was a long description of the military funeral in Manila in the paper. The Republican Eagle reprint states that his death was “like a thunderbolt from the sky.” A year after the burial in Manila, he was moved to Oakwood Cemetery, Section F, in Red Wing.

S.L. Morley went on to take over the saloon and he became a very successful business man owning numerous real estate properties.

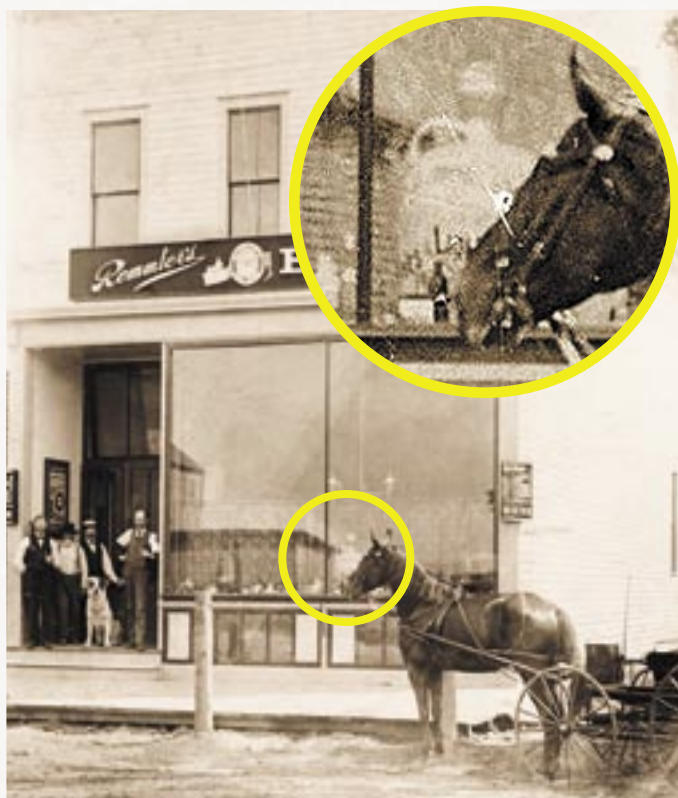
In the Family Until 1964

I was told by two of S.L. Morley’s grandchildren, Sam Struss and Mary Lou Morley, that the jug was moved from the saloon to S.L.’s cabin in approximately 1932. The Morley cabin was located on the island in Wisconsin overlooking the Mississippi River just a short distance from Red Wing. This photograph shows the cabin where the Morley jug sat in a corner of the porch, which is behind S.L. and the other family members. It sat outside for more than 30 years, making its way through all weather conditions without sustaining any damage. What a miracle!

The Morley cabin was sold in 1964 and S.L. Morley’s children decided to give the jug to Mr. Gilmer, owner of the Red Wing Potteries at the time. It is believed that at this, time the jug ended up at the Nelson’s Cigar Store on the corner of Main and Bush streets in Red Wing. Several people remember seeing the jug inside the store and putting gum and candy wrappers in the jug as they left the store. By the time the Red Wing Potteries closed in 1967, the jug was back at the Red Wing Potteries in Mr. Gilmer’s office.

It is believed that the jug was at home in Red Wing for only a short time longer before it took another road trip to Wisconsin, where it has been for the past 40 years. ■

Larry will share the remaining journey of the jug before it returned home to Red Wing in a coming issue of the Red Wing Collectors Society Newsletter.



(Upper left) F.A. Morley poses in his military uniform. The medal he earned is also shown. (Upper right) This 100-year-old photo shows the Morley jug in the window of Morley’s saloon. (Middle) An 1898 photograph of the Union Stoneware Company booth at the Trans Mississippi & International Exposition in Omaha. (Lower right) Standing at the far right, S.L. Morley poses with family at his Wisconsin cabin.

Classified ads are 15¢ per word; \$3 minimum charge.

Ads are divided into the following sections: Red Wing For Sale, Red Wing Wanted, Other Pottery For Sale, Other Pottery Wanted, Events, Auctions, Clubs & Publications and Web Sites, Announcements and Services. You will not be charged for these words, but please indicate which section your ad should be placed in. If ad is to run in more than one issue, please indicate at time of placement. (Note: the small number at the end of an ad tells when the ad expires, e.g., 12/07. Ads without dates are one-time ads.) Please type or print clearly and proof read before submission.

DISPLAY ADS

Display Ad Size	1x	6x
Full page	\$400	\$360
1/2 page (<i>horizontal or vertical</i>)	200	180
1/4 page	100	90
1/8 page	60	45

Display Ad Dimensions

Full Page	7 1/2 x 10
1/2 page (<i>horizontal or vertical</i>)	7 1/2 x 4 7/8
1/4 page	3 5/8 x 4 7/8
1/8 page	3 5/8 x 2 1/4

Display Ads are accepted on a first-come, first-served basis. The publisher reserves the right to refuse ads for any reason.

Ads must be supplied electronically as an EPS or PDF file for PC. Be sure to include all fonts used. If you are unsure about acceptability, inquire with the Editor. There is an additional 10 percent fee for design and makeup if needed. Camera-ready ads are not accepted. Unformatted or unreserved ads will be treated as classifieds.

DEADLINES

Issue	Ad Deadline	Editorial Deadline
February	Jan. 10	Jan. 1
April	March 10	March 1
June	May 10	May 1
August	July 25	July 15
October	Sept. 10	Sept. 1
December	Nov. 10	Nov. 1

EDITOR ADDRESS

Make checks payable to RWCS and mail with ads to: Rick Natynski
 General Delivery: USPS
 13425 Watertown Plank Road
 Elm Grove, WI 53122-9998
 Ads may also be e-mailed with checks sent separately.

RED WING FOR SALE

Wood crock lids (as seen in Pottery Place parking lot during Convention) for stacking crocks or use larger crocks for tables/storage. Solid pine 3/4-inch thick available unfinished, clear coat or with dark or grey stain. 2, 3 or 4 gal. \$17; 5/6 gal. \$19; 8 gal. \$22; 10 gal. \$24; 12 gal. \$26; 15 gal. \$28; 20 gal. \$30; larger sizes available on request. Subtract \$5 per lid if unfinished. Shipping extra. Call Bob at 262-853-8269.

Original RWUSCO Spongeware pitcher with Hull, Iowa advertising in excellent condition. No repairs. We have another identical pitcher that is cracked. Also a 10-inch Cherryband pitcher in excellent condition. Call 712-472-2187.

Handles and wooden lids. Send SASE for flyer to Larsen's Collectibles, 757 120th Street, Hampton, Iowa 50441-7555. Phone 641-866-6733. 8/08

40 gal wing crock, \$1,000; 8 gal birchleaf churn, \$2,700; 1/2 gal dome-top fruit jar, \$2,500; 20 lb. wing butter crock, \$950; 2 gal brown top ball lock jar, \$325; 2 gal brown top wing jug, \$300. Call Sid at 701-749-2586.

Dollen Art Pottery Collection, coming to eBay September 2, 2007. Featuring the actual Red Wing Art Pottery that was photographed and used in B.L. Dollen books, *Red Wing Art Pottery*, *Red Wing Art Pottery Book II*, and *Encyclopedia of Red Wing Art Pottery*. Go to BLDOLLEN.COM. This will take you to our Web site, which will have an Auction Event link to eBay listing Red Wing pieces. Go to the Web site September 2, 2007 for more details and register to be notified of future event pieces. BLDOLLEN.COM 12/07

40 gal 6" bright wing, 30 1/2" tall, 22" across; 30 gal 6" bright wing & 30, MINT; 20 gal 6" bright wing & 20, MINT; 15 gal 4" wing, MINT; 12 gal birchleaf. Other crocks: four 10 gal, three 8 gal, one 6 gal, one 4 gal. Three 5 gal water coolers, two 5 gal churns. Twelve various jugs, lids and much more. Call 218-686-7827. 10/07

Commemoratives - all in mint condition: 1977, \$1,900; 1978, \$1,450; 1979, \$1,200; 1980, \$900. Call 952-446-9662.

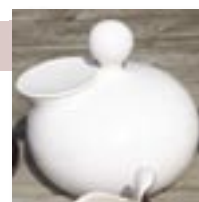
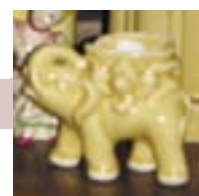
AUCTIONS

2-Day Retirement Auction Sept. 7 & 8, 2007. 10 a.m. each day. Eagles Club, 316 S. 2nd St., Aberdeen, SD, 6 hrs. west of Minneapolis, Dick & Gloria Lauinger. Fri. Sept. 7: set of RW Lute Song pottery dishes, 82 pcs.; Birchleaf crocks: 3, 4, 5, 6, & 8 gal.; Birchleaf 3 gal shoulder jug, Birchleaf 3 gal butter churn w/stomper, no lid. Four 2 gal crocks: sm. & lg. wing, blue & black birchleaves. Sat. Sept. 8: Water coolers: 2, 3, 4, gal. sm. wing, 4 gal, lid has a side chip. 5 gal, cooler lg. wing, has a nude lady decal over the wing. Other RW: Round-Up cookie jar has 2 flakes on side of lid, 2 tallest sections refrigerator jars, 1/2 gal, canning jar, NS 11" brown milk pan w/raised star on base, 9" bottom-signed blue bowl, 4 spongeware bowls, 5 gal beehive jug, lg. wing, base chip; 2 gal, molded Albany Slip jug w/RW 2 mark. Elephant Ear crocks: two 2 gal, 3 gal, & 6 gal. Advertising: 1 gallon crock Eureka, SD Bazaar, 1 Eureka butter crock "Golden Rule Store", 2 Aberdeen Tea Store butter crocks, 8" saffron Farmers Union Nappy Aberdeen, Saffron Farmer's Grain & Coal beater jar, RW Aberdeen beater jar, 2 hairlines; 7" Farmer's Grain & Coal bowl, crack, Aberdeen bean pot; 2 Honegger Bros, whiskey jugs, Aberdeen, 9" spongeware bowl & 7" gray bowl Groton, SD., Sunberg Bros, groceries & meats (Rochester) lg. spongeband pitcher. Salt glaze crocks: 2 gal P, 2 gal double P, 2 gal Target, 2 gal Target, bottom sgnd. MN stoneware (inside rim chip); Two 3 gal Lazy 8 w/Targets; 4 gal P, 4 gal double P, 4 gal hd. ptd. 4, 5 gal philodendron leaf hairline around top; 6 gal, leaf incised RW mark on front under leaf; 12 gal butterfly w/molded hdls. Other stoneware: 3 gal crock by Ft. Dodge Stoneware Co., 1 gal w/blue flowers, Reid Murdoch pickle keeper, no lid; 5 gal Western beehive jug, blue Dutch farm scene pitcher. Questions? Call 605-380-4409 and ask for Gloria Lauinger. Web site: WWW.JARKWORLIE.COM Auctioneer's phone: 605-225-1828. E-mail: JARKAUCTION@NVC.NET

RECENT FINDS & DEALS

Did you find a rare piece or a great deal worth sharing? Briefly describe the item, where it was sold, date purchased, venue (store, auction, etc.) and price paid. Send in on a post card, or if you'd like to include a photo for publication, e-mail RWCSNEWSLETTER@WI.RR.COM, or enclose in an envelope. Multiple submissions result in multiple entries in the Newsletter Special Commemorative Lottery at the 2008 Convention. Send to the editor at the address on page 2. All entries received between July 2007 and June of 2008 are eligible whether published or not. Please keep submittals with purchase dates within six months of the newsletter issue.

ITEM	LOCATION	DATE	VENUE	PRICE
Forest Green Town & Country Mustard Jar	Claremont, Minn.	4/07	Auction	\$12. ⁰⁰
#1280 Crackle Turquoise Bronze-lined Planter	Spring Valley, Minn.	5/07	Auction	\$2. ⁰⁰
Gypsy Trail Plain Ivory Salt & Pepper Shakers, mint	Rochester, Minn.	6/07	Garage sale	\$2. ⁰⁰
Reed Brown 5-inch Mixing Bowl, mint	Rochester, Minn.	6/07	Garage sale	\$2. ⁰⁰
Smallest Yellow Inkstamp Elephant	Hastings, Minn.	7/07	Antique shop	\$5. ⁵⁸
Bob White Trivet, mint		7/07	eBay	\$76. ⁵⁵
Small White Schmoos Shaker	Red Wing, Minn.	7/07	Street sale	\$30. ⁰⁰
White Town & Country Soup Tureen	Stewartville, Minn.	7/07	Auction	\$1. ⁰⁰
1987 RWCS Commemorative, mint	Forest Lake, Minn.	8/07	Private sale	\$15. ⁰⁰
1988 RWCS Commemorative, mint	Forest Lake, Minn.	8/07	Private sale	\$10. ⁰⁰
10 gal Salt Glaze Leaf Crock Side-stamped "Minnesota Stoneware," hairlines	Madison, Wis.	8/07	Antique shop	\$48. ⁰⁰



RED WING WANTED

4 gallon birch leaf water cooler with spigot, Union Stoneware Co. or Red Wing Union Stoneware Co. ovals, mint or near mint condition. Must have pictures available to e-mail. Call evenings 319-337-6975.

CLUBS AND PUBLICATIONS

2005 stoneware book (*Antique Trader Stoneware Price Guide*); includes Red Wing; Monmouth-Western; Blue/White; Eastern U.S. 288 pages; colored photos; \$20 postage paid. Gail Peck, 2121 Pearl, Fremont, NE 68025; 402-721-5721. 12/07

2006 values for *Red Wing Stoneware* and 2007/2008 values for *Red Wing Collectibles!* \$9.95 each or \$17.95 for both plus \$2/\$2.50 postage, respectively. Quantity discounts available. Gail Peck, 2121 Pearl, Fremont, NE 68025; 402-721-5721. 12/07

Blue & White Pottery Club – A membership form is available on the club's Web site: www.BLUEANDWHITEPOTTERY.ORG. Annual membership is \$15 for first member, \$5 each additional member and \$1 for members under 12 years old. You can also write to B&W Pottery Club, PO Box 460517, Aurora, CO 80015.

RIDING THE MISSISSIPPI TO CONVENTION

Dear Editor:

Thanks to the entire force of great dedicated Red Wingers for putting together such a wonderful 30th Anniversary gathering. The Convention is always part of our summer plans.



From left to right: Ted, Tim, Veronica and Joanie

After two decades of driving to Red Wing, we decided to make our way from St. Paul by river this year. Instead of enjoying Red Wing's view of the Mississippi we marveled at the beauty the city holds from the water.

In addition to the pottery treasures we found at the Convention this year and all of the activities we attended, the 30th Anniversary Convention will definitely be part of our "reMEMBERing" for many years to come.

Sincerely, Joan & Ted Brinkman
and Veronica & Tim Wilson



2007 POTTERS PICNIC



COMING IN THE OCTOBER ISSUE...



OUR FIRST LOOK
AT THE POTTERIES
LEDGER

THE "ALMOST"
DINNERWARE LINE

