



35th Annual National Convention

# Stirring Up The Memories

July 7-9, 2011

Red Wing High School



A special Convention supplement produced by the Republican Eagle in partnership with the Red Wing Collectors Society, Inc.

## Welcome from the President

I would like to extend to each of you a heartfelt welcome to the 2011 Red Wing Collector's Society Convention. Because of your support, your membership in the society, and your dedication to collecting Red Wing Stoneware/Pottery/Dinnerware you have made the Red Wing Collector's Society the premier pottery organization in the United States.

Committee chair-people and Stacy have worked extremely hard and diligently so each of us can enjoy the convention. Additionally, without the volunteer help and the good heart of many people this convention just could not happen. A lot of hard work goes into each event that we take for granted. As always a thank you goes to the people and business of Red Wing and the surrounding area for their support of our Society and annual convention.

This year's convention promises to be a great one. I sincerely hope that you enjoy the activities on the program this year. The picnic is always enjoyable and a time to socialize and meet friends while the banquet offers a good meal and a time to relax after the frantic hunt for items at the show and sale. Baskets by the State Chapters was a huge hit last year and we all wait with excitement to see what this year's baskets might bring. The creation of a new tile to add to last year's tile means we will have the start of a "new set" and collecting sets is fun. Kids View is a unique and fun event for children and the excitement displayed by the "kids" brings a smile to all of us. This year we are embarking on a new program for young-adults who are "graduating" from Kids View. We wait with eagerness to see this program unfold. At the business meeting this year I hope to present a program that will focus on increasing membership and at the same time demonstrate tangible support for the Red Wing Foundation. I hope you can make the meeting.

Again, I am excited about this year's Convention and extend to you a huge WELCOME.

Dan Depasquale  
President,  
Red Wing Collectors Society

## Welcome from the Executive Director

Welcome Pottery Collectors to the 35th Annual Convention Stirring up the Memories! This week will be the kickoff celebration of the 35th Anniversary of the Red Wing Collectors Society. It is so exciting to think that our organization has been gathering in Red Wing for 35 years from our start at the Goodhue County Historical Society to the Red Wing High School the Society has a lot to look back and be proud.

This year's supplement is a great way to get you started on making memories at the 2011 Convention. The Red Wing Republican Eagle, Ruth Nerhaugen, and the RWCS have combined our effort to make sure you have all the Convention information right here!

- Education Schedule and Speaker information
- Official Convention Schedule
- Articles and New events
- Crock Hunt 2011

And So Much More

THANK YOU to everyone – members, volunteers, managers, support positions, Red Wing area businesses, Republican Eagle staff, Red Wing High School, St. James Hotel, City of Red Wing and those who make everything possible. Without so many people the Society would not be kicking off its 35th Anniversary Celebration.

Have a great Convention!

Stacy L. Wegner  
Executive Director  
swegner@RedWingCollectors.org



Dan DePasquale  
President



Stacy Wegner  
Executive Director

## Welcome from the Mayor

Welcome to Red Wing! On behalf of the City of Red Wing, I want to thank you for coming to the 35th Annual Red Wing Collectors Society Convention.

Red Wing is a community without bounds – a special place to live, work and raise a family. This rivertown truly represents the best of the past, present and future.

Our city cherishes its historic past as demonstrated by the preservation of numerous landmarks. Red Wing was ranked 23rd among the most historic places to visit in the world by the National Geographic Traveler magazine. We have benefited immensely from the investments of our city fathers who took steps to ensure Red Wing will remain vibrant for their children, grandchildren and generations thereafter.

Red Wing is a blue-ribbon community attractive to young and old, no matter your needs or your interests. It has all the amenities for you to call home and live comfortably – excellent schools, diversified employment and top-notch health care. It's close enough to the Twin Cities to take in a sporting event. And it is far enough away to maintain its distinctive charm. Together, these elements add up to a superb and vibrant quality of life.

Thanks for giving us the opportunity to share our great city with you. Come for a visit, or stay for a lifetime.

Sincerely,  
Dennis Egan, Mayor  
City of Red Wing, Minnesota



Dennis Egan  
Mayor of Red Wing

## Welcome from the History Center

It's convention time again—when did that happen? Time certainly flies! We are so happy and pleased to welcome the Red Wing Collectors Society and its Chapters to Red Wing and the history center for another Convention. We anticipate renewing the friendships that we have made (and making new friends) and hope to visit with a number of you at the history center as well as at the Convention.

Conventions offer a myriad of opportunities for fun and education—opportunities to meet new people and discover new things, as well as a chance to renew friendships. Your Convention is a splendid chance to learn about Red Wing's history, Red Wing pottery and stoneware, to introduce children and grandchildren to the area and pottery and to indulge your enthusiasm for collecting. We hope that you enjoy your



The Goodhue County History Center is located at 1166 Oak St., Red Wing.

time with us in Red Wing. Take this occasion to meet new people and learn something new—we always learn from you! We will greet you as you visit the history center!

Char Henn  
Director/CEO, Goodhue County  
Historical Society

## On the cover...

This cover features the 3, 35 gallon crocks and 20 of the 35, 2 gallon crocks produced in recognition of the 35th Annual Convention. These pieces will be prizes and auctioned throughout the 2011 Convention.

Photos submitted by: Mary Ouret, RWCS Member and Red Wing Photography Club officer

# Johnson will address Convention banquet

By Ruth Nerhaugen  
Contributor

Author Frederick L. Johnson, a Red Wing native with roots in Goodhue County's clay industry, will be keynote speaker at the 2011 Red Wing Collectors Society banquet.

The banquet will be at 6:30 p.m. July 9 at the St. James Hotel. Limited tickets are available at Convention headquarters at Red Wing High School.

Johnson will talk about his family's history in the pottery industry.

"The families of my father and mother had deep connections to Red Wing Potteries," he said.

His father, also Frederick Johnson, was born and reared at Claybank, near Goodhue, where his father Albin Johnson was a foreman in the pits.

"Albin was born in Sweden, and being bilingual helped in the pits with translation," Johnson said, adding, "His wife Amanda raised their three children there amongst the itinerant Swedish miners — tough work with lots of turnovers."

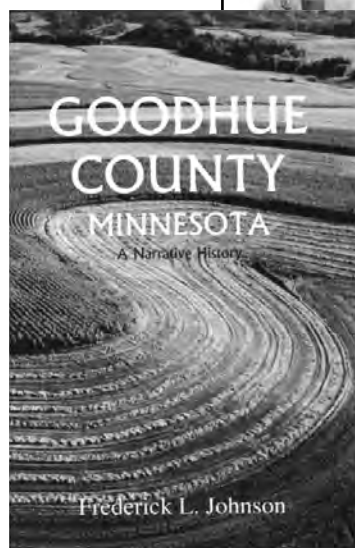
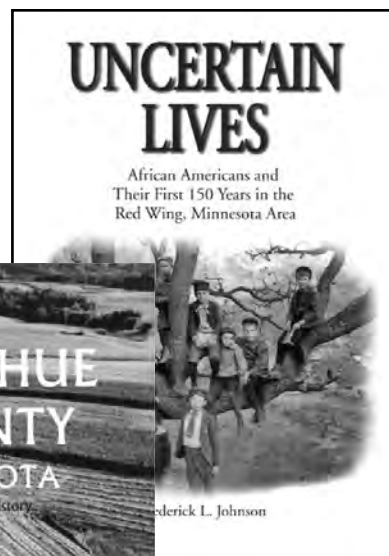
Amanda Johnson wrote a brief autobiography that brought out the woman's point of view about Claybank. Johnson said he used some of her stories in his book "Goodhue County, Minnesota: A Narrative History," published in 2000 by the Goodhue County Historical Society.

In addition, Johnson's father wrote about the clay pits and Claybank, and his father's brother, Vernold, wrote a brief and interesting 13-page history of the clay pits titled "History of the Clay Pits Near Claybank and Bellechester," complete with historic photographs.

The industry also is covered in Johnson's "Goodhue County Minnesota."

On the other side of his family, Johnson's mother's father, Ed Engeldinger, started working in the potteries as a teenager and remained there his entire life.

"He was a foreman in the



1940s into the 1950s," Johnson said, and three of his sons worked there as temps when they were teenagers. The family lived in Red

Wing's West End.

Johnson included a section on the West End, its people and its industries in a sesquicentennial history he wrote for the community, "Red Wing, A Portable History."

Johnson has written several other books based on local history, including the story of the Sea Wing disaster, Red Wing's first African-American family and the history of ski jumping.

Most recently he released a pair of suburban histories, "Richfield: Minnesota's Oldest Suburb," and "Suburban Dawn: The Emergence of Richfield, Edina and Bloomington." Both won merit awards from the American Association of State and Local History. A similar history of Lake Minnetonka is in the works.

Johnson said he is looking at pursuing another local project. "My interest and affection for the Red Wing area keeps pulling me back," he said.



- Breakfast & Lunches
- Homemade Baked Goods
- Wholesome Breads
- Coffee - Espresso
- Ice Cream



*Potter, Mark Connolly and third generation owner, Scott Gillmer feature the Special, Limited Edition 15th Anniversary Crock, Salt Glazed and Bottom Stamped. Only 50 crocks made!*

## 15th Anniversary Collectors Firing Friday, July 8th

Doors open at 8 a.m.

Every Piece will be stamped with our Limited Edition 15th Anniversary stamp.

Sales of the piece begin at 8:00 a.m.

1 per customer on a first come, first served basis.

- Zinc Glazed Pottery • Red Wing Pottery T-Shirts
- Collectors Books • Personalize your own piece of Red Wing Pottery



Old West Main St., Red Wing • 651-388-3562 or 1-800-228-0174 • Open 7 days a week

# Individually decorated crocks represent Chapters, Foundation

By Ruth Nerhaugen  
Contributor

**T**hirty-five 2-gallon crocks, each with a unique design, were made by Maple City Pottery to help commemorate the Red Wing Collectors Society's 35th Convention.

All will be auctioned at various events

during Convention weekend.

"I contacted the state Chapters" about participating, said Commemorative Manager Bob Morawski of New Berlin, Wis. About a dozen of them agreed to provide artwork, such as logos, representing their organizations.

In addition to determining the design, the club also could decide if they wanted their crock to be salt-glazed with blue design

or zinc glazed, which allows a variety of colors in the design.

The RWCS Foundation provided designs for four crocks, Morawski said, and the remaining crocks were divided between the society and Kids View, which also did special designs.

"They all look different," said Bob Downs of Maple City Pottery in Monmouth, Ill., which also made three 35-

gallon crocks and this year's commemorative. Much of the design work was hand-done by a Maple City decorator, Downs said.

If the crocks prove to be popular, some sort of 2-gallon individualized piece may become a yearly event for chapters, Morawski said.

# 35th anniversary tile is cobalt with birch leaves

By Ruth Nerhaugen  
Contributor

**D**oor Pottery, which made an oxblood red tile with a wing for the Red Wing Collectors Society's 30th anniversary, has created another unique piece to commemorate the Society's 35th Convention.

"We learned a lot" from the first project, said potter Scott Draves, and refined the process for this year's tile.

The 2011 tile, 4 inches square, is a "shiny, bright cobalt blue" with two Red Wing birch leaves, similar to the familiar Red Wing Potteries design, plus the years 1977-2011 and "35th Annual Convention."

"It's a pretty simple, elegant tile," Draves said, with lighter blue highlights so the design stands out and a blue border. "Door Pottery" is stamped on back.

The Madison, Wis., pottery started the project early and completed it in plenty of time for the Convention. It will be available only at the Convention; tiles will not be shipped.

"This tile project really went smooth," Draves said.

He began by designing the tile, working on a computer. A rubber stamp was made of the design, and it was used to make a temporary plaster mold. He pressed the tile using that mold, then cleaned it up. The permanent mold was made of that pressing.

"That took a month alone," Draves said.

"The entire process was hands-on," he stressed.

"We probably pressed 700" in wet clay to be assured of 500 flawless tiles, he said, noting that number is about half of the number made for the 30th anniversary.

Then it was decided to spray the tiles "to fill every nook and cranny" instead of dipping them like they did five years ago.

That meant making a spray booth for the project.

The next step was to hand-wipe each tile, which occupied an assembly line of workers for about four days.

The tiles then were kiln-fired.

"I had to buy all new kiln shelving," Draves said, because the tiles needed to be flat when fired. Unfortunately, he discovered that the type of kiln shelving he needed no longer is available in the United States.

"These came from England," he



**Potter Scott Draves of Door Pottery created a cobalt blue tile in celebration of the Red Wing Collectors Society's 35th anniversary. A limited supply will be available at the convention.**



said.

The tiles were loaded into a gas-fired updraft kiln and fired for 10 hours at 2,350 degrees. It took three firings to complete them all.

Door Pottery [www.doorpottery.com](http://www.doorpottery.com) was founded by Draves in 2001 as a small studio producing art pottery in the Arts & Crafts tradition. It has four fulltime employees, including a potter, a decorator, an office manager and Draves, who does "all of the above plus the firing."

"We started making tiles right away" he said, but because of a slow market for them, the pottery discontinued tiles in 2006 and

now focuses largely on vases.

But when the collectors society called about producing another anniversary tile, Draves decided "We can do that" and accepted the commission.

Door Pottery art pottery is sold throughout the United States. Locally, it can be found at Hallstrom Florist in downtown Red Wing.

Many of the 35th tiles have been reserved through pre-ordering, but a limited number will be available at the Convention, RWCS Executive Director Stacy Wegner said. Price is \$28 – the same as five years ago.

# Society reaches out using social media

By Ruth Nerhaugen  
Contributor

**Y**ou can never have too many friends.

In this age of Facebook and Twitter, Red Wing Collectors Society Executive Director Stacy Wegner has added social media to the ways she reaches out to Red Wing collectors and prospective new members.

"Social media is really great for the society," Wegner said. "It's a way for our members to communicate online and a way to reach people who collect Red Wing and are not aware of the society and all of our resources."

The Society has a Facebook page - just do a search for Red Wing Collectors Society - and a Twitter account @RWPottery. Wegner posts and tweets, with some help from Society members who submit items or write 140-character tweets.

"We still use the traditional methods" of communicating with members, she noted, including the newsletter, which is written by Rick Natynski of Pewaukee, Wis.

There are also e-mail blasts from director@redwingcollectors.org, and the

society's website, [www.redwingcollectors.org](http://www.redwingcollectors.org).

On Facebook, the society has both a group page and a fan page, Wegner said. In addition, a few chapters have started their own groups and established their own pages. A simple search on Facebook will identify them, plus some links can be found on the society's website.

The group page is open to anyone who wants to be a friend; it's not necessary to be a Society member, although people can join the RWCS through Facebook.

A lot of the traffic she sees on the page is questions from members and nonmembers, Wegner said. They want to know the value of an item, or may be looking for a special piece. Members help answer questions and share information.

Wegner also uses the page to get the word out about auctions and sales.

The membership can be a huge resource, she noted, explaining that the Society issued the 16,000th membership number this spring via Facebook.

"It's a great place if people want to know something about Red Wing Pottery!" Wegner said, "or network with other collectors, or know what's going on - or just see

cool photos."

There's also a RW Pottery fan page on Facebook, she said; she populates that page, too. It's a way to get news out to fans of Red Wing.

In addition, Kids View has its own Facebook page, which started up in January. It offers similar information and connections.

Wegner pointed out that social media "is how young people communicate." Many have "apps" on their phones that let them stay in touch that way.

She sees communicating by Facebook as "bringing Red Wing into the 21st Century of technology.

"To me it's important because I can get information out to members. It's also a tool to recruit new members, and to answer questions. That's important, too." And, she added, it's a way to direct people to the society's website.

Twitter, Wegner said, "is another outlet for information that I can share with people intent on learning about Red Wing," or about what the society is doing.

Although tweeting is not as popular among pottery collectors as hooking up to

Facebook, Wegner said she has a following that includes antique collectors, auction houses, antique shops, publications and others who want to be up-to-date on the Society's activities.

"It's quicker than a press release," she said, and she can use it, too, to drive traffic to the website, where more information can be posted.

"You can just follow someone," Wegner noted. "You don't have to tweet; you can just decide to be a follower" via your computer or a phone app. For example, she follows accounts such as the History Channel, Antique Trader and the Republican Eagle newspaper.

In her tweets, Wegner said she often includes information about the community as well as about the society.

"For people who want to learn more about Red Wing, for the casual collector who is unsure about joining the society as a member," she said, "social media is a great way to learn about and experience the society for free."



## Red Wing Pottery Museum

Learn the history of the Red Wing clay industries

**FREE admission**



Located on 2nd floor  
Pottery Place Center  
[rwcsfoundation.org](http://rwcsfoundation.org)

Over 12,000 items on display  
Open Daily

## AL'S ANTIQUE MALL

*New merchandise arrives almost daily*

**25% OFF**  
**All Red Wing Pottery**  
**July 1-9, 2011**

**512 PLUM STREET** (Across from Salvation Army)  
**RED WING, MN 55066**  
651-388-0572 • Toll Free: (888) 388-0572  
Fax: (651) 388-7474

Hours: Mon.-Sat. 9am to 5 pm; Sun 10am to 5pm  
Extended Convention Hours: 9am to 8pm Wed.-Sat.

*"Come Join Us in Red Wing"*  
*Al & Cathy Novek*

# 2011 Convention Schedule Red Wing High School, Red Wing, MN

TIME	ACTIVITY	LOCATION
<b>Wednesday, July 6</b>		
7:00 – 12:00	Board of Directors Meeting	L 100
11:00 – 3:00	<b>MEATHEADS Brat Feed hosted by Red Wing Pottery and Shops</b> (badge pick up for pre-registered attendees)	<b>Red Wing Pottery &amp; Shops Lot</b>
	Membership Tent Meet and Greet	Gymnasium
12:00 – 3:00	Auction Check-In, Catalogs for Sale	J 100 Pod
12:00 – 3:00	Display: set up by appointment	<b>RW Pottery Museum</b>
7:00	<b>Wine &amp; Cheese Fundraiser</b>	<b>2nd floor potter bldg</b>
<b>Thursday, July 7</b>		
8:00 – 4:00	Courtyard Café Open	Courtyard Café
8:00 – 1:00	Set up the Display and Rare Items	J 100 Pod
8:00 – 6:30	<b>Registration Opens</b>	Courtyard Café
8:00 – 10:00	Chapter Presidents Meeting	L 100
8:00 – 4:00	Ephraim Pottery Demonstration	Courtyard Café
8:00 – 6:30	Gift Basket Silent Auction Winners announced at Business Meeting	Courtyard Café
8:00 – 4:00	Volunteer Room Open	Teachers Lounge
8:00 – 10:00	Commemorative Distribution Silent Auction Opens	H Pod
8:00 – 11:00	Auction Check-In	Gymnasium
8:00 – ???	Distribution of Bid Numbers; Auction Catalog for Sale	Gymnasium
9:00 – 3:30	Sale of Educational Material	Courtyard Café
9:00 – 10:00	<b>Orientation for First Timers</b>	<b>Choir Room C-100</b>
10:00 – 12:30	<b>NEW: Young Collectors Program</b>	<b>Courtyard Café</b>
<b>Thursday, July 7 cont.</b>		
10:00 – 10:30	2011 Slide Show	Auditorium
10:30 – 12:00	<b>Welcome Session</b>	<b>Auditorium</b>
	<b>Keynote Address: Dr. Ronald Schirmer</b> Associated Professor, Department of Anthropology Minnesota State University, Mankato	
8:00 – 12:00	Kids View Auction Check-In	Art Room
1:00 – 3:45	<b>Auction Preview</b>	<b>Gymnasium</b>
12:00 – 12:30	<b>NEW: Kids View Volunteer Training Session</b>	<b>Art Room</b>
12:30 – 1:00	<b>KIDS VIEW REGISTRATION</b>	<b>Art Room</b>
1:00 – 2:00	<b>Chapter Meetings</b>	<b>J200 Rooms</b> (see schedule)
1:00 – 3:00	<b>Kids View Seminar &amp; Auction</b>	<b>Art Room/Auditorium</b>
1:00 – 4:00	Commemorative Distribution	H 100 Pod
4:30 – ???	<b>Auction</b>	<b>Gymnasium</b>
3:00 – 7:00	Displays open for viewing	J 100 Pod
<b>Friday, July 8</b>		
8:00 – 3:00	<b>Registration Opens</b>	Courtyard Café
8:00 – 1:30	Courtyard Café Open	Courtyard Café
8:00 – 3:00	Gift Basket Silent Auction Winners announced at Business Meeting	Courtyard Café
8:00 – 3:00	Volunteer Room Open	Teachers Lounge
9:00 – 10:50	Commemorative Distribution & Silent Auction	H 100 Pod
8:30 – 3:00	Displays Open	J 100 Pod
9:00 – 3:20	Sale of Educational Materials	Courtyard Café
9:00 – 10:00	<b>Orientation for First Timers</b>	<b>Choir Room C-100</b>
9:00 – 10:00	HAUL IN Show and Sale/Souvenir Items	Gymnasium
10:00 – 12:00	<b>NEW: Young Collectors Program</b>	<b>Courtyard Café</b>
10:00 – 10:50	<b>Adult Educational Seminars</b>	<b>H 200 Rooms</b> (see schedule)
10:00 – 10:50	<b>Kids View Registration</b> (lunch provided)	<b>Art Room</b>
10:50 – 2:20	<b>Kids View Seminars</b>	<b>Art Room</b>
11:00 – 11:50	Adult Educational Seminars	H 200 Rooms (see schedule)
11:00 – 2:20	KidsView Seminars	Art Room
8:00 – 3:30	Ephraim Pottery Demonstration	Courtyard Café
12:30 – 1:20	Adult Educational Seminars	H 200 Rooms (see schedule)
1:30 – 2:20	Adult Educational Seminars	H 200 Rooms (see schedule)
1:30 – 3:00	Commemorative Distribution and Silent Auctions	H 100 Pod
2:15 – 3:00	HAUL IN Show and Sale/Souvenir Items	Gymnasium
3:15 – 5:30	<b>Annual Business Meeting</b>	<b>Auditorium</b>
6:00 p.m. – 8:00	<b>Picnic (serving until 7:30 p.m.)</b> (Located in the center of Colvill Park near the new playground)	<b>NEW LOCATION</b> <b>Courtyard Colvill Park</b>
<b>Saturday, July 9</b>		
8:00 – 9:00	HAUL IN Show and Sale	Gymnasium
8:00 – 10:30	<b>Registration Opens</b>	Courtyard Café
8:00 – 10:30	Commemorative Distribution Silent Auction Close at 10:30	H 100 Pod
8:00 – 11:00	Kids View Plate Pick Up	Courtyard Café
8:00 – 11:00	Auction Prices-Realized Catalogs for Sale	Courtyard Café/Gym
8:00 – 12:00	Display: Open to the Public	J 100 Pod
9:00 – 10:30	<b>Show and Sale Open to Registered Members ONLY</b>	<b>Gymnasium</b>
10:30 – 1:30	Show and Sale Open to Public	Gymnasium
9:30 – 1:00	Commemorative Lottery (while supplies last)	H 100 Pod
1:30 – 3:00	Show and Sale Removal	Gymnasium
12:00 – 3:00	Display Removal	J 100 Pod
5:30 p.m. – 6:30	So Long Mixer	St. James Hotel Jimmy's Pub
6:30 p.m.	<b>Banquet Dinner</b>	St. James Hotel

**Wiederholt's**  
SUPPER CLUB

STEAKS • SEAFOOD  
COCKTAIL LOUNGE

DINING AT  
ITS FINEST!

Hours:  
Mon.-Sat. 4:30-10:30  
Sun. 11:30-9:00

Reservations Phone  
651-437-3528 or  
507-263-2263

15 miles North  
of Red Wing  
on Highway 61  
(in Miesville)



Show your 2011  
RWCS Convention  
badge and get

**1/2 OFF**

Any ice cream  
item:  
cone, bowl,  
or float.  
Excluding shakes and malts.



Downtown Shoppe  
317 Bush St. • 388-7178  
[www.hallstromsflowers.com](http://www.hallstromsflowers.com)

MIDWINTER: February 9-11, 2012

CONVENTION: July 12-14, 2012

# Canadian collector plans first trip to Convention

By Ruth Nerhaugen  
Contributor

Reading the newsletter and watching videotapes from past Red Wing Collectors Society conventions has been great, but Kelly Wilson from Winnipeg, Canada, has had enough of participating vicariously.

This year he and his wife, Mary, will be among collectors traveling to Red Wing to attend auctions and sales, sit in on educational seminars and share stories about their mutual passion.

Wilson specializes in Red Wing advertising pieces made for the Canadian market, but like many other collectors, he started out picking up pieces representing the broader scope.

"I have been a collector of advertising signs for 20 years," he said. When he and his wife moved into a new house about five years ago, "there was an open space in the kitchen, approximately 3 feet tall" on top of the cupboards.

He had a few Medalta crocks, Wilson said, "but I was attracted to the colors and decorations of Red Wing. I don't remember what was the first crock I put up on the shelf, but it didn't take long to start looking for more.

"It probably started with a 2-gallon, then a 3 and a 5," and on through the sizes of crocks decorated with birch leaves and red wings.

"Next thing you know the shelf is full; then they started going into the basement." Only about 10 of his pieces are salt glaze.

He learned about the Red Wing Collectors Society while doing Internet research, and joined about five years ago.

"I enjoy the newsletters – especially the stories on the history of the advertising pieces," and the society's website, Wilson said. "I found it really helpful watching the videos of other collectors" who have offered seminars at convention. DVDs of those presentations are available free to members.

"Often it's difficult to get information from local collectors, since we are both after the same things," he pointed out.

The videos featuring longtime collectors are quite informative, Wilson said, "Where else could you get experts explaining their expertise in 45 minutes to an hour?"

Wilson soon realized he had to specialize. "I had picked up a couple of Canadian advertising pieces over the years," he said. When he bought a copy of an old Red Wing Potteries sales ledger, he discovered that Red Wing made advertising pieces



Kelly Wilson

for many different towns and cities in Manitoba.

"The hunt was on!" he said. "I have approximately a dozen pieces of Canadian advertising," and he is writing an article for the fall RWCS newsletter on Winnipeg advertising. Some of Wilson's jugs will be on display at the convention.

Until recently he didn't have a lot of competition for Canadian advertising pieces outside of the province, he told the Winnipeg Free Press when that newspaper did a feature article on his collection in March.

"Americans were never particularly interested in stuff from north of the border," he said, "but because they're running out of things to buy at home, they're starting to set their sights further afield."

Wilson is looking forward to seeing a wide selection of Red Wing during the convention, especially at the annual members auction, plus he anticipates meeting lots of collectors – including people he's gotten to know online.

"I like the history of Red Wing," he said. "It is amazing that so many people collect Red Wing. I am still amazed that some people will pay more than \$10,000 to \$50,000 for a crock. It's just a piece of clay."

Prices in Canada appear to be more reasonable, Wilson said. "I haven't seen a crock go for more than \$300 at auction up in Manitoba."

Aside from the price difference, he

Those factors, and the cost of making the trip, are the big reasons he hasn't come to a convention before now.

When he's not looking for "neat old things" and Red Wing, Wilson works for New Flyer in Winnipeg. It's the largest transit bus manufacturer in North America, with plants in St. Cloud and Crookston, Minn., in addition to the Winnipeg headquarters.

Wilson is a volunteer executive member of the Manitoba Antique Association, a role that includes running two shows a year. He also has organized bus trips to St. Paul to attend an antique show at the State Fairgrounds.

He has his best luck finding collectibles at country auctions, online, and occasionally at garage sales, plus he sells antiques online.

"The thrill of the hunt is a big part of this hobby," he told the Winnipeg newspaper.

"Every once in a while I'll be at a garage sale, and spot one in somebody's back yard, being used as a planter. I'll be like, 'So. . . How much do you want for that?'"

knows it's unlikely he will find any Canadian advertising pieces in Red Wing.

## Country Side Antique Mall



*"Where the Collectors Shop!"*

**OPEN SPECIAL  
CONVENTION HOURS  
JULY 6-10.**

**Wed., 8-8; Thurs., 8-8;  
Fri., 8-8; Sat., 8-8;  
Sun., 8-5:30**

Only 20 miles west of Red Wing.  
Take Hwy. 19 to Cannon Falls,  
at stoplight go south one mile.

**Best overall  
inventory in 20  
years PLUS over  
4,000 Red Wing  
items. Over 55  
Dealers!**



**31752 65th Ave., Cannon Falls, MN. 507-263-0352**

**Thank you to our many RWCS volunteers who make the Convention successful every year:**



First Name	City, State	Department	# of years	First Name	City, State	Department	# of years
Nancy Houghton	Red Wing, MN	Auction	28	Sherie Rehm	Waterloo, WI	KidsView	10
Richard Houghton	Red Wing, MN	Auction	28	Aarika Floyd	Yorkville, IL	KidsView	9
Todd Houghton	Red Wing, MN	Auction	24	Kate Koester	Bloomington, MN	KidsView	9
Al Kohlman	Madison, WI	Auction	22	Michelle Heiberger	Dell Rapids, SD	KidsView	7
Jolene McKoon	Moline, IL	Auction	10	Krista Bell	Cannon Falls, MN	KidsView	7
Bonnie Myers	Winona, MN	Auction	8	Al Kohlman	Madison, WI	KidsView	7
Nick Marson	Winona, MN	Auction	8	Amber Orcut	Mazeppa, MN	KidsView	5
Luke Wegner	Red Wing, MN	Auction	6	Ariel Orcutt	Mazeppa, MN	KidsView	5
Bruce Selfridge	Headsburg, CA	Auction	5	Leslie Zamzow	Superior, WI	KidsView	5
Dennis Caylor	Genoa, IL	Auction	5	Mitchell Harned	Park City, UT	KidsView	3
Syl Caspersen	Sioux Falls, SD	Auction	4	Ari William	Rio, WI	KidsView	3
Todd Avery	Red Wing, MN	Auction	4	Sierra Kohlman	Wauwaukee, WI	KidsView	3
Chuck French	Chafffield, MN	Auction	3	Alex Johnson	Delano, MN	KidsView	3
Heidi Hahlen	Middleton, WI	Auction	3	Maren Koester	Bloomington, MN	KidsView	2
Nora Avery	Red Wing, MN	Auction	3	Hannah Paxton	Cambridge, WI	KidsView	2
Jacob Becker	Hagar City, WI	Auction	3	Barney Olson	Galesburg, IL	Young Collectors Club	27
Mike Becker	Hagar City, WI	Auction	3	Ann Busse Tucker	Sycamore, IL	Young Collectors Club	20
Jessica Anderson	Red Wing, MN	Auction	3	Wendy Callicoat	Seneca, MO	Young Collectors Club	16
Sara Falls	Red Wing, MN	Auction	3	Brenda Schwab	Web City, MO	Young Collectors Club	14
Jonathon Braasch	Rochester, MN	Auction	3	Barb Brown	Manitowac, WI	Young Collectors Club	11
Jeff Tagliapietra	Madison, WI	Auction	3	Steve Brown	Manitowac, WI	Young Collectors Club	11
Jim Wolff	MHenry, IL	Auction	3	Carmen Selfridge	Headsburg, CA	Young Collectors Club	5
Amy Anderson	Red Wing, MN	Auction	3	Jerry Mounts	Kansas City MO	Young Collectors Club	1
Joann Anderson	Red Wing, MN	Auction	3	Kris Mounts	Kansas City MO	Young Collectors Club	1
Karen Walters	St. Paul MN	Auction	2	Nancy Lambert	Baldwin City, KS	Young Collectors Club	1
Gary Richardson	Elbert, CO	Auction	2	Linda Birks	Harrisonville, MO	Young Collectors Club	1
John Dougherty	Zumbro Falls, MN	Auction	2	Connie Kolberg	Cannon Falls, MN	Young Collectors Club	1
Maxine Paxton	Waterloo, WI	Auction	2	Greta Hoerman	Wauconda, IL	Pre Registration	26
Bill Paxton	Waterloo, WI	Auction	2	Chuck Hanson	Rochester, MN	Pre Registration	24
Robert Ustaszewski	Marquette, WI	Auction	2	Donna Hanson	Rochester, MN	Pre Registration	24
Steve Poeschall	Alden, MN	Auction	2	Mark Anway	Red Wing, MN	Pre Registration	22
Bob Beres	Merrimac, WI	Auction	2	Karen Key	Red Wing, MN	Pre Registration	18
Paul Wichert	Waukesha, WI	Commemorative	23	Jim Key	Red Wing, MN	Pre Registration	18
Darrel Morrissey	Moose Lake, MN	Commemorative	23	Diane Quist	Oseo, WI	Pre Registration	11
Joanne Morrissey	Moose Lake, MN	Commemorative	23	Kim Key	Red Wing, MN	Pre Registration	10
Wally Armstrong	Monroe, WA	Commemorative	23	Dennis Stoeckman	Olivia, MN	Pre Registration	10
Greta Hoerman	Wauconda, IL	Commemorative	23	Karen Stoeckman	Olivia, MN	Pre Registration	10
Janice Broshous	Stockton, IL	Commemorative	22	Marian Fitschen	Red Wing, MN	Pre Registration	9
Larry Roschen	Coon Rapids MN	Commemorative	21	Jo Buck	Goodhue, MN	Pre Registration	9
Kathy Roschen	Coon Rapids MN	Commemorative	21	Joyce Sutherland	Red Wing, MN	Pre Registration	8
Linda Krueger	Glencoe, MN	Commemorative	19	Jim Sutherland	Red Wing, MN	Pre Registration	8
Deanna Juergens	Bloomington, MN	Commemorative	19	Janet Peterson	Duluth, MN	Pre Registration	6
Jay Juergens	Bloomington, MN	Commemorative	19	Ralph Ryan	Red Wing, MN	pre Registration	5
Tom Dvorscek	Prior Lake, MN	Commemorative	19	Margaret Ekdahl	Red Wing, MN	pre Registration	4
Darlene Tomhave	Red Wing, MN	Commemorative	19	Ave Zibble	Red Wing, MN	Pre Registration	4
Jack Tomhave	Red Wing, MN	Commemorative	19	Whit Smith	Plainfield, IN	Pre Registration	2
Eleanor Roschen-Stroot	Lake City, MN	Commemorative	19	Helen Smith	Plainfield, IN	Pre Registration	2
Janice Nelson	Red Wing, MN	Commemorative	19	Bob Zibble	Red Wing, MN	Pre Registration	1
Mary Plant	Fridley, MN	Commemorative	19	Sue Ingwersen	Indianapolis, IN	Registration	9
Frank Plant	Fridley, MN	Commemorative	19	Leona Scherer	Schroeder, MN	Registration	5
Jane Wolfram	Rushford, MN	Commemorative	19	Scott Woltering	Champlin, MN	Registration	5
Mary Wolfram	Red Wing, MN	Commemorative	18	Connie Kolberg	Cannon Falls, MN	Registration	4
Gordon Trelstad	Red Wing, MN	Commemorative	17	Denise Salm	Iowa City, IA	Registration	4
Ronald Broshous	Stockton, IL	Commemorative	16	Ron Schumacher	Elko, MN	Registration	2
Brenda Ehlers	Red Wing, MN	Commemorative	15	Shiela Schumacher	Elko, MN	Registration	2
John Tremble	Hudson, WI	Commemorative	13	Bobbie Werning	Waukesha, WI	Registration	2
Bonnie Myers	Winona, MN	Commemorative	9	Katie Hardyman	Red Wing, MN	Registration	1
Nick Marson	Winona, MN	Commemorative	9	Pete May	Greenville, TN	Show & Sale	13
Diana Bailey	Cederburg, WI	Commemorative	9	Cindy May	Greenville, TN	Show & Sale	13
Ginger Garry	Woodbury, MN	Commemorative	8	Dave Hallstrom	Red Wing, MN	Show & Sale	13
Syl Caspersen	Sioux Falls, SD	Commemorative	7	Jeff Tagliapietra	Madison, WI	Show & Sale	13
Bob Morawski	New Berlin, WI	Commemorative	6	Jerry Erdmann	Tigerton, WI	Show & Sale	13
Hailey Morawski	New Berlin, WI	Commemorative	4	Jane Erdmann	Tigerton, WI	Show & Sale	13
Tom Scherer	Schroeder, MN	Commemorative	4	Kay Salisbury	Melvern, KS	Show & Sale	13
Dick Werning	Waukscha, WI	Commemorative	2	Larry Salisbury	Melvern, KS	Show & Sale	13
Gary Grabau	Lynd, MN	Commemorative	2	Lynn Huppert	Red Wing, MN	Show & Sale	13
Wayne Johnson	Eden Prairie, MN	Commemorative		Jeff Huppert	Red Wing, MN	Show & Sale	13
Glenn Beall	Logan, IA	Display	10	Barb Gernentz	Red Wing, MN	Show & Sale	13
Laura Beall	Logan, IA	Display	10	Ron Gernentz	Red Wing, MN	Show & Sale	13
Julie Beall	Logan, IA	Display	10	Mark Russell	Melvern, KS	Show & Sale	10
Catherine Beall	Logan, IA	Display	9	Linda Russell	Melvern, KS	Show & Sale	10
Ruth Beall	Sioux City, IA	Display	8	Dennis Hostetler	Wakefield, KS	Show & Sale	9
Phyllis Showers	Welsh, MN	Education	34	Dixie Hostetler	Wakefield, KS	Show & Sale	9
Steve Showers	Welsh, MN	Education	34	Gary Wisbar	Stillwater, MN	Show & Sale	8
Dennis Nygaard	Hastings, MN	Education	26	Mary Wisbar	Stillwater, MN	Show & Sale	8
Paul Wichert	Waukesha, WI	Education	23	Fred Fitschen	Red Wing, MN	Show & Sale	5
Linda Krueger	Glencoe, MN	Education	19	Gloria Fitschen	Red Wing, MN	Show & Sale	5
Larry Roschen	Coon Rapids, MN	Education	19	Jeanne Weber	St. Joseph, MO	Show & Sale	5
Terry Moe	Cedar Rapids, IA	Education	12	Dennis Weber	St. Joseph, MO	Show & Sale	5
Catherine Beall	Logan, IA	Education	3	Luke Wegner	Red Wing, MN	Office Support	6
Tammi Sautar Hawley	Sioux Falls, SD	Education	3	Dan Barry	Red Wing, MN	Office Support	5
Bob Downs	Moumouth, IL	Education	2	Connie Kolberg	Cannon Falls, MN	Office Support	4
Brent Mischke	Defiance, MO	Education	1	Keith Klindworth	Red Wing, MN	Office Support	3
Ruth Nerhaugen	Red Wing, MN	Education	1	Debra Gullickson	Red Wing, MN	Office Support	3
Paul Boudin	Minneapolis, MN	Education	1	Ralph Ryan	Red Wing, MN	Office Support	3
Connie Mathison	Minneapolis, MN	Education	1	Char Ackerman	Midland, MN	Office Support	3
Russ Johnson	Delano, MN	KidsView	17	Bob Bremer	Red Wing, MN	Office Support	3
Paulette Floyd	Yorkville, IL	KidsView	17	Laura Beall	Logan, IA	Office Support	3
Sue Jones -Tagliapietra	Madison, WI	KidsView	15	Paul Wichert	Waukesha, WI	Office Support	2
Jeff Tagliapietra	Madison, WI	KidsView	13	Nancy Lambert	Baldwin, KS	Office Support	2
Kay Salisbury	Melvern, KS	KidsView	13	Mary Ouret	Red Wing, MN	Office Support	1
Sue Johnson	Delano, MN	KidsView	13	David Nelson	Stoughton, WI	Picnic	1
Vivien Perry	Lees Summit, MO	KidsView	12	Heidi Hahlen	Middleton, WI	Picnic	3
Beth Zamzow	Superior, WI	KidsView	12	Brent Nottingham	Onalaska, WI	Picnic	2
Dick Houghton	Red Wing, MN	KidsView	10	Linda Nottingham	Onalaska, WI	Picnic	2
Heather Robinson-Tanaka	Stockton, CA	KidsView	10	Anne Nelson	Stoughton, WI	Picnic	2
Mike Robinson	Stockton, CA	KidsView	10	Bruce Nett	Stoughton, WI	Picnic	2
Russa Robinson	Stockton, CA	KidsView	10	Joyce Nett	Stoughton, WI	Picnic	2
Barb Williams	Alexandria, MN	KidsView	10	Judy Richardson	Eau Claire, WI	Picnic	2
Jolene McKoon	Moline, IL	KidsView	10				

**Thank you to the Red Wing businesses for your sponsorships and donations**

**Crock Hunt Sponsors**  
**Randy Restaurant**  
**Subhouse**  
**Red Wing Arts Association**  
**Whimsy's Closet**  
**Kwik Trip**  
**Life's Little Oasis**  
**St. James Hotel**  
**Liberty's Restaurant and Lounge**  
**Pete's Kitchen Corner**

**Bed Bath Treasurers**  
**Red Wing Trolley Company**  
**Brickhouse Bar and Grill**  
**Marie's Underground Grill & Tap House**  
**Moments On Main**  
**Meathead's Meat & Deli**  
**Goodhue County Historical Society**

**Red Wing Business Supporters**  
**Best of Times Bookstore & Coffee**  
**Vogel & Gorman PLC**  
**Wiederholt's Supper Club**  
**Third Floor Antiques**  
**Ferrin Furniture Co**  
**Refined Skin Medi- Spa**  
**King Neptune Car Wash**  
**Treasure Island Resort & Casino**  
**Walt Shoe Service**  
**Christian Book Store**  
**Studiwheat**  
**Salvation Army**  
**White Rock Bank**  
**Culvers**  
**Bev's Café**  
**Liquor King**  
**Hanish Bakery**  
**Larry's Jugs**  
**Red Wing Corner Drug**  
**McDonald's of Red Wing**  
**Roadway Inn**  
**St. James Merchants Association**  
**West End Liquor**  
**Red Wing Visitors and Convention Bureau**  
**Claydon's Hallmark**  
**Inspired Home & Flower Studio**  
**Red Wing Pottery**

**Red Wing Stoneware**  
**Provenzano's Ristorante**  
**Al's Antiques**  
**Falconer Vineyard**  
**Hill Street Antiques**  
**Josephon's Clothing**  
**Hallstroms Florist**  
**First State Bank RedWing**  
**Uffda Shop**  
**Retro Specs**  
**Best Western Rivertown Inn and Suites**  
**Red Wing Shoe**  
**Cut Above Home**  
**Essential Chiropractic**  
**Perkins Restaurant & Bakery**  
**Simple Abundance**  
**Sargent's Nursery**  
**Red Wing Golf Club**  
**Red Wing Confectionary**  
**Tittle Real Estate**  
**Mary Ouret**  
**Corner Medical**  
**Pottery Place Antiques**  
**AmericInn**  
**B Wireless**  
**Nichols Inn**

**2010 Convention Attendance 1,506**  
**Red Wing Collectors By State:**

<b>Alabama-2</b>	<b>Indiana-15</b>	<b>Oklahoma-2</b>
<b>Arkansas-4</b>	<b>Kansas-25</b>	<b>Pennsylvania-8</b>
<b>Arizona-6</b>	<b>Maryland-2</b>	<b>South Dakota-38</b>
<b>California-31</b>	<b>Michigan-13</b>	<b>Tennessee-2</b>
<b>Colorado-4</b>	<b>Minnesota-768</b>	<b>Texas-6</b>
<b>Connecticut-1</b>	<b>Missouri-27</b>	<b>Utah-4</b>
<b>Florida-3</b>	<b>Montana-6</b>	<b>Washington-6</b>
<b>Iowa-126</b>	<b>North Dakota-24</b>	<b>Wisconsin-287</b>
<b>Idaho-4</b>	<b>Nebraska-22</b>	<b>Manitoba, Canada-2</b>
<b>Illinois-65</b>	<b>Ohio-5</b>	



# Convention videos available to everyone

By Ruth Nerhaugen  
Contributor

You don't have to be a collector. Curiosity about Red Wing pottery and stoneware is reason enough to tap into the Red Wing Collectors Society's Video Lending Library.

Since 1992, the Society has been taping all the education sessions plus lots of the special features, including keynote banquet speakers and some Kids View sessions.

Those tapes – in both VCR videotape and DVD format – are available at no charge to all collectors society members.

In addition, RWCS Executive Director Stacy Wegner said, they also are available to any group or organization that would like to borrow a video or secure a speaker for a program on Red Wing pottery. Students doing history projects or research papers also can borrow copies.

"The lending library is a great resource," Wegner said. "There's a lot of information in there, and a lot of it is first-hand."

For example, she said, there's a tape of Eva Ziesel, designer of the Town & Country dinnerware line, when she did a presentation at convention in 2000; and

another of Ron Linde telling about his Arizona interview with Charles Murphy, who was chief designer for many years.

Borrowers also can see the educational presentations by local collectors talking about their areas of expertise, such as Terry Moe and Larry Roschen on dinnerware, Bob Bremer and Dave Hallstrom on memorabilia, stoneware dump finds by Steve Showers and Dennis Nygaard, and many more.

An education session "is not simply show-and-tell," Wegner stressed. "These members did their homework, researching the history of the item, and how it was used. This is information collectors want to know."

Many specialty interests have been topics for education sessions, she added, from spittoons and cuspidors to lids, art pottery animals, all the different stoneware lines, cookie jars, advertising jugs, lamps and others.

Collectors also may be interested in such topics as identifying Red Wing, understanding basic terminology, insuring a collection, repairing items, buying on E-Bay and spotting fakes.

Anyone who missed a keynote presentation can catch up on stories told by the likes of Dave Short, salt glaze expert; Steve and Rose Splittgerber on the Schleich collection; author Ray Reiss on art pottery; Dustin Winterowd on the historic kiln; Red Wing official Brian Peterson on Pottery Park; author Cathy Wurzer on her "Tales of the Road" book; and Jerry Mewhorter on his years as plant manager.

Older sessions, from 1992 to 2006, are mostly on VHS tapes, Wegner said; anything from 2007 to date are on DVD. "We will convert to DVD" at no charge, she added, as items are requested.

Most sessions ran about 50 minutes, including question-answer time. Some years are captured on five or more tapes, said Wegner, who maintains a list of all the library's holdings.

"This is how some people attend the convention," she said. One RWCS member from Colorado who cannot attend this year's gathering already has requested all the DVDs as soon as they're available. Another member from Canada "attends" that way every year.

Wegner is available as a speaker and pre-



sender to any groups interested in a program on the collectors society, its history and working with the Red Wing Collectors Society Foundation.

"I can find speakers for groups" that want to focus on particular topics, she said. Membership is not required, although she will encourage people to join. Cost for a single member is \$25 a year, including the society's newsletter.

Wegner is available at 651-388-4004, 800-977-7927 or swegner@redwingcollectors.org.

## Learning to use social media

Stacy Wegner, Red Wing Collectors Society's executive director, will teach an education session on social at this year's Convention.

The 50-minute class, titled "What Is Facebook, Twitter and You Tube," will be at 11 a.m. and again at 12:30 p.m. Friday, July 8, at Red Wing High School.

"We recognize that a lot of our members are of the generation that may not necessarily understand Facebook, and may be concerned about privacy and other issues," Wegner said.

However, she added, "If you take the time to learn about account settings, you can protect yourself."

The session is for anyone with questions or concerns, she said, or people who simply don't know what it means to find or friend someone on Facebook, follow the Society on Twitter or check out a You Tube video.

Wegner, who will conduct the hands-on session in the high school computer lab, has been active on Facebook for two years and on Twitter for about a year. She manages the Society's presence on the social media.

## Educational DVD available

A DVD recording of a 2008 education session on "The Red Wing Pottery District, Then and Now" is available from the Red Wing Collectors Society's Video Lending Library.

The session was presented by Leanne Knott, Geographic Information Systems specialist for the city of Red Wing. The GIS department works with the Goodhue County Land Survey/GIS Department to provide land base information through mapping.

Videos and DVDs of past education sessions may be borrowed at no charge by RWCS members. Contact Stacy Wegner, executive director, at 651-388-4004, 800-977-7927 or swegner@redwingcollectors.org.

**Videos and DVDs of educational seminars at past conventions are maintained by Red Wing Collectors Society Executive Director Stacy Wegner. All members are welcome to borrow them at no charge.**

# Falconer Vineyards Winery



Welcomes the  
**Red Wing  
Collectors Society**

Enjoy our award winning  
wines as well as our new  
kiln-fired pizzas!  
Try our signature pizza -  
*The Grapes of Wrath*

**Collectors' Week Hours**  
Thursday 12 pm - 6 pm  
Friday 12 pm - 9 pm  
Saturday 10 am - 9 pm  
Sunday 12 pm - 6 pm  
(651)388.8849

Wine tastings \$5.00 per person  
Falconer Vineyards Winery  
3572 Old Tyler Rd, Red Wing, MN 55066  
(651)388-8849 winery@falconervineyards.com  
www.FalconerVineyards.com



# EDUCATION DAY - Friday, July 8th

**Keynote: Ronald C. Schirmer, Ph.D**

**Title: The Ancient Art of Red Wing Pottery**  
**Thursday: July 7, 10:30 a.m.**

**Session: Description:**

People living in Red Wing have been producing distinctive pottery for more than 1,000 years – a claim few cities in the United States can make. However, unlike the historical wares, comparatively few people study the prehistoric types. In this heavily illustrated presentation, I will describe the ancient pottery of Red Wing – its construction methods, decorations, and the roles it played in their cultures.

**Speaker Bio:**

I am an Associate Professor of Anthropology at MSU, Mankato, and one of two recognized experts in the archeology of the Red Wing area. I earned my Ph.D. in 2002 and have been conducting archeological research in the area for more than a decade. I am also involved in collaborations with the regional Native American communities to improve archeological interpretations by using oral traditions, and I assist regional conservation organizations in site preservation efforts.

**Session: Title: Salt Glaze Production**

**Speaker Name: Bob Downs, Maple City Pottery**

**Session: 3: 12:30 p.m. to 1:20 p.m.**

**Session: 4: 1:30 p.m. to 2:20 p.m.**

**Session: Description:**

Bob Downs from Maple City Pottery will share the salt glazing process from start to finish. He will show samples of salt glazing from a perfect piece to all the “seconds”. In addition, he will give information on kiln pieces and how the salt glaze application works. Come hear an expert and ask all those burning questions about salt glaze.

**Speaker Bio:**

Bob Downs founded Maple City Pottery in 1987. The pottery is located in Monmouth, IL. Bob and his artisans learned their trade, perfected their art, from some of the county's recognized potteries and, by his own admission, through pure trial and error. “My elements have always been fire, water, earth, and air.”

**Session: Title: RW Stoneware Dump Finds**

**Speaker Name: Paul Boudin & Connie Mathison**

**Session: 1 10:00 a.m. to 10:50 a.m.**

**Session: 2 11:00 a.m. to 11:50 a.m.**

**Session: Description:**

Paul Boudin and Connie Mathison have been digging in the dump for 5 years. Paul and Connie will share their experience and finds in the dump. Come and see the newest Dump Digging members. This will be their first time speaking at an RWCS event, please come and welcome them.

**Speaker Biography:**

Paul Boudin started collecting Red Wing in 2000 since then he has acquired a very nice collection of advertising crocks and jugs and salt glaze dump finds. He attended his first Convention in 2007 and met Steve Showers who started his digging interested. Since that first convention Paul has attended every auction and stopped at every antique mall in town. If Paul is not there, you can find him in the dump.

Connie Mathison also attended my First Convention in 2007 went to Steve Showers seminar and he met us to go digging in the dump at a later time. My collection consists of a lot of different items. But my main collection is of over 400 shoulder bowls.

**Session: Title: What is Facebook, Twitter, and You Tube?**

**Speaker Name: Stacy Wegner**

**Session: 2 11:00 a.m. to 11:50 a.m.**

**Session: 3: 12:30 p.m. to 1:20 p.m.**

**Session: Description:**

Have you been asked: find or friend me on Facebook? Follow us on Twitter? Check out a You Tube Video? But, you are having questions, concerns, or just don't know what it all mean, attend this session. This hands-on session in the computer lab presented by Stacy Wegner, RWCS Executive Director will be a 101 to these “social media” sites and a great place to get your questions answered. Come Find the RWCS!

**Speaker Biography:**

Stacy Wegner has been active on Facebook for 2 years and Twitter for about one year. As executive director, she manages the RWCS Social media presence. She has been director of the RWCS, since her first MidWinter in 2006. Stacy, her husband Luke, and daughter Flora are collectors of all kinds of Red Wing that finds its way to their door step. Currently, Stacy is actively collecting Smart Set dinnerware.

**Session: Title: Recollections of Working at the Potteries**

**Speakers: Hannes Kuehn**

**Session: 1 10:00 a.m. to 10:50 a.m.**

**Session: 2 11:00 a.m. to 11:50 a.m.**

**Session: Description:**

Hannes Kuehn will share a narrative recollection of working at Red Wing Pottery from 1956 to 1957. He was a Modeler/Designer who worked closely with Charles Murphy and Ted Hutchison. Come and hear his stories and learn more about working at the Potteries in the 1950s.

**Speaker Biographies:**

Hannes Kuehn began his modeler/designer career as an apprentice at Ulmer Keramik in Germany in 1954. In 1956 Hannes immigrated to the US and began working at Red Wing Potteries. Following his stint at the Potteries, Hannes had other ceramic's position until he became a Dental Technician owning his own lab from 1958 to 1988. In 1988

he became the Manager/Director and Instructor at the UCLA Dental School until 1999. Hannes currently lives in Southern California

**Session Title: What is new with the RWCS Foundation and the Red Wing Pottery Museum**

**Speakers: RWCS Foundation Board Members**

**Session: 1 10:00 a.m. to 10:50 a.m.**

**Session: 2 11:00 a.m. to 11:50 a.m.**

**Session Description:**

The RWCS Foundation Board Members will discuss the new projects, acquisitions and up coming events. Rather than listen to rumors or guesses, come get the whole story and answers to anything and everything you've ever wanted to know.

**Session Biography:**

The main purpose of the Foundation is to preserve Red Wing and other American stoneware and pottery for future generations. The displays are a historical reflection of what has happened in Minnesota and the United States during the past century. The museum's purpose is to encourage collecting in those who may not know about the RWCS, as well as to educate those who stop to visit.

**Session: Red Wing Dinnerware Paper Products & Advertising Part 2**

**Speakers: Terry Moe and Larry Roschen**

**Session: 1 10:00 a.m. to 10:50 a.m.**

**Session: Description:**

Terry Moe and Larry Roschen will present a seminar that will provide insights into Red Wing Dinnerware Paper items. Part 1 was presented at the 2010 RWCS Convention. This seminar does not repeat items from last summer. It does contain most of the items from the 2011 Midwinter seminar with a few new additions. Red Wing Dinnerware paper items included such varied items as product brochures, price lists,

## NEW: Young Collectors Program

## Kids View – Stirring up the Memories July 7-9, 2011

Thursday, July 7th	
Time	Activity
10:00	<b>Young Collectors Meet and Greet</b> Meet up with your old friends and find out who is new!
10:15 to 11:45	<b>Pottery Place Road Trip</b> <b>Students - Bring Your Spending Money!</b> <ul style="list-style-type: none"> <li>Students will visit with booth vendors and learn about different pieces of Red Wing including: pricing, condition and availability.</li> <li>You will have the opportunity to shop and purchase a piece to add to their collection from the “special booth”</li> <li>Students will be encouraged to volunteer at Kids View Seminars and in other Convention areas!</li> </ul>
Friday, July 8	
Time	Activity
10:00 to 12:00	<b>Education - Back corner of Cafeteria</b> <ul style="list-style-type: none"> <li>Using the Internet to learn more about Red Wing!</li> <li>Bring your Computer and experience online resources and EBAY.</li> <li>Red Wing Dinnerware - starting a collection</li> <li>Red Wing 101 - city and pottery fun facts</li> </ul> <b>Making Mosaics - Home Economics Rm K102</b> Carmen Selfridge, RWCS Foundation Board Member, will help students to make their own mosaic with pieces of Red Wing - Come Join the Fun!

Thursday, July 7th		
8:00 to 12:00	<b>Auction Check In - Art Room</b>	
12:00	<b>Volunteer Training - Art Room</b>	
12:30	<b>Registration and Introduction</b>	
Time	Group 1 **	Group 2 **
1:00 to 1:30	<b>Make Your Own Stoneware</b> Mike Robinson will assist kids as they stamp and glaze a specially designed version of miniature stoneware. (The piece will be fired and picked up on Friday) <b>Art Room*</b>	<b>Building &amp; Adding To A Collection</b> Children are encouraged to bring actual examples of their Red Wing collections, pictures or photographs of what they collect or would like to collect. They will learn how to find more pieces for their collection. <b>Auditorium*</b>
1:30 to 2:00 ***	<b>Building &amp; Adding To A Collection</b> Children are encouraged to bring actual examples of their Red Wing collections, pictures or photographs of what they collect or would like to collect. They will learn how to find more pieces for their collection. <b>Auditorium*</b>	<b>Make Your Own Stoneware</b> Mike Robinson will assist kids as they stamp and glaze a specially designed version of miniature stoneware. (The piece will be fired and picked up on Friday) <b>Art Room*</b>
2:15 to 3:00 ***	<b>Kids View Collection Estate Auction</b> To build or add to your collectin, Dick Houghton will conduct the kids auction. A sealed envelope gives \$ to bid to secure your favorite piece. It's time to practice all that you have learned and a chance at winning a special piece.	

Friday, July 8th	
Time	All Participants
9:45	<b>Registration</b> (Lunch is provided. Please note any food allergies)
10:00 to 2:20	<b>Creating Lasting Memories</b> <ul style="list-style-type: none"> <li>Paint on an authentic Red Wing plate</li> <li>“Ask the Expert” Al Kohlman will answer all of your burning questions and talk about what Utilitarian means</li> <li>Turn, turn, turn on the pottery wheel with Kevin and Paul from Ephraim Pottery</li> <li>Trying out your skills at making things in stoneware vessels</li> <li>Our very own Amazing Race</li> <li>Field trip to Display Room Many other fun filled activities that will creat lasting memories for everyone.</li> </ul>
<p>*All children meet in the Art Room. **Children will be divided into groups based on age. ***Starting times may vary. <b>PARENTS:</b> Your child will be expected to stay in the Art Room or Auditorium for the duration of the activity UNLESS you have given express permission that your child may leave independently.</p>	

Turn to page 17 to learn more about this program.

# EDUCATION DAY - Friday, July 8th

magazine ads, trade journal articles and ads, internal company documents, letters to customers and many others. We have far too many to show them all during this session but attendees will see a representative sample. Actual items will be available for viewing. We will also be available after the seminar to answer dinnerware questions. If you have any dinnerware paper items to share, please bring them to the seminar.

## Session: Red Wing's Casual dinnerware line

Speakers: Terry Moe and Larry Roschen

Session: 2 11:00 a.m. to 11:50 a.m.

Session: 3: 12:30 p.m. to 1:20 p.m.

### Session: Description:

Terry Moe and Larry Roschen will present an overview of the Casual dinnerware line in a slide show format. Patterns in the Casual line include Smart Set, Chuck Wagon, Round Up, Hamm's, Tip Toe, Hearthside and of course Bob White. Recently uncovered information about the elusive Chuck Wagon pattern will be presented, as well as photos of hard to find items from the Casual patterns.

### Speaker Biographies:

Larry Roschen and his wife Kathy have collected all forms of Red Wing pottery since 1980. Red Wing pitchers, teapots, salt & pepper shakers are primary collecting interests along with building complete sets of several dinnerware patterns. Larry's interests have slowly turned from growing the collection to learning more about the Red Wing dinnerware lines through research of vintage documents. Larry currently serves as the dinnerware advisor for the "Ask the Experts" section of the RWCS website and serves on the board of the Red Wing Collectors Society Foundation.

Terry Moe and his wife Marilyn have been collecting Red Wing pottery since they inherited a partial set of Gypsy Trail Plain and Reed in 1975 from Terry's Grandmother. They primarily collect dinnerware. Gypsy Trail, Wreath, Ardennes, and Normandy along with Merrileaf are the main focus. They also collect supper trays. Primary source materials

relating to dinnerware are also a major interest.

Larry and Terry have conducted numerous dinnerware seminars for RWCS Midwinter and Summer Conventions.

## Session Title: Red Wing Trivia 101

Speakers: Paul Wichert and Linda Krueger

Session: 2 10:00 a.m. to 10:50 a.m.

### Session Description:

Red Wing Trivia 101 is an interactive 'Trivia' session. RED WING TRIVIA 101 is geared toward the new collector, seasoned collectors, and trivia junkies. This light-hearted seminar addresses the history of the Red Wing potteries, their vast array of products, trends, and condition. Get some pointers on what to look for before you buy. We'll touch on ovals, signatures, shape numbers, reuse of the molds, as well as various glazes, colors, and color combinations. A seminar highlight is a 'fun' exam handed out at the beginning of each presentation. Come join us and see if you can 'ace' the test.

## Session Title: Red Wing Trivia 102

Speakers: Paul Wichert and Linda Krueger

Session: 2 11:00 a.m. to 11:50 a.m.

### Session Description:

Red Wing Trivia 102 is an interactive 'Trivia' session. RED WING TRIVIA 102 is geared toward the new collector, seasoned collectors, and trivia junkies. This light-hearted seminar continues the exploration of the Potteries' history, products, trends, and much more. A seminar highlight is a 'fun' exam handed out at the beginning of each presentation. Come join us and see if you can 'ace' the test.

## Session Title: Dinnerware Concentration

Speakers: Paul Wichert and Linda Krueger

Session: 3 12:30 p.m. to 1:20 p.m.

### Session Description:

Dinnerware Concentration is a brand new computerized

seminar styled after the old TV game show Concentration. Come help us solve the 50 plus puzzles. Don't worry; you won't need to know the names of the dinnerware patterns - if you can solve the puzzles. This light-hearted seminar will familiarize you with most of the Red Wing dinnerware patterns. This definitely isn't serious, but it'll be fun. Come join us. Need the answers to the RWCS 2011 crossword puzzle. We'll distribute them before this seminar.

### Speaker Biographies:

Paul Wichert: An Information Technology professional by trade, a RWCS member since 1992, Paul Wichert has served continuously on the commemorative distribution crew since 1993. He also resides on the membership committee, and provides some technical/analytical support to the society. An antique dealer, he participated as an appraiser for a number of events including PBS appraisal fairs and the Keno Brothers Antique Expo.

Linda Krueger: By profession, Linda Krueger is a self employed Interior Decorator. A long time antique dealer, she collects stoneware and art pottery. A native of Sleepy Eye, MN, Linda actively collects Sleepy Eye items. An active member of the Red Wing Collector Society since 1989, Linda has served on the commemorative distribution crew since 1993. She is a member of the Gopher Chapter and was their commemorative chair person.

## Session: Title: New Brighton, PA pottery

Speakers: Dennis Nygaard

Session: 3: 12:30 p.m. to 1:20 p.m.

Session: 4: 1:30 p.m. to 2:20 p.m.

### Session: Description:

Dennis is going to cover the miniatures and stoneware bottles made by New Brighton Pottery of Pennsylvania. New Brighton Pottery was a major competition to Red Wing and the two companies often sold in the same territories included Red Wing, MN. Dennis has been an active collector and historian for this pottery for more than 15 years and has made three trips to learn more about the pottery. Come and

learn more about one of the biggest potteries on the east coast.

### Speaker Biographies:

Dennis Nygaard is a long time RWCS member who has not missed a Convention. He has been digging in the Red Wing dump for 30 years, often with fellow diggers Steve Showers and Austin Fjerestad. In addition to his dump finds, Dennis collects stoneware fruit jars from all United States potteries with a special interest in New Brighton, PA pottery. Dennis lives in Hastings, MN with his wife, Virginia, and has three sons.

## Session: Finding Red Wing through the Media

Speaker: Ruth Nerhaugen

Session: 1 10:00 a.m. to 10:50 a.m.

Session: 2 11:00 a.m. to 11:50 a.m.

### Session: Description:

Writing about Red Wing has always been one of Ruth Nerhaugen's favorite assignments - the community, its history and especially its stoneware industry. She will talk about covering the convention for the Republican Eagle newspaper and writing the annual supplement, and exchange stories about collecting Red Wing.

### Speaker Biography:

Ruth Nerhaugen, recently retired as a reporter at the Red Wing Republican Eagle newspaper, has attended nearly all the Red Wing conventions, but not always as a member. She covered the 1978 convention for the local newspaper, and had so much fun she continued to "volunteer" for the assignment, even after joining the Society herself.

Her stories about collectors and about Red Wing pottery and stoneware also have appeared in the convention supplement. Though retired, she wrote several features for this year's edition. Ruth and her husband Stan are RWCS members and live in Red Wing.

## Title: Orientation for First Timers

Speaker: Catherine Beall

Thursday: July 7, 9:00 a.m. to 10:00 a.m.

Friday: July 8, 9:00 a.m. to 10:00 a.m.

### Session: Description:

If 2010 will be your first time attending the Red Wing Collectors Society Convention, there is a lot to see and do! Start your first Convention experience out right by attending an Orientation Seminar led by longtime RWCS member Catherine Beall. Catherine will discuss all of the activities that are lined up and offer tips on making the most of your Convention experience. NEW THIS YEAR: a representative from the Red Wing Visitor and Convention Bureau will also stop in for both Sessions to tell you about all that Red Wing has to offer.

### Speaker Biography:

Hello! I am Catherine Beall. I am interested in Red Wing and have grown up with it, and have attended chapter meetings in Nebraska and South Dakota. Mr. Charles E. Murphy's prints are especially admirable, and collecting Art Pottery is my favorite past-time. As a younger member of the Red Wing Collectors Society, I participated in Kid's View Activities, but now volunteer along with Wendy Callicoat and Sue Jones-Tagliapietra. I have been a volunteer and a Displayer in the Convention Display Room. In Iowa High School Speech competitions for the past two years, I have earned excellent ratings for both Group and Individual contests. As a black belt in Tae Kwon Do, I have learned discipline and self defense.

## Red Wing Collector's Society - Educational Seminars • Friday, July 8, 2011

### ORIENTATION FOR FIRST TIMERS

Catherine Beall  
Choir Room C-100  
Thursday & Friday  
9:00 a.m.

### KEYNOTE

Dr. Ronald Schirmer

Associate Professor  
Department of  
Anthropology

Minnesota State  
University, Mankato

Hovda Auditorium  
Thursday, July 7  
10:30 a.m.

Primitive pottery styles  
and production in  
Minnesota and the  
surrounding areas

	H201	H202	H203	H204	H205	H206/207	H208	H209 Computer Lab
Session I 10:00 to 10:50	Red Wing Dump Finds  Paul Boudin Connie Mathison	Red Wing Dinnerware Paper Products & Advertising Part 2  Larry Roschen Terry Moe		Finding Red Wing through the Media  Ruth Nerhaugen	What's New with the RWCS Foundation & in Your Museum  Red Wing Foundation	Recollections of Working at the Pottery  Hannes Kuehn	Red Wing Trivia 101  Paul Wichert Linda Krueger	
Session II 11:00 to 11:50	Red Wing Dump Finds  Paul Boudin Connie Mathison	Red Wing's Casual Dinnerware Line  Larry Roschen Terry Moe		Finding Red Wing through the Media  Ruth Nerhaugen	What's New with the RWCS Foundation & in Your Museum  Red Wing Foundation	Recollections of Working at the Pottery  Hannes Kuehn	Red Wing Trivia 102  Paul Wichert Linda Krueger	What is Facebook, Twitter, You Tube?  Stacy Wegner
Session III 12:30 to 1:20	Saffronware  Brent Mischke	Red Wing's Casual Dinnerware Line  Larry Roschen Terry Moe		Salt Glaze Production  Bob Downs	Treasures from the Dump  Steve Showers	New Brighton, PA Pottery  Dennis Nygaard	Dinnerware Concentration  Paul Wichert	What is Facebook, Twitter, You Tube?  Stacy Wegner
Session IV 1:30 to 2:20	Saffronware  Brent Mischke			Salt Glaze Production  Bob Downs	Treasures from the Dump  Steve Showers	New Brighton, PA Pottery  Dennis Nygaard		

# Memories of the first RWCS Convention

By Karen Strusz  
Contributor

**M**y mother (Delores Callstrom) was in the antique business and had become interested in the Red Wing Pottery stoneware. She had



Nicole and Kari Strusz looking at the lunch hour pieces in the display case.

acquired some pieces and was very excited about showing them off. She called and told that she would be showing her collection at the Historical Museum and that I should come up and take a look. So I took my two daughters, then ages 7 and 9, to the Museum to see "Grandma's collection". They were concerned that Grandma would sell their favorite pigs and cows (lunch hour pieces). I thought I'd better buy the book by Lyndon Viel, or my mom would think I wasn't very interested in pottery! Luckily, I did buy it and he autographed it for me. Unfortunately, I guess I missed Jewell Peterson's table, because I did not purchase the first commemorative!!

The pictures are from that summer day in 1977 when I attended my first RWCS Convention on the grounds of the Goodhue County Historical Museum.



Delores Callstrom's display table. Karen (Callstrom) Strusz (sitting). Standing: Gladys Holst, Lyndon Viel, Morris Callstrom.

## We Invite You To Enjoy Our Authentic Homemade Specialties

- UNBEATABLE HOMEMADE MARGARITAS
- DAILY LUNCH & DINNER SPECIALS
- FULL SERVICE BAR W/ HAPPY HOUR SPECIALS
- WIDEST VARIETY OF MEXICAN BEERS & TEQUILAS IN TOWN
- MEETING/PARTY FACILITIES AVAILABLE
- PATIO SEATING AVAILABLE
- OVER 100 VARIETIES OF TEQUILA



2918 N. Service Drive • (Hwy 61)  
Red Wing, MN • 651-385-8939



## History Happens Here... Visit the GOODHUE COUNTY HISTORY CENTER

1166 Oak Street  
Red Wing, MN  
(651) 388-6024  
[www.goodhuehistory.mus.mn.us](http://www.goodhuehistory.mus.mn.us)

### HOURS

Tues.-Fri. 10am-5pm;  
Sat. & Sun. 1-5pm  
Closed Mondays & Holidays



We have been sending picture Christmas cards just under 300.

since 1948. When our four children grew up and left home we had to think of other subjects for our cards. We have been members since just after the charter of the Society in 1977, our number is

As you can see by the picture, I was an avid, rabid shopper! I think all the wing crocks that Red Wing made are here except for the 60 gallon.

# Trio of 35-gallon crocks celebrates Society's milestone

By Ruth Nerhaugen  
Contributor

**W**hen you're talking crocks, big is special. Big and unique is even better.

So when Commemoratives Manager Bob Morawski decided the Red Wing Collectors Society's 35th Convention deserved something special – "Thirty-five years is a milestone," he pointed out – he went to Maple City Pottery in Monmouth, Ill., with an idea to add to the celebration.

Traditionally, Red Wing Potteries made 30- and 40-gallon crocks, but Morawski wanted a size to match the year. He ordered three 35-gallon crocks.

"They've been a challenge from the beginning," he acknowledged. But Bob Downs, Maple City Pottery owner, was willing to try. "He's been great to work with," Morawski said.

"It's all new to us," Downs said.

He made the first big crock with a simple Bristol glaze as a Kids View project.

That bisque-fired crock was brought to the MidWinter Get Together in Des Moines, where about 15 young Kids View



participants from all over decorated it. They added their handprints and initials to the crock, and are decorated with the date and acknowledgement of the 35th Convention in red, black and blue lettering, then fired again.

It will be auctioned at the Member's Only Thursday night auction.

The second 35-gallon crock, which is similar, will be signed by members attending the Convention. It'll be set up near the registration area at Red Wing High School, Morawski said. People will be invited to autograph the zinc-glazed crock, then it will be sprayed to seal the new decorations.

The Society probably will keep that one for permanent display.

Salt-glazing the third crock was the biggest challenge, both men said.

Downs explained that it was important to keep the salt vapor out of the crock's interior, so he figured out a technique that involved glazing the inside first, before loading it in the kiln for the salt firing.

He had to redo the front of the kiln – making the door bigger so he could get it

in.

As wet clay, it weighed about 200 pounds. Four people were needed just to pick it up. Fired, it weighs a bit under 200 pounds and, Downs said, it actually is a 36 3/4-gallon crock.

It's either the biggest he's ever made "or pretty darn close," he said. "It's a feat," he said, factoring in the size, thickness, and uneven heat for firing.

The salt-glaze crock also will be auctioned at Convention, annual business meeting Friday, Morawski said. Proceeds from selling the two big crocks will go to the Society.

In addition to the 35-gallon crocks, Maple City also is providing 35 2-gallon crocks.

The business [www.maplecitypottery.com](http://www.maplecitypottery.com) was founded 1987. Artisans hand-craft all of the stoneware produced there. The pottery has a diverse line of products, and also accepts orders for specialty items and custom pieces like those ordered by the collectos society.



**BUY 1  
SHIRT  
2ND SHIRT  
50% OFF\***  
\*EQUAL OR LESSER VALUE



**JOSEPHSON'S**  
ESTABLISHED 1878

215 Bush Street, Red Wing, MN  
651-388-4261

Store Hours: Mon.-Sat. 9-5, Thurs. 'til 9 PM



*Stop & relax at the new lounge*

**1/2 PRICE  
FLIGHT OF BEER**

With menu purchase. Limit 1 per person.  
14 different taps to choose from

**FREE Homemade Potato Chips**  
with drink purchase



Located in the Historic Armory Center  
Downtown Red Wing, MN  
Open Tuesday-Sunday

## Welcome Collectors!

- *Breakfast served all day*
- *55 plus special*  
(not valid with other discounts)
- *Summer salads*
- *Delicious dinners*
- *Rich & Real Cream Pies*
- *Fantastic Fruit Pies*
- *Scrumptious Cookies*
- *Mammoth Muffins*



812 Withers Harbor Drive • Red Wing • 385-0783  
[www.perkinsredwing.com](http://www.perkinsredwing.com)

# Chapter Contact Information

## CANNON VALLEY CHAPTER

Dale Erickson,  
President  
1712 Harrison Ct  
Northfield, MN 55057-3004  
507-645-6771



Debra Gullickson, Secretary  
30173 Lakeview Ave  
Red Wing MN 55066  
651-267-4352  
Email - dbg@q.com

## GOLDEN STATE CHAPTER

Bruce Cameron, President  
PO Box 690  
French Camp, CA 95231  
510-537-0325  
Email - www.goldenstateredwing.com



## GOPHER CHAPTER

John Sagat, President  
7241 Emerson Avenue S.  
Richfield, MN 55423-3067  
(612) 861-0066  
Email - thezagats@comcast.net



Michelle Mueller, Membership Chair  
3319 Edinbrook Court  
Brooklyn Park, MN 55443  
763-493-2638  
Email - rwprincess@gmail.com

## ILLINOIS CHAPTER

Open position

## INDIANA WINGERS CHAPTER

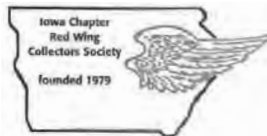
Ron Keim, President  
58398 Country Road 27  
Goshen, IN.46538  
Phone: 574-536-4116  
Email - ronkeim@yahoo.com



Cleo Dimmit, Vice President  
9658 N.1175 W  
Monticello, IN 47950  
Phone: 574-965-2938  
Email - cdd9658@comcast.net

## IOWA CHAPTER

Wayne Burk,  
President  
304 Allamakee St  
Waukon, IA  
52172  
563-568-4387  
Email - whburk@salamander.com



Lowell L Reed, Vice President  
2808 Vine St  
West Des Moines, IA 50265-3241  
515-225-3024  
Email - creedinwdm@aol.com

## LEWIS & CLARK CHAPTER

Sheldon Bohnhoff,  
President  
6781 Highway 22 S.  
New England, ND 58647-9767  
701-579-4522  
Email - sheldon@ndsUPER-net.com



Sheila Schumacher,  
Secretary  
26900 Chowen Avenue  
Elko, Minnesota 55020  
952-242-4203  
Email - rjsj@mchsi.com

## NEBRASKA CHAPTER

Steve Splitterger, President  
7843 Red Oak Rd.  
Lincoln, NE 68516  
402-770-7600  
Email - rsplitterger@hotmail.com

## PUGET SOUND CHAPTER

Wally Armstrong, President  
24129 Old Owen Rd  
Monroe, WA 98272-7681  
360-794-7172  
Email - armst101@aol.com

## ROCKY MOUNTAIN CHAPTER

Matt Beilby,  
President  
Rocky Mountain Chapter RWCS  
PO Box 7737  
Loveland CO 80537  
970-669-9190  
Email - beilby.matt@gmail.com



## SIouxLAND REDWINGERS

Jon Hawley,  
President  
515 W 16th St  
Sioux Falls, SD  
57104-4803  
605-321-2147  
Email - nomadicnotions@yahoo.com  
siouxland.redwingcollectors.org  
Siouxland Chapter Website



Glenn Beall, Vice President  
215 W. 7th St.  
Logan, IA 51546-1221  
712-644-2256  
Email - gbeall@iowatelecom.net

## SOUTHWEST REDWINGERS

Kent Williamson -  
President  
3104 East Broadway  
Rd Lot 328  
Mesa, AZ 85205  
Email - rwscockent@juno.com  
sw.redwingcollectors.org  
Southwest Chapter Website



## SUNSHINE STATE REDWINGERS

John Dougherty, President  
1792 Walden Pond Dr  
Ft. Pierce, FL 34945  
772-466-7737

Don Peterson, Vice President  
2902 Limpkin Lane  
Kissimmee, FL 34746  
(218) 721-3888  
Email - djpeterson@netscape.com

Anne Ashauer, Treasurer  
604 Ohio Blvd  
Eustis, FL 32726  
352-483-0790  
Email - anneashauer@embarqmail.com

## TRAILS WEST CHAPTER

Larry Birks,  
President  
26400 S. Hickory  
Trail  
Harrisonville, MO  
64701  
816-380-1096  
Email - brgr3@embarqmail.com  
trailswest.redwingcollectors.org  
Trails West Chapter Website



Jerry Mounts, Vice President  
104 W. 128th St.  
Kansas City, MO 64145-1207  
816-510-2248  
Email - jerry@pressuremounts.com

## WISCONSIN CHAPTER

Pete Pavloski, President  
1411 Rapids Trail  
Nekoosa, WI 54457  
715-325-3715  
Email -  
pbpav@hotmail.com



## WOLVERINE CHAPTER

Ken Bahlman, President  
44829 Malow Ave.  
Sterling Heights, MI 48317  
586-731-4628



Bob Tassie, Vice President  
605 N 9th Street  
St Clair, MI 48079  
810-329-3293

Charlotte Ackerman, Secretary  
1256 East Chippewa River Road  
Midland, MI 48640  
989-832-2527  
Email - chardave@charter.net

## RED WING COLLECTORS SOCIETY INC. COMMEMORATIVE INFORMATION

<b>1977</b>	Salt Glaze Crock	250	<b>1999</b>	5 Gal. Kover Weight	7,444
<b>1978</b>	Common Jug	350	<b>2000</b>	Hamm's Pitcher	7,190
<b>1979</b>	Butter Churn	400	<b>2001</b>	Sponge Bowl	6,901
<b>1980</b>	Sponge ware Bowl	400	<b>2002</b>	5 gal. Ball Lock Packing Jar	6,888
<b>1981</b>	Brown-top Jug	750	<b>2003</b>	Leaping Pegasus figurine planter	6,089
<b>1982</b>	Cherry band Mug	697	<b>2004</b>	Brushware Vase	5,790
<b>1983</b>	Stone Mason Fruit Jar	1,026	<b>2005</b>	Red Wing Self Draining Jar	5,323
<b>1984</b>	Salt-glazed Cooler	1,161	<b>2006</b>	Round-Up Teapot	5,191
<b>1985</b>	Ice Water Cooler	1,750	<b>2007</b>	5 gal. Birch Leaf Threshing Jug	4,500
<b>1986</b>	Acid Proof Measure	1,982	<b>2008</b>	Century of Progress Transportation Mug	3,700
<b>1987</b>	Red Wing Ashtray	2,328	<b>2009</b>	Red Wing Advertising Bean Pot	3,606
<b>1988</b>	Pompeii Plate	2,600	<b>2010</b>	Pigs	3,421
<b>1989</b>	Gray Line Pitcher	2,682			
<b>1990</b>	Fancy Jug	3,540			
<b>1991</b>	Pantry Jar	3,551			
<b>1992</b>	North Star Jug	4,260			
<b>1993</b>	Chicken Fountain	4,819			
<b>1994</b>	20-lb Crock	5,660			
<b>1995</b>	Giraffe Planter	6,186			
<b>1996</b>	Cookie Jar	7,175			
<b>1997</b>	20# Salt Glaze Crock	7,508			
<b>1998</b>	Blue Iris Pitcher	7,564			



# RWCS Board of Directors

## President

### Dan Depasquale

2717 Driftwood Dr  
Niagara Falls, NY 14304-4584  
Home: 716-216-4194  
Email: president@redwingcollectors.org

## Vice President

### Ann Tucker

7241 Somononauk  
Sycamore, IL 60178  
Home: 815-751-5056  
Email: vicepresident@redwingcollectors.org

## Secretary

### John Saget

7241 Emerson Ave So.  
Richfield, MN 55423-3067  
Home: 612-861-0066  
Email: secretary@redwingcollectors.org

## Treasurer

### Mark Collins

4724 N 112th Circle  
Omaha NE 68164-2119  
Home: 402-684-8437  
Email: treasurer@redwingcollectors.org

## Historian

### Steve Brown

2102 Hunters Ridge Court  
Manitowoc, WI 54220  
Home: 763-684-2400  
Phone: (715) 220-3550  
Email: historian@redwingcollectors.org

## Auction Manager

### Todd Avery

29361 Flower Valley Rd  
Red Wing, MN 55066-7520  
Phone: (651) 592-3008  
Email: auction@redwingcollectors.org

## Education Manager

### Glenn E. Beall

215 W. 7th St.  
Logan, IA 51546-1221  
Phone: (712) 644-2256  
Email: education@redwingcollectors.org

## Commemorative Manager

### Bob Morawski

2130 S Ridgeway Dr.  
New Berlin WI 53146  
262-853-8269  
Email: commemorative@redwingcollectors.org

## Representative At Large

### Russa Robinson

1970 Bowman Rd  
Stockton CA 95206-9654  
Home: (209) 931-1066  
Email: repatlargewest@redwingcollectors.org

## Jerry Erdmann

W15416 Fair-Morr Rd.  
Tigerton WI 54486  
Home: 715-535-2094  
Email: redatlargeeast@redwingcollectors.org

## Convention Support Personnel

## Pre-Registration

### Jim & Karen Key

1617 Alvina St  
Red Wing MN 55066  
Ph: 651-388-5806  
Email: keyster@redwing.net

### Jim & Joyce Sutherland

410 Harding St  
Red Wing, MN 55066  
Ph: 651-388-5806  
Email: jjsuther1@presenter.com

## Display

### Julie & Glenn Beall

215 W 7TH ST  
Logan IA 51546-1221  
Home: (712) 644-2256  
Email: display@redwingcollectors.org

## Show & Sale

### Pete & Cindy May

645 Pates Ave  
Greenville, TN 37743-4220  
Home: 423-639-2477  
Email: rw3pcmay@embarqmail.com

## Newsletter Editor

### Rick Natynski

N44 W25922 Lindsay Road  
Pewaukee, WI 53077  
Home: 414-416-9464  
Email: newsletter@redwingcollectors.org



**This crock is one of the 35, 2 gallon crocks made for the Annual Convention celebration.**

WELCOME COLLECTORS

## More Collectables!



### Show off your love of Red Wing Pottery

**1,000's of charms available**

Custom charms made with your state's chapter name

Past Red Wing pottery charms available

## LIFE'S LITTLE OASIS

213 Bush Street • Red Wing  
651-388-5171

M-W 10-6; Thur.-Sat. 10-7; Sun. 12-4  
Locally owned and operated

## LIBERTY'S

RESTAURANT & LOUNGE



Decor of Red Wing Yesteryear

## Welcome Collectors!

Open Daily 8 a.m.  
Serving Breakfast,  
Lunch & Dinner  
Since 1975

Featuring Sandwiches,  
Pizza, Steaks, Seafood,  
Mexican, Italian and  
American Cuisine.

Online Menu  
www.libertysonline.com

## 388-8877

"Free shuttle service to and from local motels"

303 W. Third Street  
Downtown Red Wing

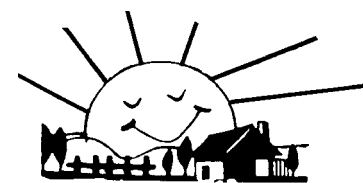


## GREAT CHICKEN

Dinners & Buckets



- BURGERS & FRIES
- SANDWICHES
- WRAPS
- SALAD BAR
- CONES
- SHAKES
- SUNDAES



## BREAKFAST SPECIAL

### \$4.29

2 eggs, 2 bacon strips and  
2 pancakes

**A Proud Sponsor of the Potter's Convention**

# Randy's

Hwy. 61, Downtown Red Wing



# Anniversary celebration begins

In celebration of the Red Wing Collectors Society's 35th anniversary, charter members will be recognized at the annual business meeting on Friday, July 8, at Red Wing High School.

Just over 200 people became Charter Members when the Society

formally organized and the first Convention was held in July 1977 in Red Wing.

About 40 of those individuals still are members, according to RWCS Executive Director Stacy Wegner. Any who are at the business meeting, plus other longtime members, will be cited.

The summer gathering kicks off a year of celebration

that will conclude at the 2012 Convention, Wegner noted, explaining, "Thirty-five years is a strategic milestone for any club."

In addition to recognizing members, the society also is putting together a slide show including images of the city of Red Wing and how it, too, has changed.



## Across



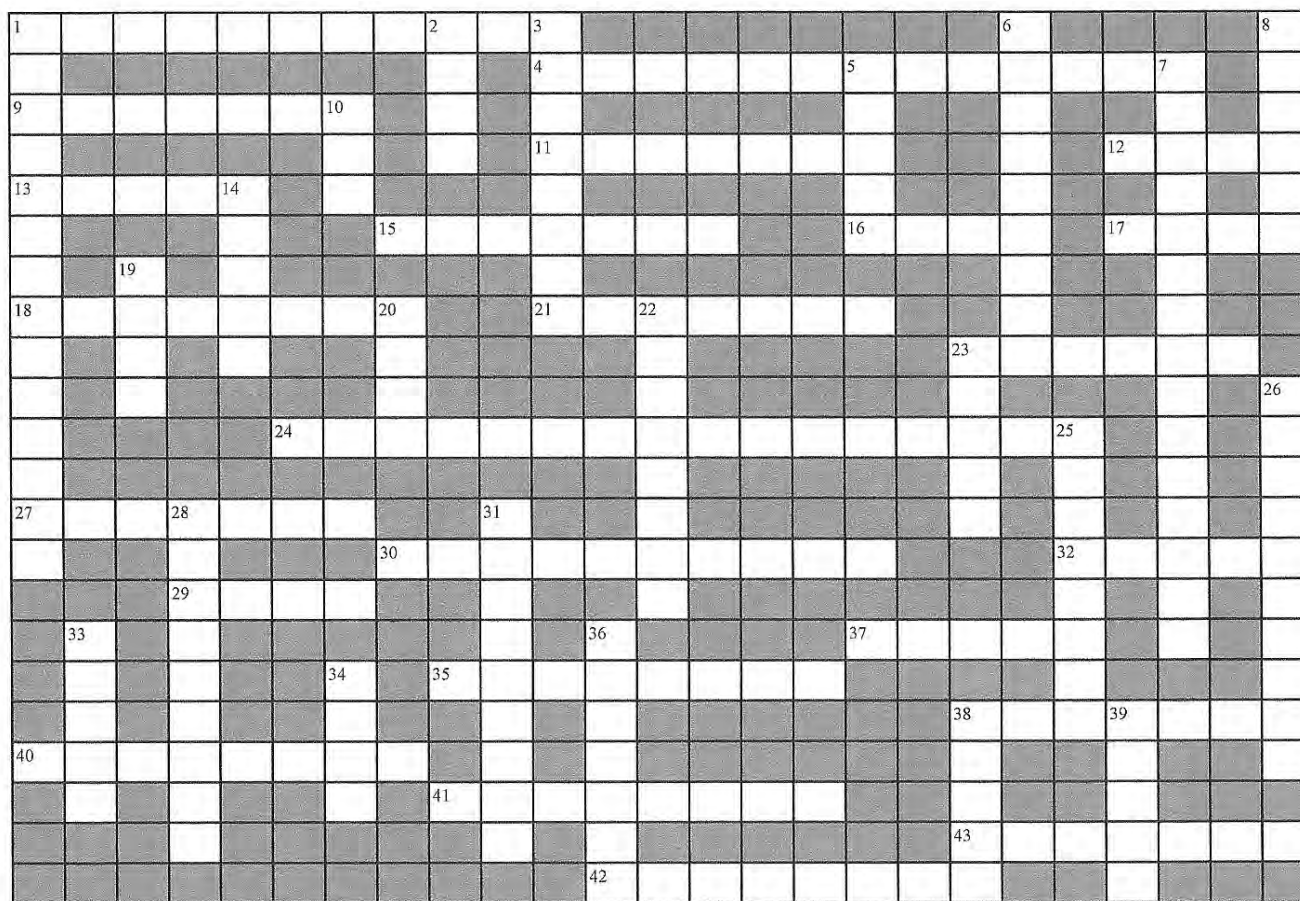
- 1 The RWCS is celebrating its' \_\_\_\_\_ year.
- 4 On what street is Pottery Place located?
- 9 Red Wing High School is the home of the \_\_\_\_\_.
- 11 Last president of the Red Wing potteries, Richard \_\_\_\_\_.
- 12 Cartoon skunk & also a Red Wing dinnerware pattern.
- 13 RWCS members convention bar of choice.
- 15 What website hosts the Red Wing Society Channel?
- 16 Kiln drippings are called turkey droppings or turkey \_\_\_\_\_.
- 17 Former Red Wing Mayor now a state senator. John \_\_\_\_\_.
- 18 What did John Paul discover in 1861?
- 21 Glaze resembling 'the weatherbeaten face of Hiawatha's grandmother'.
- 23 Wisconsin is the \_\_\_\_\_ state.
- 24 Built in 1953, the potteries 75th year. \_\_\_\_\_.
- 27 1932-37 Potteries produced art pottery for George \_\_\_\_\_.
- 29 In 1920, Sundberg Brothers store was at 201 \_\_\_\_\_ Street.
- 30 Do not confuse this item with a soup tureen.
- 32 To give as merited.
- 35 Proprietor of 'Larry's Jugs', Larry \_\_\_\_\_.
- 37 Red Wing Union stoneware used 11 different \_\_\_\_\_.
- 38 RW Lamp Division legal name: Red Wing Potteries of \_\_\_\_\_.
- 40 Art deco pottery grouping depicting nudes.
- 41 Where can you become a fan or friend of the RWCS?
- 42 At convention it's sunny, bring plenty of \_\_\_\_\_.
- 43 A dinnerware line, also a type of grape.

## Down



- 1 Famous dinnerware pattern designed by Eva Ziedal.
- 2 How many wives did George Rumrill have?
- 3 RWCS Auctioneer Dick \_\_\_\_\_ talks faster than most people think.
- 5 Red Wing made \_\_\_\_\_ variations of a Christmas tree stand.
- 6 Pottery place was the home of the \_\_\_\_\_ Stoneware Company.
- 7 What building houses the RWCS?
- 8 At convention, getting info on your collection is a \_\_\_\_\_.
- 10 How many newsletters does a member receive in a year?
- 14 Internet phone service to call the RWCS office free.
- 19 Originally there were 450 steps built on \_\_\_\_\_ bluff.
- 20 Added \_\_\_\_\_ to kiln creating an orange-peellike texture.
- 22 RWCS includes this child/teen program. \_\_\_\_\_.
- 23 RWCS membership dues will not leave you \_\_\_\_\_.
- 25 2011 commemorative chair, Bob \_\_\_\_\_.
- 26 RWCS members are also members of the RW \_\_\_\_\_.

## RED WING Collectors Crossword Puzzle 2011



Answers on Red Wing Collectors Society website: [www.RedWingCollectors.org](http://www.RedWingCollectors.org)

redwingr.com 2011

- 28 The RWCS Twitter Account is \_\_\_\_\_.
- 31 What graphic did Western Stoneware use on some pieces?
- 33 Dinnerware patterns sold by grocery chains. Bob \_\_\_\_\_.
- 34 Northstar jugs are identified by their \_\_\_\_\_ shaped tops.
- 36 RWCS is always looking for new \_\_\_\_\_.
- 38 A koverwate was placed in a \_\_\_\_\_.
- 39 A loose break in a piece of pottery.





# What will commemorative be?

By Ruth Nerhaugen  
Contributor

**B**ob Morawski knows that the unveiling of the commemorative is the most highly-anticipated event of the Red Wing Collectors Society Annual Convention.

As commemorative manager, he has no trouble keeping it a secret until 8 a.m. Thursday, July 7, when distribution begins at Red Wing High School.

This year, he is anticipating the moment, too.

"I personally feel the piece is going to be very well received by the membership," said the New Berlin, Wis., collector.

Again this year, there will be three versions of the piece, which is a miniature of something that was produced by Red Wing Potteries. About 3,400 are being made.

Ninety percent of them will be Version A; 9 percent will be Version B; and 35 will be a truly unique Version C.

"You won't know which you will get until

you open the box" either at the convention or when it arrives in the mail, for people who get theirs shipped, Morawski said.

He inaugurated the three-version commemorative when he became commemorative manager three years ago.

Morawski also has added a special version for Kids View. About a dozen of these pieces will be auctioned – some during convention, some at MidWinter – to raise money for the children's program.

He also initiated having a theme in the commemorative distribution room, just to

add to the fun. This year, there will be a dairy theme.

"The commemorative is a mini version of a Red Wing piece from back in the day," Morawski said. "This year we will also have some actual size pieces to auction off." The full size pieces also will be available in A, B and C versions.

"I'm just trying to mix things up," he explained, and give people at the convention something a little new and different to enjoy.

# Collecting is fun for any age

By Wendy Callicoa  
Contributor

**I**t is once again that special time of year in Red Wing when the entire town is invaded by thousands of devoted Red Wing Collectors both young and old. The city of Red Wing and the Annual Red Wing Collectors Society Convention provides a wonderful opportunity for the family to vacation together.

For many years, the RWCS has had the challenge of encouraging the next generation to maintain their interest in the wares of Red Wing and the Red Wing Collectors Society. Eleven years ago Sue Jones Tagliapietra and I developed Kids View of Red Wing at the RWCS convention to attract a new younger generation of collectors to the Red Wing Collectors Society. This program has developed into an exceptional part of the RWCS. We have seen many kids come to our seminars during summer convention and enjoy the activities of Kids View only to age out when they turn 15, and lose interest. In years past many of the graduates began to volunteer to assist during Kids View activities. The problem continues to be what can we do to retain their interest in collecting as they become teenagers and young adults. The time has come to explore opportunities for education and retention of the young adult collector. Do you know a young collector between the ages of 15-20 years old that might be interested in the history of clay industry in Red Wing and the wares that were produced there. It's time to bring them to the RWCS Convention July 7th and 8th at Red Wing High School.

In celebration of the RWCS 35th Anniversary, a new program has been developed for young adult collectors 15-20 years old and will make its debut during

our Annual Convention. This program will be the next step for young collectors to continue learning about Red Wing and its wares. The young collectors will develop new friendships through peer to peer discussion groups and hands on activities. Young collectors are encouraged to attend sessions Thursday 10:00 am till 12:00pm and Friday 10:00am till 12:00pm at the Red Wing High School. The Young Collectors will make a field trip to the Pottery Place Street Sale in downtown Red Wing to discover many of the different products produced by the Red Wing Potteries. Friday the Young Collectors will work with RWCS Foundation member Carmen Selfridge to



**3, 35 gallon crocks made by Maple City Pottery for the RWCS milestone. It has been more than 70 years, since a crock of this size has been produced. The top one will be available for signing and the other two will be auctioned during the Convention.**

create mosaic designs using real Red Wing Dinnerware and Stoneware pieces. Young Collectors who participate in the first years seminars will become a Charter member of the RWCS Young Collectors Club and

receive a special stoneware piece to commemorate the beginning of this adventure.

For more information about this new program check us out on the web at [www.redwingcollectors.org](http://www.redwingcollectors.org).

## NEW: YOUNG COLLECTORS PROGRAM

### Thursday, July 7th

Time	Activity
10:00	<b>Young Collectors Meet and Greet</b> Meet up with your old friends and find out who is new!
10:15 to 11:45	<b>Pottery Place Road Trip</b> <b>Students - Bring Your Spending Money!</b> <ul style="list-style-type: none"> <li>Students will visit with booth vendors and learn about different pieces of Red Wing including: pricing, condition and availability.</li> <li>You will have the opportunity to shop and purchase a piece to add to their collection from the "special booth"</li> <li>Students will be encouraged to volunteer at Kids View Seminars and in other Convention areas!</li> </ul>

### Friday, July 8

Time	Activity
10:00 to 12:00	<b>Education - Back corner of Cafeteria</b> <ul style="list-style-type: none"> <li>Using the Internet to learn more about Red Wing!</li> <li>Bring your Computer and experience online resources and EBAY.</li> <li>Red Wing Dinnerware - starting a collection</li> <li>Red Wing 101 - city and pottery fun facts</li> </ul> <b>Making Mosaics - Home Economics Rm K102</b> Carmen Selfridge, RWCS Foundation Board Member, will help students to make their own mosaic with pieces of Red Wing - Come Join the Fun!

# Charter members recall 35 years with the Society

By Ruth Nerhaugen  
Contributor

**H**er father's long history with the Red Wing pottery industry prompted Helen Bell to join. Vi Malmquist became a member because she very much enjoyed her time working in the potteries office. Delores Callstrom's interest in joining stemmed from the fact that she already was a collector.

The three charter members, who all live in Red Wing now, had their own reasons for becoming active in the organization 35 years ago, but they share a mutual enjoyment in being part of the Red Wing Collectors Society.

Helen Bell recalls how it came about.

"There was a little notice in the newspaper," she said. The Republican Eagle story invited people who were interested in talking about their Red Wing pottery to come to a supper in the Victorian dining room at the St. James Hotel.

After thinking about it, she realized, "Dad would have been so proud to be a part of that," Bell said. She signed up.

"Before the dinner was over, the society

was born," Bell recalls. She suspects that organizers Dave Newkirk and Lyndon Veil had it "in the back of their minds" to form the organization.

The society officially was formed and the first convention was held - a one-day event - in July 1977 at the Goodhue County History Center.

Bell, who became member No. 109, has remained active, although her participation in recent years has been limited to a single appearance due to health concerns. She currently lives at St. Brigid's at Hi-Park.

Other than one summer convention she missed in the early 1980s because of a family visit, she has been a familiar face over the years - especially her years working at the information desk and serving as a greeter. Bell also is responsible for establishing this special section of the Republican Eagle, which she edited for the first several years.

Bell has been a banquet and keynote speaker and also led education seminars on what it was like growing up the daughter of a potter.

Her father, Daniel Bell, was a laborer in charge of checking and correcting any problems with the rail cars that carried green

ware through the big kilns. He removed any less than perfect pieces and fixed any problems he saw.

"He was always so anxious," Bell said, because if problems occurred when the stoneware was in the kiln, it would take at least two weeks for it to cool down sufficiently so that workers could go in and remove the pieces. Most commonly, the green ware would tip and dam the process.

For Bell, the most enjoyable part of convention always was "meeting the people and being part of the organization." She explained, "If you really want to be part of an organization, you have to be active, and help it grow."

Charter member Vi Malmquist, who also lives now at St. Brigid's, joined the collectors society because of her wonderful memories as an office worker at the potteries. She got the job after finishing school.

"I loved working there," she said. "It was a very nice job. It was a lot of fun."



Helen Bell

Malmquist said she had never collected things before starting work at the potteries, but quickly became one.

"I liked everything," she said, and she still has a collection, although many of her Red Wing has been passed on to her two children.

"It's still pretty, I know it," she said.

Delores Callstrom was living in Cannon Falls at the time but came to Red Wing to shop and visit. She joined the new society as it was being formed, partly because she and her husband already had a selection of Red Wing. A cousin who worked at the potteries was able to get her dishes at a very reasonable price, she said.

Her personal favorite was pottery decorated with watermelons (Tampico Dinnerware).

A Red Wing resident now, Callstrom has maintained her membership and still enjoys convention - and her Red Wing pottery - although she's not able to be as active as she once was.

"The business meeting was one of the big nights," she recalled from the early years. "It was always interesting."



**WE SET OUT TO  
MAKE WORK BOOTS.  
WE ENDED UP  
BUILDING A COUNTRY.**

Since 1905, we've been handcrafting the shoes that have built skyscrapers, roads, bridges, railroads, and homes. In short, we've helped build America. We all have. Red Wing, the shoe company. And Red Wing, the community. Our strength lies in the people who live here. Play here. And work here. The proof is in every brand we make.



BUILDING GREAT BOOTS FOR OVER 100 YEARS



Red Wing Shoe Company 314 Main Street Red Wing, Minnesota 55066

*"Continuing the Tradition"*

**"Welcome Red Wing Collectors"**



**"2011 Collectible and 2011 Christmas Ornament Unveiling"**

Come to see our 2011 unveiling at 11:00am and enjoy a brat and soda at our annual "brat feed" Thursday, July 7, 11am to 3pm

**RED WING STONEWARE CO.**

4909 Moundview Drive  
651.388.4610

Highway 61 North  
800.352.4877

Visit our Website [www.redwingstoneware.com](http://www.redwingstoneware.com)

*"Production Viewing Windows in Factory Store"*

**Factory Store Open Daily**

**Factory Tours Weekdays 10:30am, 1pm & 3:30pm • Group & Bus Tours Welcome**

**Retail Salesroom • Personalized Stoneware • Factory Seconds**

# Foundation buying Pottery Annex for new museum

By Ruth Nerhaugen  
Contributor

**A** new, larger home is in the works for the Red Wing Pottery Museum.

The Red Wing Collectors Society Foundation is in the process of purchasing the Pottery Place Annex, just across the parking lot from the museum's current home on Old West Main Street.

Purchase of the huge building — 26,000 square feet — is being pursued jointly with the Red Wing Area Seniors. Each organization will own half the building; the central entry area will be jointly owned.

Details of the purchase are being worked out by attorneys, according to Diane Hallstrom, foundation board member. It could be a couple of months before the transfer is completed.

Both of the new owners may rent out some of the space. An Italian restaurant in the seniors' portion of the building is expected to remain, and the foundation also may be looking for some revenue from surplus space "until we can grow into it," Hallstrom said.

"The museum's mission is to educate and preserve all of the history and the products that Red Wing made," she noted. Ideally, it will provide answers to common questions such as "Who made it? What was it used for?" and more.

"We want our new museum to be interactive and very kid-friendly," she added. "We want it to be a fun place for a family to come, and also make it for people who want to do serious research. Mostly, we want to make it fun to learn about and research the clay industry."

As a Goodhue County Historical Society volunteers working with school programs, Hallstrom said she and her husband, Dave, learned "Kids in grade school today have no idea what it was like to live in your family with no electricity, and to have fun."

The Foundation has been trying for years to find a permanent location for the museum, which is in leased space on the second floor of the Pottery Place Mall.

Officials worked for a year toward the purchase of a different space, also in the Pottery District, but it didn't work out, Hallstrom said.

Then last fall, the seniors approached the foundation to discuss a possible partnership in the annex building, which is vacant except for the restaurant.

"It's so perfect," Hallstrom said — in many ways. For one, it's possible to split it down the center and give each organization almost identical square footage. And by



**Diane Hallstrom**  
Foundation Board Member

forming a condo association, they can share the common entrance and form a joint board to take care of mutual concerns such as the roof, parking lot, electrical and plumbing.

Each half has spaces at the end with separate entries that can be leased without much trouble.

"None of the walls, other than the common space, are load bearing," Hallstrom said, so it will be possible to create large open spaces or keep some smaller rooms — whatever they want. A large space will be needed for the Louise and Jerry Schleich collection which is being donated.

"It's a totally blank canvas," she said. She added, however, that since the purchase will be a contract for deed, it's likely that no major changes will be made for the first year or two.

A former foundation board member, Dave Kuffel, is working with both groups to determine floor plans, layout and appropriate uses. He also has secured donations of furnishings and hardware, Hallstrom said.

The Foundation is funded strictly through donations, she said. "Our members have been unbelievable."

Past and current board members alone have pledged \$300,000 over three years toward the purchase, and some money already is in savings since the group's intention to relocate is not new. Some people have donated items that can be auctioned



**Huge murals depicting scenes of the clay industry in Red Wing decorate the upper walls in the entrance to the Pottery Place Annex building, which is being jointly purchased by the Red Wing Collectors Society Foundation and Red Wing Area Seniors. The entryway will be shared by the two groups, foundation spokeswoman Diane Hallstrom said.**

to raise money for the project.

"Our goal is to have a million-dollar endowment so we can keep the museum running and keep it free to all," Hallstrom said. She pointed out that all members of the Red Wing Collectors Society automatically are members of the museum. The foundation also is looking at creating a "friends" group.

The foundation currently has no paid employees; volunteers assist with the museum now. Hallstrom acknowledged that it might be necessary to have staff at the expanded museum.

Updates on the status of acquiring the property will be available at the convention.

"It's going to be so exciting," Hallstrom said. "Once all the paperwork gets done, then the fun begins."

## Membership Application Form

A Primary \$25 annual membership is afforded all the rights and privileges of the organization. An Associate \$10 annual membership is afforded all the rights and privileges of the organization except for the receipt of the newsletter. There **must be at least one Primary membership per household address** in order to have other members at that address having Associate member status. Each membership is afforded the right to purchase one Convention commemorative.

### Please indicate if your membership is:

- New Membership  
 Renewal

### Type of membership:

- Primary annual membership fee \$25  
 Associate annual membership fee \$10

Name \_\_\_\_\_

Address \_\_\_\_\_

City \_\_\_\_\_ State \_\_\_\_\_ Zip \_\_\_\_\_

E-mail Address \_\_\_\_\_

MEMBER and/or Chapter who interested you in joining: \_\_\_\_\_

Send Check, money order, or  
credit card info to:

Red Wing Collectors Society  
P.O. Box 50  
Red Wing, MN 55066-0050

Call 800-977-7927

E-mail: [director@redwingcollectors.org](mailto:director@redwingcollectors.org)



# CROCK HUNT



 Brickhouse Bar and Grill  
Picture # \_\_\_\_\_

 Goodhue County History Center  
Picture # \_\_\_\_\_

 Kwik Trip  
Picture # \_\_\_\_\_

 Liberty's Restaurant and Lounge  
Pick # \_\_\_\_\_

 Life's Little Oasis  
Picture # \_\_\_\_\_

 Marie's Underground Grill & Tap House  
Picture # \_\_\_\_\_

 Meatheads Meat & Deli  
Picture # \_\_\_\_\_

 Moments on Main  
Picture # \_\_\_\_\_

 Pete's Kitchen Corner/  
Bed & Bath Treasures  
Picture # \_\_\_\_\_

 Randys Restaurant  
Picture # \_\_\_\_\_

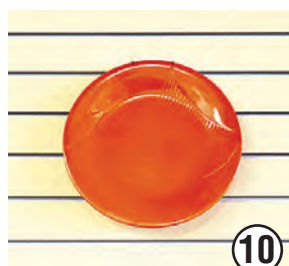
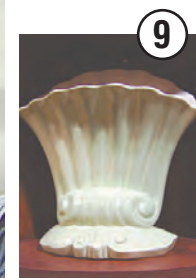
 Red Wing Arts Association  
Picture # \_\_\_\_\_

 Red Wing Trolley Company  
Picture # \_\_\_\_\_

 St. James Hotel  
Picture # \_\_\_\_\_

 The Subhouse  
Picture # \_\_\_\_\_

 Whimsy's Closet  
Picture # \_\_\_\_\_



**RULES: The Crock Hunt begins on Monday, July 4.** Both Red Wing Collectors Society Members and non-members are eligible to participate in the 2011 RWCS Convention Crock Hunt. Participants must locate each display pictured site during regular business hours to match the business logo and photo. Participants must obtain an employee initials (or other mark chosen by the site) from each site.

Winners drawn will have their forms checked to ensure that answers are correct before a prize is awarded. Winners do not need to be present to win. **Completed forms must be brought to the Courtyard Pavilion at Colvill Park by 6:00 p.m. on Friday, July 8 to be included for prize drawing(s).**

Participating businesses must feature at least one piece of old or new Red Wing pottery in their picture. The business logo will not be included in the picture. Both the photo and business logo will be printed at random on the Crock Hunt form published in the Convention Supplement and Attendee Packet.

Name: \_\_\_\_\_

Address: \_\_\_\_\_

Phone: \_\_\_\_\_

Email: \_\_\_\_\_

**Completed forms must be brought to the Courtyard Pavilion at Colvill Park by 6:00 p.m. on Friday, July 8 to be included for prize drawing(s). There will be prizes for completing only half of the page too.**